

SERIES 1

OBJET

by Chester's



SERIES 1

OBJET

OBJET

CHESTER'S™

3

Objet

12

Context

31

Craft

47

Series 1

58

Leather & Caning



The Tub Chair, teak, leather
and rattan pg. 56



Welcome to SERIES 1 of Objet, a new collection from Chester's, which marries the highest carpentry skills from Chennai with our fine upholstery in Bangalore.

Unified by the influence of nineteenth century European furniture, this collection is rooted in a Classical aesthetic, and brought to life by carpenters with decades of experience in hardwood carpentry.

Like all our furniture at Chester's, the Objet collection is made to be treasured and passed on from generation to generation. Made from reclaimed and seasoned hardwoods these are luxury pieces, defined by their relationship with time: the time the Objet carpenters spend honing their craft, the time that it takes for hardwoods to season and age, and the lifetimes this furniture will endure.

Each piece in SERIES 1 has been carefully selected so as to offer something for a range of tastes and settings, but are united by their fine craftsmanship. We do hope you enjoy our new collection as much as we have enjoyed the process of creating it.



Estate Armchair, aged mahogany and a
cane woven back and sides, pg. 50



The work, care,
and story shared
by each seat
in the Objet
collection, makes
every individual
piece a unique
treasure.

Previous page: Meander Armchair, aged
Burma teak, Chester's signature leather
upholstery, pg. 48

Lisbon Slipper Chair, aged
Burma teak, washed French
twill loose cover, pg. 52





OBJET

Bergère Armchair; aged Burma
teak, Chester's signature leather
upholstery, pg. 48

The allure of our Objet range owes much to the skill of our craftspeople. Their masterful handling of solid teak and mahogany permits both the construction of enduring hardwood frames and the refinement and variety of forms that ornament each piece. Inspired by Colonial furniture and its historic European forbears, the details of our carving often reflect the Classical influences, which shaped the fashions of late-eighteenth and early-nineteenth century French and British architecture and interior design.





OBJET

Seat and caning detailing of the
Bergère Armchair, pg. 48



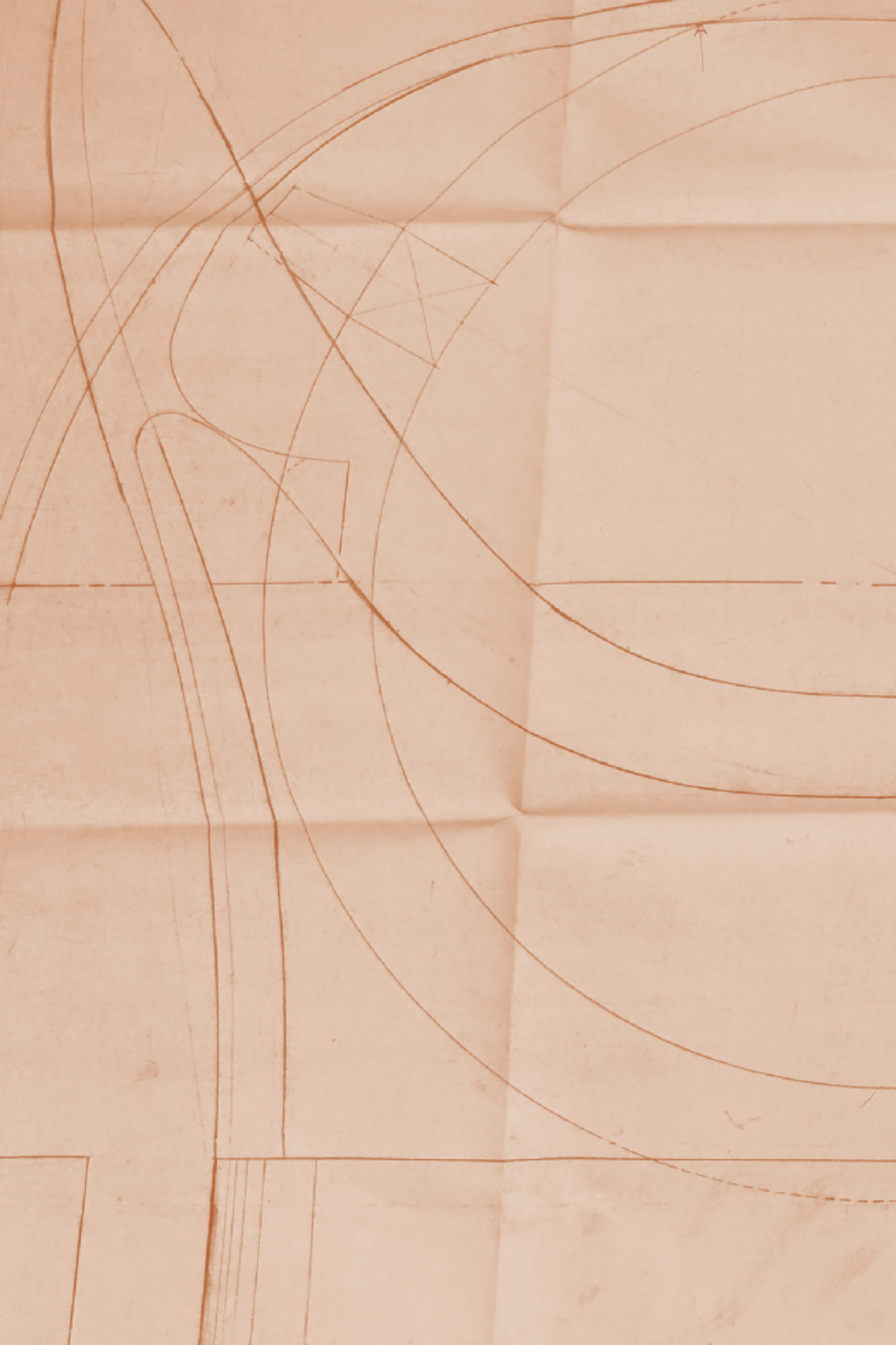
Crown Dining Armchair,
aged mahogany, pg. 54



At that time, rooted in a fascination with ancient Greek and Roman art and architecture, Classical forms inspired new fashions in furniture, creating elegant and restrained styles decorated with fine carving. In the Objet range, details reminiscent of Classical columns, such as the reeding along the arms, back and seat rails elongate the forms, drawing them together, and unifying the composition. Similarly, the scrolling arms and backs of some of our pieces and the details of their turned legs are suggestive of ancient architectural elements, and add graceful curves to each piece.

Scroll Dining Armchair,
aged mahogany, and detail of the
Scroll Dining Armchair,
aged mahogany; pg. 54





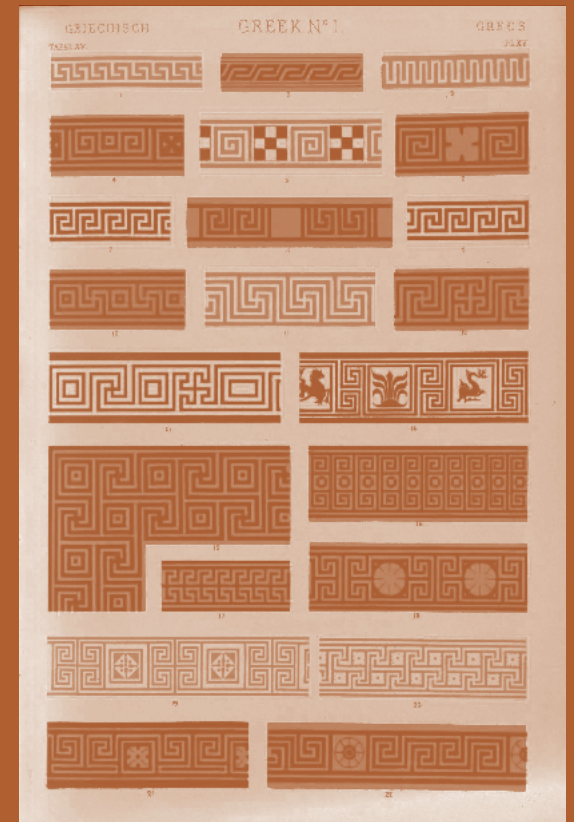
OBJET

Corner detailing on the
Meander Armchair, pg. 48



OBJET

Greek ornamentation in Owen Jones'
Grammar of Ornament, 1856





Originating from France during the early eighteenth century, Bergère chairs had become popular items of library furniture in Britain by the early nineteenth century. Their wide caned seats and backs, often with cushions, made them more comfortable than some of the more formal furniture of the period, and suitable for both study and sociable spaces.

Gilt Armchair from the drawing room, Southill.
c. 1796–9

Cane has a long history in Asia, where its use in furniture stretches back to ancient times. It was imported to Europe, where its use was popularised during the seventeenth century. While new techniques and applications have developed throughout the centuries, cane has retained its popularity and indeed been the subject of renewed interest in recent years. Its supple yet strong woven surface keeps sitters cool and its intricate patterns retain an honest elegance.

Bernoulli Armchair,
aged mahogany, pg. 50



OBJET

Guild Bench,
aged mahogany, pg. 56



Crescent Armchair, aged Burma teak,
heavy woven cotton upholstery, pg. 48



OBJET

Born in Chennai,
formed in Bangalore

The majority of pieces in our Objet collection are made from Burma teak reclaimed from old buildings from Chettinad. Seasoned for a minimum of ten years, these pieces are hand carved, cane woven and polished at our partner workshop in Chennai. Dressed by our master upholsterers in Bangalore, the woodwork of our Objet collection is complemented by cushioning either in our signature hand dyed leather or in fabric.



OBJET

Reclaimed Burma teak
from Chettinad.

A finely turned leg at our partner
workshop in Chennai



The Objet collection is slow furniture: crafted by master carpenters with skills honed over a lifetime. It is handmade and hand finished from materials that are seasoned over decades.



Master caner working with
Tamil Nadu grown bamboo





Our caned seats are made from dried bamboo canes from Karnataka and Tamil Nadu, hand woven into the wooden body of each piece. This weaving is a laborious skill that takes artisans many years to learn. A skilfully woven seat offers airflow, gentle give and strength. Like the wooden frame of an Objet piece, the caning develops a patina with age and can be sustainably restored when required.

OBJET

Bergère and Meander Armchair,
aged Burma teak, pg. 48



Spoonback Chair,
aged mahogany, pg. 52



An Objet piece sits comfortably in any space: it is not only a thing of use but also a marker of history and craft.

09.2022

SERIES 1

OBJET

1-14

1

BERGÈRE ARMCHAIR

A generous armchair influenced by classic French Bergère chairs from the nineteenth century, with low, hand carved, reeded urn legs and caned side paneling.

Aged Burma teak frame with a rattan side and back panels and a solid wood seat.

Available with loose seat and back cushions with dacron wrapped, high density foam for softness. Upholstered with self piped edging, in any of Chester's signature leathers or fabric of your choice.

L27" x D38" x H35.5"

3

MEANDER ARMCHAIR

An open frame armchair with reeding across the front of the seat, with Classical corner detailing and scrolled arms.

Aged mahogany frame with a rattan woven backrest and fixed seat.

Available with loose seat and back cushions, and optional lumbar cushion. Upholstered in any of Chester's signature leathers or a fabric of your choice.

L32" x D28" x H39"

2

BERGÈRE SOFA, 2 & 3 SEATER

Our extended Bergère sofa.

Aged Burma teak frame with a rattan side and back panels and a solid wood seat.

Available with loose seat and back cushions with dacron wrapped, high density foam for softness. Upholstered with self piped edging, in any of Chester's signature leathers or a fabric of your choice.

2 Seater: L57.5" x D38" x H35.5"

3 Seater: L83.5" x D38" x H35.5"

4

CRESCENT ARMCHAIR

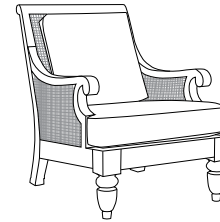
A contemporary take on the classic low recliner with smooth angles and more organic, fluid forms.

Aged mahogany frame with a fixed and upholstered backrest and seat.

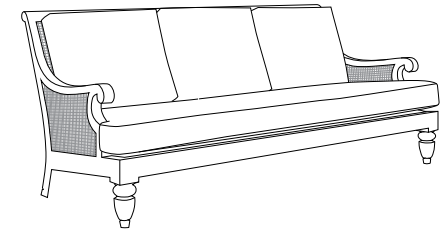
Available with loose seat and cushions, upholstered in any of Chester's signature leathers or a fabric of your choice.

L30" x D28" x H36.5"

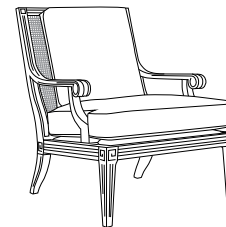
OBJET



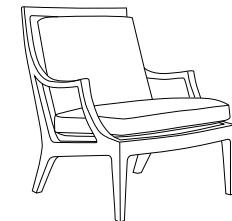
1



2



3



4

ESTATE ARMCHAIR

A generous mid-century armchair with turned wood legs and brass detailing. Extensive caning across the back rest and sides, along with its fixed cushion, makes the Estate Armchair a particularly comfortable seat for long periods.

Aged mahogany in an ebony finish with a rattan woven backrest, arm rests and a fixed seat.

Available with optional back cushions.
Upholstered in any of Chester's signature leathers or a fabric of your choice.

L25.5" x D34" x H32"

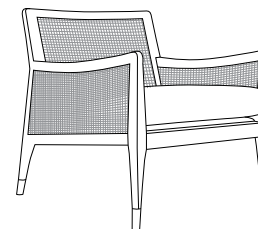
BERNOULLI ARMCHAIR

Our homage to one of the lesser known mid-century pieces from the city of Chandigarh's modernist furniture project. Our Bernoulli has a floating T-backrest and dynamic angular frame, whilst adding the comfort of a supportive fixed cushion.

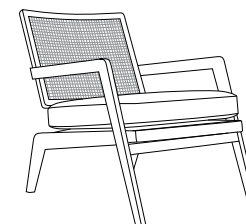
Aged mahogany with a rattan woven backrest and fixed seat.

Upholstered in any of Chester's signature leathers or a fabric of your choice.

L27.4" x D38" x H32"



5



6

LISBON SLIPPER CHAIR

A minimalist low occasional chair, with subtly detailed and turned legs below a perfectly fitted slipcover.

Aged mahogany frame fully covered with a sprung seat and back.

Available in a white French twill, or an upholstery fabric of your choice.

L23" x D26.5" x H32"

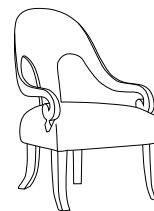
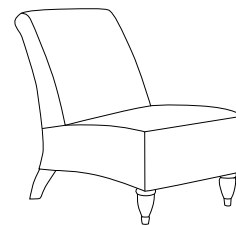
SPOONBACK CHAIR

Our classic spoonback; a form originally popular in Europe in the early-nineteenth century. Spoonbacks are characterised by their sweeping legs, scrolling arms and elegantly curved backrest, carved from a single piece of aged mahogany.

Aged mahogany with a soft upholstered seat.

Available upholstered in any of Chester's signature leathers or a fabric of your choice.

L23" x D20" x H36"



9

CROWN DINING CHAIR

A Regency-inspired dining chair with sweeping vertical curves and a gently enveloping crown-head back.

Aged mahogany in a natural finish.

Upholstered in any of Chester's signature leathers or a fabric of your choice.

L24" x D32" x H32.7"

11

SCROLL DINING CHAIR

An elegant dining or occasional chair featuring gentle upwards curves across the frame and caning.

Aged mahogany in a natural finish.

Upholstered in any of Chester's signature leathers or a fabric of your choice.

L17.5" x D26" x 38.25"

10

CROWN DINING ARMCHAIR

Our armchair variation of the Crown Dining Chair has scrolled arms and a slightly wider width. Like the Crown this makes a elegant carver or occasional chair.

Aged mahogany in a natural finish.

Upholstered in any of Chester's signature leathers or a fabric of your choice.

L24" x D32" x H32.7"

12

SCROLL DINING ARMCHAIR

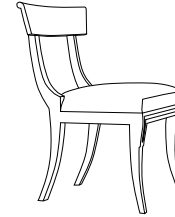
Our Scroll dining chair with the addition of scrolled arms that continue the elegant lines of the gently curved backrest.

Aged mahogany in a natural finish.

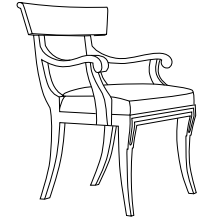
Upholstered in any of Chester's signature leathers or a fabric of your choice.

L23.5" x D27.5" x 38.25"

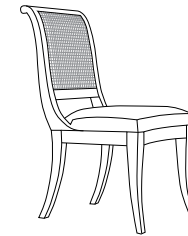
OBJET



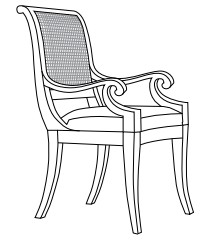
9



10



11



12

13

THE TUB CHAIR

The rattan finished Tub Chair is a new addition to the Chester's range, developed especially for the Objet collection.

With its graceful curved back in Teak and lined with hand-woven rattan and sweeping legs, the classic form is reminiscent of the French styles which influenced English Regency furniture.

L22.5" x D24" x H32"

14

GUILD BENCH

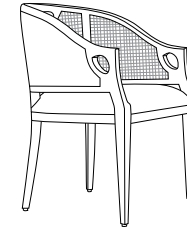
An elegant veranda piece, influenced by the forms of the arts and crafts movement of the late-nineteenth and early-twentieth century.

Aged Burma teak frame with a rattan cane woven seat.

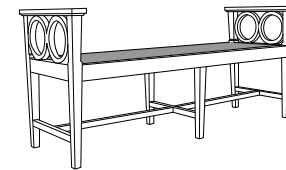
Available with a loose seat cushion and fabric of your choice.

L54" x D20" x H24.5"

OBJET

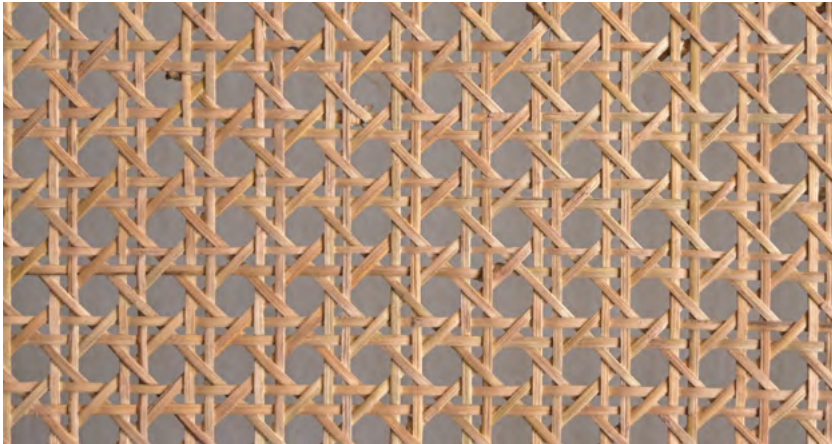


13

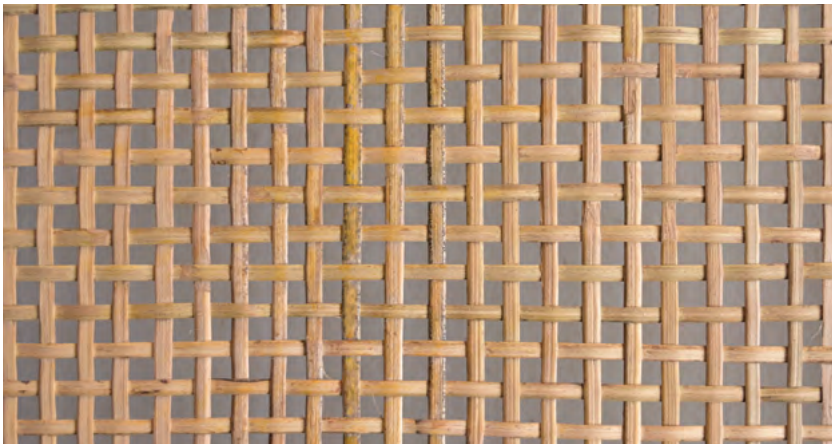


14

Finishing options
in the Objet line:



Eye-hole weave



Plain weave

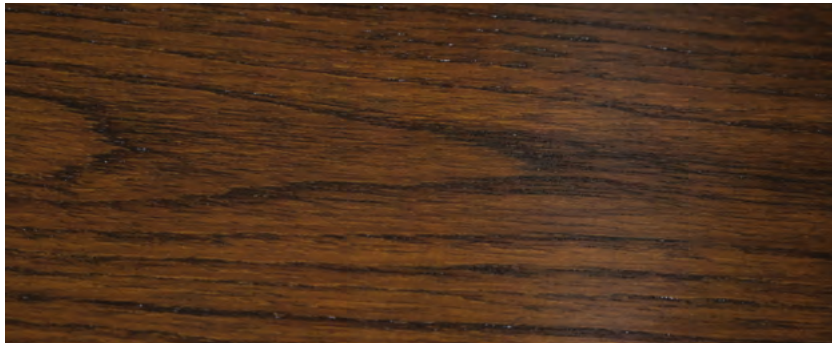
All the rattan in the Objet line is woven into the main frame of the pieces within our workshop in Chennai, ensuring the most durable and long-lasting structure possible.

We offer two rattan weave formations: Eye-hole weave, in which the caning is woven diagonally across the frame to create a repeating circular pattern, and Plain weave, in which the canes are woven to create a clear and more minimal vertical and horizontal formation.

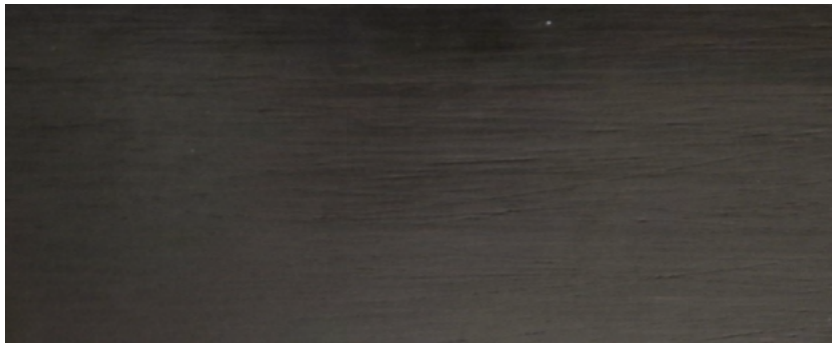
The high quality bamboo cane used in rattan weaving for furniture is sourced locally in Kanartaka and Tamil Nadu.



Burma teak in a Honey finish



Mahogany in a Natural finish



Mahogany in an Ebony finish

OBJET

The Objet line uses two types of hard wood. Both our teak and mahogany undergo three coats of polishing. This repetition of staining, sanding back and retaining creates a glass like finish which allows the pigment to be absorbed into the wood and reveals the wood's natural depth of colour.

Reclaimed
Burma Teak

We use only reclaimed Burma Teak from Chettinad in our Objet line.

This wood is seasoned over the decades it spends within architectural structures, and then whilst stored in our workshop, resulting in the optimum moisture point which ensures it is durable and will last for lifetimes without cracking or bending. The high grade Burma teak we use is also evident in its lack of knots, a trait which can also be seen in antique colonial furniture.

Objet pieces in Burma teak furniture are available in a light Honey stain.

Mahogany

First planted by colonialists, Mahogany is not native to India, but over decades of popular use has become a marker of high quality colonial and traditional Indian furniture. We source both salvaged and high quality mahogany for the Objet line.

Objet pieces in Mahogany are available in a Natural and Ebony stain.



Objet is a new collection from Chester's, makers of a carefully selected range of timeless furniture since 1994.

www.chestersindia.com | info@chesters.in

Sample Room:

16/A, 2nd Floor, KKMP Building, Thimmaiah Road
Vasanthnagar, Bangalore 560052, India

+91 9972444461

Works:

Plot No. 27b, 3rd Main, 1st Phase
KIADB, Peenya, Bangalore 560058, India

+91 80 4851 8010

Creative Direction: Ananth Ramaswamy

Catalogue Design: Nia Thandapani

 [chesters_india](https://www.instagram.com/chesters_india)



