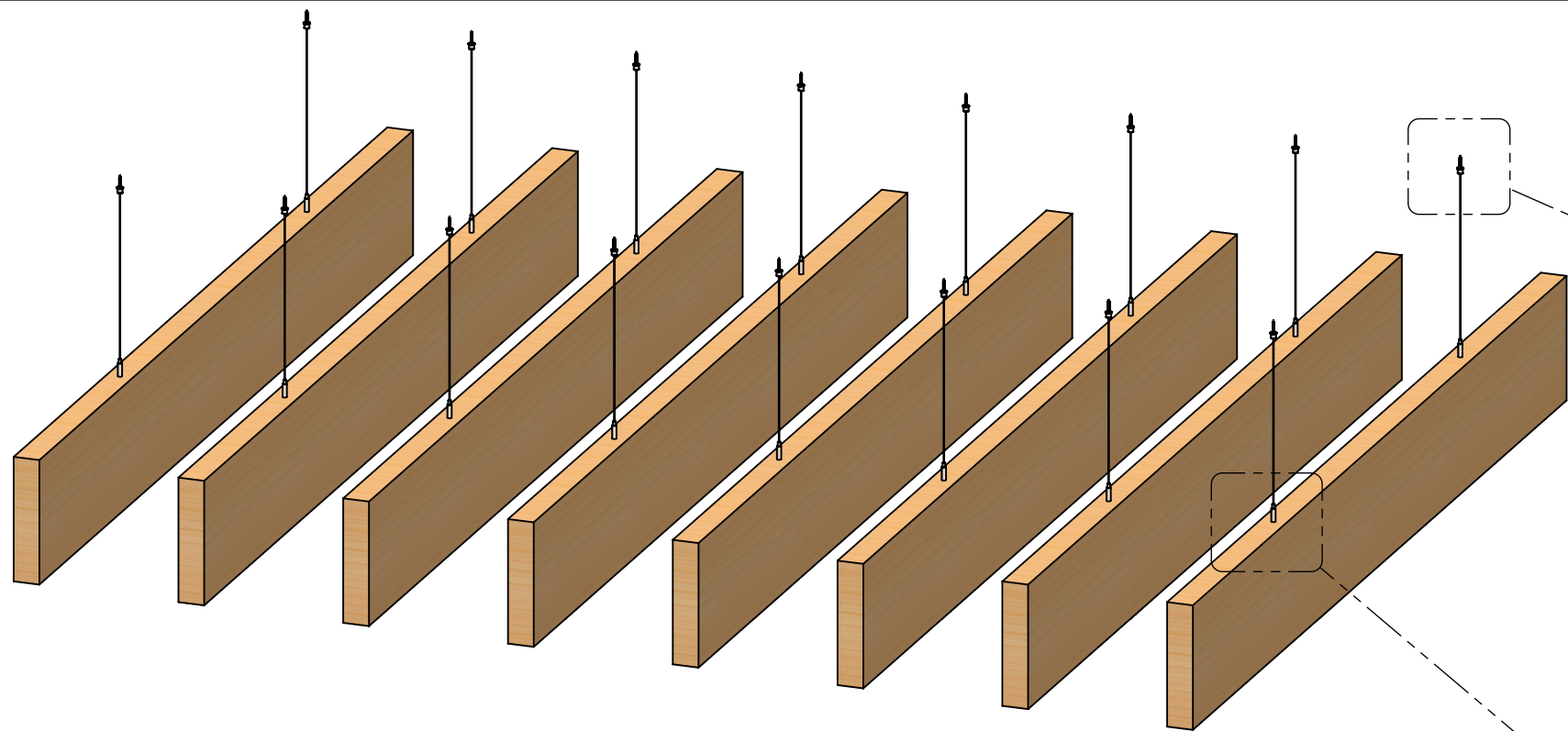


LODA ASSEMBLY - BOTTOM DIMETRIC

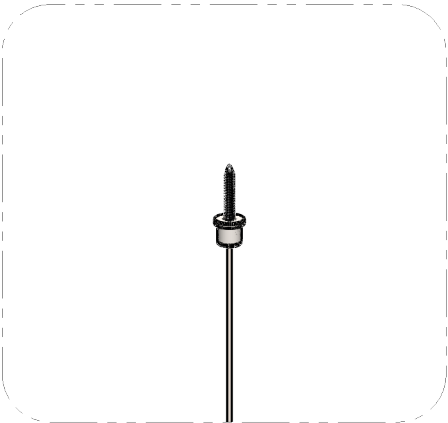
- STANDARD SIZES:
- 48", 72" & 96" LENGTHS
 - 6", 9", 12", & 20" HEIGHTS

DESCRIPTION: LODA BAFFLES - Wood Veneer Wrapped - 2½" x 12" x 96" - 16" on center - Griplock w/ Aircraft Cable - Attached to metal ceiling deck w/ ceiling mount (by others)		SONUS	
		TITLE: LODA - GRIPLOCK w/ CABLE	
REVISIONS:	PROPRIETARY AND CONFIDENTIAL	FILE NAME:	DATE:
REV 1 - 10/2/2023	THE INFORMATION CONTAINED IN THIS DRAWING IS THE SOLE PROPERTY OF SONUS NORTH AMERICA. ANY REPRODUCTION IN PART OR AS A WHOLE WITHOUT THE WRITTEN PERMISSION OF SONUS NORTH AMERICA IS PROHIBITED.	6.02-1-101	10/2/2023
SCALE 1:12	sonusna.com	JOB # 2-6.02	SHEET 1 OF 4



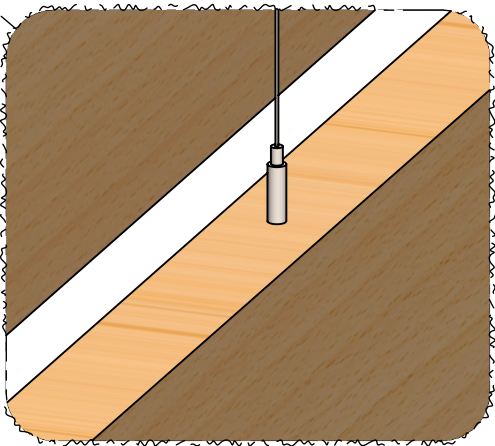
ITEM NO.	PART NAME	DESCRIPTION	QTY.
1	LODA Baffle	2½" x 12" x 96" Wood Veneer Wrapped	8
2	Hanger Bolt	1/4"-20 Double-Headed	16
3	Griplock	Side-Cable Exit Gripper	16
4	Aircraft Cable	Ø 1/16" Cable	16
5	Ceiling Mount	M10x1 Thread, male	16
6	Ceiling Mount	M10x1 Thread, female	16
7	Sheetmetal Screw	18-8 SS Phillips Flat Head Screws for Metal	16

LODA 8 x - ASSEMBLY



DETAIL B

• SCALE 1:4



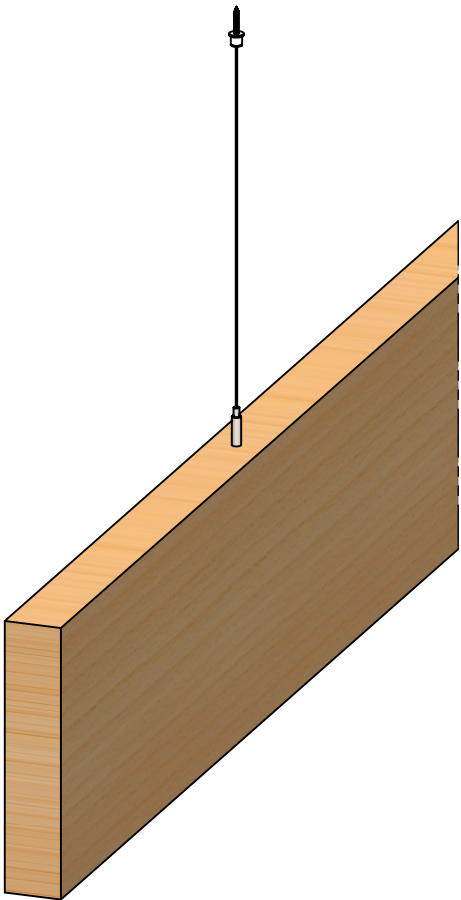
DETAIL A

• SCALE 1:4



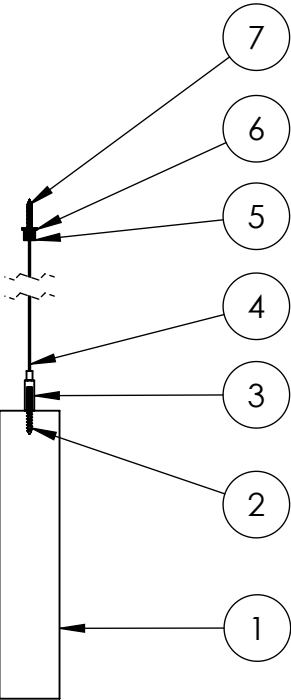
DETAIL B - EXPLODED

• SCALE 1:4

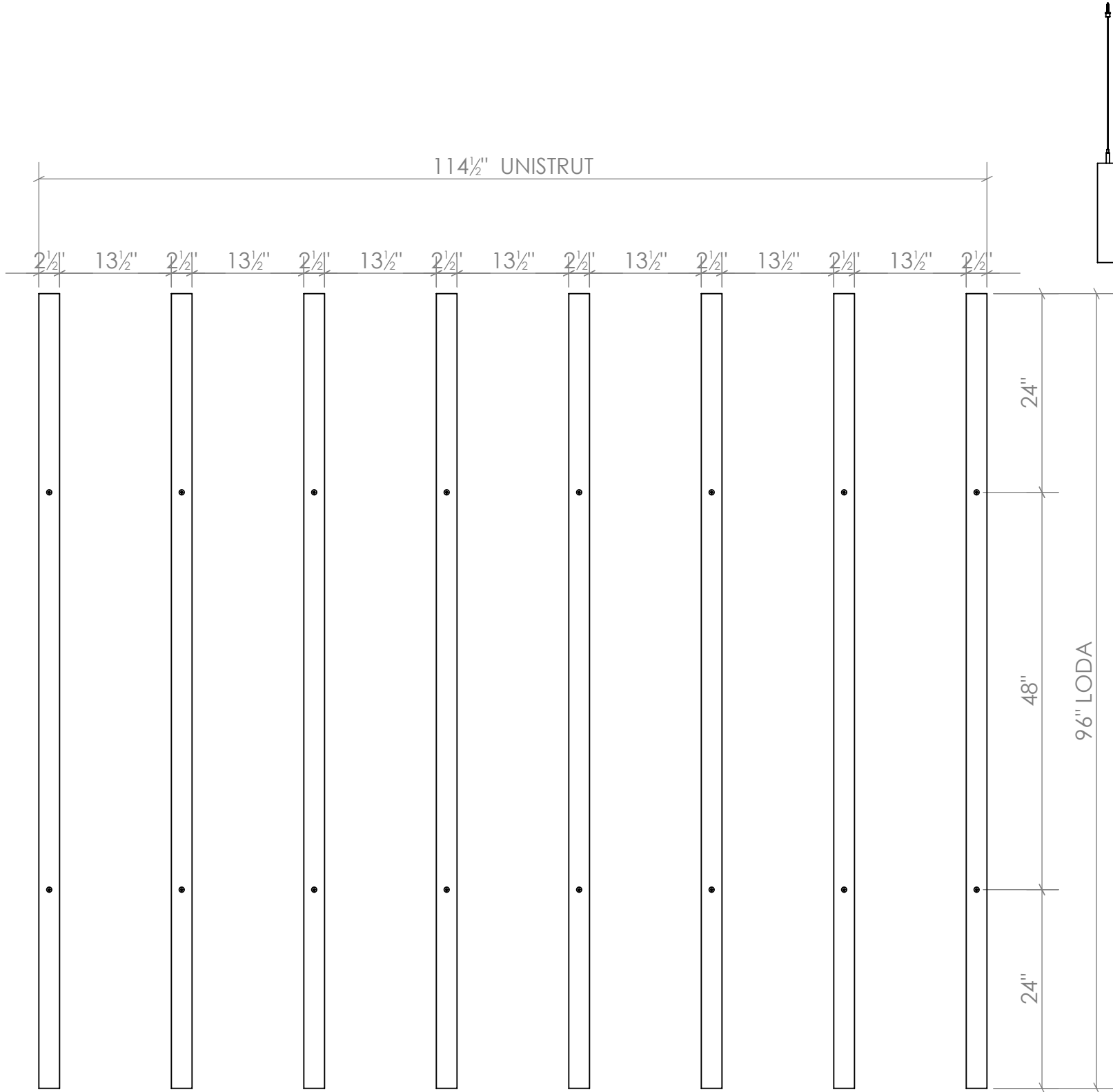


LODA UNISTRUT ATTACHMENT - ASSEMBLY

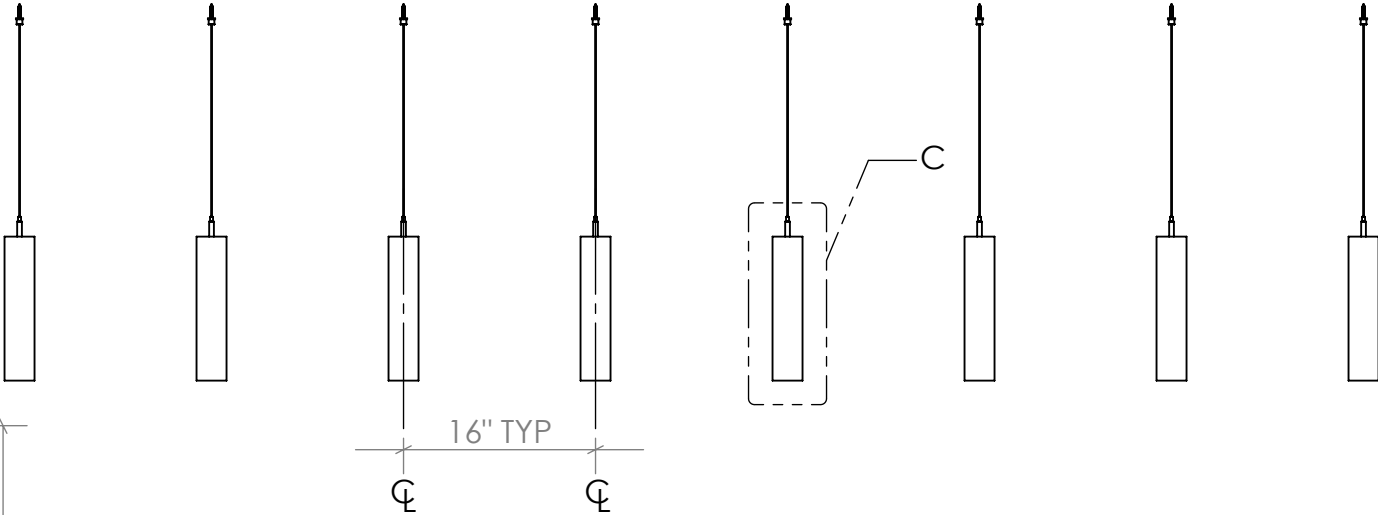
• SCALE 1:8



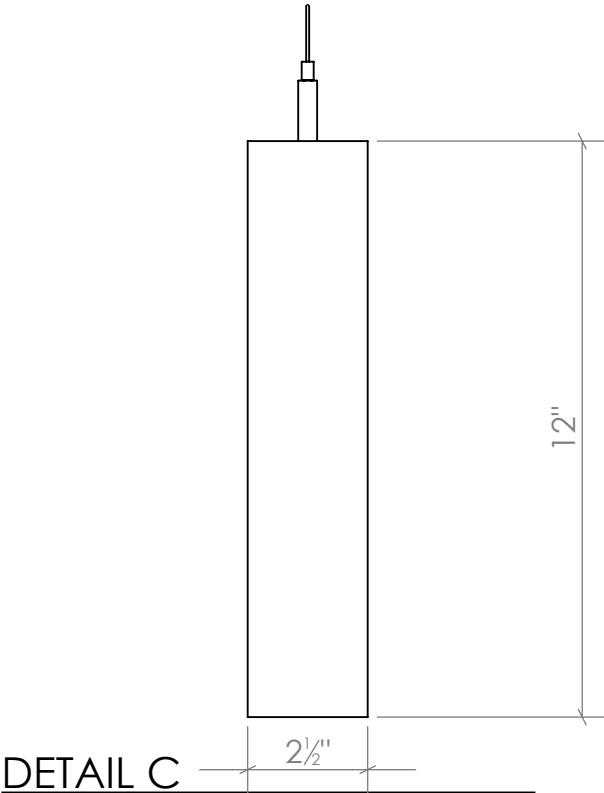
DESCRIPTION: LODA BAFFLES - Wood Veneer Wrapped - 2½" x 12" x 96" - 16" on center - Griplock w/ Aircraft Cable - Attached to metal ceiling deck w/ ceiling mount (by others)		SONUS	
REVISIONS:		TITLE:	
REV 1 - 10/2/2023		LODA - GRIPLOCK w/ CABLE	
PROPRIETARY AND CONFIDENTIAL		FILE NAME:	
THE INFORMATION CONTAINED IN THIS DRAWING IS THE SOLE PROPERTY OF SONUS NORTH AMERICA. ANY REPRODUCTION IN PART OR AS A WHOLE WITHOUT THE WRITTEN PERMISSION OF SONUS NORTH AMERICA IS PROHIBITED.		DATE:	
SCALE 1:16		6.02-1-101	
sonusna.com		10/2/2023	
JOB # 2-6.02		SHEET 2 OF 4	



LODA 8 x ASSEMBLY - PLAN

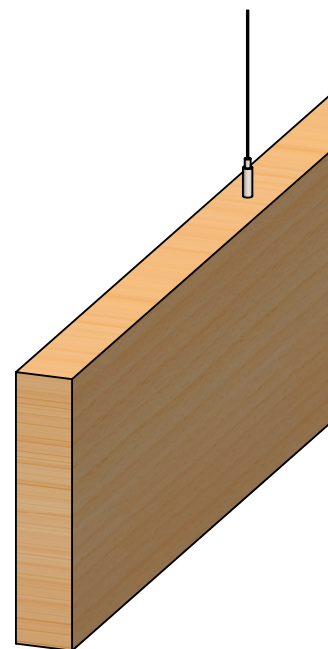
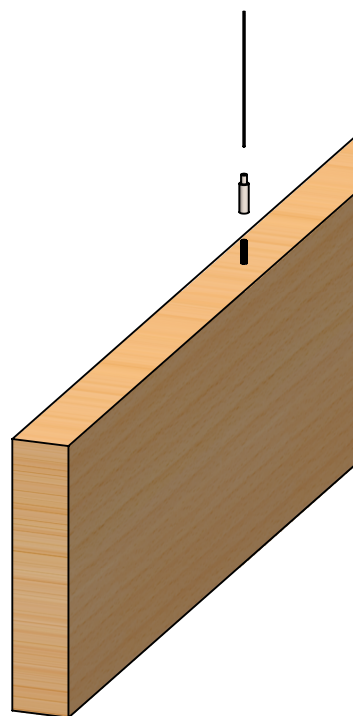
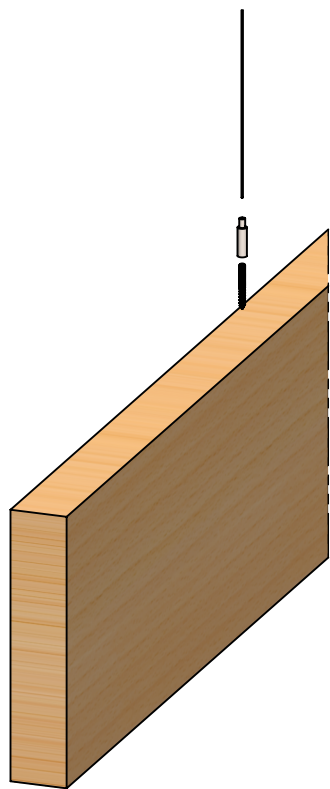


LODA 8 x ASSEMBLY - ELEVATION



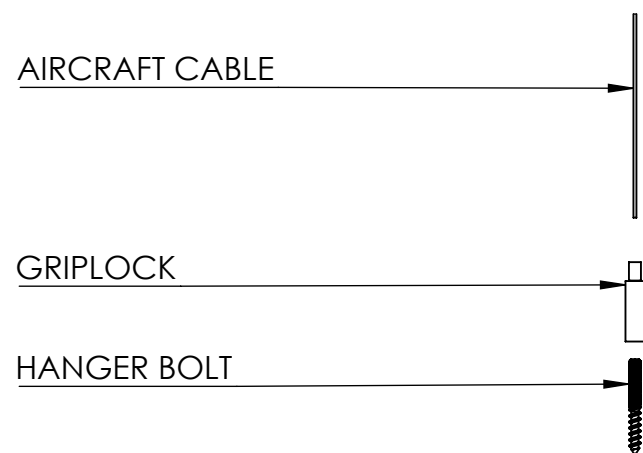
SCALE 1:4

DESCRIPTION: LODA BAFFLES - Wood Veneer Wrapped - 2 1/2" x 12" x 96" - 16" on center - Griplock w/ Aircraft Cable - Attached to metal ceiling deck w/ ceiling mount (by others)		SONUS	
REVISIONS:		TITLE: LODA - GRIPLOCK w/ CABLE	
REV 1 - 10/2/2023	PROPRIETARY AND CONFIDENTIAL	FILE NAME:	DATE:
	THE INFORMATION CONTAINED IN THIS DRAWING IS THE SOLE PROPERTY OF SONUS NORTH AMERICA. ANY REPRODUCTION IN PART OR AS A WHOLE WITHOUT THE WRITTEN PERMISSION OF SONUS NORTH AMERICA IS PROHIBITED.	6.02-1-101	9/5/2023
SCALE 1:16	sonusna.com	JOB # 2-6.02	SHEET 3 OF 4

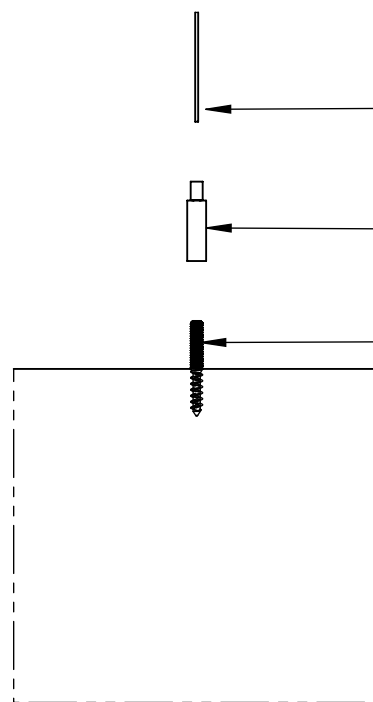


AIRCRAFT CABLE
THREADED THROUGH GRIPLOCK

LODA UNISTRUT ATTACHMENT - DIMETRIC



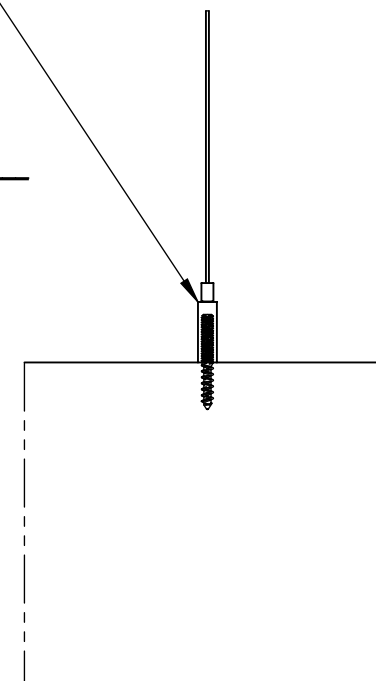
LODA



AIRCRAFT CABLE
IS ATTACHED METAL CEILING DECK

GRIPLOCK SCREWS ONTO HANGER BOLT

HANGER BOLT IS ATTACHED TO LODA



LODA UNISTRUT ATTACHMENT - ELEVATION

- SCALE - 1:4

DESCRIPTION: LODA BAFFLES - Wood Veneer Wrapped
- 2½" x 12" x 96"
- 16" on center
- Griplock w/ Aircraft Cable
- Attached to metal ceiling deck w/ ceiling mount (by others)

REVISIONS:

REV 1 - 10/2/2023

PROPRIETARY AND CONFIDENTIAL

THE INFORMATION CONTAINED IN THIS DRAWING IS THE SOLE PROPERTY OF SONUS NORTH AMERICA. ANY REPRODUCTION IN PART OR AS A WHOLE WITHOUT THE WRITTEN PERMISSION OF SONUS NORTH AMERICA IS PROHIBITED.

SCALE 1:8

sonusna.com

SONUS

TITLE:

LODA - GRIPLOCK
w/ CABLE

FILE NAME:

6.02-1-101

DATE:

9/5/2023

JOB # 2-6.02

SHEET 4 OF 4