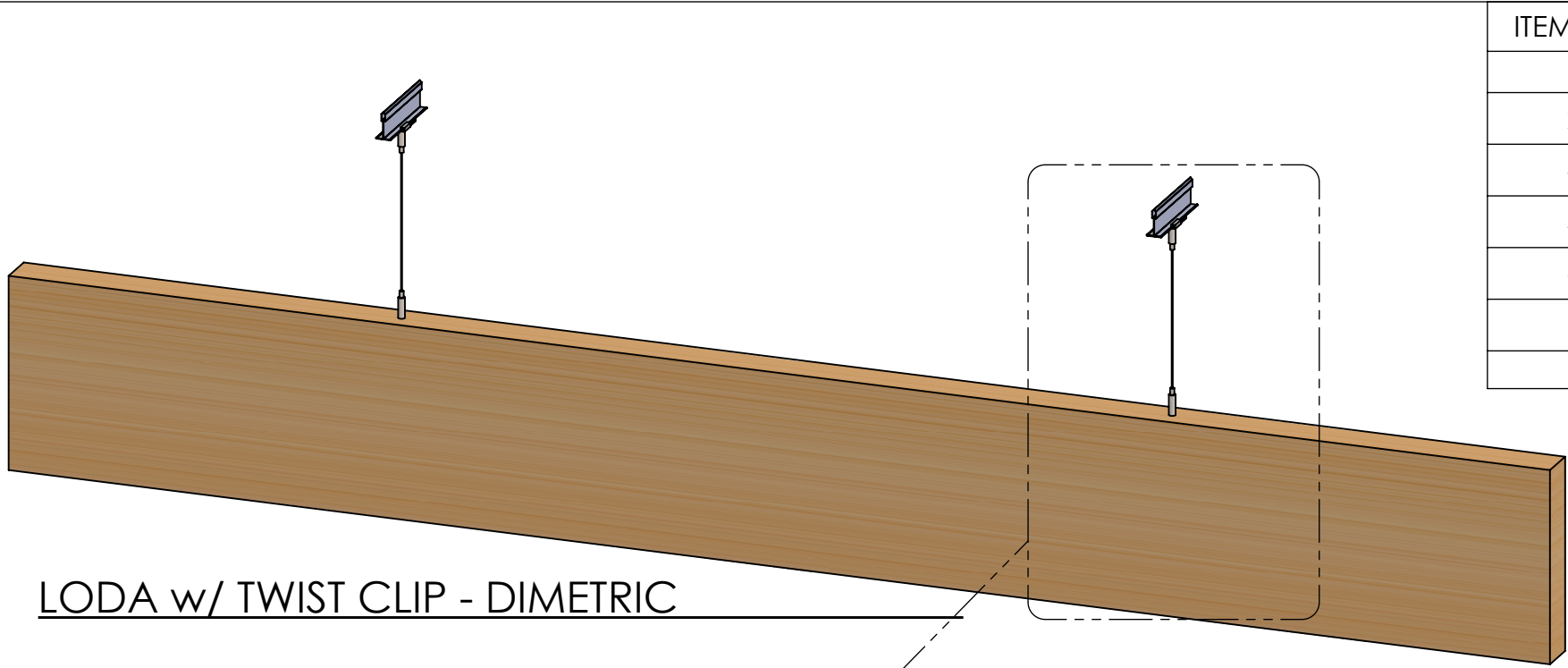
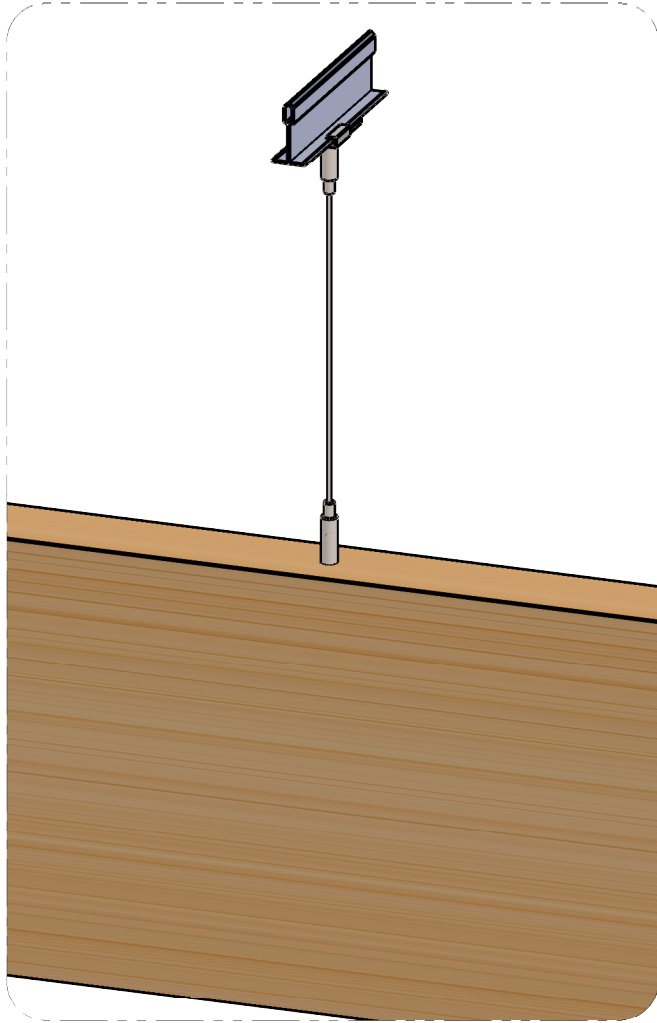


LODA w/ TWIST CLIP - BOTTOM DIMETRIC

<div>DESCRIPTION: LODA BAFFLES - Wood Veneer Wrapped</div> <div>- 2½" x 12" x 96"</div> <div>- 18" on center</div> <div>- Twistclip w/ Aircraft Cable</div> <div>- Attached to 15/16 T-Bar (by others)</div>		SONUS	
		TITLE: <div>LODA - TWIST CLIP SUSPENDED</div>	
REVISIONS:	PROPRIETARY AND CONFIDENTIAL		
REV 1 - 9/18/2023	THE INFORMATION CONTAINED IN THIS DRAWING IS THE SOLE PROPERTY OF SONUS NORTH AMERICA. ANY REPRODUCTION IN PART OR AS A WHOLE WITHOUT THE WRITTEN PERMISSION OF SONUS NORTH AMERICA IS PROHIBITED.		
REV 2 - 10/1/2023			
SCALE 1:10	SONUSNA.COM	FILE NAME: <div>6.035.01-1-001</div>	DATE: <div>10/1/2023</div>
		JOB # 2-6.03	SHEET 1 OF 4



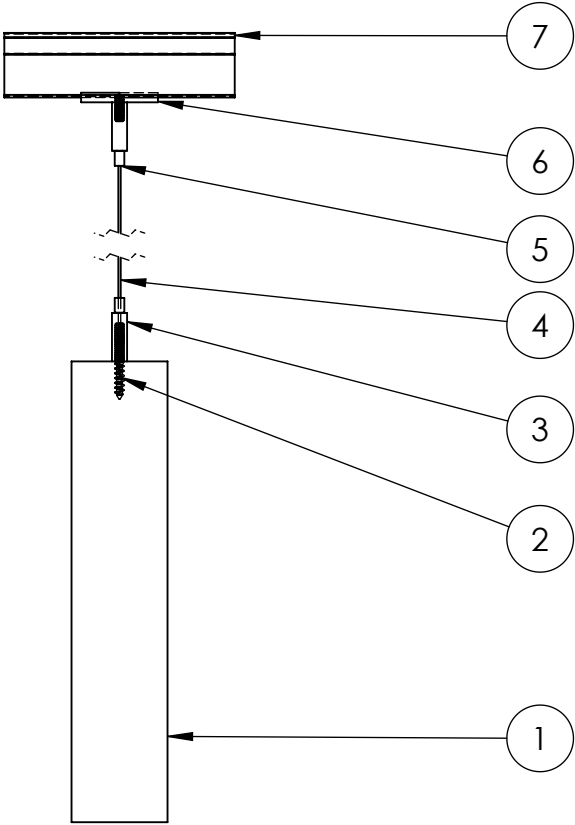
LODA w/ TWIST CLIP - DIMETRIC



LODA w/ TWIST CLIP - DETAIL

SCALE - 1:5

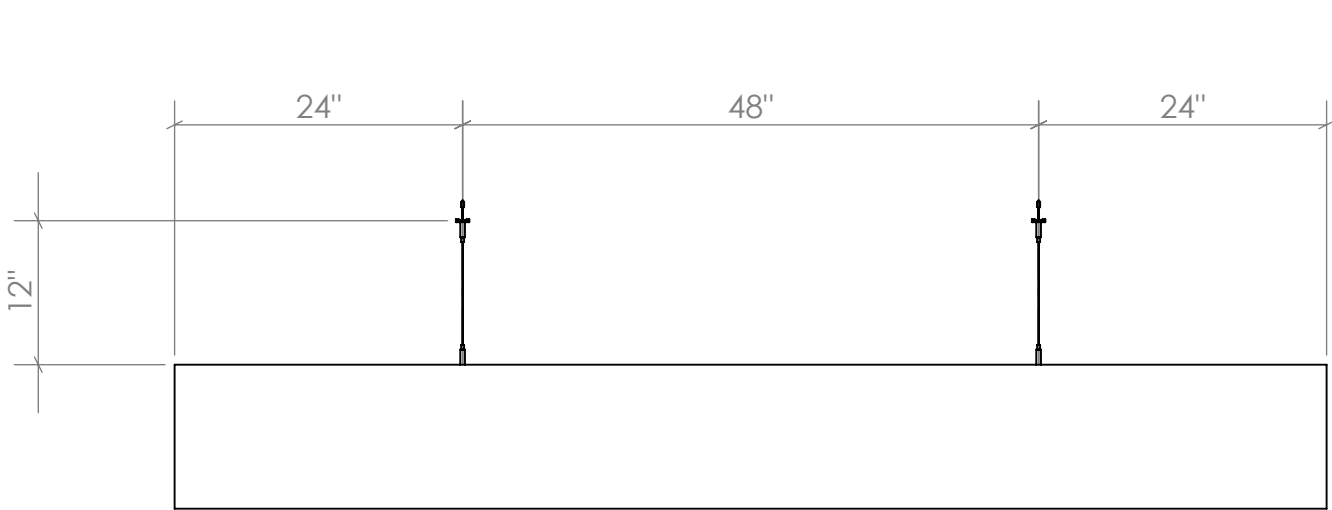
ITEM NO.	PART NUMBER	DESCRIPTION	QTY.
1	LODA Baffle	2½" x 12" x 96" Wood Veneer Wrapped	1
2	Nutsert	1/4"-20	2
3	Griplock	Side-Cable Exit Gripper, male	2
4	Aircraft Cable	Ø 1/16" Cable	2
5	Griplock	Side-Cable Exit Gripper, female	2
6	Twist Clip	1/4"-20 x 5/8" stud on clip	2
7	PRELUDE XL Main Beam	15/16" T-Bar	2



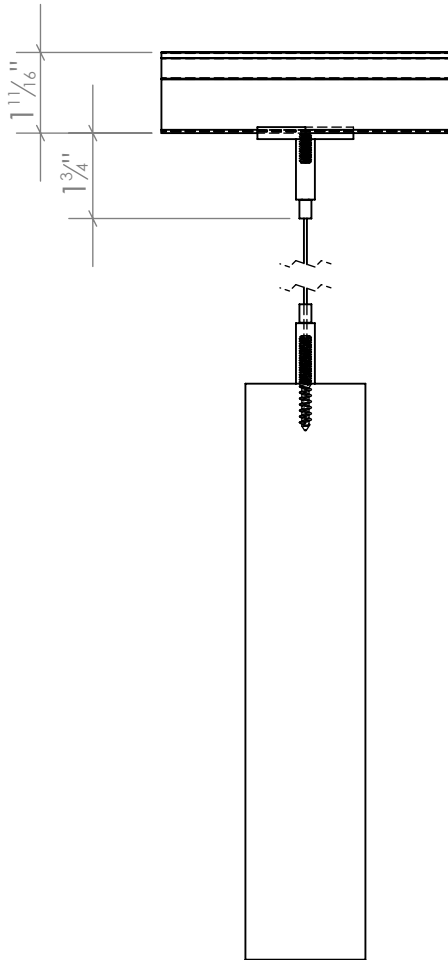
LODA w/ TWIST CLIP - END

SCALE - 1:5

DESCRIPTION: LODA BAFFLES - Wood Veneer Wrapped - 2½" x 12" x 96" - 18" on center - Twistclip w/ Aircraft Cable - Attached to 15/16 T-Bar (by others)		SONUS	
		TITLE: LODA - TWIST CLIP SUSPENDED	
REVISIONS:	PROPRIETARY AND CONFIDENTIAL	FILE NAME:	DATE:
REV 1 - 9/18/2023	THE INFORMATION CONTAINED IN THIS DRAWING IS THE SOLE PROPERTY OF SONUS NORTH AMERICA. ANY REPRODUCTION IN PART OR AS A WHOLE WITHOUT THE WRITTEN PERMISSION OF SONUS NORTH AMERICA IS PROHIBITED.	6.035.01-1-001	10/1/2023
REV 2 - 10/1/2023			
SCALE 1:10	SONUSNA.COM	JOB # 2-6.03	SHEET 2 OF 4

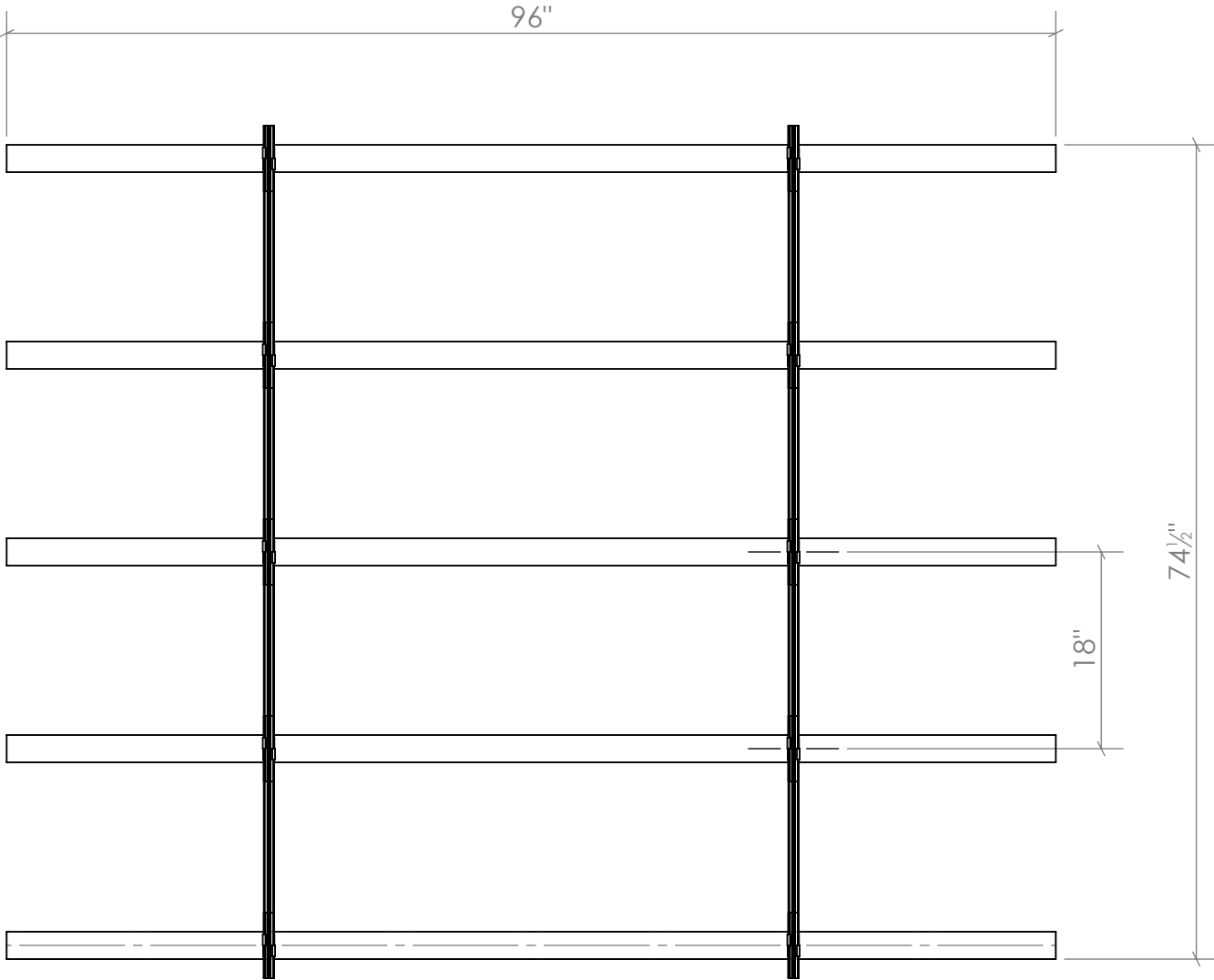


LODA w/ TWIST CLIP - ELEVATION



LODA w/ TWIST CLIP - END

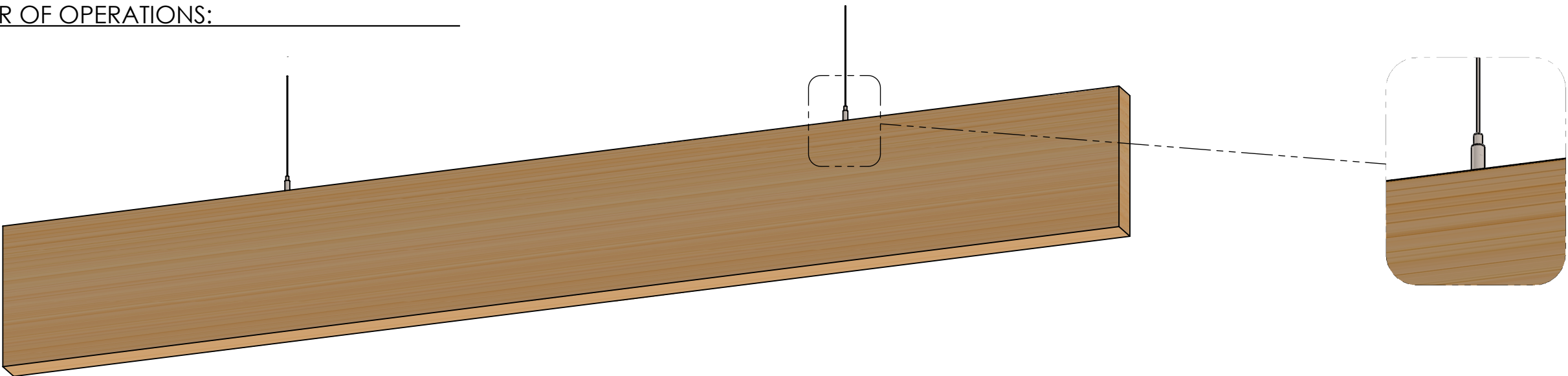
SCALE - 1:5



LODA w/ TWIST CLIP - PLAN

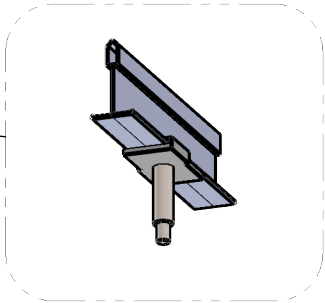
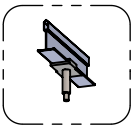
DESCRIPTION: LODA BAFFLES - Wood Veneer Wrapped - 2½" x 12" x 96" - 18" on center - Twistclip w/ Aircraft Cable - Attached to 15/16 T-Bar (by others)		SONUS	
		TITLE: LODA - TWIST CLIP SUSPENDED	
REVISIONS:	PROPRIETARY AND CONFIDENTIAL	FILE NAME:	DATE:
REV 1 - 9/18/2023	THE INFORMATION CONTAINED IN THIS DRAWING IS THE SOLE PROPERTY OF SONUS NORTH AMERICA. ANY REPRODUCTION IN PART OR AS A WHOLE WITHOUT THE WRITTEN PERMISSION OF SONUS NORTH AMERICA IS PROHIBITED.	6.035.01-1-001	10/1/2023
REV 2 - 10/1/2023			
SCALE 1:16	SONUSNA.COM	JOB # 2-6.03	SHEET 3 OF 4

INSTALL  
ORDER OF OPERATIONS:



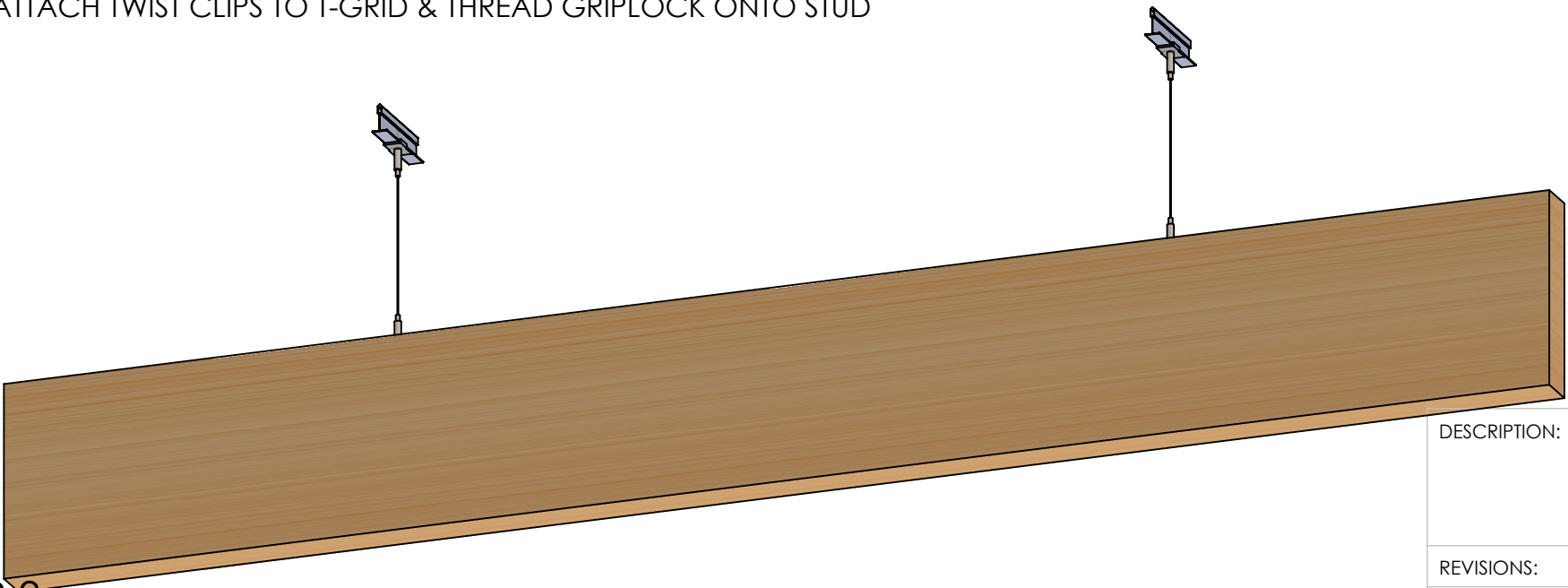
STEP 1

- ATTACH GRIPLOCK TO LODA BAFFLE w/ NUTSERT



STEP 2

- ATTACH TWIST CLIPS TO T-GRID & THREAD GRIPLOCK ONTO STUD



STEP 3

- LIFT LODA INTO PLACE & THREAD AIRCRAFT CABLE THROUGH THE PLUNGER ON THE GRIPLOCKS
- LEVEL AND SECURE WIRE WITH THE PLUNGER
- TRIM EXCESS WIRE

DESCRIPTION: LODA BAFFLES - Wood Veneer Wrapped  
- 2½" x 12" x 96"  
- 18" on center  
- Twistclip w/ Aircraft Cable  
- Attached to 15/16 T-Bar (by others)

REVISIONS:

REV 1 - 9/18/2023  
REV 2 - 10/1/2023

PROPRIETARY AND CONFIDENTIAL

THE INFORMATION CONTAINED IN THIS DRAWING IS  
THE SOLE PROPERTY OF SONUS NORTH AMERICA.  
ANY REPRODUCTION IN PART OR AS A WHOLE  
WITHOUT THE WRITTEN PERMISSION OF SONUS  
NORTH AMERICA IS PROHIBITED.

SCALE 1:10

SONUSNA.COM

SONUS

TITLE:

LODA - TWIST  
CLIP SUSPENDED

FILE NAME:

6.035.01-1-001

DATE:

10/1/2023

JOB # 2-6.03

SHEET 4 OF 4