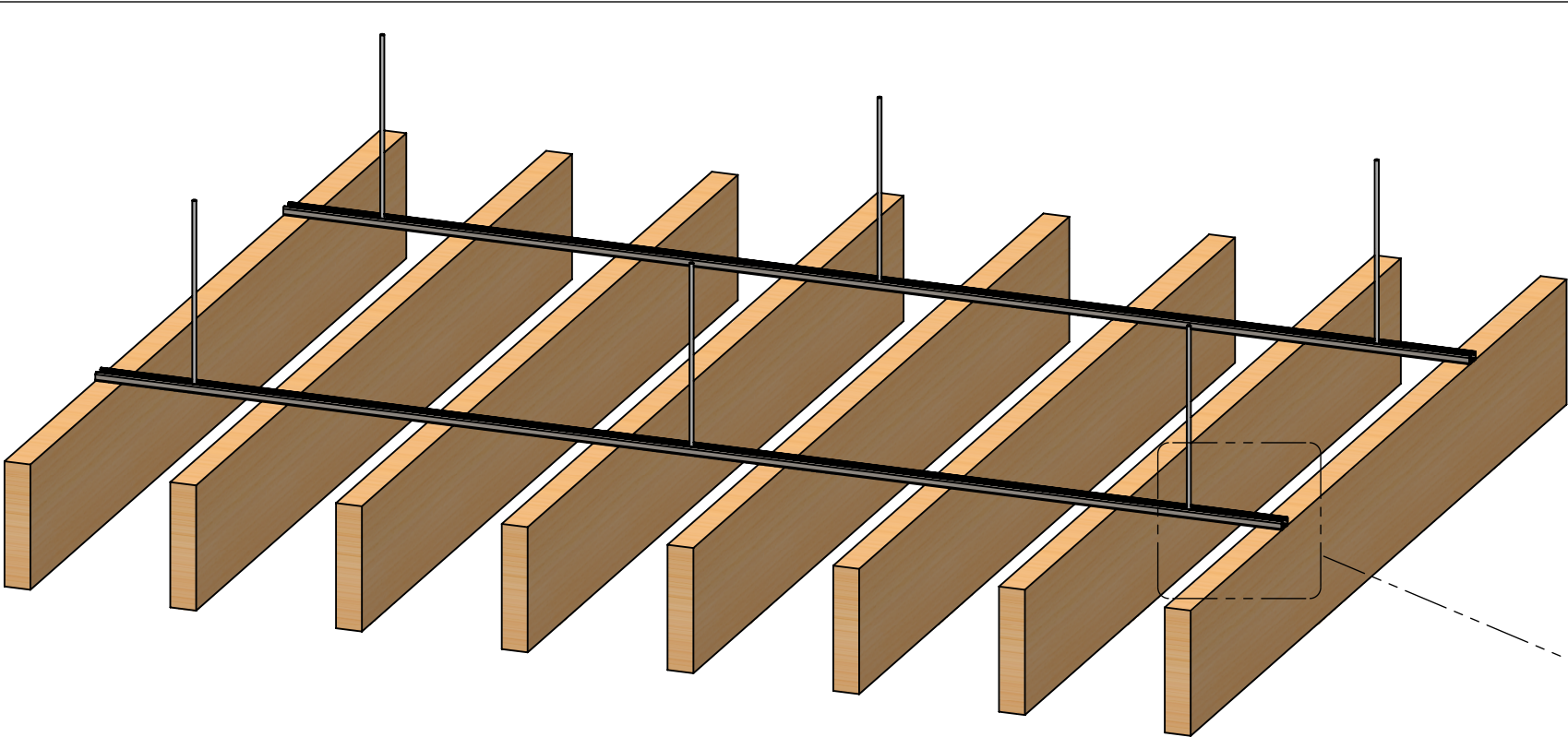


LODA ASSEMBLY - BOTTOM DIMETRIC

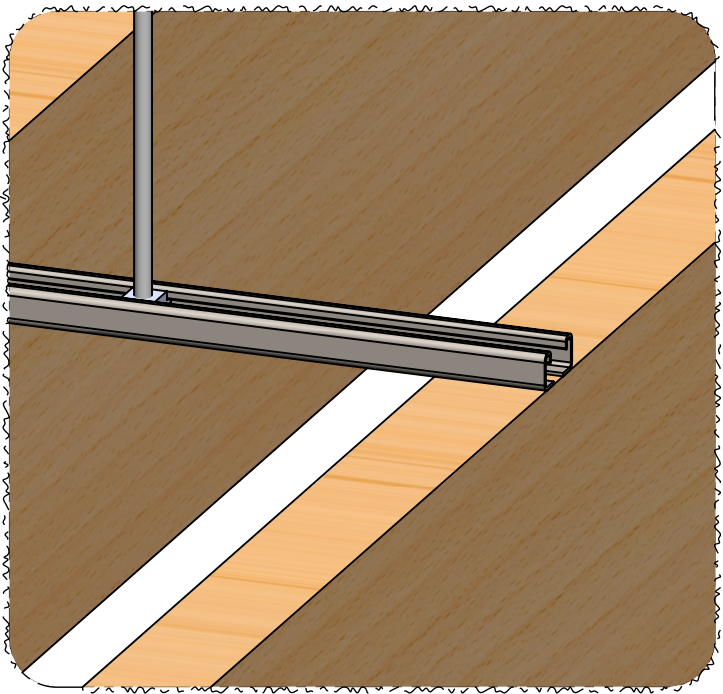
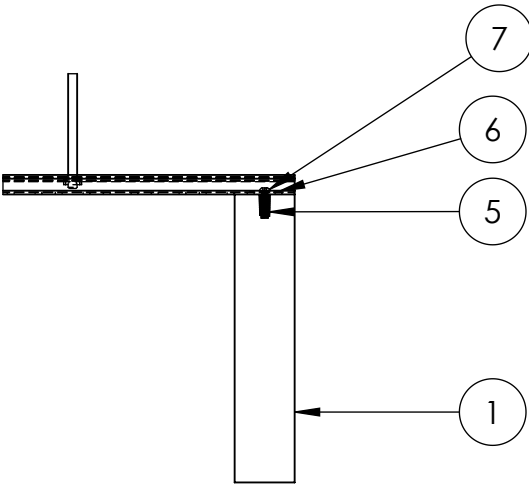
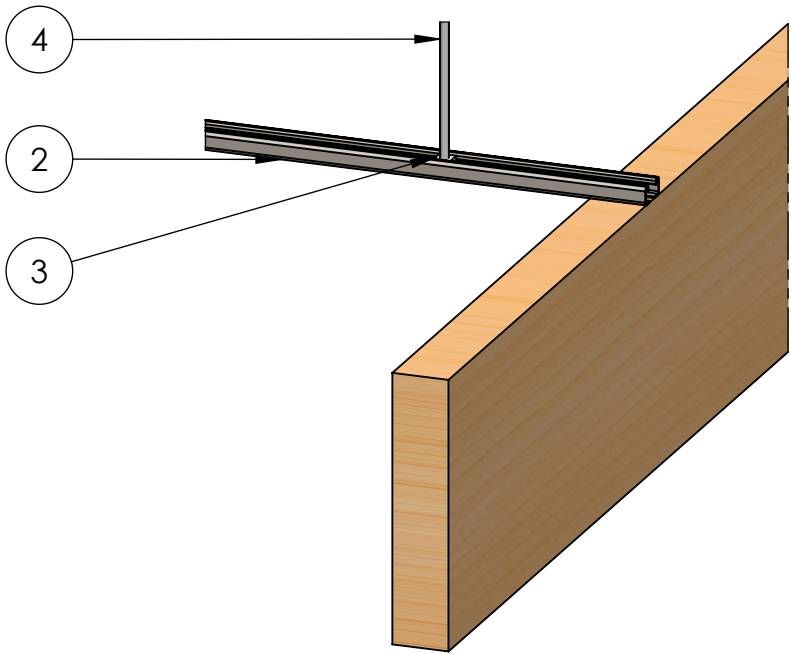
- STANDARD SIZES:
- 48", 72" & 96" LENGTHS
 - 6", 9", 12", & 20" HEIGHTS

DESCRIPTION: LODA BAFFLES - Wood Veneer Wrapped - 2½" x 12" x 96" - 16" on center - Unistrut ceiling attachment		SONUS	
REVISIONS:		TITLE: LODA - UNISTRUT	
REV 1 - 10/1/2023	PROPRIETARY AND CONFIDENTIAL THE INFORMATION CONTAINED IN THIS DRAWING IS THE SOLE PROPERTY OF SONUS NORTH AMERICA. ANY REPRODUCTION IN PART OR AS A WHOLE WITHOUT THE WRITTEN PERMISSION OF SONUS NORTH AMERICA IS PROHIBITED.	FILE NAME:	DATE:
REV 2 - 10/2/2023		6.01-1-101	10/2/2023
SCALE 1:12	sonusna.com	JOB # 2-6.01	SHEET 1 OF 4



ITEM NO.	PART NAME	DESCRIPTION	QTY.
1	LODA Baffle	2½" x 12" x 96" Wood Veneer Wrapped	8
2	Unistrut P4100†	1-5/8" x 13/16", 14 Gage, Slotted	2
3	Unistrut P4006	Channel Nut w/ spring, 1-5/8" series	6
4	All Thread	3/8"-16 Threaded Rod, zinc plated	6
5	E-Z Hex	Threaded Insert - Flanged - 1/4-20 x 25mm	16
6	Oversized Washer	1-1/4" Diameter	16
7	Machine Screw	1/4-20 x 1" Button Head Hex Drive Screw	16

LODA 8 x - ASSEMBLY



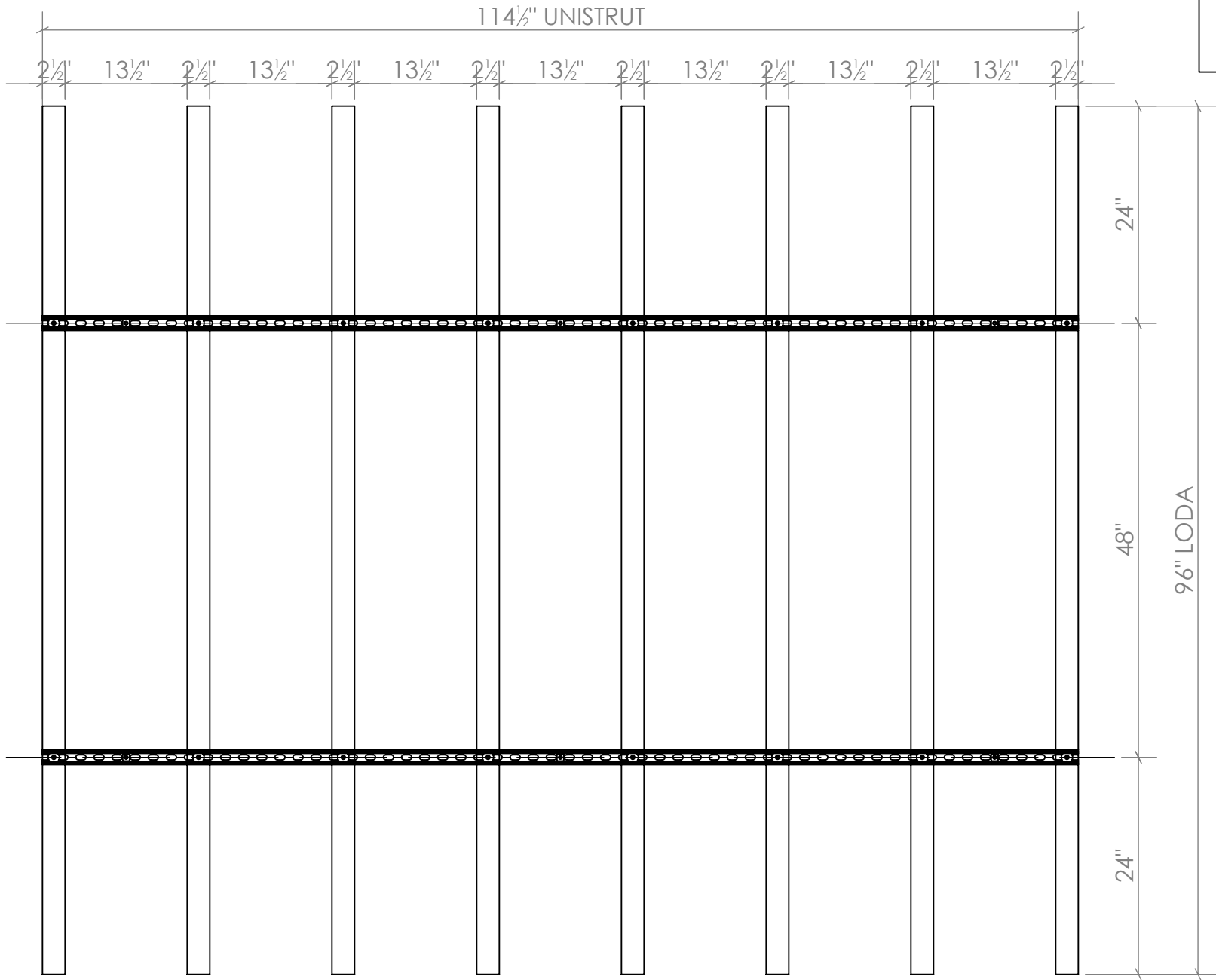
DETAIL A

• SCALE 1:4

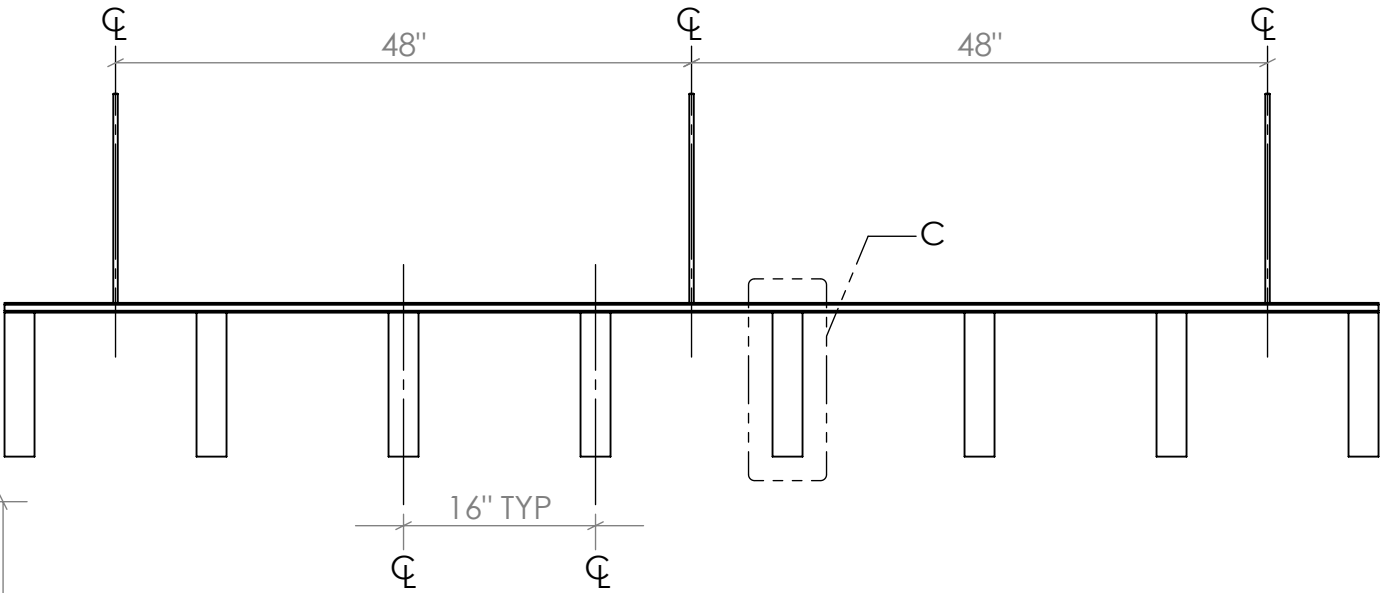
LODA UNISTRUT ATTACHMENT - ASSEMBLY

• SCALE 1:8

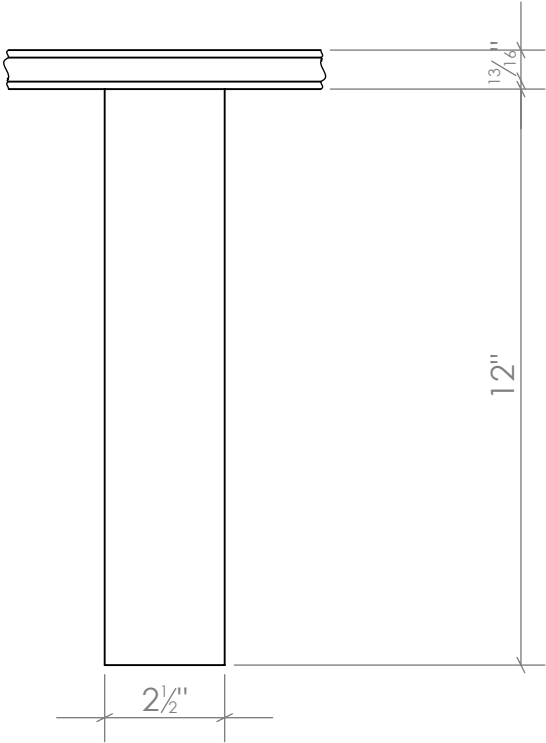
DESCRIPTION: LODA BAFFLES - Wood Veneer Wrapped - 2½" x 12" x 96" - 16" on center - Unistrut ceiling attachment		SONUS	
REVISIONS:		TITLE: LODA - UNISTRUT	
REV 1 - 10/1/2023	PROPRIETARY AND CONFIDENTIAL THE INFORMATION CONTAINED IN THIS DRAWING IS THE SOLE PROPERTY OF SONUS NORTH AMERICA. ANY REPRODUCTION IN PART OR AS A WHOLE WITHOUT THE WRITTEN PERMISSION OF SONUS NORTH AMERICA IS PROHIBITED.	FILE NAME:	DATE:
REV 2 - 10/2/2023		6.01-1-101	10/2/2023
SCALE 1:16		JOB # 2-6.01	SHEET 2 OF 4



LODA 8 x ASSEMBLY - PLAN



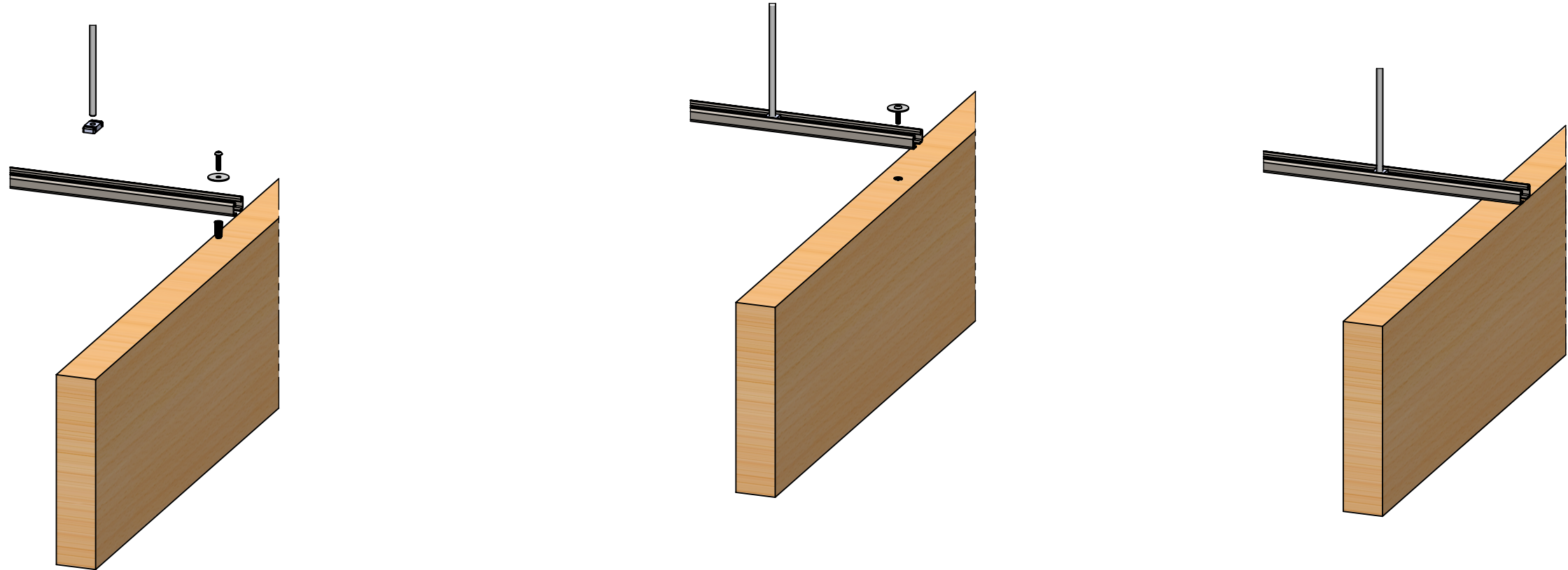
LODA 8 x ASSEMBLY - ELEVATION



DETAIL C

SCALE 1:4

DESCRIPTION: LODA BAFFLES - Wood Veneer Wrapped - 2 1/2" x 12" x 96" - 16" on center - Unistrut ceiling attachment		SONUS	
		TITLE: LODA - UNISTRUT	
REVISIONS:	PROPRIETARY AND CONFIDENTIAL	FILE NAME:	DATE:
REV 1 - 10/1/2023	THE INFORMATION CONTAINED IN THIS DRAWING IS THE SOLE PROPERTY OF SONUS NORTH AMERICA. ANY REPRODUCTION IN PART OR AS A WHOLE WITHOUT THE WRITTEN PERMISSION OF SONUS NORTH AMERICA IS PROHIBITED.	6.01-1-101	10/2/2023
REV 2 - 10/2/2023			
SCALE 1:16	sonusna.com	JOB # 2-6.01	SHEET 3 OF 4



LODA UNISTRUT ATTACHMENT - DIMETRIC

- THREADED ROD
- CHANNEL NUT w/ SPRING
- SCREW
- WASHER
- UNISTRUT
- THREADED INSERT

UNISTRUT, CHANNEL NUT, & THREADED ROD ARE ATTACHED TO THE CEILING

LODA BAFFLE ATTACHED TO UNISTRUT w/ THREADED INSERT THEN SCREW & WASHER INSTALLED FROM ABOVE

LODA

LODA UNISTRUT ATTACHMENT - ELEVATION

- SCALE - 1:4

DESCRIPTION: LODA BAFFLES - Wood Veneer Wrapped - 2½" x 12" x 96" - 16" on center - Unistrut ceiling attachment		SONUS	
REVISIONS:		TITLE: LODA - UNISTRUT	
REV 1 - 10/1/2023	PROPRIETARY AND CONFIDENTIAL THE INFORMATION CONTAINED IN THIS DRAWING IS THE SOLE PROPERTY OF SONUS NORTH AMERICA. ANY REPRODUCTION IN PART OR AS A WHOLE WITHOUT THE WRITTEN PERMISSION OF SONUS NORTH AMERICA IS PROHIBITED.	FILE NAME:	DATE:
REV 2 - 10/2/2023		6.01-1-101	10/2/2023
SCALE 1:8	sonusna.com	JOB # 2-6.01	SHEET 4 OF 4