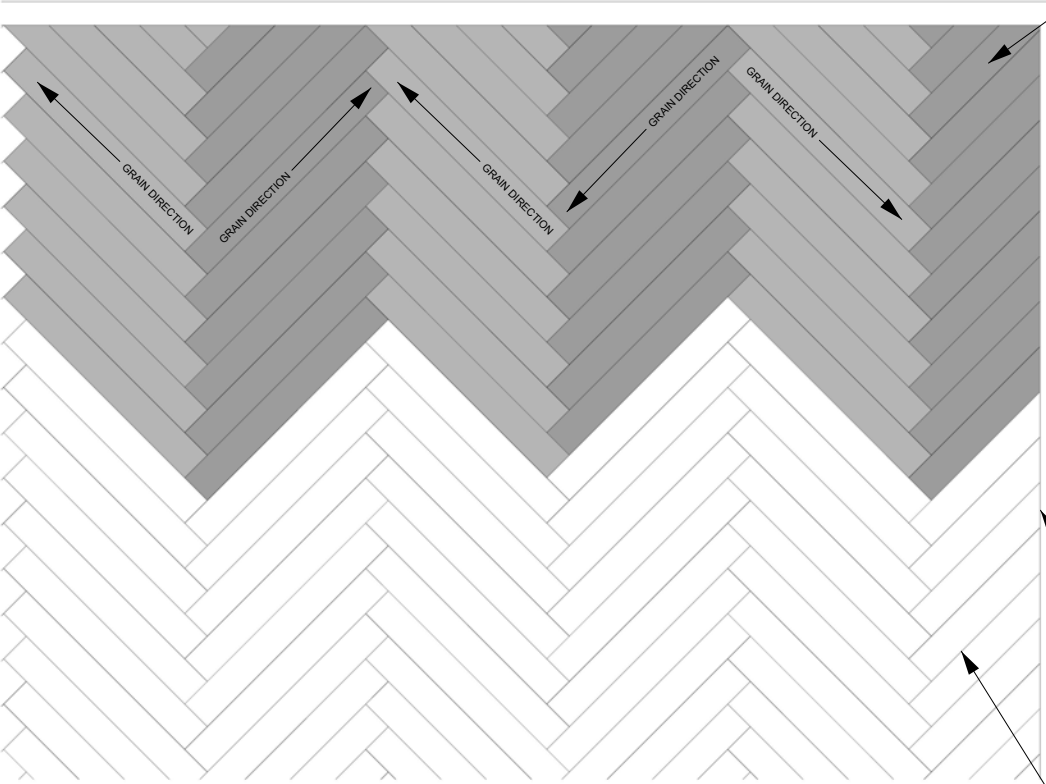
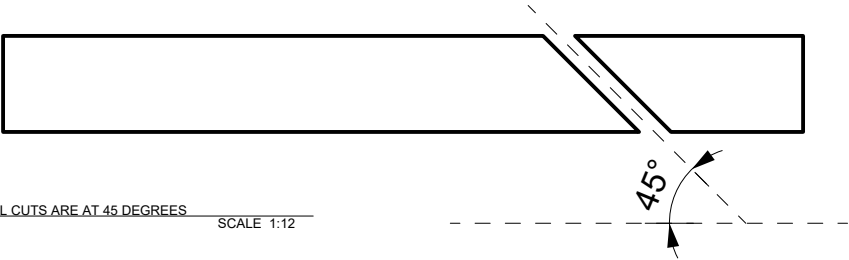
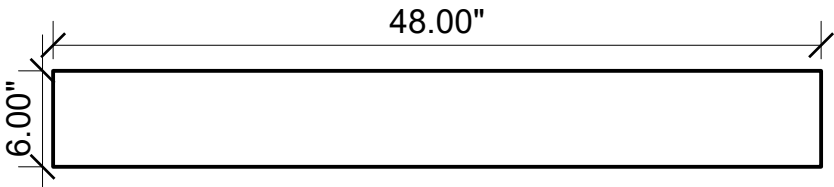
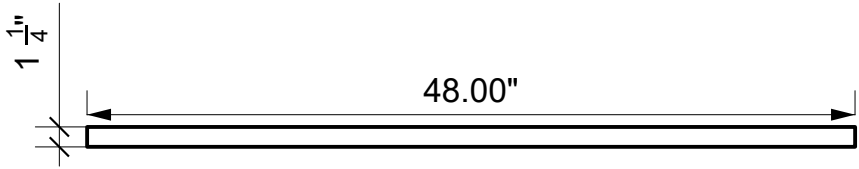


1 ALTERNATING PATTERN IN WOOD GRAIN SCALE 1:36



NOTE:
PERPENDICULAR GRAIN ORIENTATION WILL CAUSE A SLIGHT TONALITY DIFFERENCE BETWEEN PLANKS



2 ALL CUTS ARE AT 45 DEGREES SCALE 1:12

AOUDI PLANK

WALL

LASER CENTER LINE OF ROOM

START AT CENTER OF ROOM

FIRST PLANK POINT

SECOND PLANK POINT

PLANK CENTER LINE

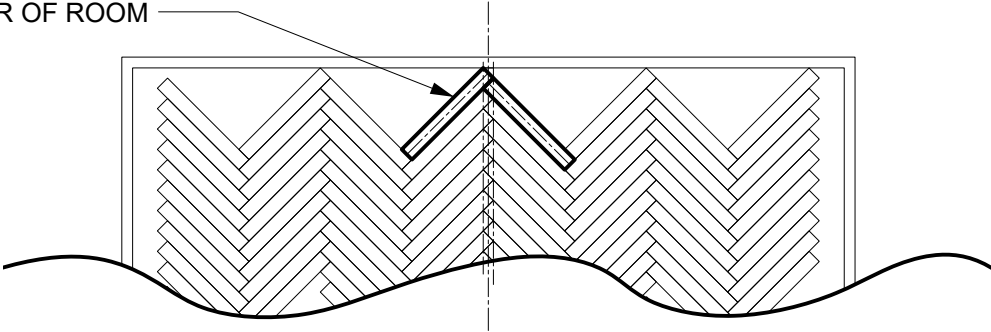
ZERO GAP BETWEEN WALL

ZERO GAP BETWEEN PLANKS

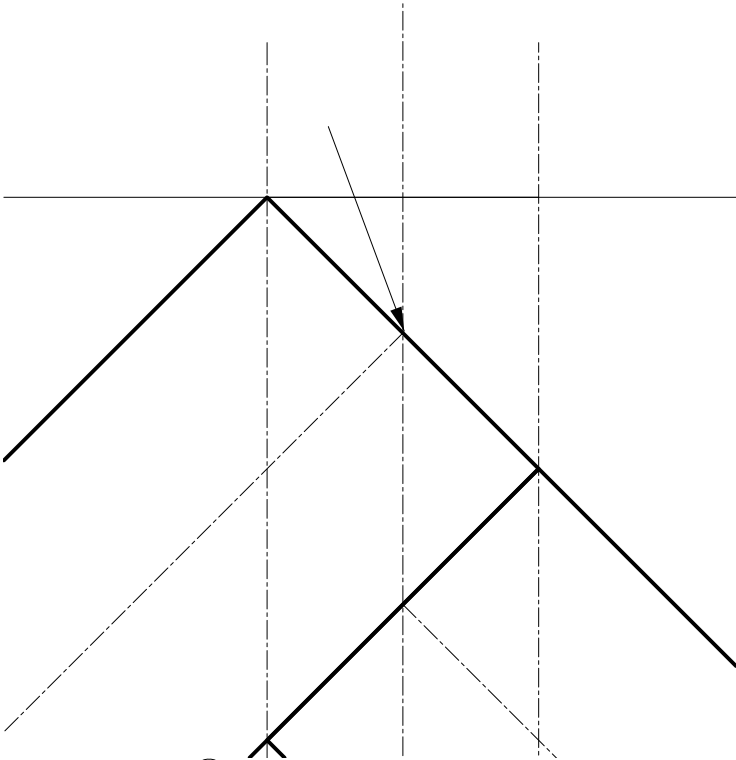
45°

3 ALIGNING PLANKS TO CENTER OF ROOM SCALE 1:6

4 INSTALLING THE FIRST FEW PLANKS SCALE 1:40

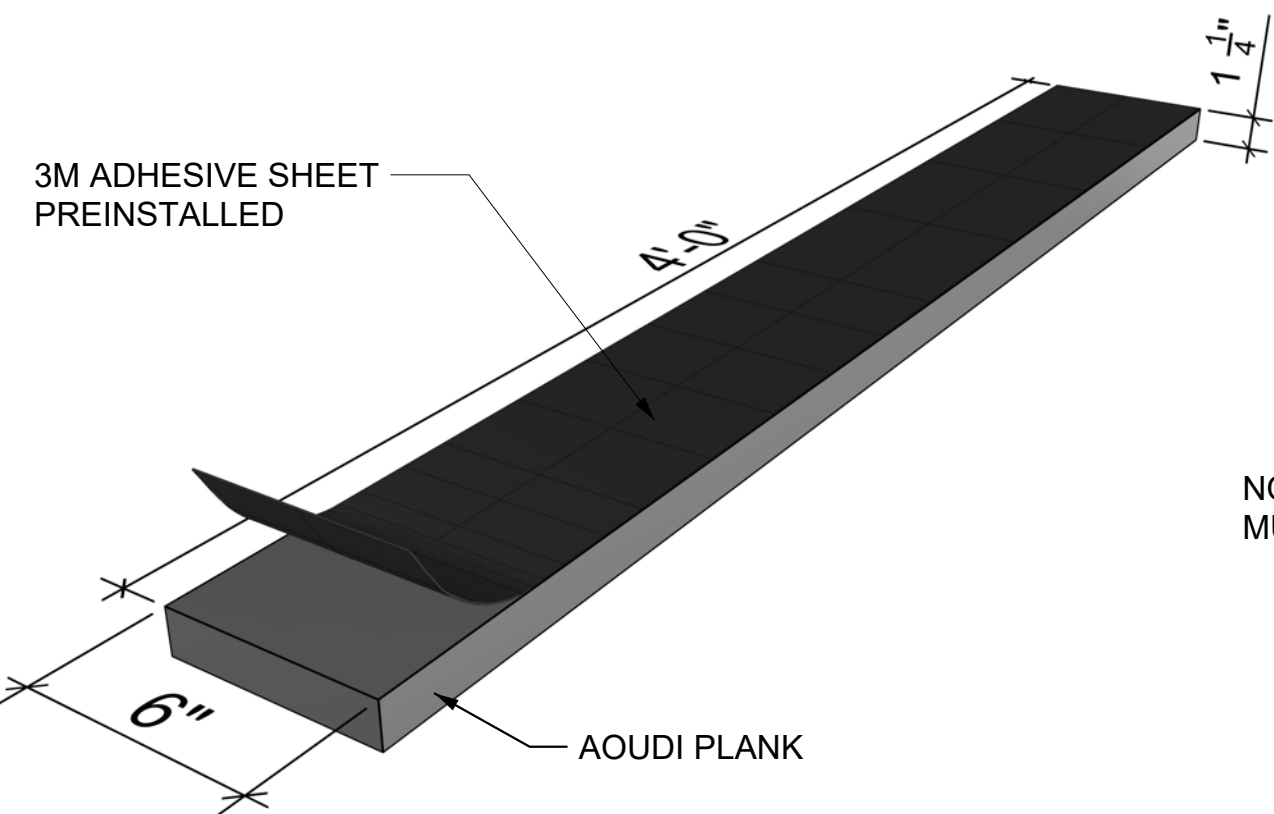


NOTE:
WITH THE GAP REMOVED BETWEEN PLANKS THE LASER CENTER LINE OF ROOM NOW LINES UP WITH THE CENTER LINE OF EACH PLANK



5 ALIGNING PLANKS TO CENTER OF ROOM SCALE 1:3

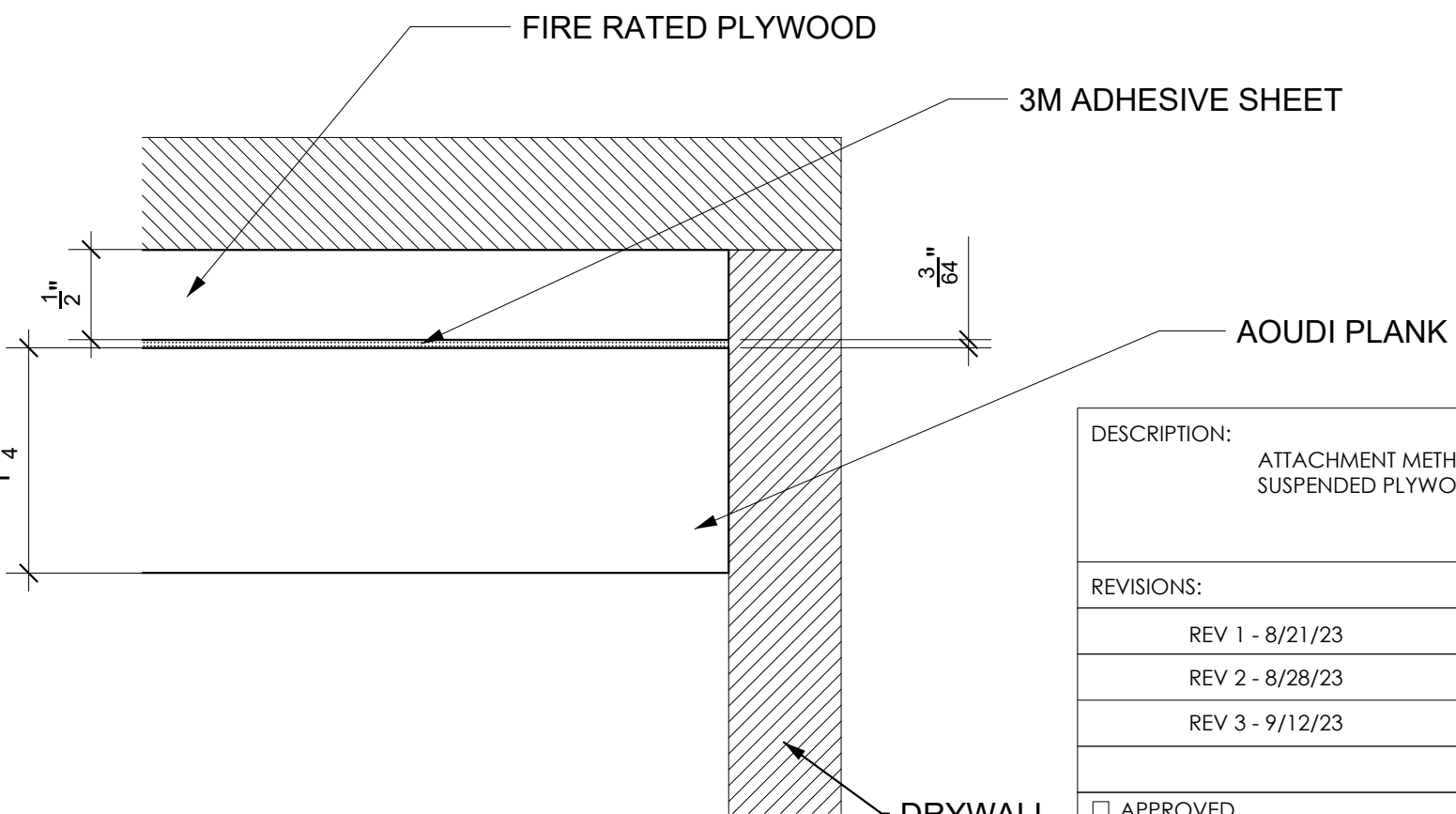
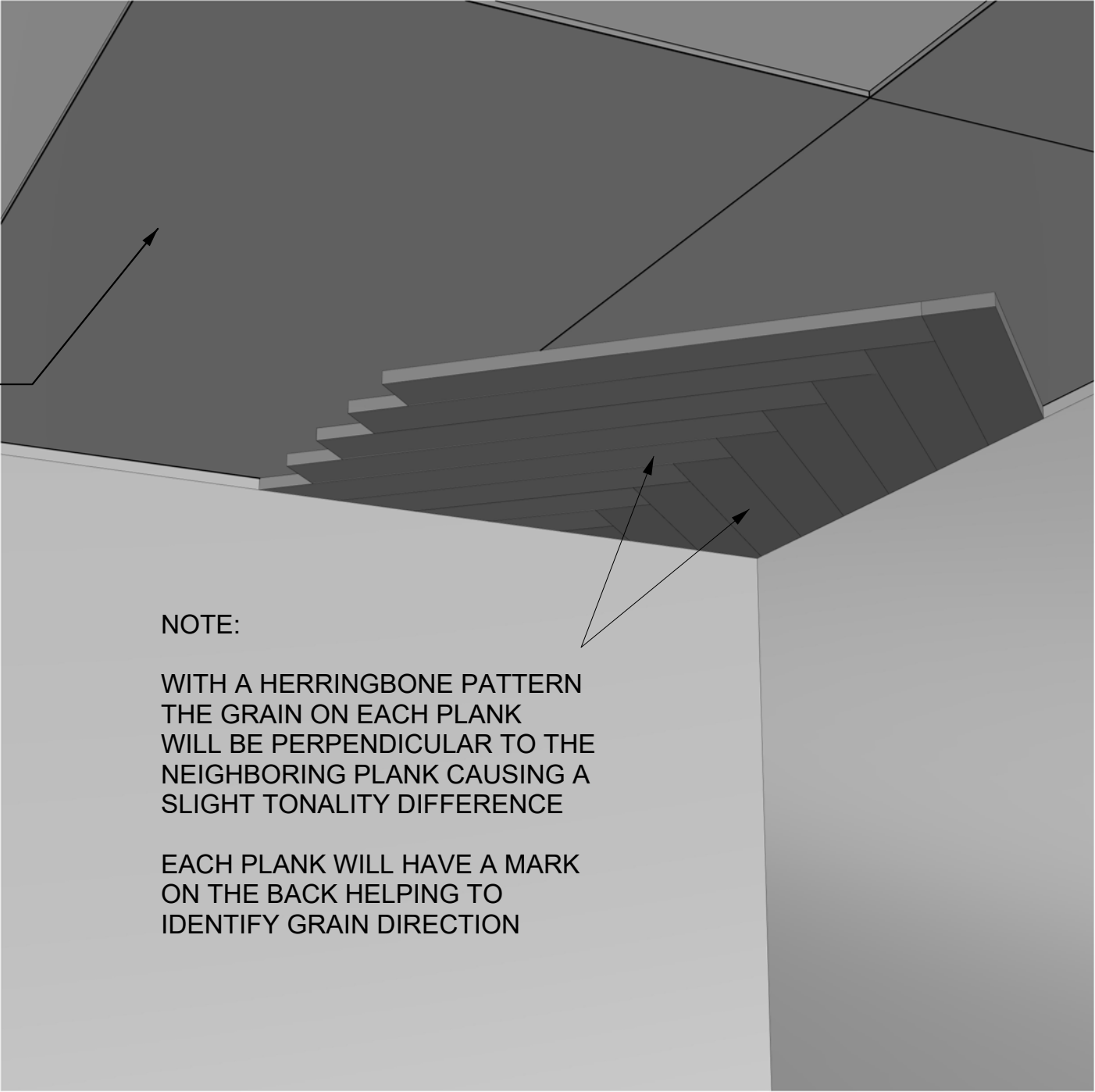
DESCRIPTION:		TITLE: INSTALL DETAILS	
REVISIONS:	PROPRIETARY AND CONFIDENTIAL		
REV 1 - 8/21/23	THE INFORMATION CONTAINED IN THIS DRAWING IS THE SOLE PROPERTY OF SONUS NORTH AMERICA. ANY REPRODUCTION IN PART OR AS A WHOLE WITHOUT THE WRITTEN PERMISSION OF SONUS NORTH AMERICA IS PROHIBITED.		
REV 2 - 8/28/23			
REV 3 - 9/12/23			
		FILE NAME:	DATE: 9/12/2023
sonusna.com		JOB #	SHEET 5 OF 6



1 3M TAPE ON Aoudi PLANK SCALE 1:16

NOTE: FIRE RATED PLYWOOD
MUST NOT BE PAINTED

3 MATERIAL LAYERS SCALE 1:16



2 MATERIAL THICKNESS SCALE 1:1

DESCRIPTION: ATTACHMENT METHOD FOR Aoudi PLANKS TO SUSPENDED PLYWOOD CEILING	
REVISIONS:	PROPRIETARY AND CONFIDENTIAL
REV 1 - 8/21/23	THE INFORMATION CONTAINED IN THIS DRAWING IS THE SOLE PROPERTY OF SONUS NORTH AMERICA. ANY REPRODUCTION IN PART OR AS A WHOLE WITHOUT THE WRITTEN PERMISSION OF SONUS NORTH AMERICA IS PROHIBITED.
REV 2 - 8/28/23	
REV 3 - 9/12/23	
	sonusna.com
<input type="checkbox"/> APPROVED <input type="checkbox"/> APPROVED AS NOTED <input type="checkbox"/> REVISE & RESUBMIT	APPROVED BY: DATE:

TITLE: ATTACHMENT METHOD	
FILE NAME:	DATE: 9/12/2023
JOB #	SHEET 6 OF 6