



sonus



# Elements

## Suspended Baffle Panels



Our most versatile and easily installed baffle system we offer. Meant for suspended and gridded ceiling systems, this modular system simply attaches with built-in magnets. No hardware required. Create your own design using our standard designs and heights transitioning your space into a unique and effective experience.

### Features

- Two-part design offered in 1" thickness, these lightweight and durable substrates consist of the highest quality rigid 6-7lb fiberglass board (greater acoustical performance than PET).
- Don't worry, this modular system is easily installed in the field - no hardware or tools required.
- Offered with 3 different heights and 3 different shapes that can be put together to create unique spaces.
- Designed for 9/16" and 15/16" flat-faced metal grid systems

# Elements

Size	Lengths: 24" and 48"; Height varies from 6" – 15"
Thickness	1"
Tolerance	+/- 1/16"
Core	6-7lb Fiberglass Board
Edge Detail	Hardened
Edge Profile	Square
Mounting Type	Ceiling – Hanging
Mounting Hardware	Magnets pre-installed
Flamability	ASTM 84 Class B
NRC	.50 – slight variations depending on covering

## Our craftsmanship guarantee is really simple:

If there is a craftsmanship defect detected, we will repair or replace the impacted product.

If the product was damaged during shipping and it was because of how we packaged it, we will repair or replace the impacted product.

The length of our guarantee is five (5) years provided you used a Certified PRO Installer; otherwise, it is a standard three (3) years.

For more details, see warranty details on our website.

## Lead Time

**Standard sizes and coverings:** 2–3 weeks

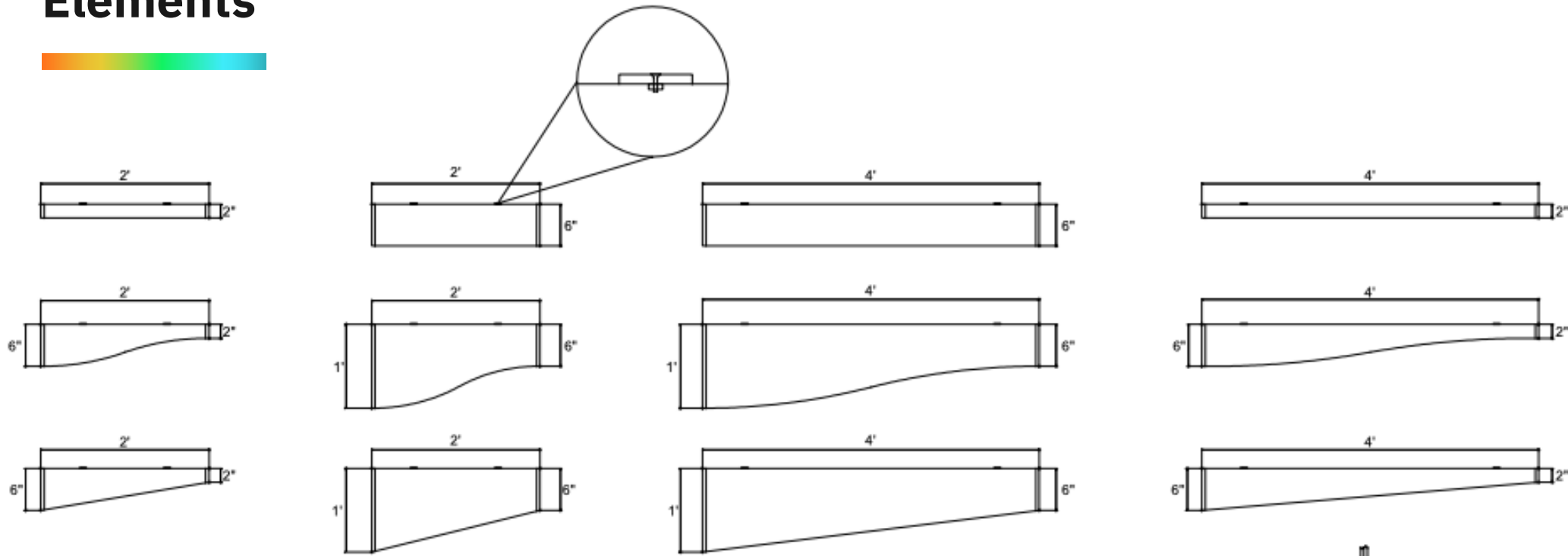
**Custom sizes and coverings:** 6–8 weeks

\* any customer supplied coverings may require additional time for delivery and testing. Additionally, wood veneers require perforation. Any wood veneers not in stock require an additional 4–6 weeks.

## Custom Shop

Need something unique? Want to co-create actionable solutions that improve the human experience? We believe, TOGETHER, we can ideate, design, and build solutions that create unique experiences. Call us to discuss our Custom Shop program.

# Elements



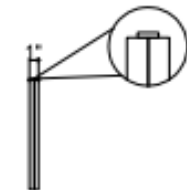
**Notes:**

Element baffles are compatible with 2' x 2', 2' x 4' and 4' x 4' tee grid with a flat 9/16" and 15/16" cross section at 8' or higher ceiling height. For a solid connection, the grid and tile must be flat. Tegular tile will impede the magnet or be pushed up by the baffle.

Standard pendent and standard concealed pendent sprinklers at 15 PSI, 22 GPM have a spray pattern of 4' diameter at 6" down from the sprinkler head. The 2" element baffle will not impede the spray pattern of the sprinkler heads.

**Sound Absorption**

Hz	125	250	500	1000	2000	4000	N.R.C
DAP-1"	.22	.30	.45	.63	.68	.63	.50



# Elements







## Standard

	<b>Birch</b> 2335-2129-GOM-STD		<b>Orchid</b> 2335-2843-GOM-STD
	<b>Geranium</b> 2335-2084-GOM-STD		<b>Onyx</b> 2334-20116-GOM-STD
	<b>Turquoise</b> 2335-2841-GOM-STD		<b>Lapis</b> 2335-2094-GOM-STD
	<b>Graphite</b> 2758-2375-COM-STD		<b>Shade</b> 2758-2372-GOM-STD
	<b>Chicory</b> 2758-1205-GOM-STD		<b>Pumpkin</b> 2335-2021-GOM-STD

## Premium

Premium fabrics may require special order. Additional lead times and charges apply

	<b>Talc</b> W16952-02-Knoll-PRM		<b>Sharkskin</b> W884-13A-Knoll-PRM
	<b>Target</b> W884-10A-Knoll-PRM		<b>Electrum</b> W169510-10-Knoll-PRM



Monitors and printers vary. Please request a material sample to verify materials and colors.