

Installation Instructions

(Impaler Clips)



Tools needed:

- Level
- Phillips Screwdriver or Drill
- Pencil

Included Hardware:

- Impaling clips

Hardware Not Included:

- # 6 - 1-5/8" screws - 2 per clip
- Anchors (optional)

4 Easy Steps!

- Place panel on wall and make a light mark on the wall where the center point of the top of the panel meets the wall
- From center point measure impaler clip locations using template (by applicable size)
- Simply, place one pencil mark to represent center and top screw hole of impaler.
- *Does not require perfection!*

- Mount impaler clips with standard drywall screws (1-5/8" long).
- Use anchors when no studs are present.

Most important step!

- Place panel over clips 5/8" higher than center mark - do not apply any pressure on panel. Once positioned, then:
 - Push panel towards the wall; then pull down on panel from the top (firmly but not excessively)
 - Use level to make slight adjustments

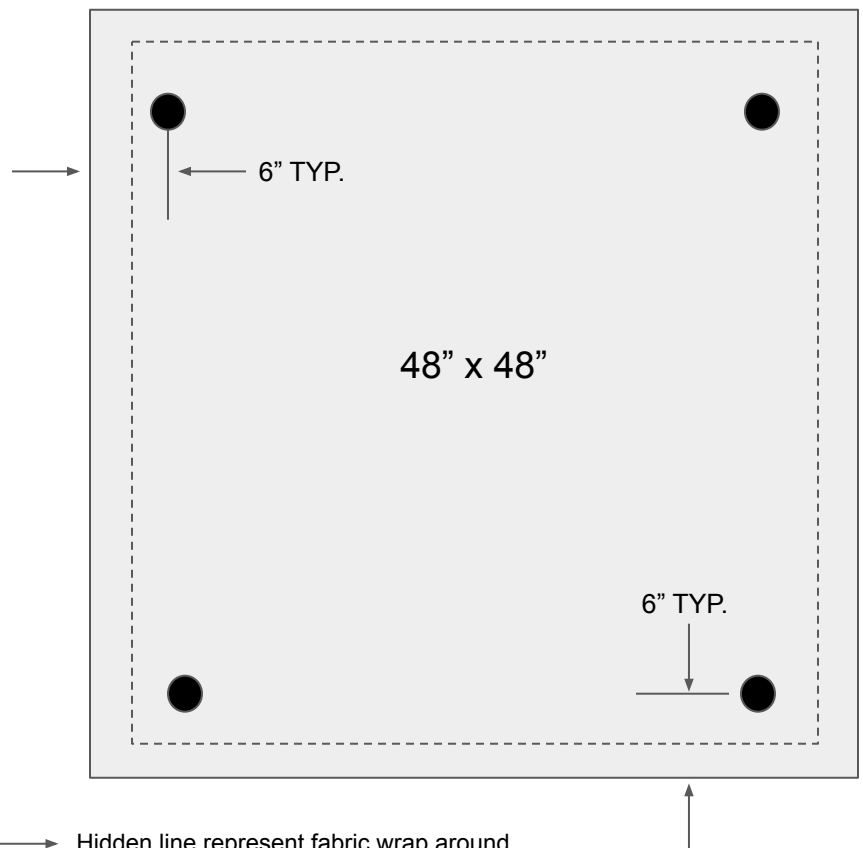
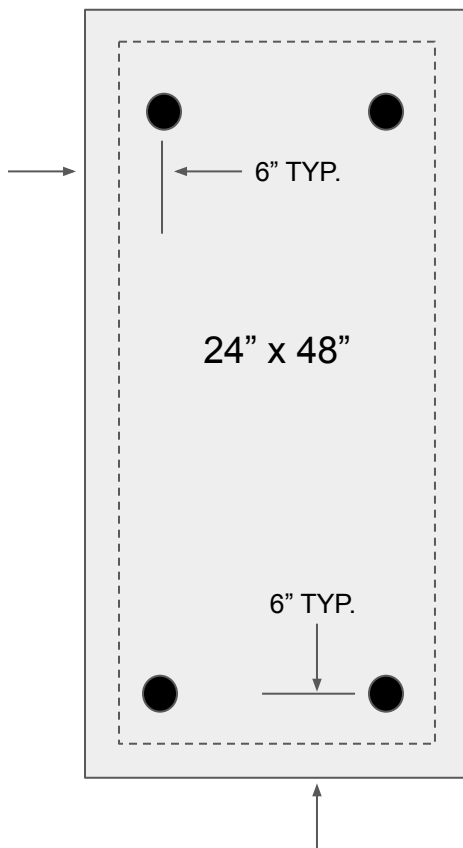
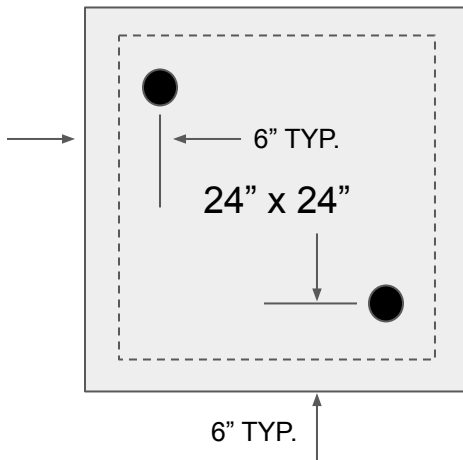
Note: perfection only needed if panels butt up against each other. Recommend using laser level or tape to identify center of 4 panels or more.

Template and Clip Location Guidelines by Size of Panel



Standard number of clips per panel:

Panel Size	# of Clips/Anchors
Up to 24"	2
24" x 48"	4
48" x 48"	4
48" x 72"	6
48" x 96"	6-8
48" x 120"	8



The following are installation guidelines for frequently specified panel sizes:

- Install clips or anchors into the back of the acoustical panel. Install clips or anchors a minimum of 6" from all panel corners and edges
- Use CMU screws for mounting on concrete or masonry
- When putting panels in a group butted up to each other, use a laser or tape to level
- Avoid pulling or stretching the fabric during installation
- Drawings indicate recommended anchor placement and quantities per panel size

Note: Drawings above are not to scale and are for approximate placement purposes only