

WHY CHOOSE MELRO?

- ✔

Capture and use your free roof water
- ✔

Maximum water holding strength
- ✔

AS/NZS 4766 Certification and Testing
- ✔

ISO 9001 Quality Certified System
- ✔

Colour palette for Australian landscapes
- ✔

Range with the right sizes and shapes
- ✔

Quality manufacturing and scheduling system
- ✔

10 year guarantee
- ✔

Designed, manufactured and supported in Victoria
- ✔

Supplied with everything you need to hold water
- ✔

Configurations suit most applications
- ✔

Custom options available
- ✔

Potable water approved
- ✔

Food grade materials
- ✔

UV stable, long lasting outdoor life

ROUND WATER TANKS

Round tanks offer the best value for money in water storage in a wide variety of sizes. Multiple tanks are easily connected together to increase storage capacity; please see the Melro website for guidance. Tanks up to 5500 litres are supplied with a 25mm ball valve and multiple plugged outlets to suit most applications. Larger tanks are supplied with quality brass gate valves.

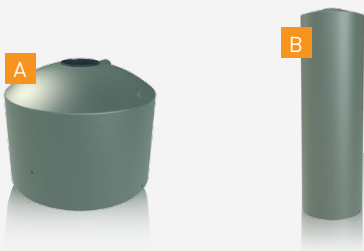


Litres	Diameter	Total height	Inlet height
500	825mm	1166mm	1166mm
650	700mm	1850mm	1850mm
800	800mm	1775mm	1775mm
1000	825mm	2080mm	2080mm
1600	1100mm	1893mm	1893mm
2100	1250mm	1850mm	1830mm
2500	1250mm	2195mm	2175mm
3500	1525mm	2100mm	2075mm
4020	1660mm	2120mm	2100mm
5500	2000mm	2050mm	2000mm
10100	2400mm	2530mm	2405mm
16500	3100mm	2500mm	2416mm
24000	3500mm	3000mm	2670mm
35000	4100mm	3050mm	2775mm

ROUND SQUAT & TALL

Squat tanks allow easy access to the inlet strainer. Their reduced height means they can receive rainwater from a low roof. They are also an ideal choice as a header tank; their wide footprint enhances stability when elevated.

Tall tanks provide a substantial head pressure boost before external pumps are required, and they achieve this within a remarkably small footprint. This tank is often used in industrial storage applications, and is available with a cone end.



SLIMLINE WATER TANKS

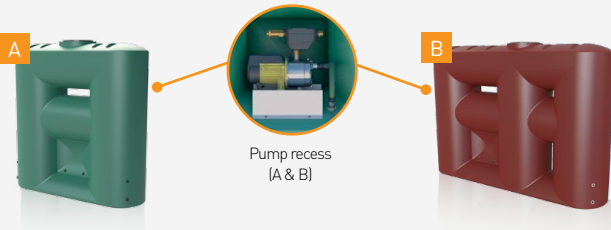
Slimline tanks suit limited space applications, and are a great option for people seeking an alternative look. All slimline tanks are supplied with a 25mm ball valve and multiple plugged outlets to suit left or right hand installation and can be easily connected together to increase storage capacity.



Litres	Ref.	Depth	Width	Height
2000	A	895mm	1500mm	2050mm
2008	D	550mm	2400mm	2150mm
2020	C	640mm	2170mm	2100mm
2030	E	600mm	2300mm	2010mm
2510	B	800mm	1900mm	2150mm
3000	C	800mm	2500mm	2150mm
3100	E	775mm	2500mm	2135mm
4000	E	900mm	2750mm	2150mm
5000	C	1020mm	3100mm	2175mm

SLIMLINE TANKS WITH INTEGRATED PUMP RECESS

Slimlines with pump recesses are the ideal choice for builders and plumbers for fast installation and a clean look. These tanks are supplied with a choice of factory fitted quality domestic pumps featuring automatic mains water backup systems.



Litres	Ref.	Depth	Width	Height
2060	A	700mm	2000mm	2050mm
3060	B	700mm	2900mm	2040mm

SLIMLINE SQUAT

Squat slimlines are often chosen when an uninterrupted view from an external window is required. They allow easy access to the inlet strainer, and can receive rainwater from a low roof. These tanks are also useful where height access to the tank pad is restricted.

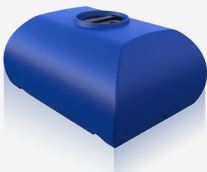


Litres	Ref.	Depth	Width	Height
2007	A	912mm	2895mm	1150mm
3007	B	912mm	2895mm	1650mm

CARTAGE TANK

Baffles are available as an option if required.

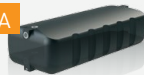
Type	Cartage tank
Litres	2000
Length	1970mm
Width	1530mm
Height	955mm



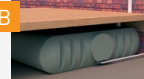
UNDER DECK TANKS

Suits under deck spaces and low areas.

2000 under deck kit
Tank dimensions optimised for typical under deck installations.



Slimline under deck kit
Factory modification for horizontal slimline installation.



Litres	Ref.	Length	Width	Height
2000	A	2750mm	1200mm	720mm
2020	B	2100mm	2170mm	640mm
2030	B	2010mm	2300mm	600mm
2510	B	2150mm	1900mm	800mm
3000	B	2150mm	2500mm	800mm
3100	B	2135mm	2500mm	775mm
4000	B	2150mm	2750mm	900mm
5000	B	2175mm	3100mm	1020mm

COLOUR SELECTION

Melro tanks are available in a wide palette of colours. Our website lists common colour name equivalents and non-standard colours that are available upon request.

Colours in this brochure are indications only. The printing process cannot accurately reproduce true product colour.

Smooth Cream	Merino	Wheat	Birch Grey
Beige	Earthtone	Jasper	Metal Grey
Slate Grey	Monument	Black	Mountain Blue
Heritage Red	Mist Green	Rivergum	Heritage Green

ACCESSORY RANGE

Common accessories delivered with Melro water tanks are set out below. Please ask your water tank reseller for advice.



Mains top up kit

Automatic mains water valve for continuous water supply to toilets and laundry if tank empties.

Standard	400mm
Small round tanks up to 2500L	300mm
24000L & larger	500mm



Water pump

General purpose pump with pressure control and dry run protection up to 60L/min and a maximum 40m head height.

House pumps with automatic mains water backup, available in standard (external) or submersible (in tank) options for single and multi-storey houses.



Pump cover

Available in all standard tank colours.

Length	610mm
Width	350mm
Height	480mm



Fire hose VIC CFA adaptor kit

An additional factory installed outlet, plus a gate valve and VIC CFA adaptor. The standard tank outlet is usually moved to a higher position to reserve firefighting water for this second outlet.



Hose connection kit

600mm or 1500mm length of food grade suction hose with 25mm male threaded hose tails.

ROTOMOULDING SERVICES



STORAGE VESSELS

- Stormwater Retention & Detention Tanks
- Industrial Tanks & Cone Tanks
- Chemical, Fertiliser & Molasses Tanks
- Plastic Fabrication
- Rotolining

DESIGN AND CONTRACT MOULDING

- Furniture
- Planters
- Vehicles
- Noise Wall Panels
- Your Design

Visit melro.com.au for more information about custom moulding services or contact our team on 03 5940 4334.

FOUR STEPS TO INSTALLING YOUR WATER TANK



Your water needs

Establish your required water usage for the garden, pool, spa etc. Determine the rainfall in your area, your catchment (roof) size and available space to place your tank. It is best to be generous when estimating your water requirements.



Choose your tank

Melro recommends you choose the largest tank to suit your site. In narrow spaces, multiple thinner tanks can be linked together to achieve your storage capacity; please see the Melro website for guidance notes. Fitting locations should be checked at this stage. All tanks are available in a range of standard colours. Special colours are available upon request.



Site preparation

Before you order your tank, please double check pathway dimensions to confirm that it can be moved into position. If you're having your tank delivered, check you have sufficient clearance for the delivery vehicle which can be up to 19m in length, 3m wide and 4.5m tall. Measure clearance under trees, through gates and doors just to be sure. Tanks require a level, stable base capable of supporting the weight of the tank when full.



Installation

Melro recommends use of a qualified tradesperson to carry out installation work, according to the regulations applicable in your local area. Customers must ensure all plugs and tank connections are sealed correctly. Detailed installation instructions are available on the Melro website, and are also supplied with your tank. Your reseller should be able to arrange installation and assist with a range of tank accessories including pumps, first flush diverters and water level indicators.

DELIVERY

Tank delivery

Please check with your store's irrigation expert for delivery. Additional charges may apply for deliveries outside the shaded area. Tanks 24000 litres and above are oversized loads and may require Vicroads permits at an additional charge depending on your location.

Scheduling

We will do our best to deliver to your timetable, but for speediest delivery being flexible helps. Please advise when ordering if you have access restrictions or special requests.

Vehicles on site

Melbourne Rotomould delivery vehicles are up to 19 metres in length, 3.5m wide and 4.5m tall. Our vehicles may only enter your property provided:

- it is safe to do so
- clear access is provided for the vehicle (suitable pathway, adequate clearance each side and clearance above – this includes tree branches)
- there is no risk of damaging the vehicle, the tank or your property (for example, we will not move tanks over a sealed driveway)
- it can be done within a reasonable time frame (10 minutes)

Otherwise, tanks will be left at the nearest practical location at our driver's discretion.

Tanks on site

Our drivers can generally place tanks next to the truck only. If tanks need to be positioned onsite, customers must arrange further assistance. The points listed above in 'Vehicles on site' also apply when moving tanks. Round tanks 10100 litres and above and slimline tanks 4000 litres and above are extremely heavy; customers must arrange at least two able bodied people to assist the driver with unloading.



CONTACT US

Melbourne Rotomould
1/17 Bormar Drive, Pakenham
Phone: +61 3 5940 4334
Facsimilie: +61 3 8677 1795
Email: melro@melro.com.au
Web: www.melro.com.au

YOUR LOCAL DEALER IS:

TANK FIT OUT

Slimline Tanks

INSTALLED: INLET STRAINER, OUTLETS (FEMALE) & OVERFLOW
SUPPLIED: BALL VALVE, OUTLET PLUGS, OVERFLOW STRAINER

2008, 2020 & 3000 Tanks (REVERSIBLE LEFT TO RIGHT)



2007 & 3007 Tanks



All other Slimlines

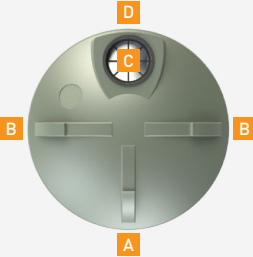


Overflow pipe can run left or right

Round Tanks

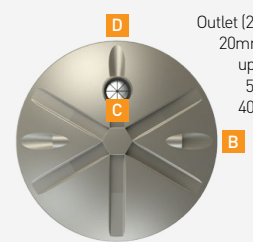
INSTALLED: INLET STRAINER, OUTLETS (FEMALE) & OVERFLOW
SUPPLIED: BALL VALVE, OUTLET PLUGS, OVERFLOW STRAINER

Small Round Tanks up to 5500 litres



4500 Tall, and Large Tanks 10100 litres and above

INSTALLED: INLET STRAINER, BRASS OUTLET (MALE/FEMALE),
OVERFLOW
SUPPLIED: GATE VALVE AND OVERFLOW STRAINER

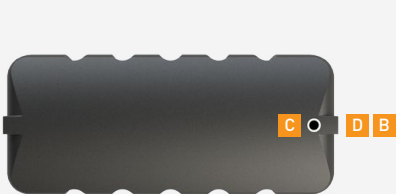


Outlet (25mm male/
20mm female) is
up-sizeable to
50mm male/
40mm female

Underdeck Tanks

NOTE: UNDERDECK TANKS HAVE NO INLET STRAINER.
MELRO RECOMMENDS INSTALLATION OF A FILTRATION DEVICE
AT AN ACCESSIBLE POINT ON THE INCOMING DOWNPIPE.

2000 litre Underdeck Tank



Slimline underdeck conversion



A 20mm bucket tap outlet, 360mm from ground **B** 25mm outlet **C** Inlet **D** 90mm overflow

Custom Fitout

For custom options, visit the Tank Range page at melro.com.au. Here you will find custom order forms for your tank type. Click on the *Drawing for Markup*

link to download an order form. Simply print, fill in your specific details and hand the completed form to your tank supplier when ordering your tank.



Melro Water Tank Range

Melbourne Rotomould | melro.com.au



Made in Australia