



End-to-End Dx of **Naphtha Cracking** **Complex Operations**

Fortune 500 Petrochemical Major Case Study

Problem Statement

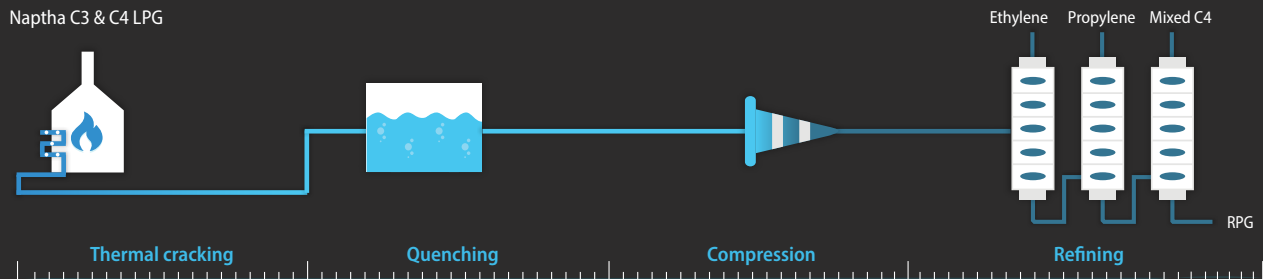
While being their biggest asset, data was the customer's biggest bane when it came to performance oversight and analytical insight.

A confluence of 25+ IT/OT data streams, such as 141,000 time-series tags and numerous applications such as SAP, ASPEN APS, LIMS, etc., supported their day to day operations. The manual & fragmented process of extracting performance oversight and insight within the opportunity window was a huge bottleneck.

They had minimal cross-functional visibility across plant and business operations that resulted in production losses, operational inefficiencies, higher energy cost, downtime, idle inventory, accidents, and near-misses.

Solution

UNLSH addressed this critical issue by cohesively blending all of the IT & OT data, and the analytics into real-time Operations Digital Twins (ODTs). The ODTs, which are contextualized cyber replicas of the customer's entire manufacturing operations, now delivered cross-functional intelligence through their visualization layer. With UNLSH's no-code workbenches, this major data leveraging, analyzing, and contextualizing endeavor was completed within 14 weeks.



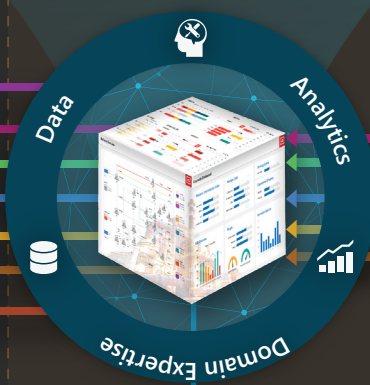
Disparate Data

- http, XML
- Triple Point CXL, Bulldog, etc.
- SAP (R/3, ECC 6, HANA)
- RDBMS (SQL, Oracle, TIBCO, etc.)
- Historian (PI, PHD, IP21, etc.)
- OPC DA/HDA
- OPC UA
- MQTT

Ingest

Harmonize, Homogenize, Contextualize

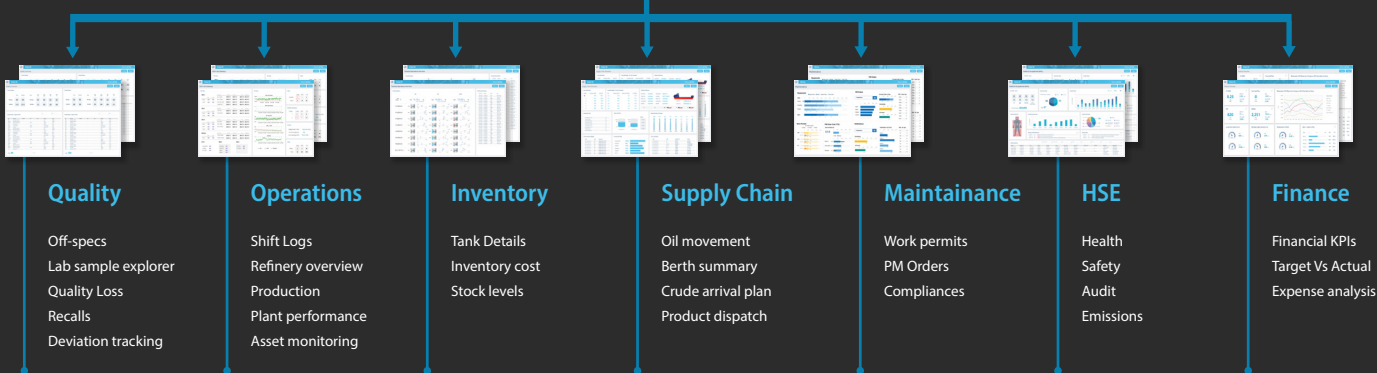
Serve



Typical Consumers

Meaningful data, Contextualized in terms of Business Objects through Industry Standard API

- Dashboards**: Power BI, XHQ, Tableau
- Reports**: [Icons]
- Cloud**: Azure, AWS, Google Cloud
- 3rd Party Digital Twin**: Azure, OSIPIAF
- Application**: [Icons], 3rd party Optimization, Simulation, AI solutions, etc.



Impact

Unprecedented data-driven oversight, insight, and foresight leading to reduced production loss, downtime, accidents, near-misses, non-compliances, and elimination of delayed manual reporting, non-harmonized Excel-based performance metrics, functional miscoordination, etc.

1%

Estimated Impact of
Improvement in Operations Cost

USD 50M-75M

Contact

Sales@ddriven.io

for UNLSH PoC/Evaluation License