



Welcome to the Loganhead Wind Farm consultation

This virtual consultation exhibition displays our updated proposals for Loganhead Wind Farm.

Muirhall would very much like to hear your views. As you move around the room click on the boards and hotspots above for more information.

When you are ready to respond you will find the questionnaire on the table by the window.

We would welcome your responses by **11:59pm on 07 March**.



Updates to our proposals

We are now proposing to modernise the Loganhead Wind Farm site since receiving approval in 2019, which will require consent from the Scottish Government.

These updates include:



One additional wind turbine



Taller tip heights, increased to 200 metres



Increased generating capacity from 25.6 to 54 Megawatts



31,000 extra homes supplied each year



44,000 extra tonnes of CO₂ offset each year



Click on this board for more information on the changes being made to Loganhead



Community Investment

At the heart of our projects is our commitment to local people and communities.

Through our new proposals, Muirhall is able to offer a fantastic sector-leading community investment package to the local area.

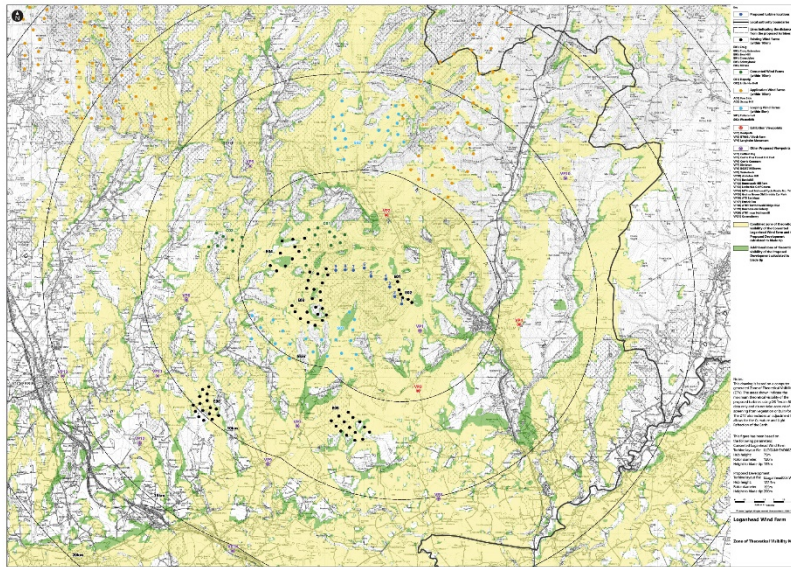


Click on the board for more information on community investment

Landscape Visualisations

In developing our proposals for an updated Loganhead wind farm, we have carefully considered our impact on the local landscape.

A Landscape and Visual Impact Assessment will also be undertaken for this project and will assess the likely effects on the local landscape and visual amenity.



Click on this board for more information on Landscape and Visual effects.



This map shows how far our proposals for Loganhead may be seen. Click on the hotspot above for the full map and to see how Loganhead will look from different locations.

Environmental Effects

The updated Loganhead Wind Farm presents the opportunity to meet increased demand for renewable energy.

In developing our updated proposals for Loganhead, we have carefully considered the impact on the environment.

We will prepare an Environmental Impact Assessment Report to assess the impact of our proposals on:



Noise



Shadow flicker



Ornithology



Geology, hydrology and hydrogeology



Landscape and visual



Traffic and transport



Socio-economics, Tourism and Recreation



Infrastructure and other issues



Historic environment



Ecology



Click on this board for more information on environmental effects and mitigation



Meet the Team

Muirhall Energy is a leading independent developer of renewable energy products, based in Lanarkshire, Scotland.

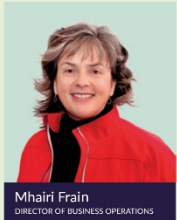
We are proud of our highly qualified team who believe that community involvement is an integral part of the development of Loganhead wind farm.



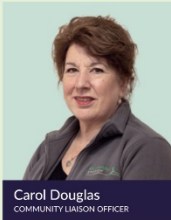
Jason Morin
PROJECT MANAGER



Mike Molleson
SENIOR PROJECT MANAGER



Mhairi Frain
DIRECTOR OF BUSINESS OPERATIONS



Carol Douglas
COMMUNITY LIAISON OFFICER

Get in touch with us:



info@muirhallenergy.co.uk



www.muirhallenergy.co.uk/project/
loganhead



What happens next?

Thank you for taking the time to participate in the Loganhead Wind Farm consultation.

Your feedback is important in shaping our proposals, which we plan to submit to the Scottish Government in Summer 2021.

Indicative Timetable

Pre-application consultation:
22 February – 07 March 2021

Consideration and analysis of feedback:
March 2021

Section 36 application submitted to
the Scottish Government:
Summer 2021

Application considered by
Scottish Ministers:
Q3 2021 - Q2 2022

Decision to grant consent to the project:
2022



Click on this board to
complete the consultation
questionnaire



Click here to view
our proposals for
Hopsrig Wind Farm