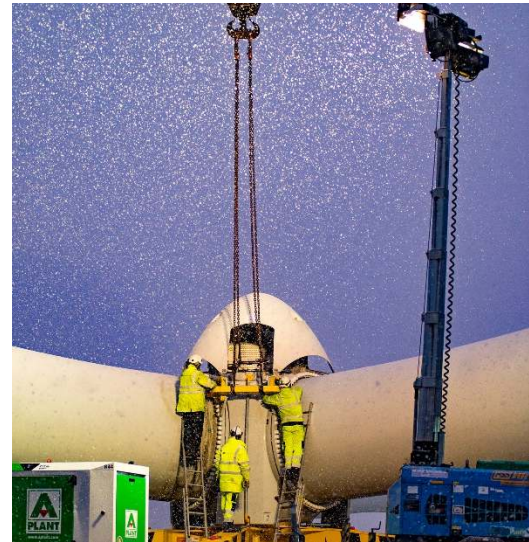


# Loganhead Wind Farm

## Consultation Document

February 2021



# Welcome

to this consultation on our proposals to update existing planning consent for Loganhead Wind Farm.

We want to know your views on these proposed updates.

In this Consultation Document you will find all the information you need to respond to our consultation. This information can also be found in our virtual exhibition at [muirhallenergy.co.uk/project/loganhead](https://muirhallenergy.co.uk/project/loganhead).

When you are ready to respond you will find the questionnaire within the virtual exhibition at [muirhallenergy.co.uk/project/loganhead](https://muirhallenergy.co.uk/project/loganhead). Alternatively, you can respond or submit any questions you may have to [info@muirhallenergy.co.uk](mailto:info@muirhallenergy.co.uk).

The deadline for responding is **11:59pm on 07 March**.

We are also running a separate consultation alongside this one on proposals to update existing planning consent for our Hopsrig wind farm site. You can find the virtual consultation for these proposals at [muirhallenergy.co.uk/project/hopsrig](https://muirhallenergy.co.uk/project/hopsrig).

Muirhall Energy is a leading independent developer of renewable energy products, based in Lanarkshire, Scotland.

Founded in 2011, we have constructed over 80MW of onshore wind projects across the UK which have made a significant contribution to Scottish and UK Government climate change targets.

We strongly believe that community involvement is an integral part of any wind farm development. Through active engagement, we aim to create open and positive relationships with local stakeholders that remain throughout the lifespan of the project.



## Updates to our proposals

Loganhead Wind Farm, by Langholm, received consent in 2019 for 8 turbines of 135m to tip, generating an anticipated 25.6 Megawatts.

Muirhall is now proposing to modernise the site through using larger, more productive 'next-generation' turbine technology.

The proposed changes compared to the consented wind farm would include:



One additional wind turbine, increasing the number of turbines at the wind farm from 8 to 9.



Taller tip heights, with a proposed increase to 200m. Larger, more productive turbines would mean an anticipated increase of **145%** in energy generation.



An increase in generating capacity, from 25.6MW to 54MW, more than doubling Loganhead's contribution in the fight against climate change.



An increase in Scottish homes supplied with clean green electricity each year, from 22,000 to **53,000 homes**.



An increase in the CO<sub>2</sub> offset from fossil fuel production, from 37,000 to **81,000** tonnes of CO<sub>2</sub> displaced every single year.





# Our proposals for Loganhead Wind Farm

Loganhead Wind Farm received planning permission from Dumfries and Galloway Council in 2019.

As our new proposal exceeds 50MW, it requires an application to the Scottish Government, under Section 36 of the Electricity Act 1989.



It is anticipated that the new proposal will consist of:

- 9 Turbines
- A maximum tip height of 200m
- Energy Generation Capacity in excess of 50 Megawatts

The application will include a comprehensive Environmental Impact Assessment (EIA) Report looking at the potential effects from the updated proposals.

The Planning Application will also seek consent for:

- Onsite access tracks
- Crane hardstandings
- Location for Energy Storage
- Borrow pit locations
- Control building, and grid cable route
- Anemometer mast; and
- A construction compound





## The Environmental Case

### *Climate Emergency and Policy*

- The Climate Emergency we currently face requires adequate and immediate action. It is one of the most pervasive and threatening crises of our time.
- In 2019, Dumfries and Galloway Council declared a Climate Emergency and set the target of the region emitting net zero carbon by 2025 – the most ambitious target in Scotland.
- The Climate Change (Emissions Reduction Targets) (Scotland) Act 2019, sets targets to reduce Scotland's emissions of all greenhouse gases to net-zero by 2045 at the latest.

## The Business Case

### *Rationale for Increased Scale of Turbines*

- Improvement in financial viability of project, following discontinuation of government subsidy, which was available when the original application was submitted.
- Merchant electricity prices are at some of their lowest in several years. More recently, market shakeup from COVID-19 is placing even more pressure on energy prices – the expected single source of income for Loganhead.
- Larger, more productive and modern turbines are now available, which maximise efficiency of the wind farm, such that Loganhead is predicted to generate 145% more energy than previously.
- Turbines of <150m, are increasingly more difficult to source and maintain. By the time Muirhall reaches Financial Close, options for turbines of this scale may be quite restricted and have limited warranties.





# Community Investment

Muirhall Energy strongly believes that communities should be an integral part of our wind farm development process and so our work with communities is at the core of every project we undertake.

Through our new proposals, Muirhall is able to offer a fantastic sector-leading community investment package to the local area.

## Community Investment Fund

With all Muirhall wind developments, the company commits to an absolute minimum of £5,000 per installed megawatt, for local community groups to invest in local projects.

The updated proposal at Loganhead will allow this figure to increase to an industry-leading £7,000 per installed Megawatt, as we believe that the community should also experience any uplift in revenue. This means a total increase from £128,000 to **£378,000** per annum. This would equate to over **£10 Million** being invested into local communities over the lifetime of the wind farm.

## Community Ownership

Muirhall Energy works with partner agencies to offer up to 10% shared ownership in each wind farm that is developed. Community Councils and organisations are supported as they consider the benefits of investing in shared ownership.

This excellent opportunity is currently being considered by local groups at our neighbouring Crossdykes Wind Farm, and it is hoped that the community will take up the opportunity to own up to 10% in Loganhead too.



## Initial Investment Fund (IIF)

Muirhall will be offering an IIF for Loganhead, which will be available from the start of construction until all funds are committed.

At our Crossdykes Wind Farm, the IIF attracted a huge amount of interest, with 30 local groups and projects benefiting from just over £100,000. Please view the Crossdykes Case Study Hotspot to see the full list of recipients.

We would hope that an IIF at Loganhead would be equally as well-received.

## Superfast Broadband

For our wind farms to operate at full capacity superfast broadband is required. This involves installing fibre broadband to rural locations which have had no / limited connectivity in the past.

As part of our core community offering at Loganhead, we will look to bring superfast broadband to local homes, businesses, village halls and schools surrounding the wind farm, just as we are in the process of doing at our Crossdykes Wind Farm.

## Training Opportunities

In partnership with 'Springboard UK' - a charity dedicated to promoting hospitality and tourism as the career of choice throughout the UK, Muirhall will pay for extensive training courses for up to 20 local individuals each year in the hospitality sector, for the first 5 years of generation.

This will represent over £200,000 worth of investment, above and beyond the Community Investment Fund.

## Local Electricity Discount Offer

We are currently engaged with two energy providers to focus on the reduction of domestic electricity costs for premises close to our Loganhead Wind Farm. We will consult with the community as plans evolve.





# Landscape & Visual Impact Assessment

As part of the EIA, a Landscape and Visual Impact Assessment (LVIA) will assess the likely significant effects, including cumulative effects of the Proposed Development on landscape and visual amenity receptors.

The LVIA will also include: Night-time Lighting Assessment; and Residential Visual Amenity Assessment (RVAA).

## Landscape Viewpoints

The Viewpoints to be assessed in the LVIA will be agreed in consultation with consultees NatureScot and Dumfries and Galloway Council.

In the Hotspots above this board, you can view 3 of the key Viewpoints:

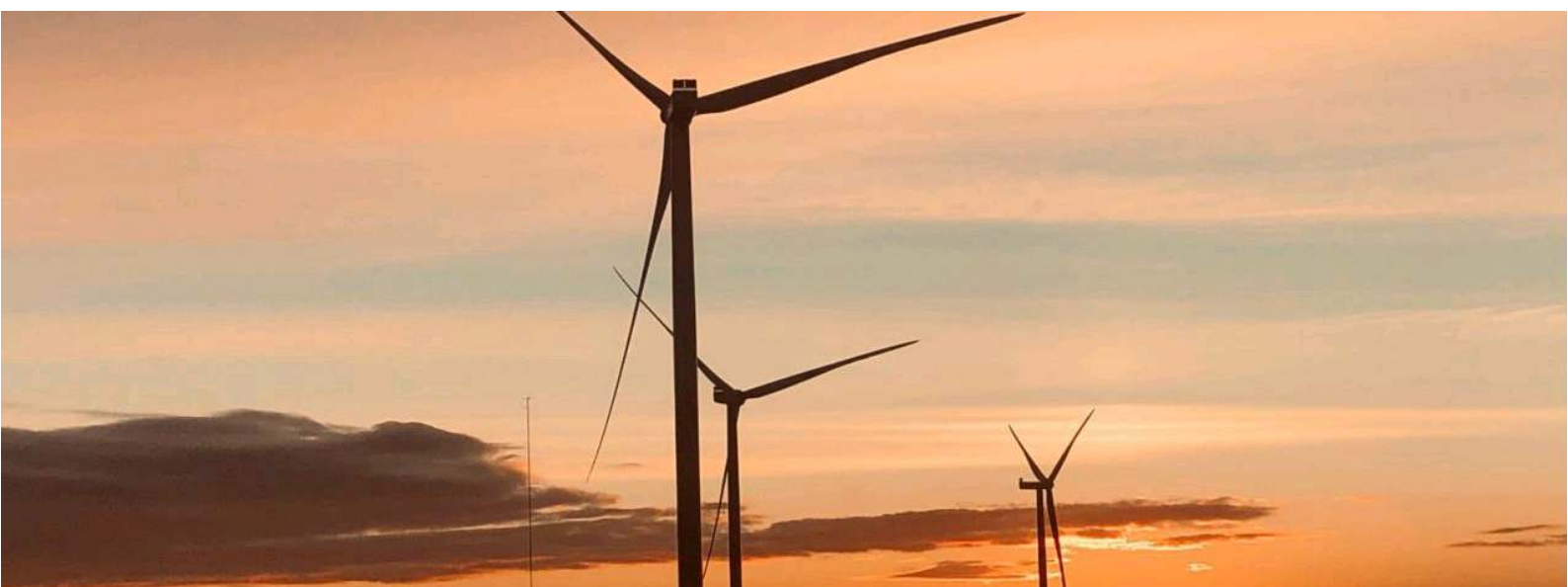
- Bentpath
- Bloch Farm
- Langholm Monument

## Aviation Lighting

We are in discussions with the Civil Aviation Authority (CAA) regarding aviation lighting requirements for our Loganhead Wind Farm proposals.

We will endeavour to limit the number and intensity of lights required on the proposed turbines.

As part of the Landscape and Visual Assessment, a full lighting assessment will be carried out in consultation with relevant consultees, and where appropriate a suitable mitigation strategy will be agreed.





## Environmental Effects

In developing our updated proposals for Loganhead, we have carefully considered the impact on the environment.

An Environmental Impact Assessment Report (EIA-R) will be prepared as part of the Section 36 application to the Scottish Government. The EIA-R will identify the environmental effects that the proposal may have, and specify how any potential effects can be avoided, reduced, mitigated or managed.



### Noise

The EIA will assess construction and operational noise resulting from the proposals, including mechanical noise

produced by internal components and aerodynamic noise produced by the blades. The EIA will also include a cumulative noise assessment to consider the impact of noise from other nearby wind farms in addition to Loganhead.



### Historic environment

The EIA will assess the potential direct, indirect and cumulative impacts on

designated and non-designated historic assets of local, regional and national and international importance from construction, operation and decommissioning. Such assets may include historic settlements and Archaeological Sensitive Areas.



### Shadow flicker

Shadow flicker occurs when turbines cause a flickering effect inside a building where

sunlight passes through a window or door. While shadow flicker should not be a problem due to the distance of the turbines from properties, if any properties were to be located within a 130-degree segment to the turbines then they will require to be assessed for shadow flicker.



### Ecology

The EIA will include an ecological impact assessment which will consider the

potential impacts of the proposals on important ecological features (such as biodiversity sites, important habitats and species, and legally protected and controlled species) during the construction, operation, and decommissioning of Loganhead Wind Farm. The assessment will also identify necessary measures to mitigate ecological impacts.





### Ornithology

The EIA will include an assessment of the impact of the proposals on biodiversity sites

relevant to bird populations, including legally protected species and other notable birds of high nature conservation value. Any necessary mitigation and enhancement measures will also be identified in the assessment.



### Geology, hydrology and hydrogeology

The EIA will include assessment of the effect of the

project on geology, hydrology (including flood risk) and hydrogeology (groundwater). The assessment will also include an assessment of the cumulative impact of the proposals with other wind farm developments, as well as necessary mitigation measures.



### Landscape and Visual

A Landscape and Visual Impact Assessment will be

included in the EIA. This will assess the likely effects of the project on local landscape and visual amenity. It will also include a Night-time Lighting Assessment and a Residential Visual Amenity Assessment.



### Traffic and transport

Potential traffic related environmental effects, such as delays, impacts on pedestrian

journeys, and accidents and safety, will be considered in the EIA. Traffic generated by the proposals during the construction and operational phases will also be identified and assessed.



### Socio-economics, tourism and recreation

The Environmental Impact

Assessment will consider the project's effects on local and national economic, tourism and recreation interests. Benefits and effects on local communities will also be assessed.



### Infrastructure and other issues

The EIA will also assess the impact of the proposals on other

areas, such as infrastructure, telecommunications services, aviation, population and health, sustainable resource use, accidents and disasters, and forestry.



## Meet The Team

Muirhall is proud of our highly-qualified team who place the utmost importance on community involvement, investment and engagement.

The Loganhead team is:



**Jason Morin**  
PROJECT MANAGER



**Mike Molleson**  
SENIOR PROJECT MANAGER



**Mhairi Frain**  
DIRECTOR OF BUSINESS OPERATIONS



**Carol Douglas**  
COMMUNITY LIAISON OFFICER





## Next steps

Thank you for taking the time to participate in the **Loganhead Wind Farm consultation**.

Your feedback is important in shaping our proposals, which we plan to submit to the Scottish Government in Summer 2021.

We will analyse and consider all comments received and will take them into account alongside ongoing design and assessment work. We will then finalise our Environmental Impact Assessment and other technical documents to be included as part of our application.

### Indicative Timetable



### Get in touch with us:



[info@muirhallenergy.co.uk](mailto:info@muirhallenergy.co.uk)



[www.muirhallenergy.co.uk/project/loganhead](http://www.muirhallenergy.co.uk/project/loganhead)

