

ECDIS

Touchscreen navigation



The SEALL ECDIS is one of the first marine software systems to include a multi-touch screen interface, changing the way it's operated and making it one of the simplest ECDIS systems to operate on the market.

- The 24-inch colour display, touch screen and PC are contained within a single panel PC.
- Designed to include only features required by the end-user, to avoid over-complicating the system.
- Easy to use and guarantees a seamless transition from other ECDIS systems or paper navigation.
- Minimise disruption with day to day operation and any downtime.
- Competent and compliant with regulatory requirements in mind to meet the highest safety standards.
- Ideal for compact installations.
- Developed with the end-user in mind.
- Requires a minimal amount of training.
- **FREE** computer-based training application included with printable certification at no cost.

The system automatically detects any sensors that it's connected to and routinely sets up monitoring functions, including motion, AIS, ARPA, positioning and heading devices.

Smart intuitive functionality ensures installing and setting up the SEALL ECDIS is a **FAST** and **SIMPLE** process.

SEALL continues to bring its cutting-edge, innovative product line to the international marine markets, including leisure, workboat, and commercial.

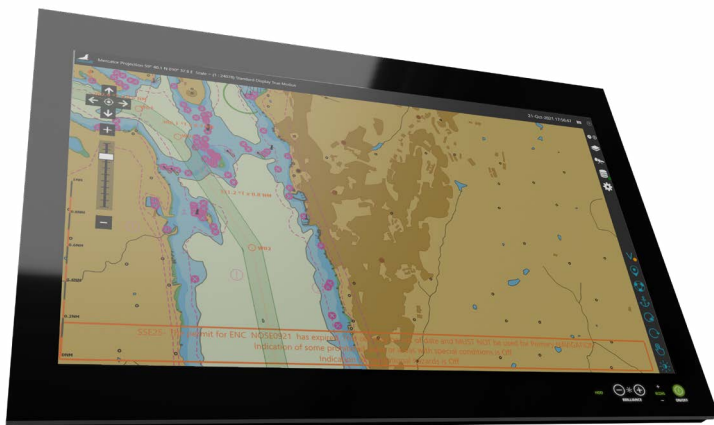
Now powering over
30,000
licensed products globally.

Our smart, user-friendly technology simplifies the way data is displayed, used, and shared, making it more accessible. This makes us the perfect marine technology partner.

Find out more by visiting seallecdis.com

HARDWARE SPECIFICATION:

DISPLAY UNIT:	
Model:	HD 24T22 MMC
Product Dimensions:	593 mm x 384 mm x 73.5 mm (23.4" x 15.1" x 2.9")
Product Weight:	Approx. 10.0kg / 22.0lbs
Package Dimensions:	700 mm x 585 mm x 185 mm (27.7" x 23" x 7.3")
Package Weight:	Approx. 12kg / 26.5lbs
Display:	24.0 inch LED Backlight Technology, Widescreen, RGB vertical stripe, MVA (Multi-domain Vertical Alignment) Technology, TFT Active-matrix
Resolution:	1920 x 1080 (FHD) at 60Hz
Memory:	2 x 4GB (260-pin, DDR4-2133, Dual Channel)
Processor:	1 x Intel® Quad Core™ i7-7700T*, 2.9/3.8GHz, 8MB Cache
Storage:	1 x SSD SATA, Type m.2 (240GB (599TBW))
Software:	SEALL ECDIS
Graphics:	Intel® HD Graphics 630
Connections:	Ethernet GBLan: 5 x RJ-45 COM RS-232 & 422/485: 1 x DB9M non-isolated (RS mode in BIOS) 4 x 422/485 Serial Connections USB2.0 (<5m): 2 x USB Type A (4-pin) USB3.0 (<3m): 2 x USB Type A (9-pin) DP++ 1.2 OUT: 1 x DisplayPort Female (Dual-Mode DP++) AC Power IN: 1 x Std IEC inlet If DC Power IN option: 1 x 2-pin Terminal Block 5.08 (Factory option) If SSD Trays option: 2 x 2.5" Sized Tray/Bay (Factory option)



OPTIONAL ACCESSORIES:

Plinth:	Height: 1174 mm Width: 250mm Weight: 6.5Kg Finish: Anodised
Mounting Feet:	For mounting on Table/Desktop/Ceiling 2 x Fully assembled brackets EN60945 Tested.
External NMEA COM Module:	4 x NMEA RS-422 / RS-485, 4 x 5-pin Terminal Block 3.81 connector: EN60945 Tested.
USB Extension:	Type A plug to Chassis mount Type A receptacle for all Panel Computers and Computers. 1m, UL2725 USB2.0, 28AWG*1P+24AWG*2C+AL+D+B, PVC Jacket, UV Resistant, Black OD=ø5.5mm EN60945 Tested.

DATA:

Input:	Connect to sensors through direct serial connections separately Multiplexed connection down single Serial Multiplexed on a single LAN through bridge network Through external COM module via USB Port Sensors Input: GNS, LOG, GYRO , AIS, ARPA, ECHO SOUNDER
Output:	VDR, BAMS (Bridge Alert Management System). BNWAS (Bridge Navigational Watch Alarm System)





INSTALLATION:

SEALL ECDIS has been type-approved by DNV GL and designed to meet the following standards:

- IEC 61174 (2015)
- IEC 60945 (2002) incl. IEC 60945 Corr.1:2008
- IEC 61162-1 (2016)
- IEC 61162-450 (2018)
- IEC 62288 (2014)
- IEC 62923-1 (2018) and IEC 62923-2 (2018)
- IHO S52 Presentation Library Edition 4.0
- IHO S57 Edition 3.1
- IHO S63 Edition 1.2

TESTING/APPROVED TO STANDARDS:

The hardware has been tested / type-approved by the following classificationsocieties:

- | | |
|-------------------------------------|-----------------------------|
| • Regulations V/18, V/19, V27 & X/3 | • IMO Res. MSC.191(79) |
| • IMO Res. A.694(17) | • IMO Res. MSC.232(82) |
| • IMO Res. MSC.36(63) | • IMO Res. MSC.302(87) |
| • IMO Res. MSC.97(73) | • IMO MSC.1/Circ.1503 Rev.1 |

Installing and setting up the SEALL ECDIS is a fast and simple process. The system automatically detects any sensors that it is connected to including, motion, positioning and heading devices, AIS and ARPA and automatically sets up monitoring functions.