

The only MTP Joint Replacement
System with a successful
20-year clinical history

Unique 3-part Anatomic Great Toe System
incorporating a Sliding and Rotating Meniscus

Primary Device Indications

- OA of the 1st MTP
- Post Trauma
- RA where Hallux Valgus is not prevalent

Typical Problem

Hallux Rigidus: Pain and significantly reduced extension leading to diminished function and lateralisation of foot pressure.

The
Optimal
Solution



ROTOglide™

Great Toe System



Uncemented, non-hinged, surface-replacement arthroplasty, which mimics the normal torque and mobility of the 1st Metatarso-Phalangeal Joint.

3-Part System

- Anatomic Metatarsal
- Standard or Anatomic Mensicus
- Neutral Phalanx

Designed to restore optimal anatomical movement whilst preserving as much primary bone stock as possible.

Bone-interface geometry of the metatarsal and phalangeal is treated with a dual-coating of Plasma-deposited, Commercially-pure, Porus Titanium Powder, crowned with a layer of Hydroxyapatite. This highly Biosympatic layer provides optimum bone-interface to encourage rapid osseointegration.

The articular surfaces of the metal implants have been super-polished to improve wear. Our UHMWPE implants have also been specially treated to enhance tribology.

System is supported by a set of user-friendly instrumentation contained in a single sterilisation tray.

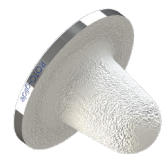
Anatomical Metatarsal



Size	Description	CAT #
X-Small	LEFT	GT5062
X-Small	RIGHT	GT5063
Small	LEFT	GT5036
Small	RIGHT	GT5037
Medium	LEFT	GT5038
Medium	RIGHT	GT5039
Large	LEFT	GT5040
Large	RIGHT	GT5041

Material: Cobalt Chrome with CP Ti and HA Plasma Coating

Neutral Phalanx



Size	CAT #
Small	GT5042
Medium	GT5043
Large	GT5044
X-Large	GT5050

Material: Cobalt Chrome with CP Ti and HA Plasma Coating

Anatomic Mobile Meniscus



Size	Thickness	CAT #
Small	6mm	GT5034
Small	7mm	GT5035
Medium	6mm	GT5026
Medium	7mm	GT5028
Large/XL	6mm	GT5027
Large/XL	7mm	GT5029

Material: UHMWPE Surface treated and packed in nitrogen-enriched pouches

Standard Mobile Meniscus



Size	Thickness	CAT #
Small	6mm	GT5018
Small	7mm	GT5021
Small	8mm	GT5052
Medium	6mm	GT5019
Medium	7mm	GT5022
Medium	8mm	GT5053
Large/XL	6mm	GT5020
Large/XL	7mm	GT5023
Large/XL	8mm	GT5054

Material: UHMWPE Surface treated and packed in nitrogen-enriched pouches

Custom, patient-specific implants are available on a special order basis

INSTRUMENTATION: 1 TRAY SYSTEM | **Medial Approach** # ST 016 / 00 - **Dorsal Approach** MD 168 | **DATE:** 31 AUGUST 2020



71 Jay Avenue, Thornaby-on-Tees
North Riding of Yorkshire TS17 9LZ
United Kingdom

tel: **01642 769080**
email: **info@xtremitysolutions.com**
web: **www.xtremitysolutions.com**

Manufactured in the UK in partnership with Implants International Limited