

An aerial photograph showing a highway under construction in a tropical forest. The road is a wide, light-colored dirt path that curves through the dense green trees. In the foreground, a large area of the road is covered with a dark, textured material, possibly geotextile or gravel. Several yellow construction vehicles, including excavators and bulldozers, are visible on the dirt path. The background shows rolling hills and more forest under a hazy sky.

Humans Habitats and Highways

Coalition 3H
Heart of Borneo
22nd March 2019

Environmental NGOs form Coalition 3H

Borneo Post 5/5/18 pg 13

KOTA KINABALU: Civil society organisations aimed at social and environmental justice as well as research missions have formed the Coalition 3H.

Coalition 3H comprises the Borneo Sun Bear Conservation Centre (BSKCC), Borneo Tropical Forest Office Field Centre (BTFC), Forever Sabah Jaringan Orang Asli Se-Malaysia (JOAS), Land Empowerment Animals People (LEAP), PACOS Trust and WWF Malaysia.

The formation of the Coalition was aimed at providing a platform for civil society, academia and the public to engage proactively in road and infrastructure development planning and processes through science, information access, online dialogue, community workshops, forums and site expeditions.

Malaysia, alongside Indonesia and Papua New Guinea, are planning some of the most intensive road and infrastructure expansion in the tropical world over the next two decades. Sabah and Sarawak will see their share of this, including the highly promoted Pan Borneo Highway. Roads, highways and bridges can be beneficial pathways to progress, equality and prosperity. However, they can also be harmful tools of destruction impacting the integrity of landscapes, cultures and ecosystems.

The Coalition has a how they are planned, habitat destruction and open decision-making processes, relevant research studies and assessments, and collaborative engagement between public, private and civil society sectors can make this difference and help find ways forward that optimise benefits and limit risks.

Coalition 3H is partnering with both local and international research institutions, namely Universiti Malaysia Sabah and James Cook University's (JCU) Centre for Tropical Environmental and Sustainability Science. The first focus will be on a Strategic Collaborative Assessment of the Pan Borneo Highway.

The Coalition has also been engaging with an interdisciplinary design, engineering and construction fields as well as the appropriate government agencies and local government bodies.

In the groundwork, meetings and workshops across the regions were held and courtesy calls were made to government agencies such as the Department of Tourism and Regional Planning (Dept. Tourism, the State



Cynthia Ong



Dr. Dinesh



Dr. Benoit Goossens



Anne Lanning

Minister of Tourism, Culture and Environment.

Cynthia Ong, Executive Chairperson of LEAP and lead facilitator of the Coalition states,

"We represent meet with the Chief Minister, the Minister of Infrastructure Development and KE since last year and were not able to meet, inform and get feedback from them.

It is important to us as a civil society to interface with the key government bodies in an open and professional manner."

Meanwhile, Dr. Dinesh, Director of WWF Malaysia said, "We want to shift our approach by engaging and channeling our resources as early as possible in the planning process, and harnessing the collective contributions of our partners' interdisciplinary & sustainable landscape, particularly in areas highlighted as 'Environmentally Sensitive' in the Sabah Strategic Plan 2021."

Coalition 3H partners Anne Lanning, Executive Director of PACOS Trust and Beverly Jones, Secretariat Director of JOAS observed, "We are not acknowledging the efforts of the builders of the Pan Borneo Highway to inform the public and communicate progress,

we also track the benefits and activities funded by some indigenous peoples and local community and groups. The Coalition will bring useful status, research findings and community organisations to help bridge gaps and promote information access."

Several activities have been planned for the year ahead, focusing on various stretches and particular segments of the Pan Borneo Highway. These will be shared widely via scientific journals, social media, print and online media, workshops and forums.

They will also conduct monitoring as well as local, national, regional and international policies and laws.

Dr. Benoit Goossens, Director of BTFC and Reader at Cardiff University and Dr. Marc Ancorshaz, Coordinator of Borneo Futures observed, saying, "There is extensive data from decades of research by many local and international road planners, including on wildlife, habitats, forests, hydrology, mining, fisheries, agriculture and socio-economics."

"We need a coalition to strengthen and channel the planning and decision-making processes for road and infrastructure development."

New NGO group to assess Pan Borneo

KOTA KINABALU: Non-government organisations with social and environmental justice as well as research missions have formed Coalition 3H across Malaysia (JHE). The aim is to provide a platform for civil society, academia and the public to engage proactively in road and infrastructure development planning and processes, through science, information access, online dialogue, community workshops, forums and site expeditions, according to a statement received.

Coalition 3H comprises Borneo Sun Bear Conservation Centre (BSKCC), Borneo Tropical Forest Office Field Centre (BTFC), Forever Sabah, Jaringan Orang Asli Se-Malaysia (JOAS), Land Empowerment Animals People (LEAP), PACOS Trust and WWF Malaysia.

It said, Malaysia along with Indonesia and Papua New Guinea, is planning some of the most intensive road and infrastructure expansion in the tropical world over the next two decades. Sabah and Sarawak will see their share of this, including the highly promoted Pan Borneo Highway.

Roads, highways and bridges can be beneficial pathways to progress, equality and prosperity. They can also be harmful tools of destruction impacting the integrity of landscapes, cultures and ecosystems. The difference lies in how they are planned. Robust discussions and open decision-making processes, relevant research studies and assessments, and collaborative engagement between public, private and civil society sectors can make this difference and help find ways forward that optimise benefits and limit

risks, it said.

Coalition 3H is partnering with both local and international research institutions, namely Universiti Malaysia Sabah and James Cook University's (JCU) Centre for Tropical Environmental and Sustainability Science. The first focus will be on a Strategic Collaborative Assessment of the Pan Borneo Highway.

The Coalition is also engaging with professionals in the design, engineering and construction fields as well as the appropriate government agencies and local government bodies.

To lay the groundwork, multiple well-attended meetings and workshops across the sectors were held, and courtesy calls were made to government agencies such as the Environment Protection Department, Town and Regional Planning Department, the Sabah Forestry Department, the State Economic Planning Unit and the Ministry of Tourism, Culture and Environment.

Cynthia Ong, Executive Chairperson of LEAP and lead facilitator of the Coalition said, "We requested to meet with the Chief Minister, the Minister of Infrastructure Development and JCR since last year and were not able to meet, inform and get feedback from them. This is important to us as it is our intention to interface with the key government bodies in an open and professional manner."

"We want to shift our approach by organizing and channeling our concerns as early as possible in the planning process, and harnessing the collective contributions of our partners towards achieving a sustainable landscape, particularly in

areas designated as 'Environmentally Sensitive' in the Sabah Strategic Plan 2021," commented Dats' Dr. Dinesh Sharma of WWF Malaysia.

Coalition 3H partners Anne Lanning, Executive Director of PACOS Trust and Beverly Jones, Secretariat Director of JOAS observed, "We are not acknowledging the efforts made by the proponents and the builders of the Pan Borneo Highway to inform the public and communicate progress; we also track the concerns and criticism raised by some indigenous peoples and local communities and groups. The Coalition will bring useful studies, research findings and community consultations to help bridge gaps and promote informed discourse."

Several activities are planned for the year ahead, focusing on various stretches and particular alignments of the Pan Borneo Highway. These will be shared widely via scientific journals, social media, print and online media, workshops and forums. They will also conduct monitoring as well as local, national, regional and international policies and laws.

Dr. Benoit Goossens, Director of BTFC and Reader at Cardiff University and Dr. Marc Ancorshaz, Coordinator of Borneo Futures said, "There is extensive data from decades of research by many local and international institutions, including on wildlife, habitats, forests, hydrology, geology, fisheries, agriculture, and socio-economics. We want to contribute this to strengthen and open up the planning and decision-making processes for road and infrastructure development."

Formation of 3H Coalition

Conservationists urge more viaducts, tunnels to safeguard wildlife

By Sylvia Looi
The Malay Mail Online 28 December 2017
themalaymailonline.com

8. Losing endangered animals on the road

At least 39 threatened animals were recorded as roadkills in Malaysia between January and September this year, while a sun bear and a tapir were both killed on Christmas eve after collisions with cars.



JUNE 21, 2017

A Baby Elephant is Killed on a Highway in Perak

Share this:



ENVIRONMENT



A group of elephants walking across a field near Perak Zoo. WP

Malaysia's beleaguered wild elephants face a variety of daily dangers. They may be poached for their body parts. They may be poisoned by slash-and-burn agriculture or shot to keep them off their properties. And there's always the risk of road accidents.

A young elephant calf has just suffered that fate in Gerik. The two-year-old juvenile was found dead, lying in a pool of blood, by the side of the Gerik-Jeli Highway in Gerik, in Perak state. The juvenile packyders had likely been killed by a vehicle when it was trying to cross the road.

Such incidents involving elephants are relatively rare in Malaysia, but numerous wild animals fall victim to vehicular accidents regularly, from deer to leopards.

The stretch of highway where the young calf was killed has long been highlighted by conservationists as a dangerous spot for wild elephants. Located near the Rupa-Rupa-Sungai Suddi Park and Tamengpan Forest Reserve in the area often wander around the highway, especially in early morning and late at night when visibility is low as they forage for food. Wild elephants tend to cover large distances in search of a variety of plants on the roads they need to cross to get from one part of the forest to another.

The young elephant was found by members of the Malaysian conservationist group Management and Ecology of Malaysian Elephants (MEME). "We are devastated to see a baby elephant killed by a car at Gerik-Jeli highway," Alice Sotaha Reina, a field manager and elephant tracker for MEME, wrote in a Facebook post, which displayed images of the dead calf taken at the site.



Latest tapir killed by van pushes roadkill of iconic species to over 70

NEWS

Friday, 29 Dec 2017

7:40 PM MYT



By Rashidjeet S. Bhat



A tapir was killed by a van in a forested area near Segamat, Johor.

PETALING JAYA A tapir was killed by a van in a forested area near Segamat, Johor on Saturday (June 21).

04 | NEWS WITHOUT BORDERS
Issue ON MONDAY | 27 FEBRUARY 2017

No action against bus driver who hit elephant

No criminal element, says police chief

By P. CHANDU SAGARAN
www.themalaymailonline.com

PERAK Police and the Wildlife Department will not press charges against the driver of a bus that ran over and killed a two-year-old male elephant at Kuala of the Gerik-Jeli road last night.

Gerik district police chief Sgt Ismail Chah said the accident was unintentional and there was no case to pursue.

"Elephants and other wild animals roam freely in the area and such incidents do happen," he said. "The Wildlife and National Parks Department officers Wan Noharudin Wan Noharudin said there was no criminal element and the number of the bus at the time of the accident had to be taken into account.



The male elephant was killed and left on the road.

accumulation in the bags and a broken leg.

As for prosecutive measures, he said, "a total of 10 elephants of wild animals meeting, including elephants had been crushed along the road."

"Apart from the remaining signs, the department provides guidelines to the motorists to be more careful when driving through the area. It is written in Bahasa Malaysia for all passing motorists to be careful and take necessary precautions to avoid any accident incidents."



Signboards warning motorists of elephants crossing at Kuala of the Gerik-Jeli road.

Upgrade to four lanes dual carriageway on existing alignment

Four lanes dual carriageway on new alignment / bypass

New coastal road

Existing road

Phase 1

Sindumin - Tanjung Simpang Mengayau
Ranau - M32 (Sandakan) - Lahad Datu -
Tawau

Phase 2

Tamparuli - Ranau

Phase 3

Kimanis - Keningau
- Kalabakan - Tawau



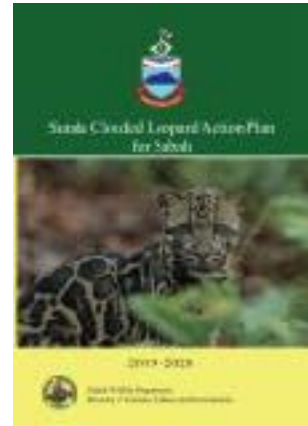
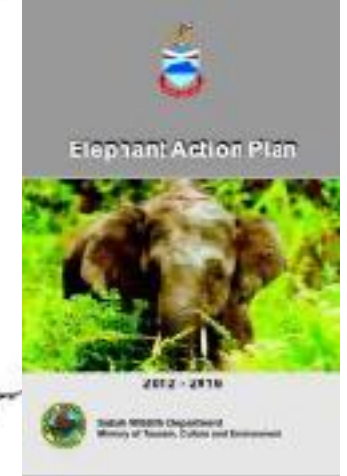
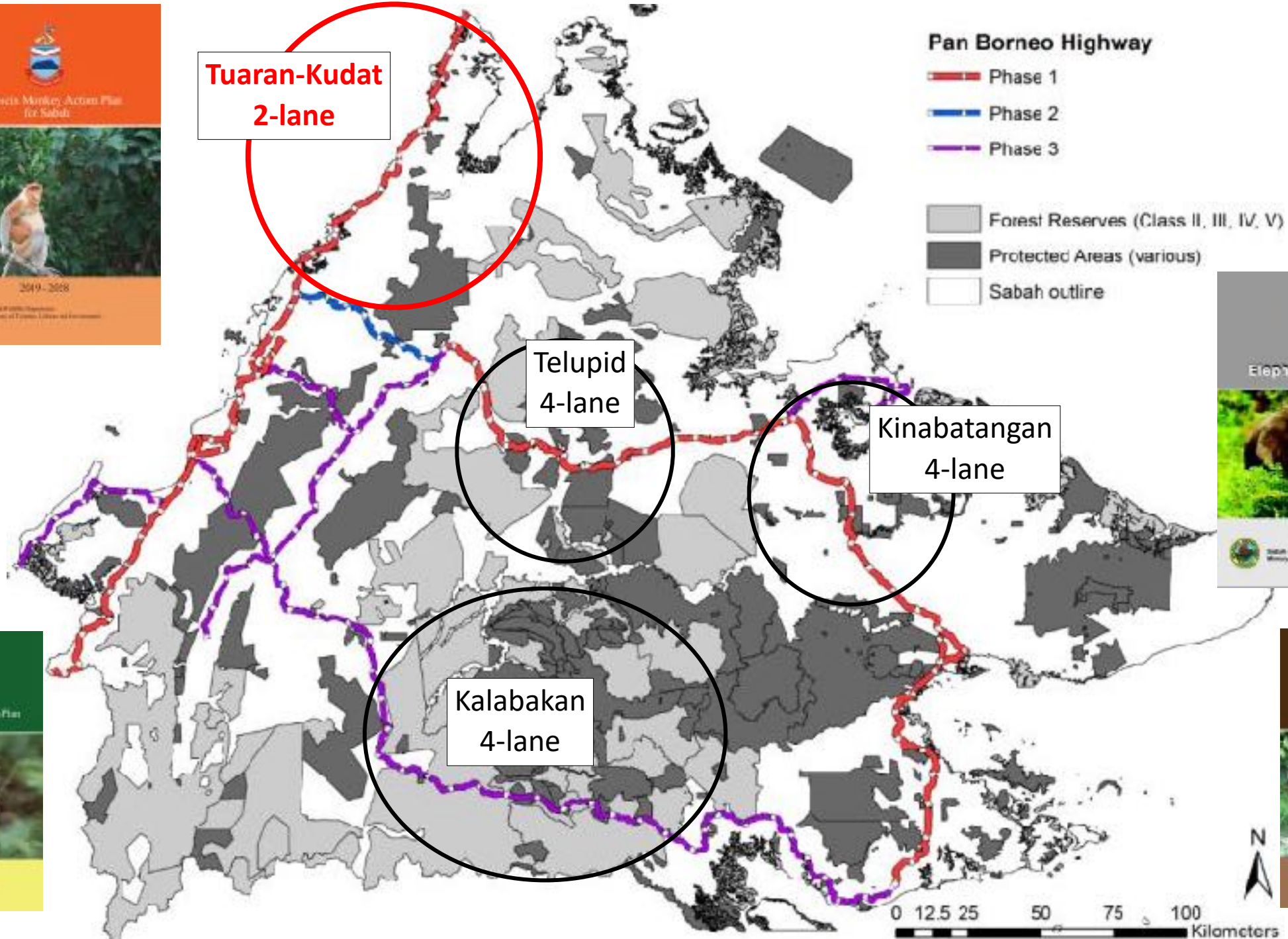


Tuaran-Kudat
2-lane

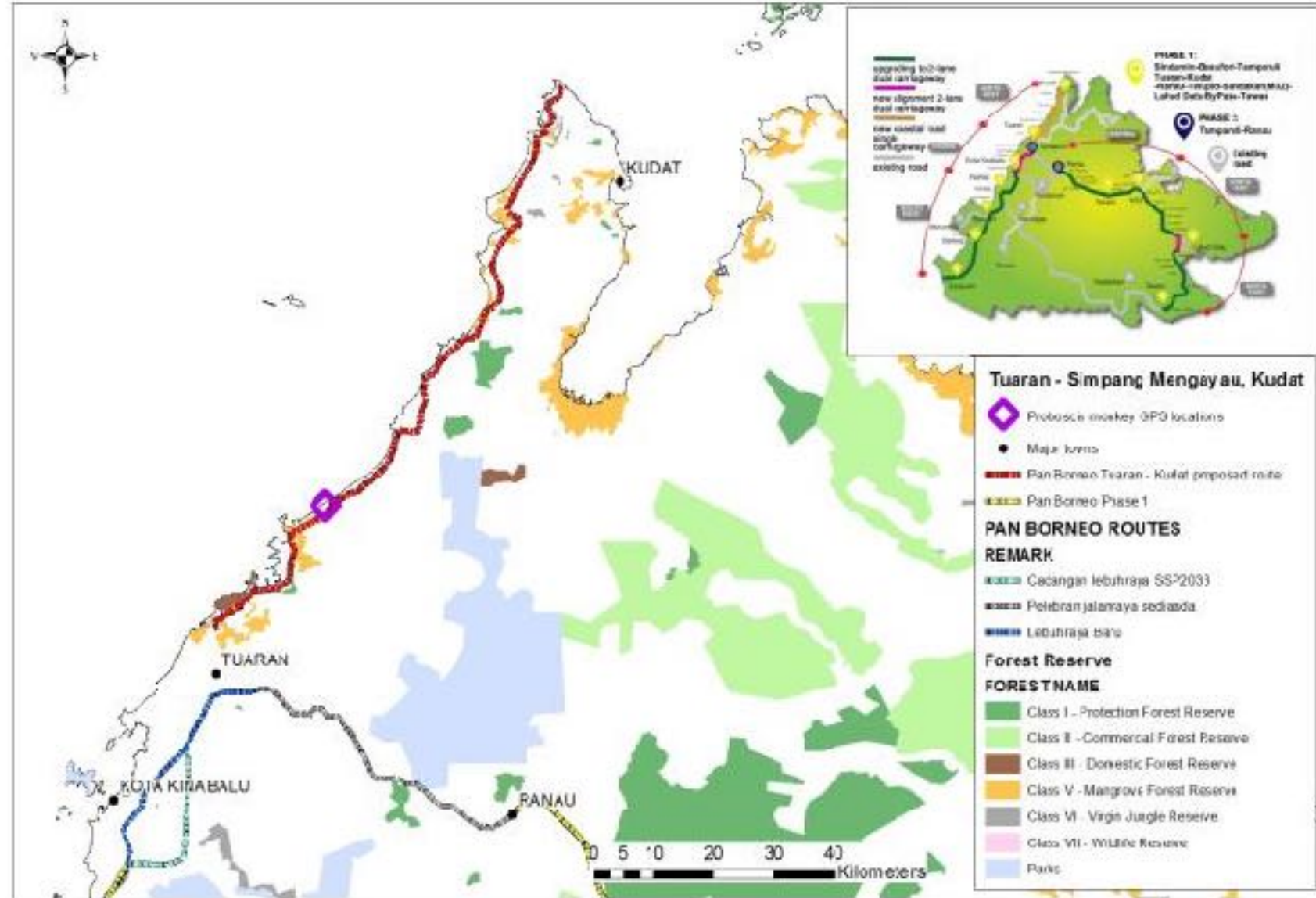
Pan Borneo Highway

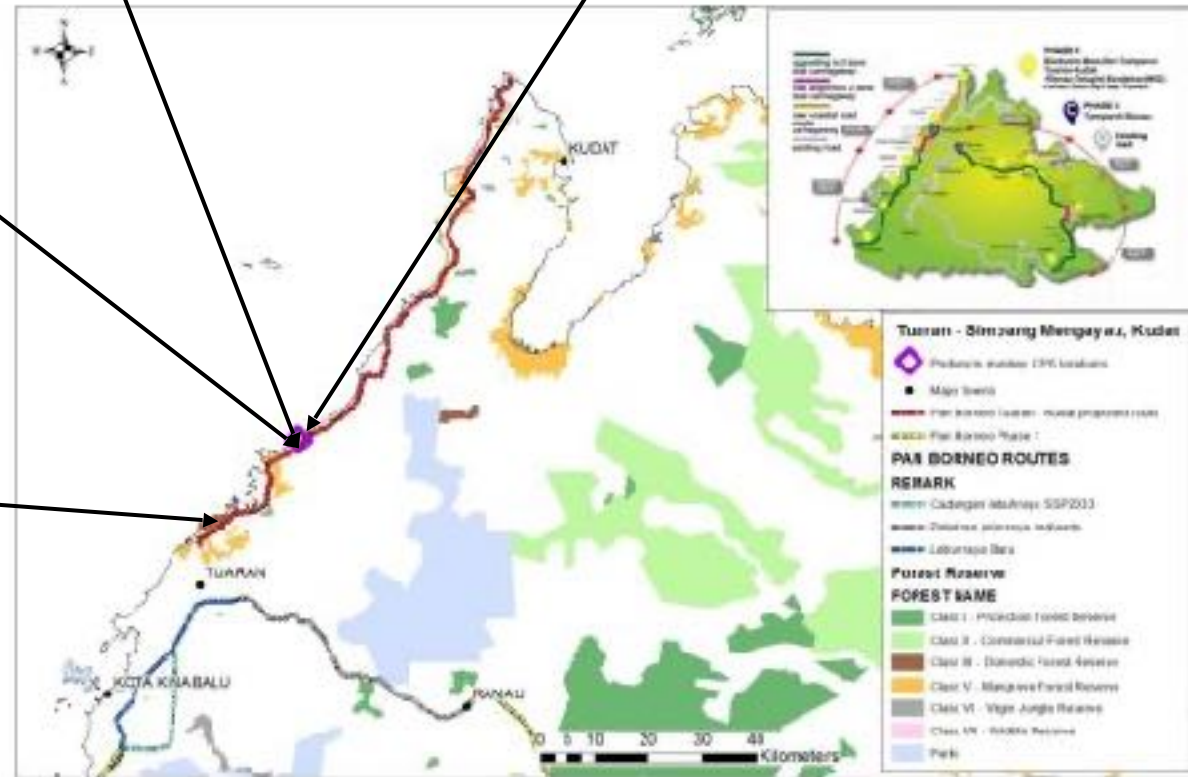
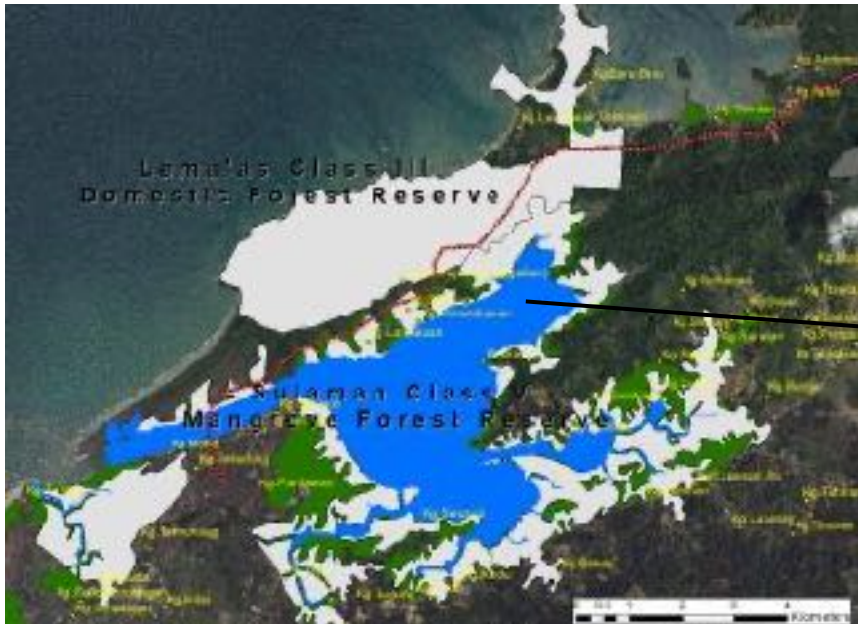
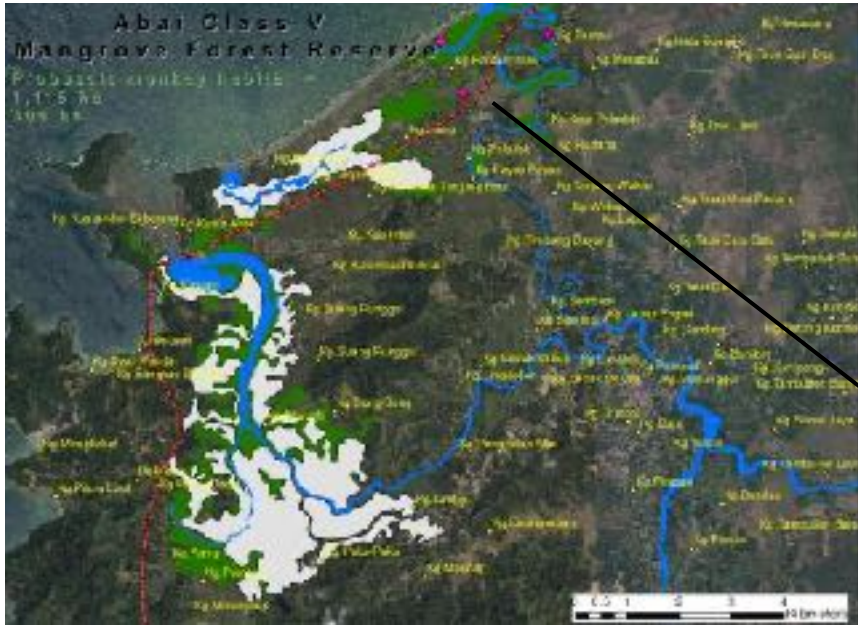
- Phase 1
- Phase 2
- Phase 3

- Forest Reserves (Class II, III, IV, V)
- Protected Areas (various)
- Sabah outline



Tuaran-Kudat (2-lane coast road)





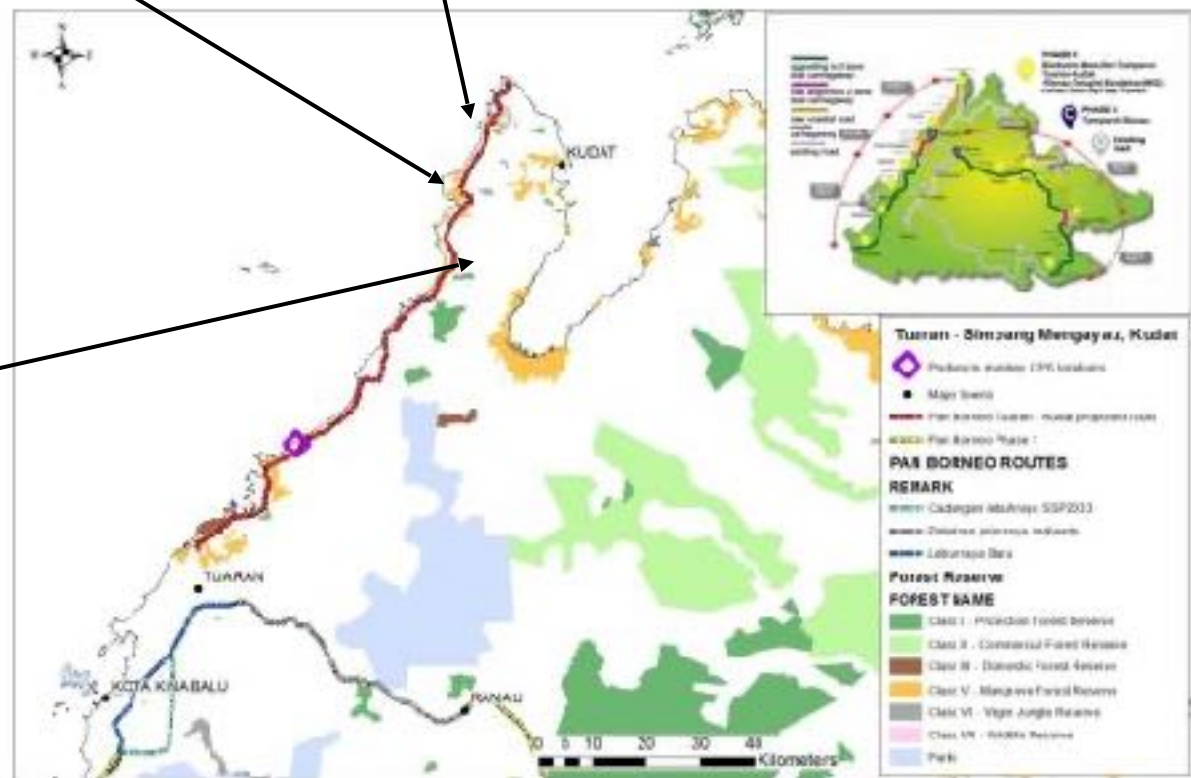
Kudat & Marudu Class V Mangrove Forest Reserve



Kudat & Marudu Class V Mangrove Forest Reserve



Kudat & Marudu Class V Mangrove Forest Reserve



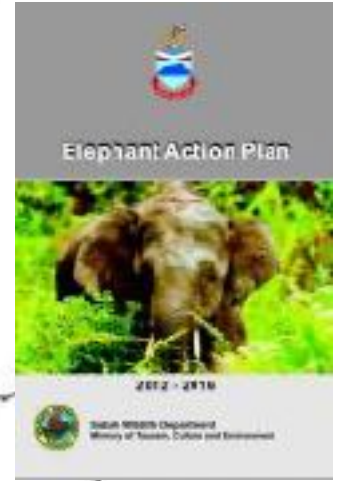
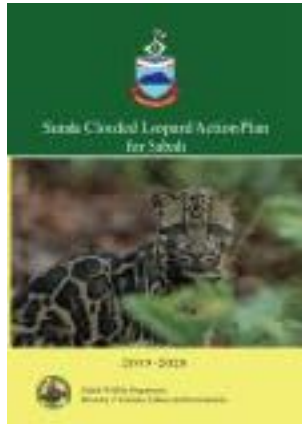


Tuaran-Kudat
2-lane

Telupid
4-lane

Kinabatangan
4-lane

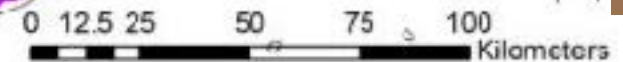
Kalabakan
4-lane



Pan Borneo Highway

- Phase 1
- Phase 2
- Phase 3

- Forest Reserves (Class II, III, IV, V)
- Protected Areas (various)
- Sabah outline



Potential mitigation option

Forested wildlife viaducts in strategic locations





Tuaran-Kudat
2-lane

Telupid
4-lane

Kinabatangan
4-lane

Tawau-Kalabakan
4-lane

Pan Borneo Highway

Phase 1

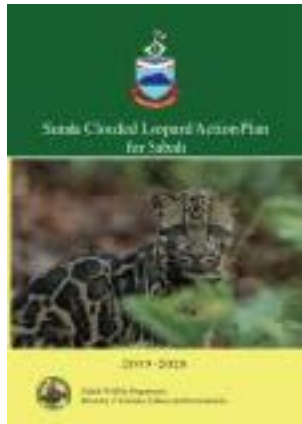
Phase 2

Phase 3

Forest Reserves (Class II, III, IV, V)

Protected Areas (various)

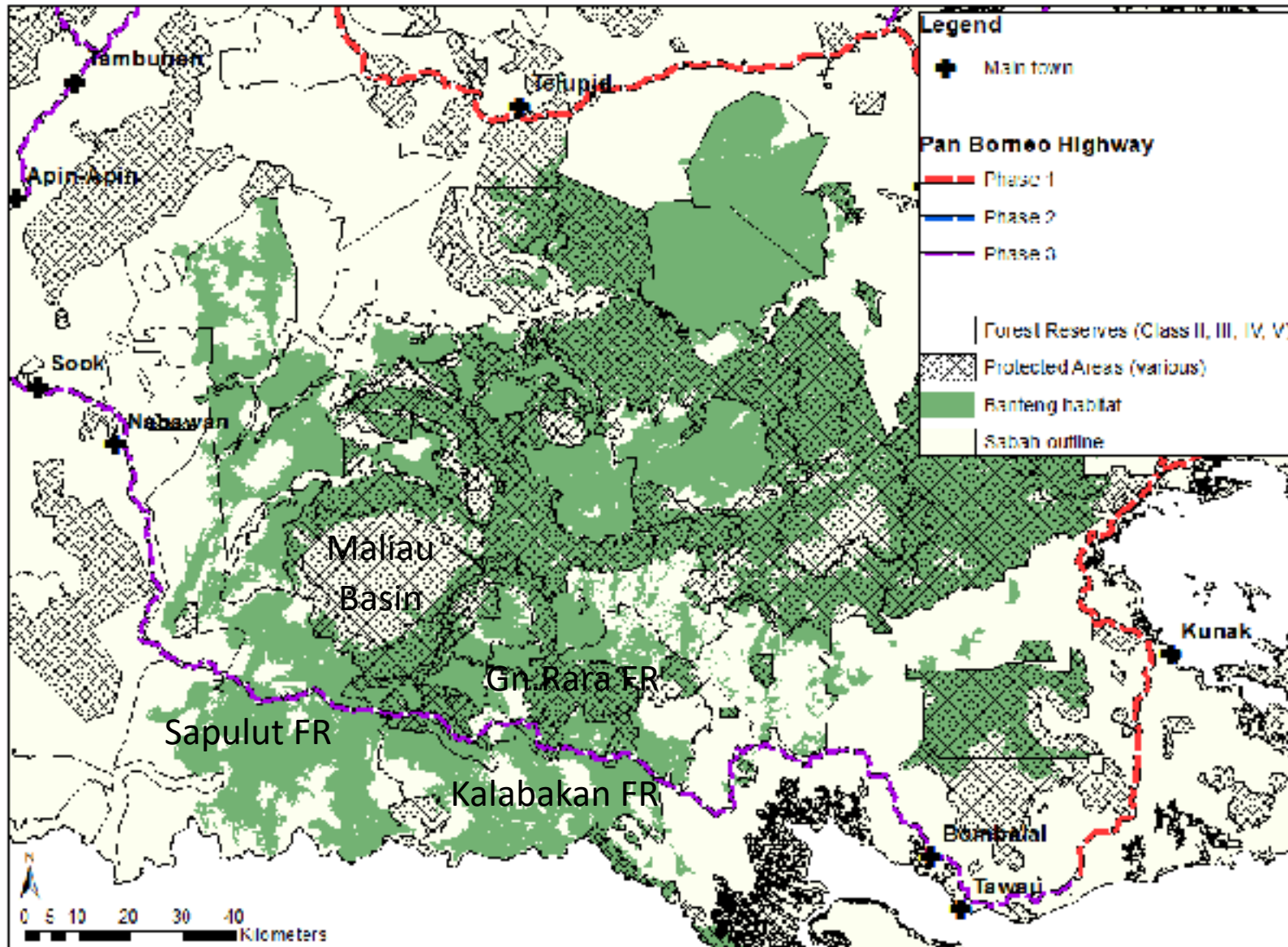
Sabah outline



0 12.5 25 50 75 100 Kilometers



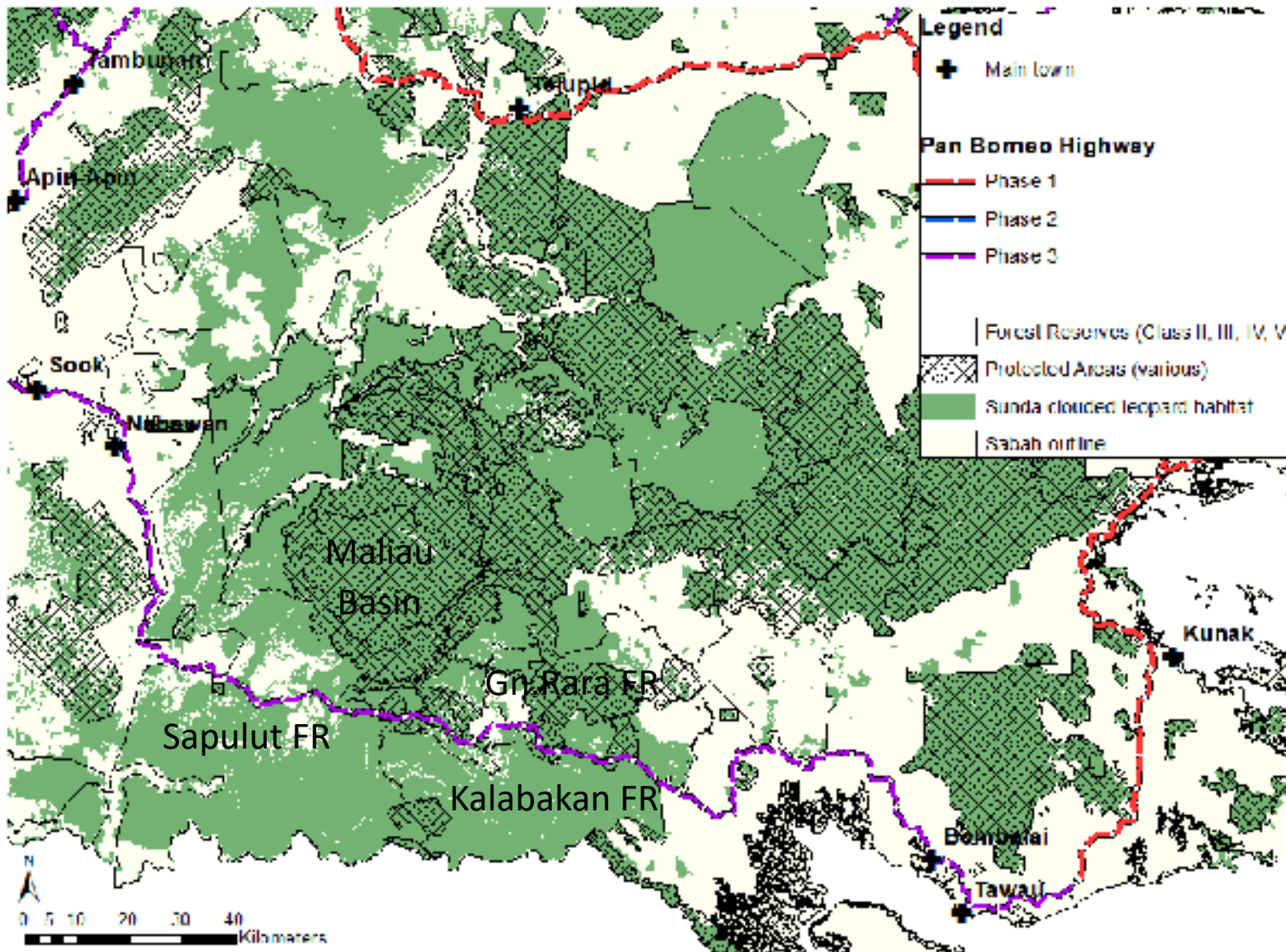
PBH and Banteng distribution



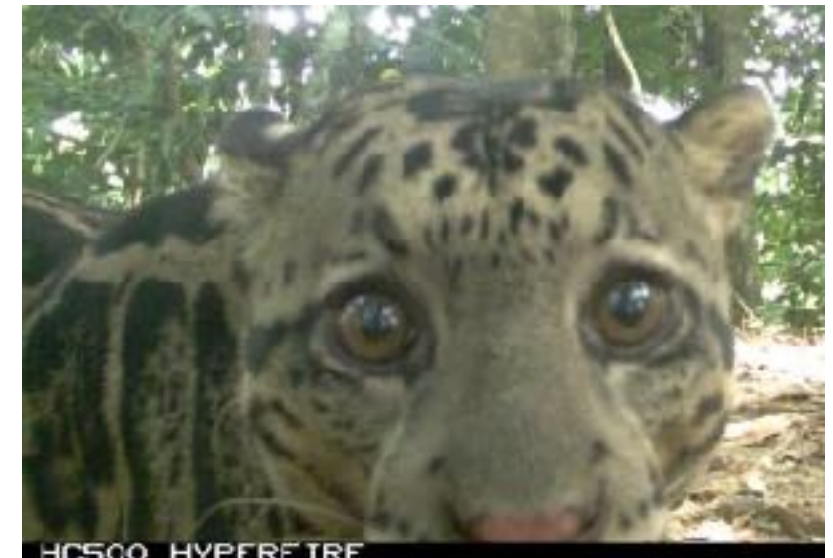
Bornean banteng:
Schedule 1 species
Endangered (IUCN Red List)
Banteng Action Plan
Minimum of 326 individuals in Sabah



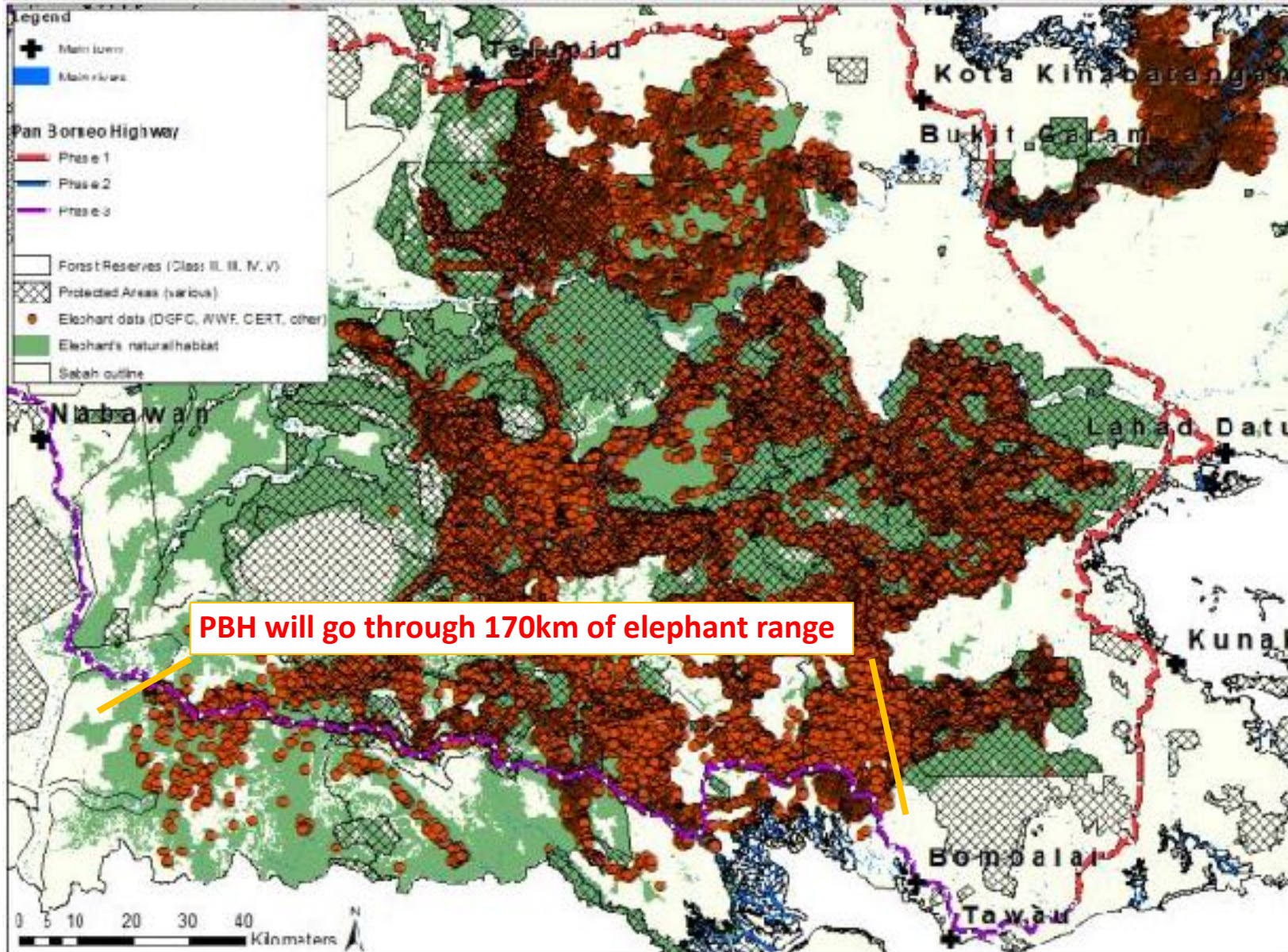
PBH and the Sunda clouded leopard distribution



Clouded leopard:
Schedule 1 species
Vulnerable (IUCN Red List)
Clouded Leopard Action Plan
Approx. 750 individuals in Sabah



PBH and elephant distribution



Asian elephant:

Schedule 1 species

Endangered (IUCN Red List)

Elephant Action Plan

1,500-2,000 individuals in Sabah

High collision risk areas:

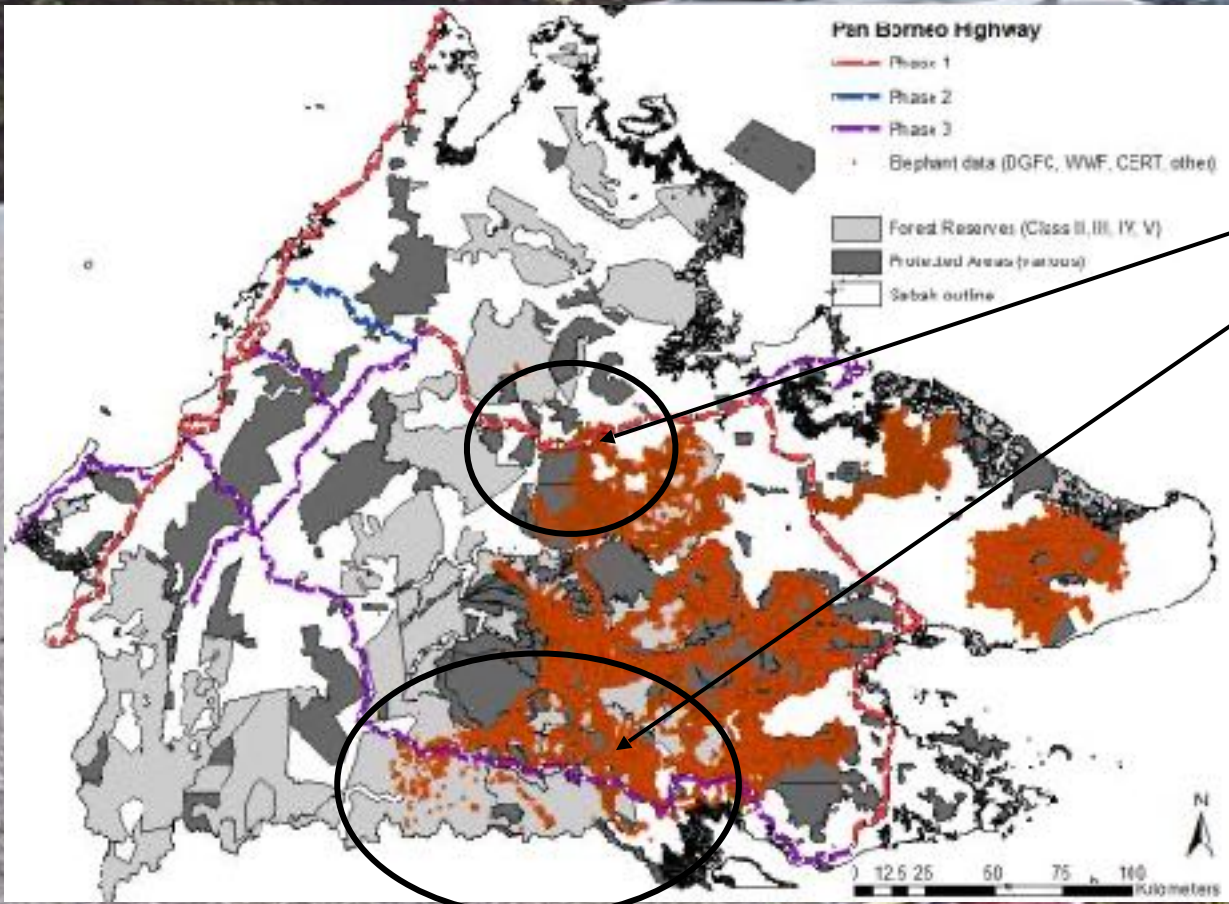
25km Telupid

170km from south-west Ulu Kalumpang FR through GnRara, Kalabakan and Sapulut Forest Reserves



PBH and elephant distribution

High risk areas of major collisions with elephants





Tuaran-Kudat
2-lane

Telupid
4-lane

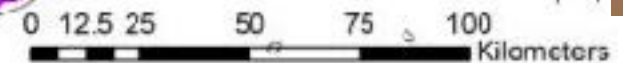
Kinabatangan
4-lane

Kalabakan
4-lane

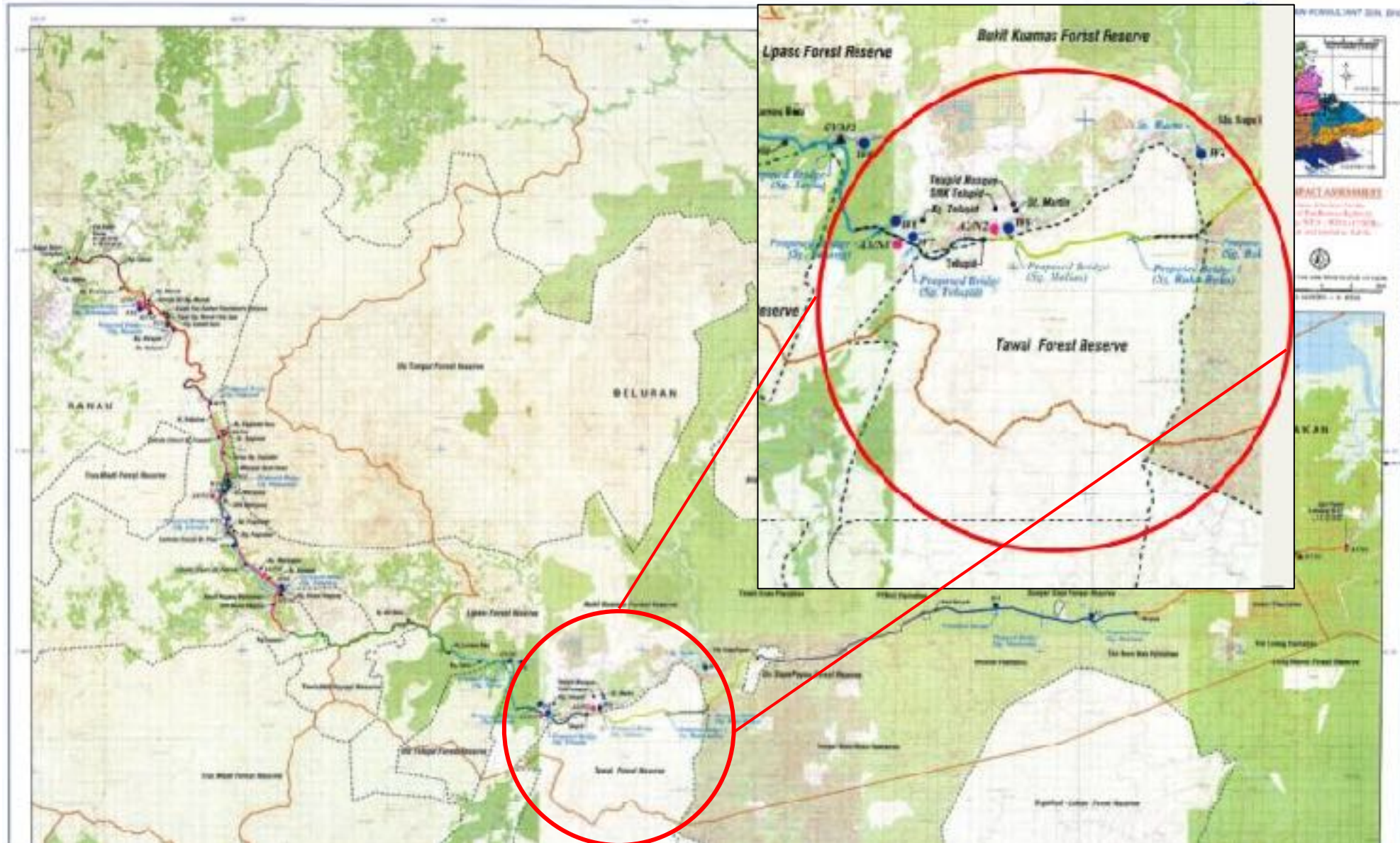
Pan Borneo Highway

- Phase 1
- Phase 2
- Phase 3

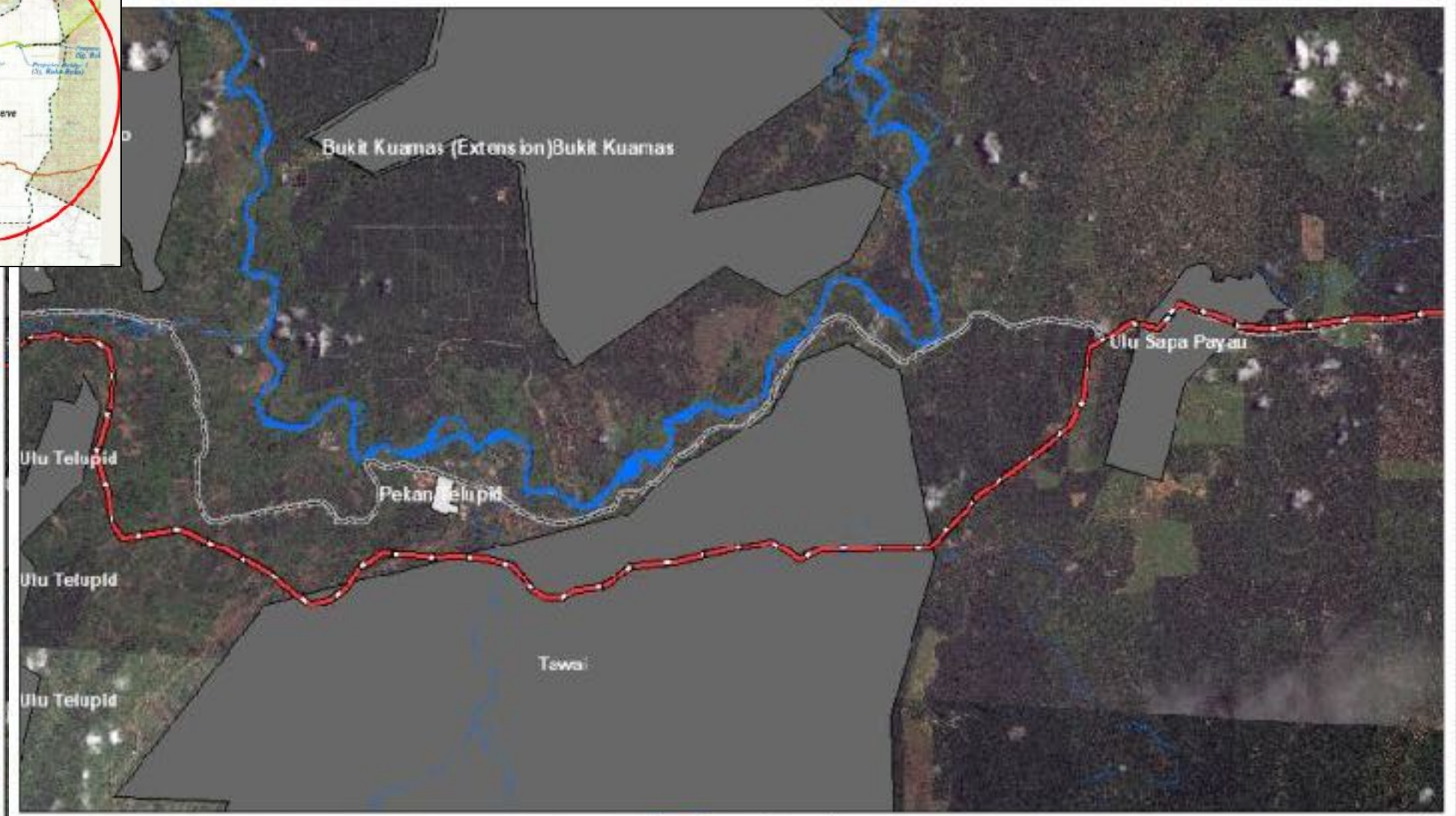
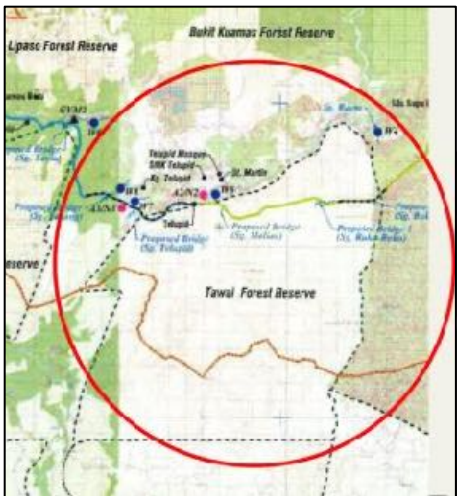
- Forest Reserves (Class II, III, IV, V)
- Protected Areas (various)
- Sabah outline



Ranau-Sandakan (Telupid)



Pan Borneo Highway alignment (red line)



— Current Pan Borneo Highway alignment (as per the EIA document)
— Existing road

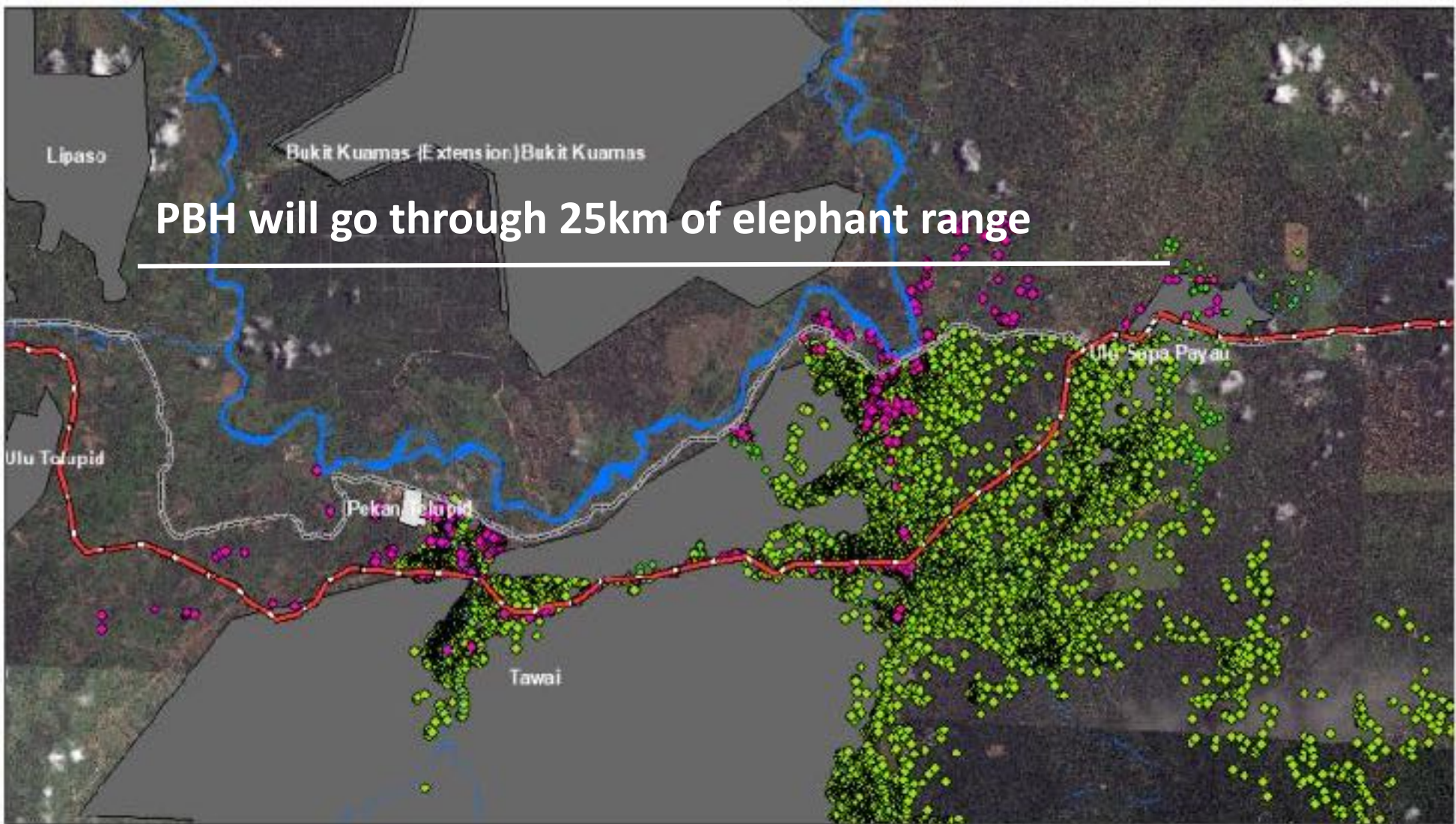
— Rivers

— Forest Reserves (FRs - Class II, III, IV, V)

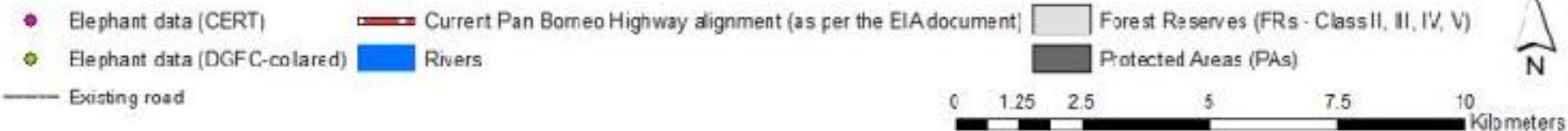
— Protected Areas (PAs)



Elephant data from CERT (ground) and DGFC (collar)



PBH will go through 25km of elephant range






Potential mitigation option


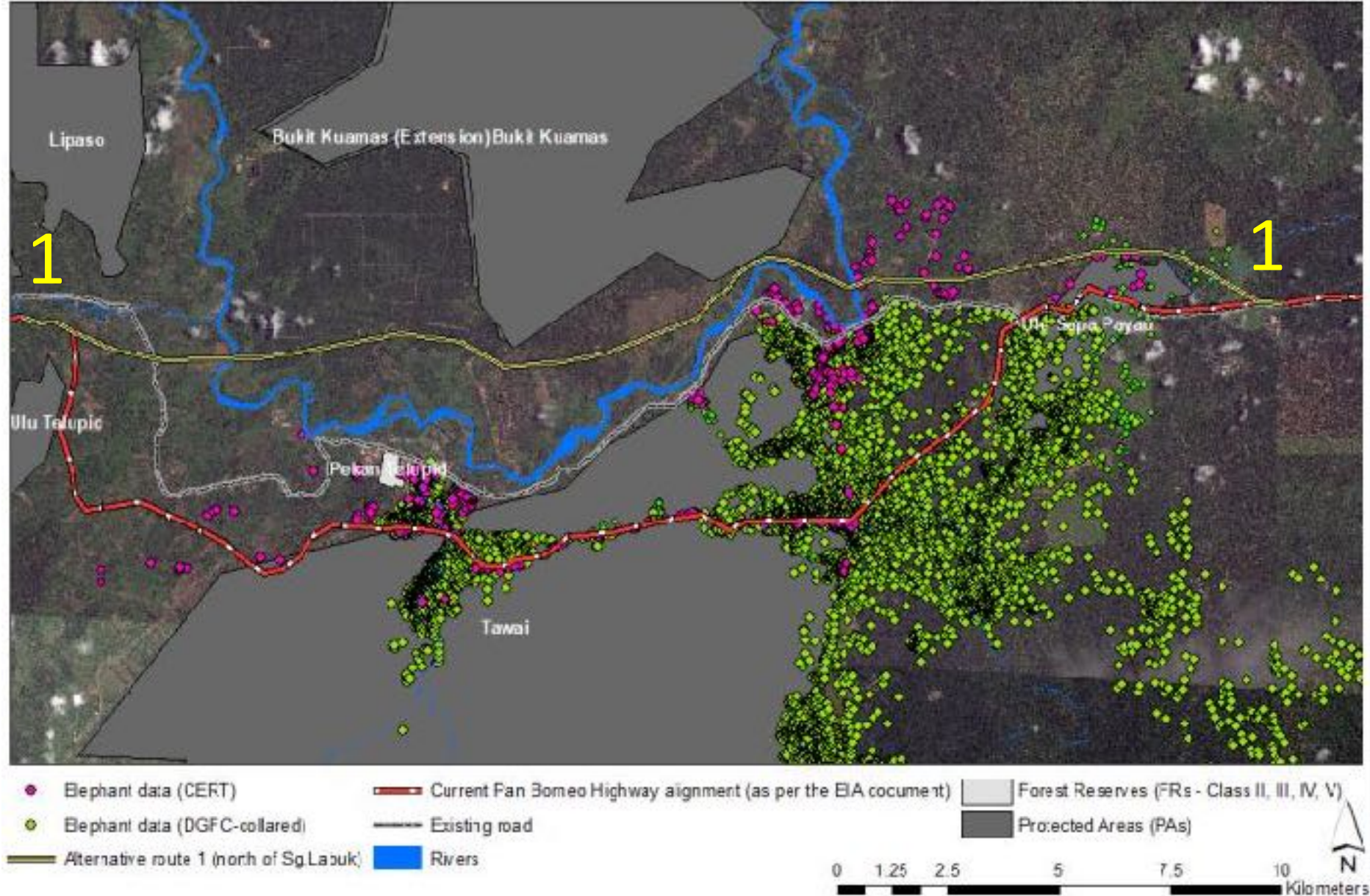
Date: 17 November 2018

Recommendations for mitigating human-wildlife impacts along the Pan Borneo Highway in the Talapud Forest Reserve Complex
This report pertains to WP18/WP15



Construction of the Pan Borneo Highway in Sabah cutting through forest

This report is prepared by the following organizations:



Alignments

- Alternative (north of Sg Labuk)
- Alternative (bypass KgBauto and Kg Gambaron)

- Current Pan Borneo Highway alignment (as per the FIA document)
- Existing road
- Rivers
- Elephant data (CERT)
- Elephant data (DGFC-collared)
- Forest Reserves (FRs - Class II, III, IV, V)
- Protected Areas (PAs)







© ForeverSabah





Warning: Disturbing content!

