

Public Meeting

**Interstate 229 Exit 6 (10th Street) Interchange and
Mainline Interstate 229**

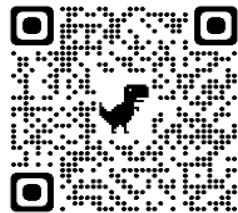
PL0194(98)P; PCN 07P7

Interchange Study, Environmental Study, and Design

Phil Gundvaldson, PE

Public Involvement Coordinator

Tuesday, March 12, 2024 at 5:30 PM



**SCAN HERE TO ACCESS THE STUDY
WEBSITE AND PROVIDE COMMENTS!**



Phil Gundvaldson



Purpose of the Meeting

Team

- Introductions and Contact Info

Project Limits / Schedule

- Study Area

Alternatives Evaluated and Recommended Alternatives

- I-229
- Interchange and 10th Street

Traffic Analysis

- I-229
- Interchange and 10th Street

Environmental Screening Report

- I-229
- Interchange

Gather Input and Comments

- <https://www.i229Exit6.com/>



Phil Gundvaldson



Project Team



CONFLUENCE



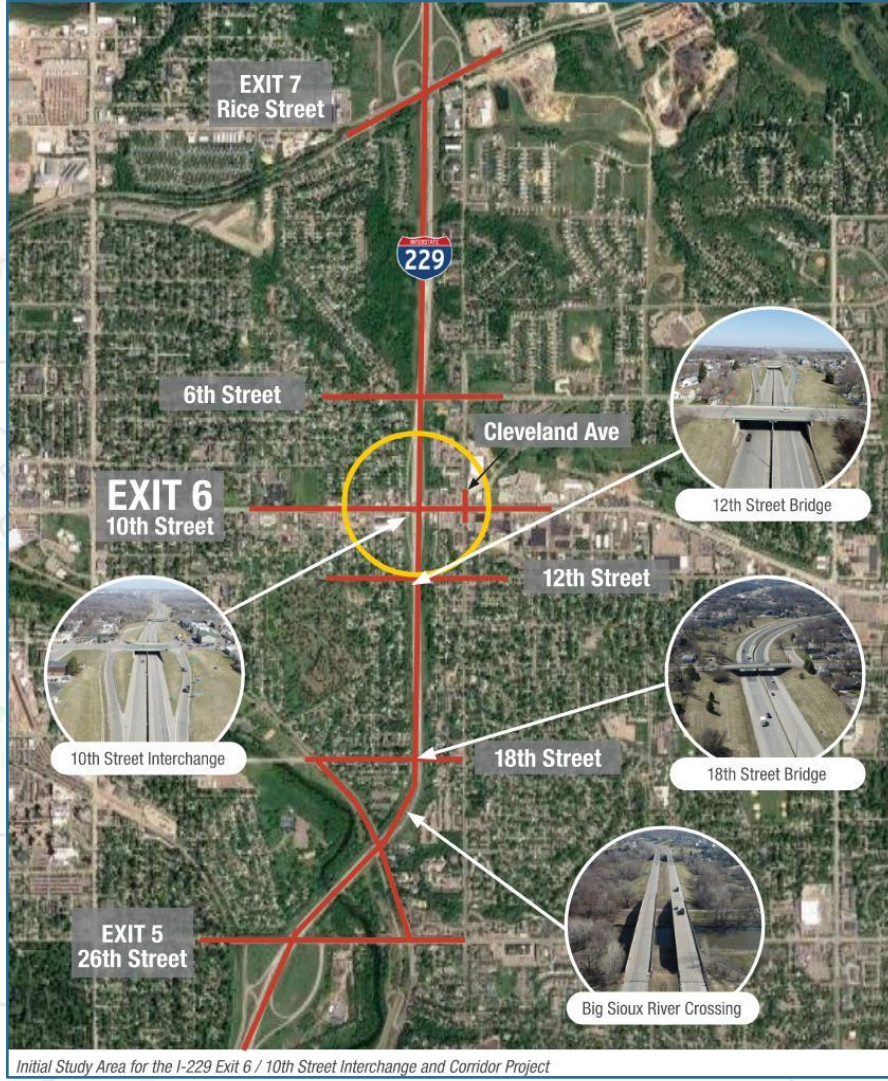
infr▲structure



Phil Gundvaldson



Project Limits






I-229 Exit 6 (10th Street) Interchange and Mainline I-229



Phil Sandvaldson



Tentative Project Schedule

TASKS	2020				2021				2022				2023				2024			
TASK 1: PLANNING STUDY																				
TASK 2: ENVIRONMENTAL STUDY																				
TASK 3: TOPOGRAPHIC SURVEY																				
TASK 4: UTILITY COORDINATION AND LOCATING																				

Dependent on Phasing and Funding



Phil Gundvaldson

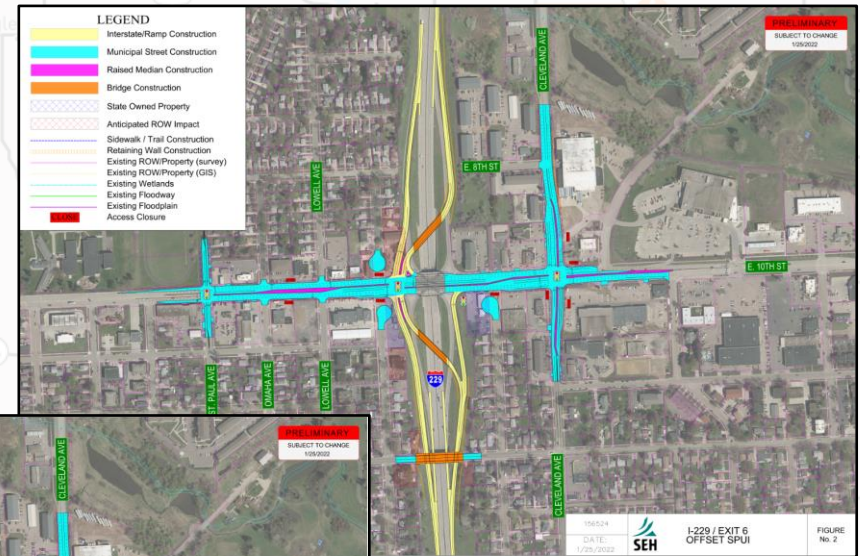
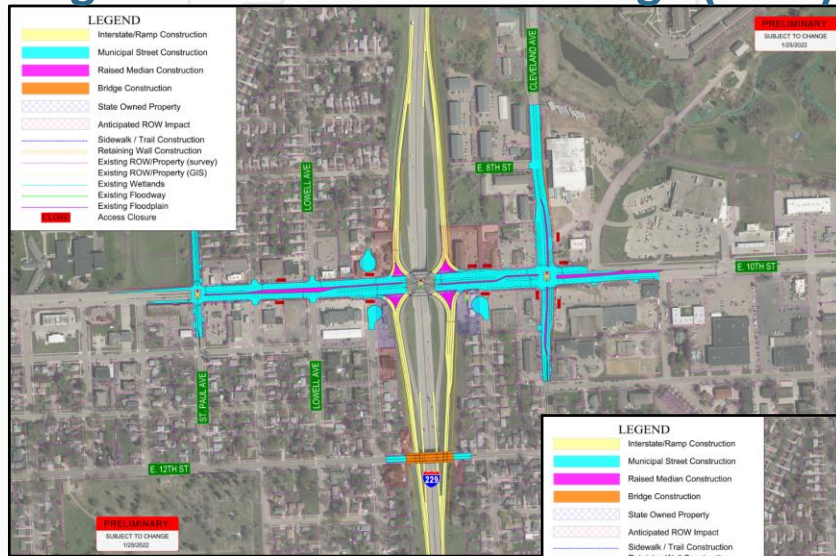


Study Alternatives – 10th St. Interchange



Single Point Urban Interchange (SPUI)

Offset SPUI



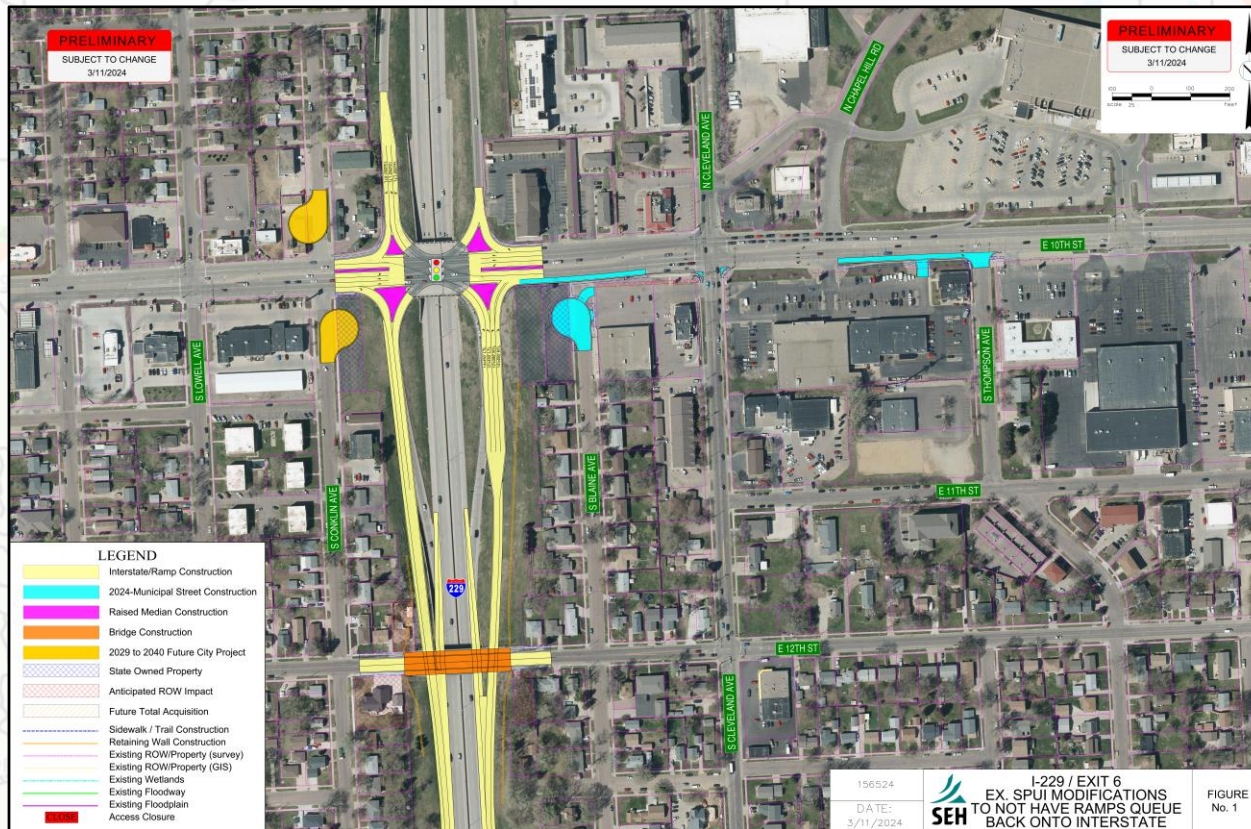
Diverging Diamond Interchange (DDI)





Recommended Alternative – 10th Street Interchange

Single Point Urban Interchange (with ramp improvements)



Study Alternatives – I-229 Mainline



Implement curve improvements

No curve improvements

Widen inside shoulder

No widening to inside shoulder

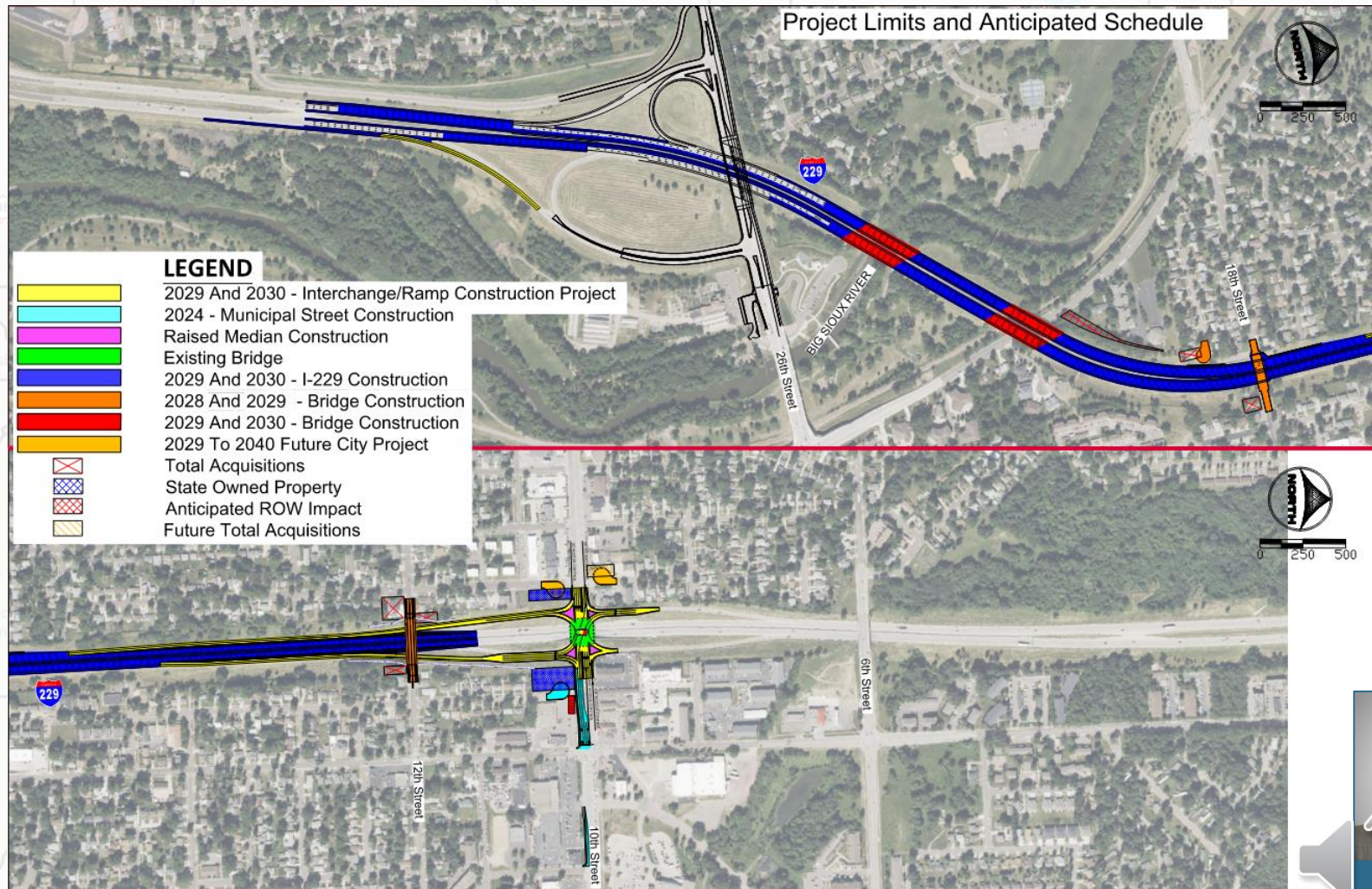


Ben White



Recommended Alternative I-229

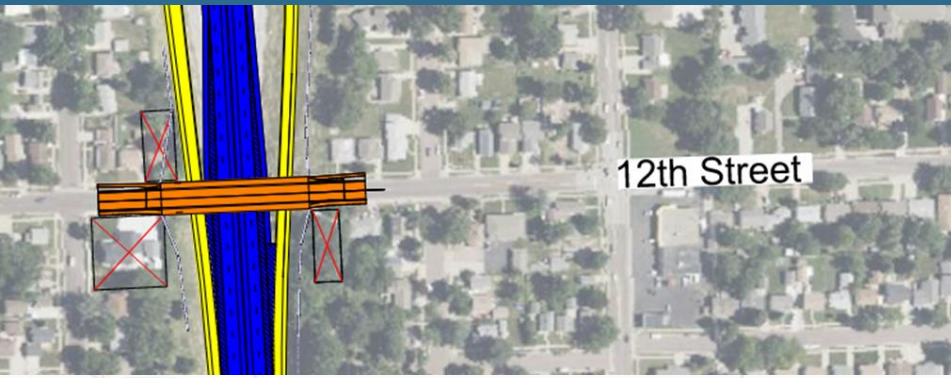
Add travel lanes, implement curve improvements, and widen inside shoulders



Ben White



Pedestrian Impacts



I-229 Pedestrian & Bicycle Crossings

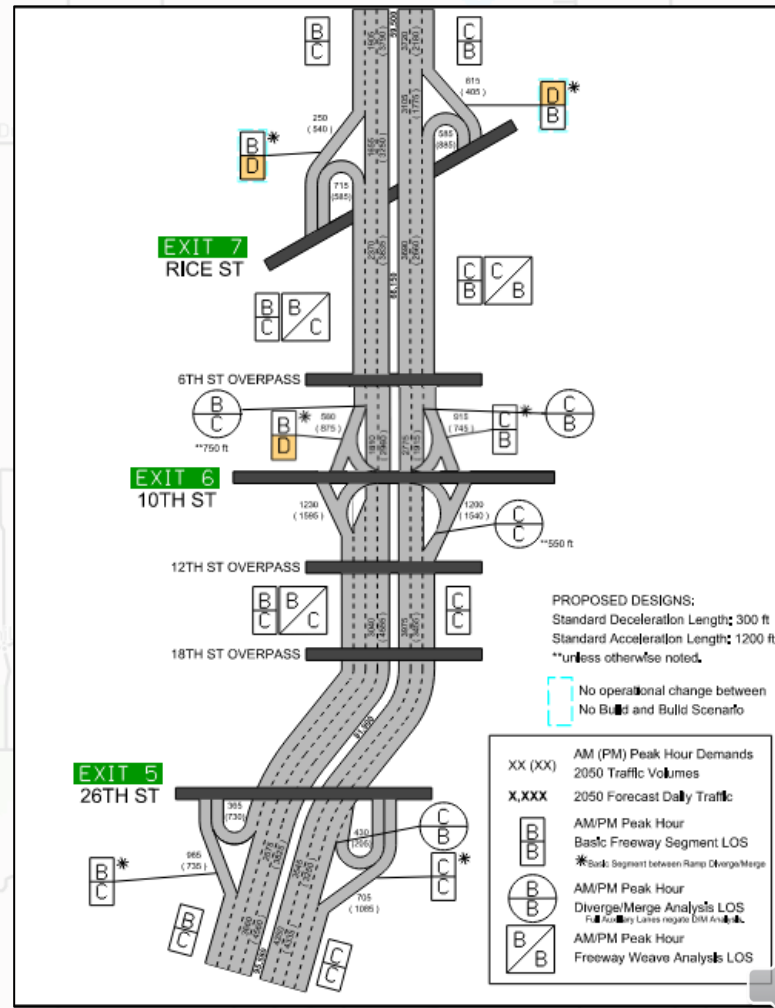
- East 12th Street & East 18th Street bridge crossings are planned to be reconstructed and pedestrian accommodations implemented
- No changes to existing crossings at E. 6th Street or Southeastern Avenue
- No changes to existing trail system along the Big Sioux River
- No changes to existing pedestrian facilities on E 10th Street



Chad Kucker

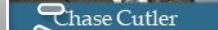


No Build



No operational change between
No Build and Build Scenario

XX (XX)	AM (PM) Peak Hour Demands
2050	Traffic Volumes
X,XXX	2050 Forecast Daily Traffic
	AM/PM Peak Hour
	Basic Freeway Segment LOS
	* Basic Segment between Ramp Diverge/Merge
	AM/PM Peak Hour
	Diverge/Merge Analysis LOS
	Fully Accessible Lanes require AM/PM Analysis
	AM/PM Peak Hour
	Freeway Weave Analysis LOS



Traffic Analysis - Interchange

No Build

Vehicle Queues

NB Ramp: 1,325'

SB Ramp: 1,430'

Major Roadway	Intersecting Roadway	Control Type	AM Peak Hour					PM Peak Hour				
			Approach				INT.	Approach				INT.
			EB	WB	NB	SB		EB	WB	NB	SB	
Rice Street	I-229 SB Ramp Terminal	Signal	B*	B	NA	E	C*	C*	C	NA	D*	C*
Rice Street	I-229 NB Ramp Terminal	Signal	F	F	F*	E*	F	F	D	F*	F*	F
10 th Street	Jessica Avenue	Signal	A	A	C	NA	A	B	A	D	NA	B
10 th Street	Lowell Avenue	Signal	A	B	E	E	B	D	C*	D	F	D*
10 th Street	Conklin Avenue	RI/RO			D	D	D			F	C	F
10 th Street	I-229 SPUI	Signal	F	D	F	D	F	E	D	D	F	E-
10 th Street	Blaine Avenue	RI/RO			C	NA	C			E	NA	E
10 th Street	Cleveland Avenue	Signal	D*	F	F*	F	F	B*	F	F*	F*	F
10 th Street	Hy-Vee Entrance	Signal	A*	B	E	F	B*	A*	B	E*	E*	B*
26 th Street	I-229 SB Ramp Terminal	Signal	B	A	B	NA	B	C	A	B	NA	B
26 th Street	I-229 NB Ramp Terminal	Signal	C	B	B	NA	B	B	A	F	NA	E-

Build

Vehicle Queues

NB Ramp: 625'

SB Ramp: 570'

Major Roadway	Intersecting Roadway	Control Type	AM Peak Hour					PM Peak Hour				
			Approach				INT.	Approach				INT.
			EB	WB	NB	SB		EB	WB	NB	SB	
Rice Street	I-229 SB Ramp Terminal	Signal	B*	B	NA	E	C*	C*	C	NA	D*	C*
Rice Street	I-229 NB Ramp Terminal	Signal	F	F	F*	E*	F	F	D	F*	F*	F
10 th Street	Jessica Avenue	Signal	A	A	E*	NA	A*	A	A	F*	NA	A*
10 th Street	Lowell Avenue	Signal	A	A	D	E	B	E	D	D	F	E
10 th Street	Conklin Avenue	RI/RO			D	D	D			F	C	F
10 th Street	I-229 SPUI	Signal	C	B	D*	E	C	C	B*	D*	F*	D*
10 th Street	Blaine Avenue	-										
10 th Street	Cleveland Avenue	Signal	D*	F	F*	F	F*	D*	F	F*	F*	F*
10 th Street	Hy-Vee Entrance	Signal	A*	B	E	E	B*	A*	B	E*	E*	B*
26 th Street	I-229 SB Ramp Terminal	Signal	B	A	B	NA	B	C	A	B	NA	B
26 th Street	I-229 NB Ramp Terminal	Signal	C	B	B	NA	B	B	A	F	NA	E-



Chase Cutler



Safety Analysis - Mainline

Facility Type	Crash Type	No Build	Build
Freeway Segment	Fatal/Injury	168	144
	Property Only	369	280
Speed Change Areas	Fatal/Injury	42	60
	Property Only	102	136
ALTERNATIVE TOTALS	Fatal/Injury	210	204
	Property Only	471	416
	TOTAL	681	620
	% Reduction	-	9.00%



Chase Cutler



Safety Analysis – Interchange

Facility Type	Crash Type	No Build	Build SPUI
Arterial Corridor & Intersections	Fatal/Injury	403	385
	Property Only	692	667
Ramp Connections	Fatal/Injury	32	41
	Property Only	30	42
ALTERNATIVE TOTALS	Fatal/Injury	436	426
	Property Only	722	709
	TOTAL	1,158	1,135
	% Reduction	-	2.1%



Chase Cutler



Environmental, Social and Economic Concerns



This project is being developed in accordance with applicable State and Federal environmental regulations.



National Environmental Policy Act of 1969 (NEPA), as amended. Coordination has been initiated with State & Federal resource agencies.



Stacy Woodson



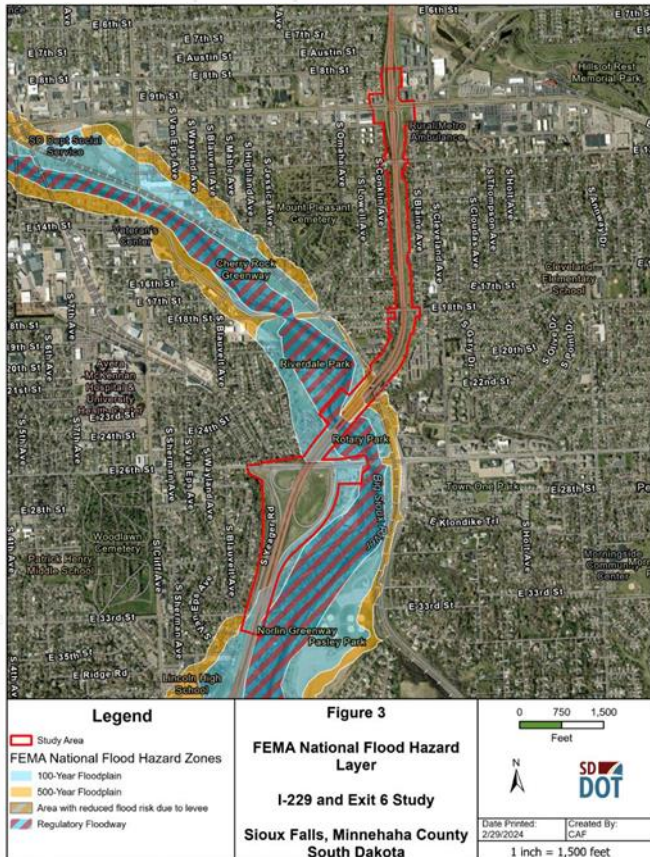
Environmental, Social and Economic Concerns

Environmental Screening Report

- Evaluate resources
- Help early design decisions
- Guide future NEPA documentation



Stacy Woodson



Environmental, Social and Economic Concerns

Notable Identified Resources

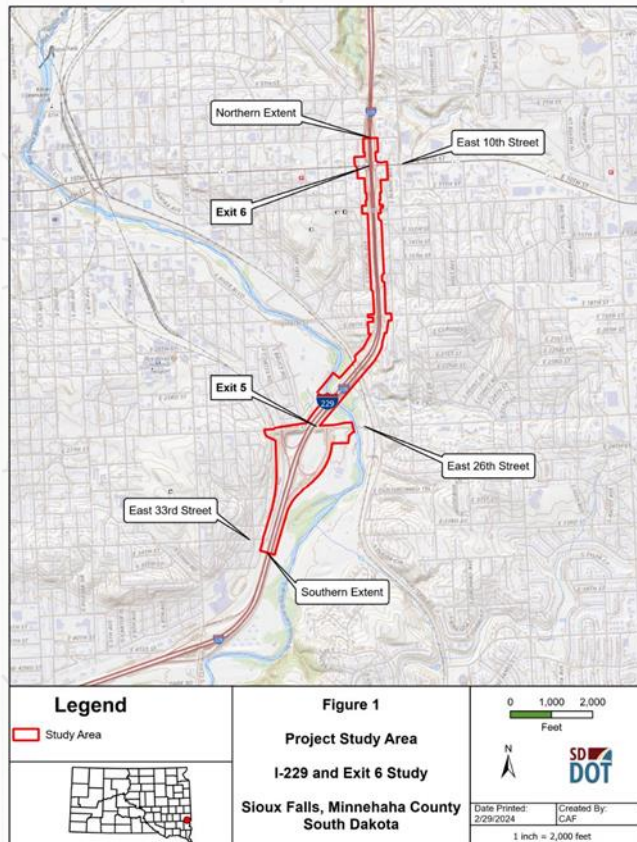
- Big Sioux River and wetlands
- Cultural and historic resources
- Potentially contaminated properties
- State and local parks and trail networks
- Right of way and property acquisitions
- Additional noise evaluations



Stacy Woodson



Environmental, Social and Economic Concerns



Future NEPA Documentation

- Guide alternative selection and design
- Determine NEPA documentation type
- Identify state and federal agency permit coordination needs






Stacy Woodson



Tentative Project Schedule

Dependent on Phasing and Funding

Study Phase Schedule:

TASKS	2020				2021				2022				2023				2024			
TASK 1: PLANNING STUDY																				
TASK 2: ENVIRONMENTAL STUDY																				
TASK 3: TOPOGRAPHIC SURVEY																				
TASK 4: UTILITY COORDINATION AND LOCATING																				

Construction Schedule:

2024 – Municipal Street Construction

2028 & 2029 – 12th St. & 18th St. Bridge Construction

2029 & 2030 – I-229 Construction

2029 & 2030 – Interchange/Ramp Construction

2030 – 2040 – Future Municipal Street Construction



Phil Gundvaldson

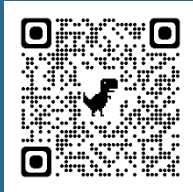


Public Input

Submit Questions and/or Comments:

by:

**Friday, April 19,
2024**



to:

Phil Gundvaldson, PE
InfrastructureDG
116 W. 69th St.,
Suite 200
Sioux Falls, SD 57108
PhilG@InfrastructureDG.com

Public meeting and additional contact information can
be found at: <https://www.i229exit6.com/>

