

5Z36



 MADE IN ITALY 

PLACING BOOM:
OPENING SYSTEM "Z"

PUMPING UNIT:
UP TO 158 m³/h

TOTAL WEIGHT:
< 26 t (57320 lb)

ASSEMBLY ON VEHICLE 3 AXLES:
**WB 3,900 – 4,200 mm
(12'9" - 13'9")**

TECHNICAL CHARACTERISTICS



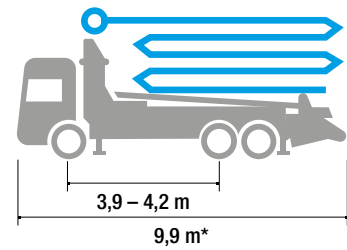
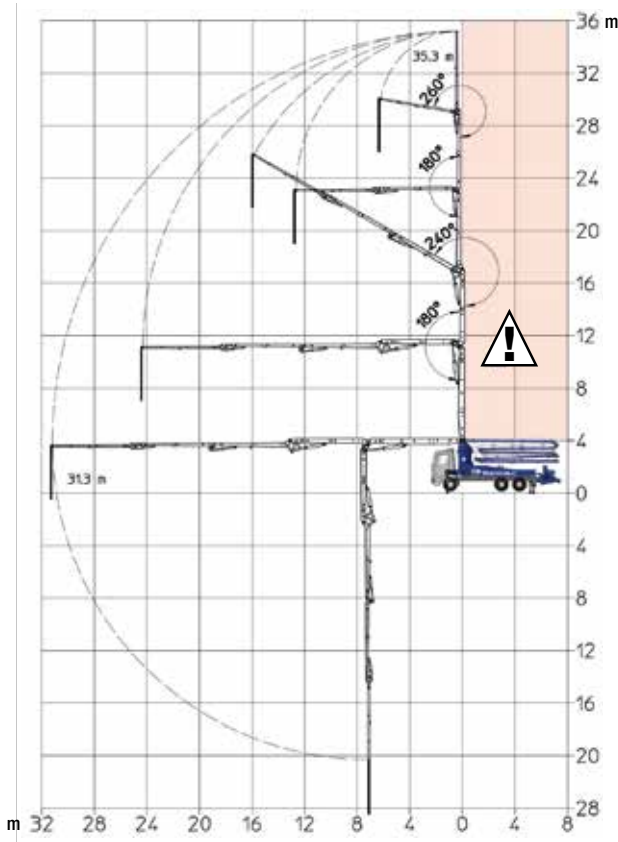
- Concrete pump produced, assembled and tested by SERMAC
- Structural integrity verified with the Finite Element Method (FEM)
- Pump frame designed for high torsion rigidity
- Suitable for assembly on 3-axle trucks
- Boom 5-stage, Z-folding type
- Pipeline diameter 125 mm (5")
- Main components sourced from genuine German and Italian manufacturers
- Pumping unit with open hydraulic system and high manganese cast iron S-valve
- Ideal for working in tight spaces



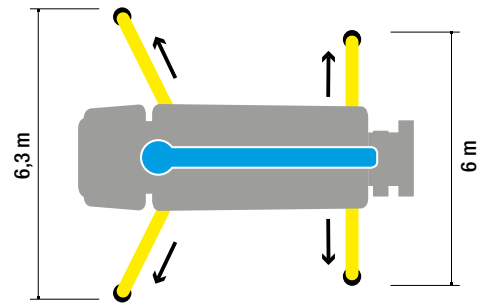
5Z36



NO WORKING AREA



*Dimensions varying according to truck assembly



PUMPING UNIT				
	S8		G9	
	AS8L09-130-61	AS8L09-150-76	AG9L09-148-80	AG9L10-158-80
THEORICAL OUTPUT (MAX)* ROD SIDE	130 m ³ /h - 170 yd ³ /h	150 m ³ /h - 196 yd ³ /h	-	-
THEORICAL OUTPUT (MAX)* PISTON SIDE	-	-	148 m ³ /h - 193 yd ³ /h	158 m ³ /h - 206 yd ³ /h
PRESSURE ON CONCRETE (MAX)* ROD SIDE	61 bar - 884 psi	76 bar - 1102 psi	-	-
PRESSURE ON CONCRETE (MAX)* PISTON SIDE	-	-	80 bar - 1160 psi	80 bar - 1160 psi
NUMBERS OF CYCLES PER MINUTES	27 '/min	30 '/min	30 '/min	27 '/min
PISTONS DIAMETER	230 mm	230 mm	230 mm	250 mm
CONCRETE CYLINDERS	2000 mm	2000 mm	2000 mm	2000 mm
S-VALVE DIMENSION	8"	8"	9"	9"
CONCRETE HOPPER CAPACITY	600 l	600 l	650 l	650 l

*Cannot be reached simultaneously



DISTRIBUTION BOOMS

MAX. VERTICAL REACH	35,3 m (115'9")
MAX. HORIZONTAL REACH	31,3 m (102'8")
MAX. DOWNWARD REACH	-24,7 m (81')
NUMBER OF BOOM SECTIONS	5
MIN. UNFOLDING HEIGHT	6,75 m (22'1")
BOOM ROTATION	370°
BOOM SECTION ARTICULATION	90° - 180° - 240° - 180° - 260°
BOOM UNFOLDING SYSTEM	Z
FRONT OUTRIGGERS	Telescopic "X"
REAR OUTRIGGERS	Horizontal
FRONT OUTRIGGER SPAN	6,3 m (20'8")
REAR OUTRIGGER SPAN	6 m (19'8")
RUBBER END HOSE LENGHT	3,9 m

STANDARD EQUIPMENT

- X-type front outriggers and horizontal type rear outriggers
- Straight pipes made in twin-wall with highly abrasion resistant induction hardened inner liner. Elbows made in twin-wall with chromium carbide inner liner
- Two sets of radio remote controls provided with 2-speed proportional boom control, automatic free frequency search, 8-position joysticks and concrete output control
- Wear compensation system between wear plate and wear ring. Wear plate and wear ring with tungsten carbide inserts.
- Automatic hopper greasing unit with manual back-up system
- Automatic oil lubrication for piston rams
- Safety device on hopper door and hopper grate
- Remote controlled electric vibrator on hopper grate
- Hydraulic powered diaphragm water pump (75 l/min - 30 bar)
- Water tank capacity 650 l
- Work light on hopper
- Metal bin for accessories beside hopper
- Warning horn on the boom
- Accessories for cleaning and maintenance

ELECTRONIC STABILITY CONTROL SYSTEM

- Sermac Control Stability (SCS)



ACCESSORIES ON REQUEST

- Additional work light on hopper
- Air compressor for pipeline cleaning (450 l/min)
- Aluminium hopper cover
- Air charged sprayer for concrete release agent (25 l - 8 bar)
- Automatic release of end hose
- Automatic boom greasing system
- Pressure washer with fan-shaped nozzle (17 l/min - 130 bar)
- Stop flow on end hose
- Multi-stage water pump (230 l/min - 12 bar)
- Pipe storage
- Rear camera for easy manoeuvring
- Proportional radio control with display



TRUCK MOUNTED PUMPS

12 different pump models with modern front X-type outriggers and provided with booms with different fold configurations from 20m to 65m vertical reach.



MIXER PUMPS

4 models with Z-fold distribution booms from 21m to 33m vertical reach.



TRAILER PUMPS

7 different models in the combined 6" and 8" Series available in high- and low pressure models.



STATIONARY BOOMS

Stationary boom model with 33m reach.



SERMAC Srl

Sede centrale: Via A. Manzoni, 146 - 20811 Cesano Maderno, (MB) Italy
Tel. +39 0362 364 320 - Fax +39 0362 163 2000
info@sermacpumps.com



www.sermacpumps.com