

Vermilion Parish

BIDDY



2019

BIDDY

BASKETBALL

NATIONAL TOURNAMENT

MARCH 29TH - APRIL 2ND





*Preparing young athletes for the next level in life and sports*

**337-937-4360**

[www.qualitysports.org](http://www.qualitysports.org)

12725 North Road Erath, LA 70533



# PARENTS,

PLEASE PRINT & READ

YOUR ENTIRE PACKET

THIS IS INFORMATION IS TO ASSIST YOU & YOUR COACHES SO YOU ARE BETTER INFORMED ABOUT THE DETAILS OF THE WORLD TOURNAMENT.

WITH QUESTIONS, FIRST CONSULT YOUR COACHES. IF ANY QUESTIONS CAN'T BE ANSWERED, PLEASE CONTACT THE TOURNAMENT DIRECTOR, BIDDY PRESIDENT OR CO-CHAIRPERSONS.

TOMMY PICARD  
TOURNAMENT DIRECTOR  
CELL: (337)319-9288  
[vyouth@aol.com](mailto:vyouth@aol.com)

JEREMY PICARD  
QUALITY SPORTS AUTHORITY DIRECTOR  
CELL: (337)254-7544  
[jeremy@qualitysports.org](mailto:jeremy@qualitysports.org)



*Preparing young athletes for the next level in life and sports*

**337-937-4360**

[www.qualitysports.org](http://www.qualitysports.org)

12725 North Road Erath, LA 70533



Dear Coaches, Parents and Players:

On behalf of the Quality Sports Authority Board of Directors, I wish to extend a warm welcome to the players, coaches, and friends to the 2019 9-10 Year Old World Biddy Basketball Tournament. We also want to congratulate all the teams from around the country who will join us this week.

Games will be held at the Henry Elementary Gym, the Leblanc Elementary Gym and the Erath High School Gym.

Be sure to read all of the material in your packet and call me at 337-319-9288 if you have any questions.

Good luck to all participants and we hope that your stay in Vermilion Parish will be a rewarding one and we wish the best of luck to all participants. If I can be of any assistance please call 337-319-9288.

Cordially,

Tommy Picard  
Director  
Quality Sports Authority



*Preparing young athletes for the next level in life and sports*

**337-937-4360**

[www.qualitysports.org](http://www.qualitysports.org)

12725 North Road Erath, LA 70533



### Important Phone Numbers

2019 Biddy World Tournament  
Headquarters/Office

Quality Sports Authority  
12725 North Road  
Erath, Louisiana  
Quality Sports and RV Park  
Erath, La. 70533  
337-937-4360  
337-937-4359(fax)

2019 Biddy Tournament Sites

Erath High School  
808 South Broadway  
Erath, Louisiana 70533

Henry Elementary  
6305 La Hwy 330  
Erath, La 70533

Leblanc Elementary  
4511 E La Hwy 338  
Abbeville, La. 70510

In case of unauthorized absence, contact:

Tommy Picard  
337-937-4360(office)  
337-319-9288(cell)  
337-898-2860(home)

In case of illness, contact:

(1) Team Coach  
(2) Biddy Tournament  
Headquarters  
(3) Tournament Director





*Preparing young athletes for the next level in life and sports*

**337-937-4360**

[www.qualitysports.org](http://www.qualitysports.org)

12725 North Road Erath, LA 70533



### Special Notes

In any instance where coaches may have a question pertaining to their duties or players' obligations, please do not hesitate to contact the Biddy National Tournament Headquarters or Tournament Site.

### Schedule of Events

#### Arrivals

All teams should be in Erath, La. one hour before your team first scheduled game. Teams will be responsible for their own transportation. All teams will be report to the Henry Elementary School at assigned times.

#### Headquarters:

Tournament Headquarters will be at the Quality Sports Authority Office located at 12725 North Road in Erath. The phone number is 337-937-4360.

#### Game Site:

Games will be played at Erath High School, Henry Elementary and Leblanc Elementary. The phone numbers are listed at the top of this information booklet.

#### Practice Schedule:

For Practice Schedule call the Quality Sports Authority Office between 9:30am and 4:30pm at 337-937-4360. Contact Tommy Picard at 337-319-9288.

#### Coach's Meeting

The Coach's Meeting will be held at Erath High School Gym located at 808 South Broadway. Time is TBA *We will check credentials at this time.*



*Preparing young athletes for the next level in life and sports*

**337-937-4360**

[www.qualitysports.org](http://www.qualitysports.org)

12725 North Road Erath, LA 70533



### Admission:

Admission prices to tournament games are eight dollars for adults and five dollars for children.

### Coach's instruction:

Officials of Quality Sports Authority, and the hard working volunteers have made extensive efforts to make your stay in Abbeville pleasant and rewarding. Therefore, we shall expect that you cooperate with the following regulations pertaining to your actions during the tournament.

1. We want participants to thoroughly enjoy themselves during the tournament.  
If you need any information or assistance, contact your tournament director.
2. Each coach is responsible for his personal conduct on and off the court. No conduct which could be interpreted as detrimental to the basic aims of Biddy Basketball, which is "building a better citizenship," will be tolerated. Any team or individual whose conduct is not above reproach will be disqualified and sent home without delay.

### Player's instructions:

#### 1. Assistance

We want every participant to thoroughly enjoy themselves during the World Tournament.

If you need any information or assistance, contact your team coach immediately.

#### 2. Reporting

Each team player must report on the schedule reporting day with the team, for this 2019 Biddy 9-10 National Tournament.





*Preparing young athletes for the next level in life and sports*

**337-937-4360**

[www.qualitysports.org](http://www.qualitysports.org)

12725 North Road Erath, LA 70533



3. Conduct

Your conduct must be above reproach on the court and away from the court. Any misbehavior or misconduct not only could cause your disqualification from the tournament, but could also disqualify your team.

4. Schedule

Follow your team schedule at all times. Be at practice sessions, tournament games and special events on time. Be sure to check with your coach whenever you divert from the listed functions.

5. Appearance

We expect your dress to be neat at all times. You may, of course, dress informally and comfortably at the field. Bare foot will not be permitted, on the street or field.

6. Curfew

All players are to be in their motel room (1) hour after the day's last scheduled activity or game. If an event or game goes beyond 12 midnight, all team members will return directly to their motel following the event. There will not be one (1) hour grace period.

7. Uniforms

Each player on the same team shall wear a different number on his/her uniform. The regular Biddy Basketball emblem shall be worn on left leg of the uniform shorts.

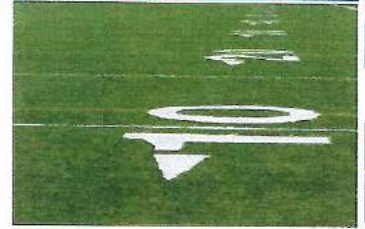


*Preparing young athletes for the next level in life and sports*

**337-937-4360**

[www.qualitysports.org](http://www.qualitysports.org)

12725 North Road Erath, LA 70533



8. Host team

Members of the Host team are to be treated and are subject to the same regulations as the other teams.

Game Conduct

1. All games will be played under Biddy Basketball rules and regulations listed in the Biddy Basketball Rules and Regulation manual. Games will be kept moving at all times. No unnecessary delays will be permitted.
2. Anyone---players, coaches or parents acting in an unsportsmanlike manner, shall be removed from the gymnasium immediately and disqualified from the tournament. If it is a parent, they will be asked to leave and not allowed to return.
3. Only twelve players and three coaches will be recognized by the tournament and allowed on the bench during games. (NO EXCEMPTIONS)
4. No smoking will be permitted in the gym or banquet area. Anyone wishing to smoke must do so outside of these areas.

Special Instructions

1. The Biddy Basketball National Tournament Director shall have the authority to remove any player, coach or parent for actions detrimental to Biddy Basketball. Any misbehavior or misconduct during a game or away from the field could cause the disqualification of a coach, player or the entire team from the tournament.





SPORTS  
AUTHORITY

*Preparing young athletes for the next level in life and sports*

**337-937-4360**

[www.qualitysports.org](http://www.qualitysports.org)

12725 North Road Erath, LA 70533



2. The tournament is under the jurisdiction of the Biddy Basketball Tournament Director.
3. The Biddy Basketball National Director or anyone he designates to have final authority on any protest or complaints.
4. All games will be played at Erath High School, Leblanc Elementary and Henry Elementary gym.
5. Practice schedule will be available at the Quality Sports Authority Office.
6. Players must be in uniform and lineups must put in the book one (1) hour before scheduled game.
7. The home team will be bottom of bracket unless pool play. If pool play a flip of a coin will decide home team.
8. Teams are responsible for their own rooms and meals for their players, coaches, and parents.

## Player Registration for Special Events



Team/League\_\_\_\_\_

Age Group\_\_\_\_\_

**Player May Enter only one event**

### **Free Throw Shooting:**

Player\_\_\_\_\_

No.\_\_\_\_\_

### **Around The World:**

Player\_\_\_\_\_

No.\_\_\_\_\_

### **Hot Shot:**

Player\_\_\_\_\_

No.\_\_\_\_\_

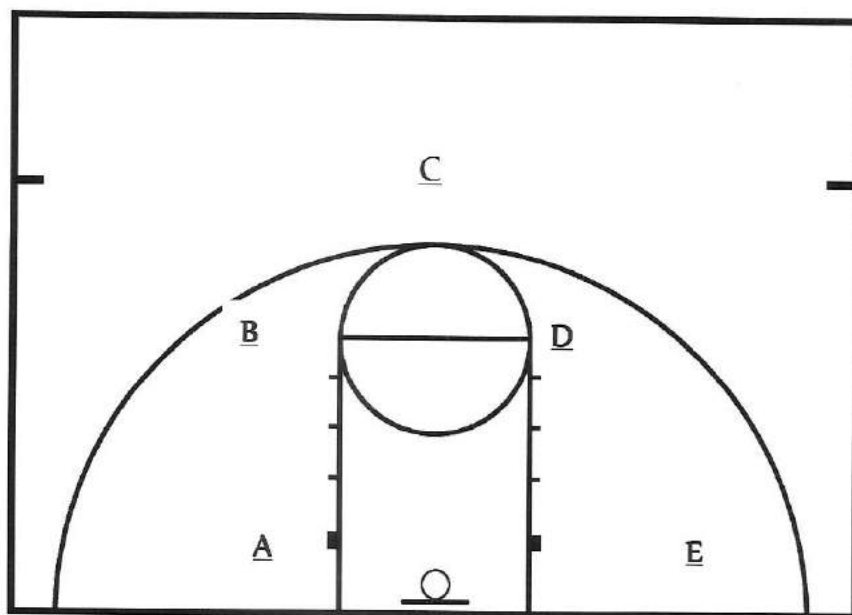
**TURN THIS IN AT CREDENTIAL CHECK ON FRIDAY!!**



# HOT SHOT CONTEST/RULES

DRIBBLE FROM HALF COURT INTO SHOOTING RANGE. SHOOT FROM HOTSPOTS IN ANY SEQUENCE YOU PREFER OR SHOOT LAY-UPS. YOU WILL ONLY RECEIVE SCORES FOR TWO LAY-UPS. ALL OTHER SHOTS MUST BE MADE FROM ANY OR ALL FIVE HOTSPOTS MARKED ON THE COURT. IF YOU CHOOSE TO SHOOT FROM ALL 5 HOT SPOTS YOU'LL GET 5 BONUS POINTS. \*\*\*\*ATTEMPTING A SECOND SHOT FROM ALL 5 HOTSPOTS YOU WILL RECEIVE 10 ADDITIONAL BONUS POINTS. ONE POINT IS SUBTRACTED FOR EACH INFARCTION; WALKING, PALMING, DOUBLE-DRIBBLING.

AWARDS ARE GIVEN TO THE CHAMPION, RUNNER-UP & 3<sup>rd</sup> PLACES.

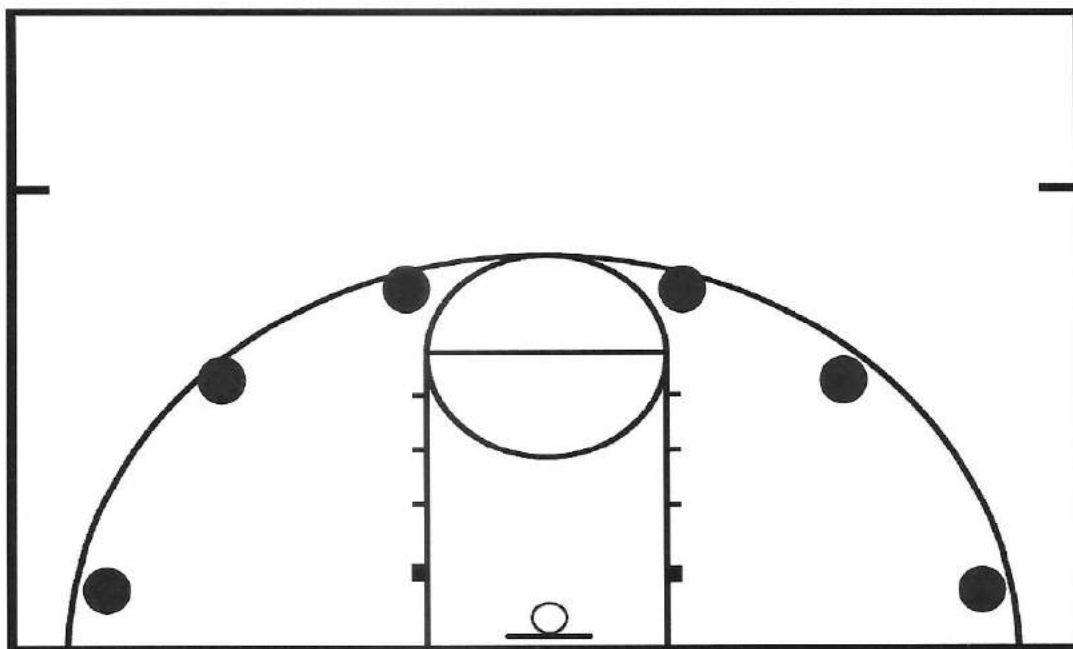


SCORING:		POINTS
LAY-UP		2
HOTSPOT - A		2
HOTSPOT - B		4
HOTSPOT - C		5
HOTSPOT - D		3
HOTSPOT - E		3
BONUS	SHOOTING FROM ALL 5 HOTSPOTS	5
BONUS	SECOND SHOT FROM ALL 5 HOTSPOTS	10

# AROUND THE WORLD CONTEST RULES

1. EACH PLAYER WILL GET THREE (3) WARM-UP SHOTS PRIOR TO EACH ROUND.
2. SHOTS MUST BE TAKEN IN FRONT OF THE MATS (SEE DIAGRAM) FROM BEHIND THE THREE POINT LINE. "A LEGAL 3 POINT SHOT".
3. STARTING IN THE CORNER, EACH PLAYER SHOOTS SIX (6) SHOTS AROUND THE FRONT COURT, THEN ANOTHER SIX (6) SHOTS FOR A TOTAL OF TWELVE (12) SHOTS.
4. PLAYERS WILL ALTERNATE AFTER EACH SHOT & CHANGE WHO GOES FIRST AFTER THE FIRST SIX (6) SHOTS.
5. EACH SHOT MADE COUNTS AS ONE (1) POINT.
6. NO POINT AWARDED IF THE PLAYER VIOLATES THE MAT/LINE.
7. TOP EIGHT (8) FINISHERS AFTER THE FIRST ROUND MOVE TO THE SECOND ROUND OF EIGHT (8).
8. TOP FIVE (5) FINISHERS OF THE SECOND ROUND MOVE TO THE THIRD ROUND OF FIVE (5).
9. TOP THREE (3) FINISHERS OF THE THIRD ROUND MOVE TO THE FINAL ROUND OF TWO (2). POINTS ARE CARRIED AND ADDED WITH EACH ROUND.

AWARDS ARE GIVEN TO THE CHAMPION, RUNNER-UP & 3<sup>rd</sup> PLACES





## **FOUL SHOOTING CONTEST RULES**

**EACH PLAYER WILL GET THREE (3) WARM-UP SHOTS PRIOR TO EACH ROUND.**

**PLAYERS WILL SHOOT THREE (3) SETS OF FIVE (5) SHOTS EACH FOR A TOTAL OF FIFTEEN (15) SHOTS PER ROUND.**

**EACH SHOT MADE COUNTS FOR ONE POINT.**

**NO POINT AWARDED IF THE PLAYER VIOLATES THE FOUL LINE.**

**TOP EIGHT (8) FINISHERS AFTER THE FIRST ROUND MOVE TO THE SECOND ROUND OF EIGHT (8).**

**TOP FIVE (5) FINISHERS OF THE SECOND ROUND MOVE TO THE THIRD ROUND OF FOUR (5).**

**TOP THREE (3) FINISHERS OF THE THIRD ROUND MOVE TO THE FINAL ROUND OF THREE (3). POINTS ARE CARRIED AND ADDED WITH EACH ROUND.**

**AWARDS ARE GIVEN TO THE CHAMPION, RUNNER-UP & 3<sup>RD</sup> PLACES.**

**2019 10 YEAR OLD BOYS NATIONAL TOURNAMENT**  
**MEDICAL RELEASE FORM**  
**\*MUST BE RELEASE BY ALL PLAYERS**

I, being the Parent or Legal Guardian of \_\_\_\_\_ hereby fully  
Consent to medical care to be rendered by a competent medical physician in the event the  
above named child should require such attention during the Biddy Basketball National  
Tournament held in Vermilion Parish, La.

\_\_\_\_\_  
Signature of Parent/Guardian

\_\_\_\_\_  
Witness

\_\_\_\_\_  
Team Name

\_\_\_\_\_  
Witness

\*\*\*\*\*

I, being the Parent or Legal Guardian of \_\_\_\_\_ hereby fully  
Consent to medical care to be rendered by a competent medical physician in the event the  
above named child should require such attention during the Biddy Basketball National  
Tournament held in Vermilion Parish, La.

\_\_\_\_\_  
Signature of Parent/Guardian

\_\_\_\_\_  
Witness

\_\_\_\_\_  
Team Name

\_\_\_\_\_  
Witness

\*\*\*\*\*

I, being the Parent or Legal Guardian of \_\_\_\_\_ hereby fully  
Consent to medical care to be rendered by a competent medical physician in the event the  
above named child should require such attention during the Biddy Basketball National  
Tournament held in Vermilion Parish, La.

\_\_\_\_\_  
Signature of Parent/Guardian

\_\_\_\_\_  
Witness

\_\_\_\_\_  
Team Name

\_\_\_\_\_  
Witness

\*\*\*\*\*



**COMPLETE/FAX/E-MAIL TO TOURNAMENT DIRECTOR**

## OFFICIAL TOURNAMENT ROSTER

TEAM NAME			
CITY & STATE			
TEAM'S MASCOT			
HEAD COACH(HC)			
ASST. COACHES	1.		
	2.		
	3.		
HC'S CELL #		FAX #	
E-MAIL ADDRESS			

[illegible]



*Preparing young athletes for the next level in life and sports*

**337-937-4360**

[www.qualitysports.org](http://www.qualitysports.org)

12725 North Road Erath, LA 70533



### *Direction to the Henry Gym*

Physical address is 6305 La Hwy 330, Erath, La. 70533

From New Iberia:

Off of Hwy 90 take Hwy 14 East for about 11 miles until you get into Erath. At red light turn left on to La-14 West (old Hwy 14). Go to Red light continue straight and the next street will be South Kibbe. Turn left onto South Kibbe and you will see Champagne's Supermarket on your right. Continue south on La-331 for 5 miles until you get to a stop sign. At this stop sign it will Hwy 330. Turn right and go 1.5 to 2 miles and turn left onto Hwy 689. The Gym will be located on your left.

From Lafayette:

Take Hwy 167 south for about 18 miles. You will get to a Red light and this will be Veteran Memorial Drive. There will be a Shop Rite on your left and Ray Chevrolet on your right. At this red light turn left and go to Red Light at Burger King. At the Red Light turn right onto State Street and head south. You will go through four red light, a caution light and a stop sign. At the stop sign you will see a Cracker Barrel on your left. At the stop sign continue south and State Street will turn into Hwy 330. Continue south on 330 for about 5 ½ miles. You will arrive in a very small town called Henry. You will turn right onto Hwy 689 and the gym will be on your left hand side.



*Preparing young athletes for the next level in life and sports*

**337-937-4360**

[www.qualitysports.org](http://www.qualitysports.org)

12725 North Road Erath, LA 70533



*Directions to EHS Gyms*  
*306 Caldwell Road, Erath, La. 70533*

**From New Iberia:**

Off of Hwy 90 take Hwy 14 East for about 13 miles until you get into Erath. Once in Erath you will get to a red light which is the junction of Hwy 339. At this Red Light turn right until the stop sign at the stop sign turn right onto Lastie Street. Go to red light and turn left onto Broadway. Once on Broadway continue south until you see a church on your left and the gym (Erath Middle) will be in the circle. To get to Erath High School gym continues south to the next street on your right which will be Caldwell. Turn right onto Caldwell and the gym (Erath High) will be on your left. Address for Erath Middle is 709 S. Broadway and for Erath High (306 Caldwell Street) to get to the gym.

**From Lafayette:**

Take Hwy 167 south for about 18 miles. You will get to a Red light and this will be Veteran Memorial Drive. There will be a Shop Rite on your left and Ray Chevrolet on your right. At this red light turn left onto Veteran Memorial Drive (Hwy 14 Bypass) and head east for about 7 or 8 miles. You will get into Erath and see an Exxon (Eddie's) on your right. Turn right onto Broadway, go to the red light and continue south until you see a church on your left and the gym (Erath Middle) will be in the circle. To get to Erath High School gym continues south to the next street on your right which will be Caldwell. Turn right onto Caldwell and the gym (Erath High) will be on your left. Address for Erath Middle is 709 S. Broadway and for Erath High (306 Caldwell Street) to get to the gym continue south on Broadway.





*Preparing young athletes for the next level in life and sports*

**337-937-4360**

[www.qualitysports.org](http://www.qualitysports.org)

12725 North Road Erath, LA 70533



*Directions to Leblanc Elementary Gym*  
*4511 La Hwy 338, Abbeville, La. 70510*

From New Iberia:

Off of Hwy 90 take Hwy 14 East for about 13 miles until you get into Erath. Once in Erath you will go to 2<sup>nd</sup> red light on Hwy 14. You will see a carwash on your right before the red light. At the red light you turn right onto North Road (the QSA Sports and RV Park will be on your right) and head north to the stop sign at the end of North Road. Leblanc Elementary will be on your left and the gym in behind the school.

From Lafayette:

Take Hwy 167 south for about 18 miles. You will get to a Red light and this will be Veteran Memorial Drive. There will be a Shop Rite on your left and Ray Chevrolet on your right. At this red light turn left onto Veteran Memorial Drive (Hwy 14 Bypass) and head east for about 7 or 8 miles. You will get into Erath on Hwy 14 you will get to a Red Light. Turn left onto North Road (our sports complex will be on your right) and head north until the end of the north road to the stop and Leblanc Elementary will be on your left and the gym is behind the school.



Preparing young athletes for the next level in life and sports

337-937-4360

www.qualitysports.org

12725 North Road Erath, LA 70533



2019  
Biddy Nationals Tournament  
9-10 Year-Old Division

HOTEL INFORMATION:

These are a list of motels that are in the Abbeville area. If need assistance you may contact Tommy Picard at 337-319-9288 or call the Quality Sports Authority Office at 337-937-4360.

- |    |  |  |
|----|--|--|
| 1. | Sunbelt Lodge<br>1903 Veteran Memorial Drive<br>Abbeville, La. 70510<br>337-898-1453<br>Contact: Della Hardy                   | 1bed \$40+tax<br>2bed \$45+tax   |
| 2. | Best Western Abbeville Inn & Suites<br>3515 Veteran Memorial Drive.<br>Abbeville, La. 70510<br>337-740-4100<br>1(800)-780-7234 | Room Rates \$90+tax<br>Includes Breakfast  |
| 3. | Motel 6<br>3523 Veteran Memorial Drive<br>337-898-3180<br>866-647-3180   | King \$49.99+tax<br>Double \$55.99+tax<br>Fresh complimentary coffee available<br>in the lobby every morning |
| 4. | Executive Inn<br>730 Veteran Memorial Drive<br>Abbeville, La. 70510<br>337-740-4666  | King \$55+tax<br>Queen (2beds) \$65+tax<br>Includes Breakfast  |



*Preparing young athletes for the next level in life and sports*

**337-937-4360**

[www.qualitysports.org](http://www.qualitysports.org)

12725 North Road Erath, LA 70533



## RV Parks

- |    |  |                            |
|----|--|----------------------------|
| 1. | Abbeville RV Park<br>1501 West Port Street<br>Abbeville, La. 70510<br>337-898-4042                               | \$24.00 per night plus tax |
| 2. | Quality Sports and RV Park<br>12725 North Rd<br>Erath, La. 70533<br>337-937-4360 (office)<br>337-319-9288 (cell) | \$25.00 per night plus tax |



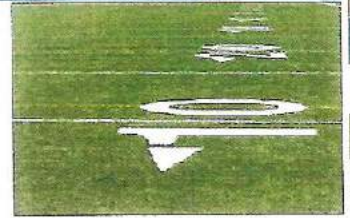


*Preparing young athletes for the next level in life and sports*

337-997-4354

[www.qualitysports.org](http://www.qualitysports.org)

12725 North Road Erath, LA 70533



Hotel/Facility	Address	Contact Name	Contact Phone	Rate
Comfort Suites-Oil Center	114 Rue Fernand	Aimee Broussard	337-456-8390	\$99.00
Courtyard by Marriott	214 E. Kaliste Saloom Rd.	Jeremy Broussard	(337) 232-5005	\$109.00
Holiday Inn Express & Suites	3903 Ambassador Caffery	Joanie Dalton	(337) 981-0600	\$109.00
Homewood Suites by Hilton	201 Kaliste Saloom Rd.	Danielle Tassin	(337) 264-6044	\$115.00
Residence Inn by Marriott	128 James Comeaux Rd.	Hannah Lemoine	(337) 232-3341	\$113.00
SpringHill Suites Lafayette	321 Settlers Trace Blvd.	Jacob Watson	(337) 981-5512	\$119.00
Staybridge Suites Lafayette	129 E. Kaliste Saloom Rd.	Cesalee Johnson	(337) 456-6626	\$129.00
Wyndham Garden Lafayette	1801 W. Pinhook Rd.	Elisabeth Francisco	(337) 233-8120	\$89.00