



Craft Your Imagination

beamo • Beambox • Beambox Pro

Desktop CO2 Laser Cutter & Engraver



beamio

Uses a CO2 laser powered 30-watt laser tube and offers a spacious 30 x 21 cm work area.

AED 8,499.00





Beambox

Uses a CO2 laser powered 40-watt CO2 laser and offers a spacious 40 x 37.5 cm work area.

AED 11,499.00

Beambox Pro

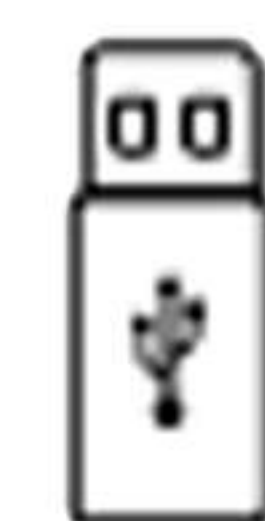
Uses a high powered 50-watt laser tube and offers a spacious 60 x 37.5 cm work area.

AED 16,499.00



Wireless Integration

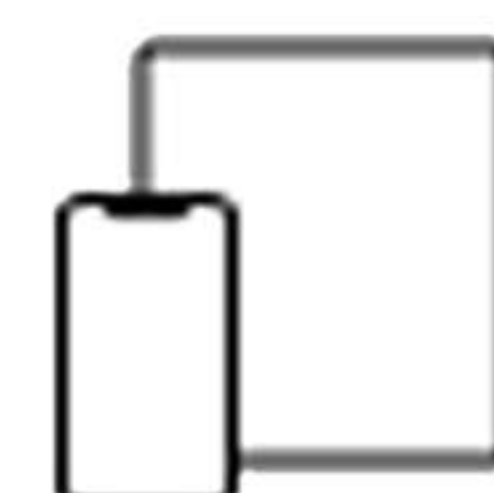
beamo comes fully equipped with Wi-Fi connectivity for a seamless workflow anywhere you are. Monitor work status, transfer files, or update settings plus when you download Beam Go app on mobile, you can transition from drawing, or photo upload to cut or engrave almost instantly.



**USB
Supported**

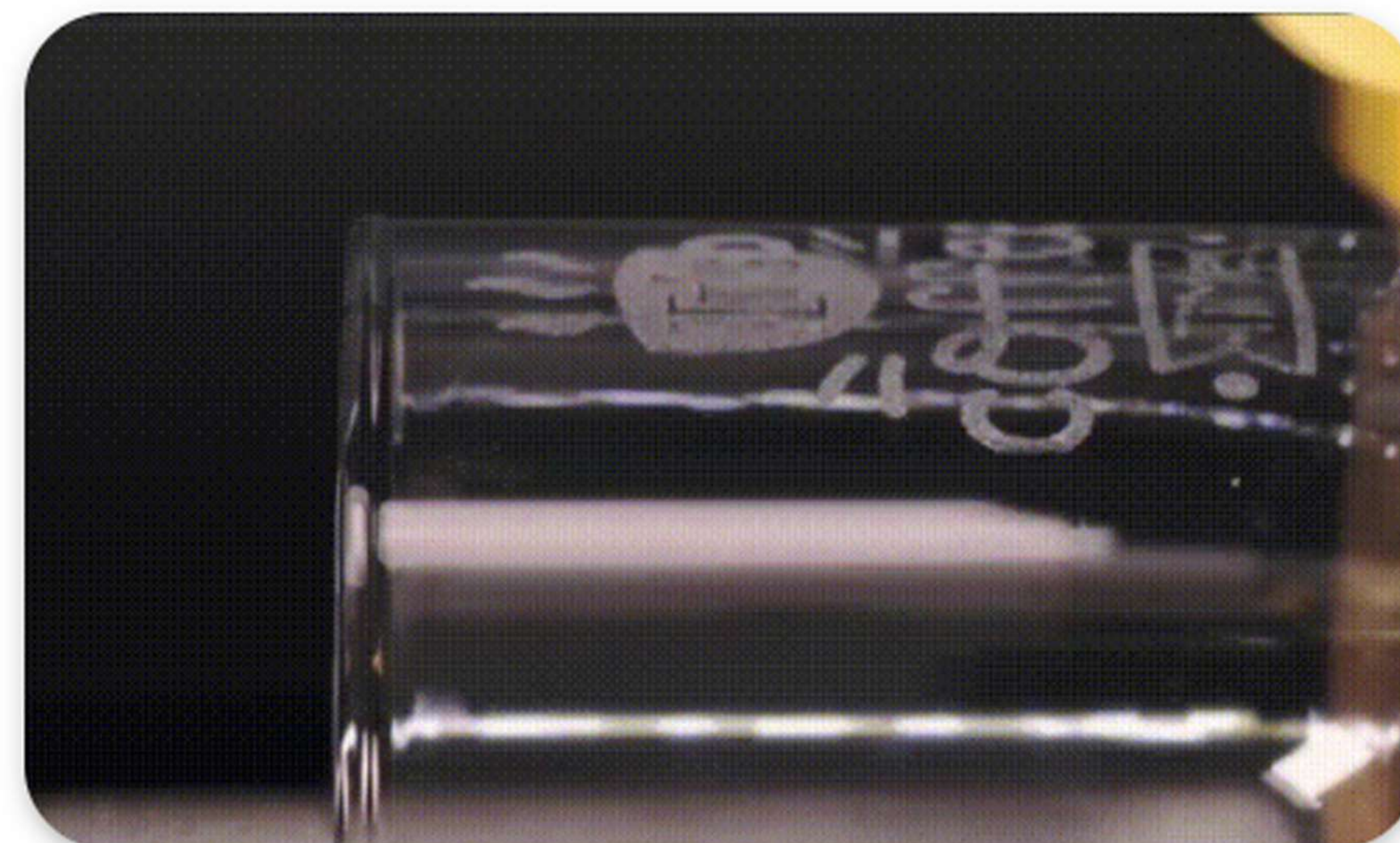


**Hard-Wire
Supported**



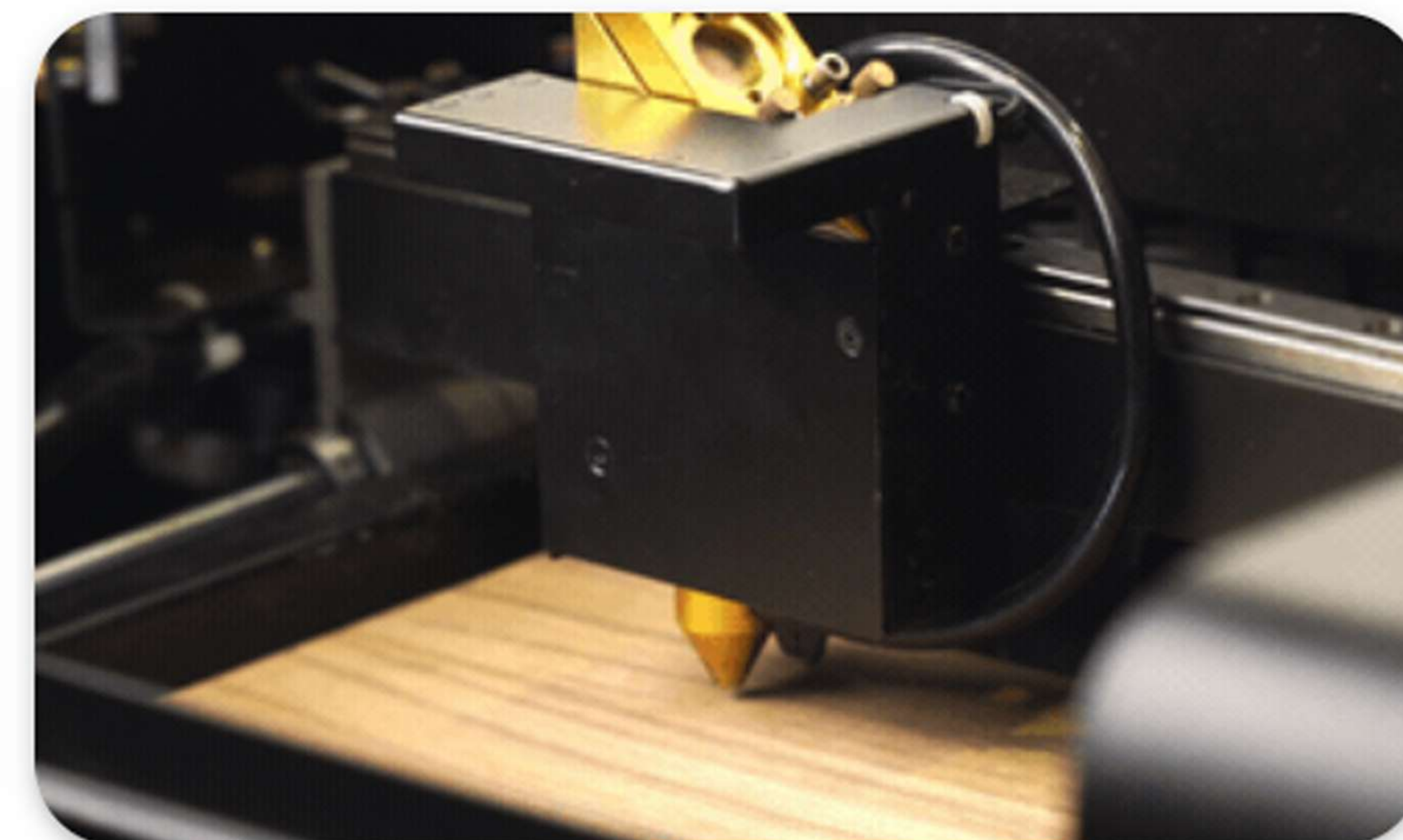
**Mobile Device
Supported**

Unlock More Capabilities with the FLUX Ecosystem



Smooth Rotary Module

Engrave on cylinder shapes like thermoses, mugs, pens, wine bottles, glassware and more with the rotary module attachment. The add-on opens a whole new dimension of customization!



Effortless Autofocus

You don't need prior laser experience to use beamo, the autofocus attachment will make any adjustments you need based on your materials. Enjoy a dependable cutting experience even on thicker materials.

Tech Specs	beamo	Beambox	Beambox Pro
Dimensions	177 x 615 x 455 mm (6.97" x 24.32" x 17.52")	250 x 830 x 670 mm (9.84" x 32.68" x 26.38")	250 x 1030 x 670 mm (9.84" x 40.55" x 26.38")
Work Area	210 x 300 x 45 mm	375 x 400 x 80 mm	375 x 600 x 80 mm
Weight	22 kg (48.5 lbs)	40 kg (88.2 lbs)	48 kg (105.8 lbs)
Laser Power	30 W	40 W	50 W
Laser Cutting Thickness	0 – 5 mm	0 – 10 mm	0 – 12 mm

Tech Specs	beamo	Beambox	Beambox Pro
Power	AC 110 V/220 V	AC 110 V/220 V	AC 110 V/220 V
Laser Type	CO2 Laser	CO2 Laser	CO2 Laser
Software Mode	Vector/Graphic (monochrome, grey scale)	Vector/Graphic (monochrome, grey scale)	Vector/Graphic (monochrome, grey scale)
File Type	JPG / PNG / SVG / DXF	JPG / PNG / SVG / DXF	JPG / PNG / SVG / DXF
Software Mode	Windows / macOS / Linux	Windows / macOS / Linux	Windows / macOS / Linux



 MAPTEC



Beam Air

Uses a highly effective 4-layer filtration system and a brushless motor with super air intake to block harmful molecules and odors generated during laser engraving.

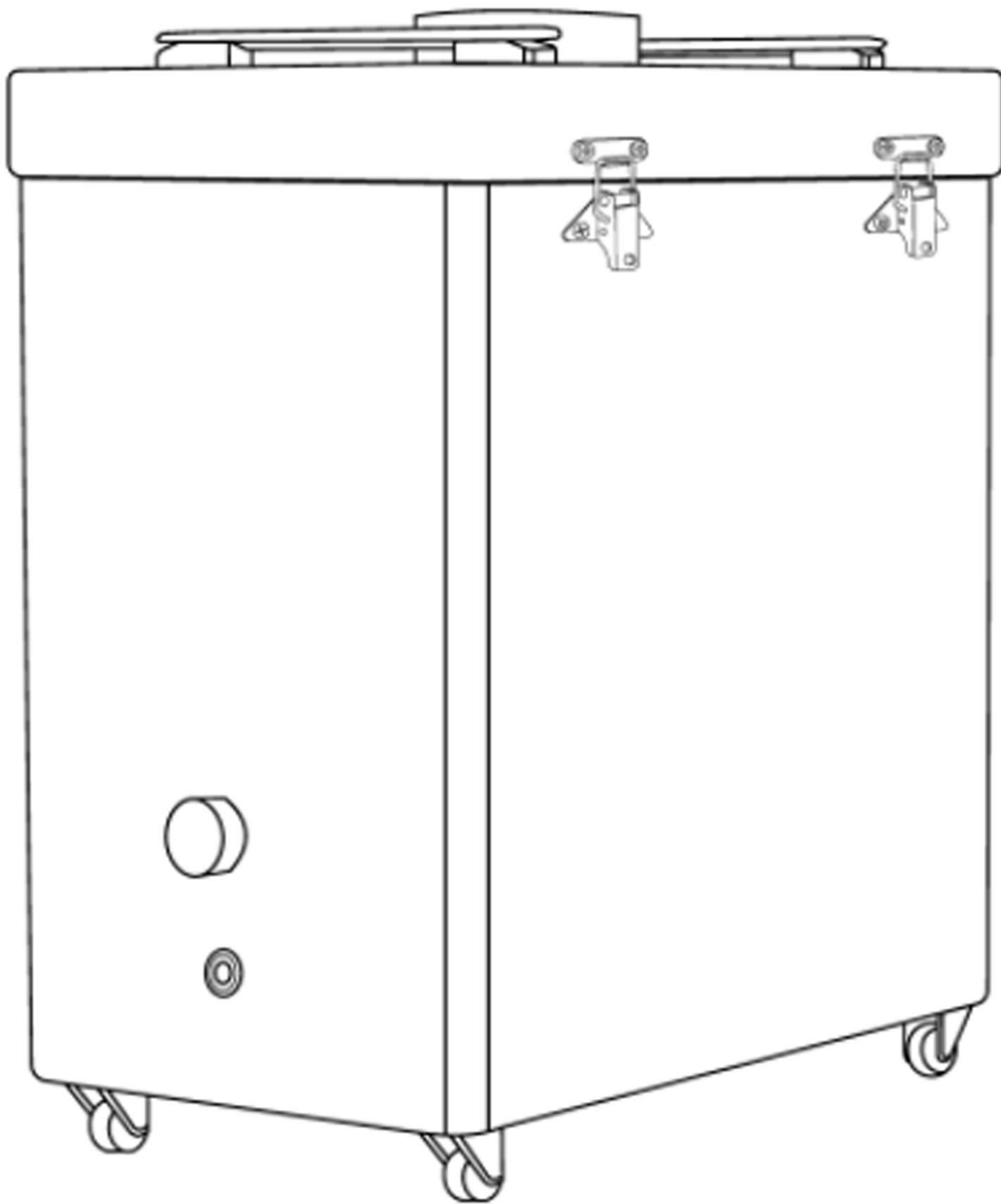
Size: 420 x 260 x 490 mm

Weight: 17 kg

AED 2,650.00

General

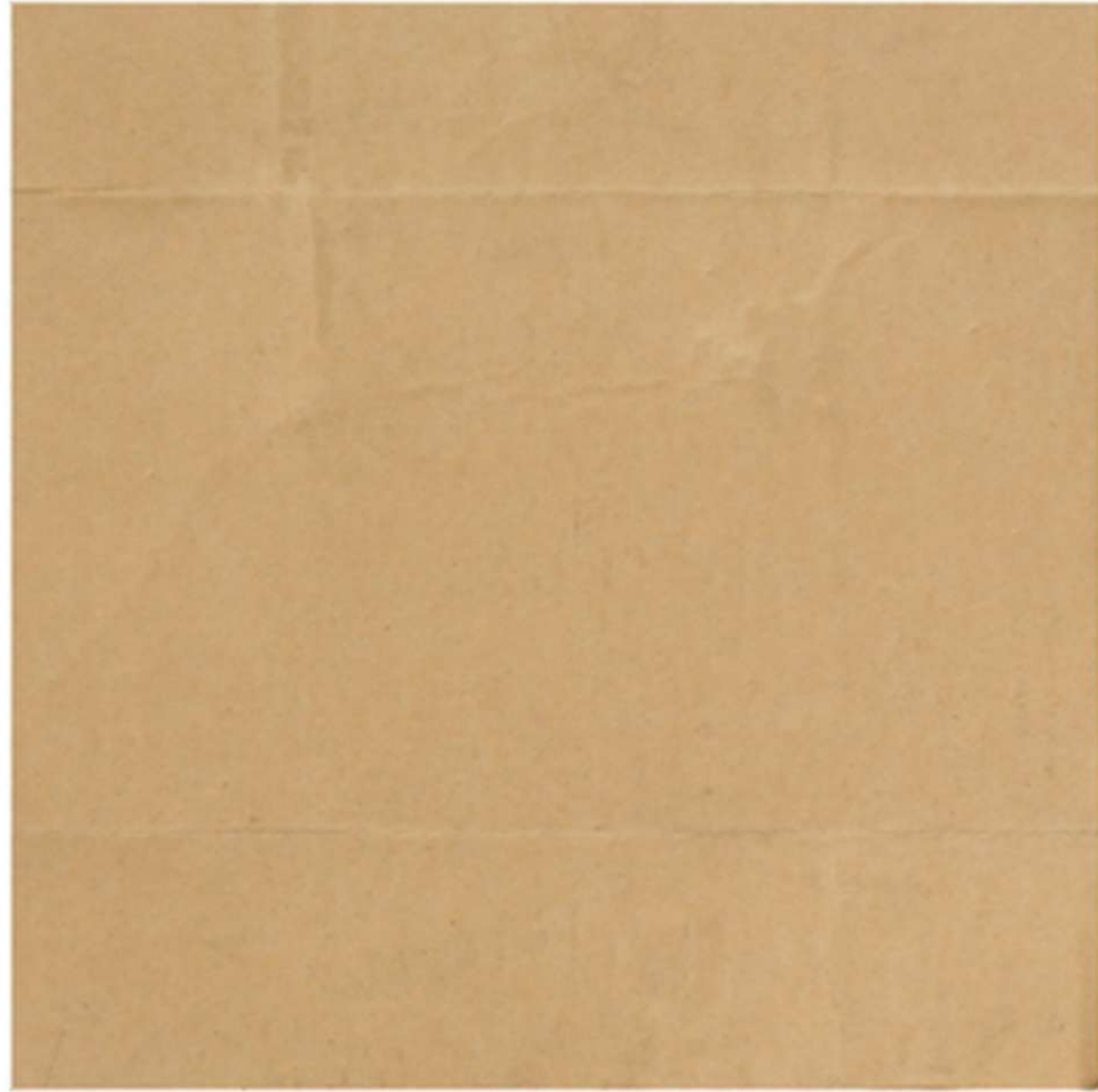
Dimensions	470 x 260 x 490 mm
Weight	17 kg
Power	AC 110V/220V
Max. fan volume	350CFM, 9800L per min
Voltage	180W
Inlet diameter	Φ 100mm
Filter	Pre-Filter, H13 HEPA filter, activated charcoal filter



Filter Replacement

Pre-filter	10 – 30 hr
Medium efficiency filter	50 – 150 hr
Activated charcoal filter	300 – 600 hr
HEPA filter	100 – 300 hr

Craft Your Favorite Material



Cardboard



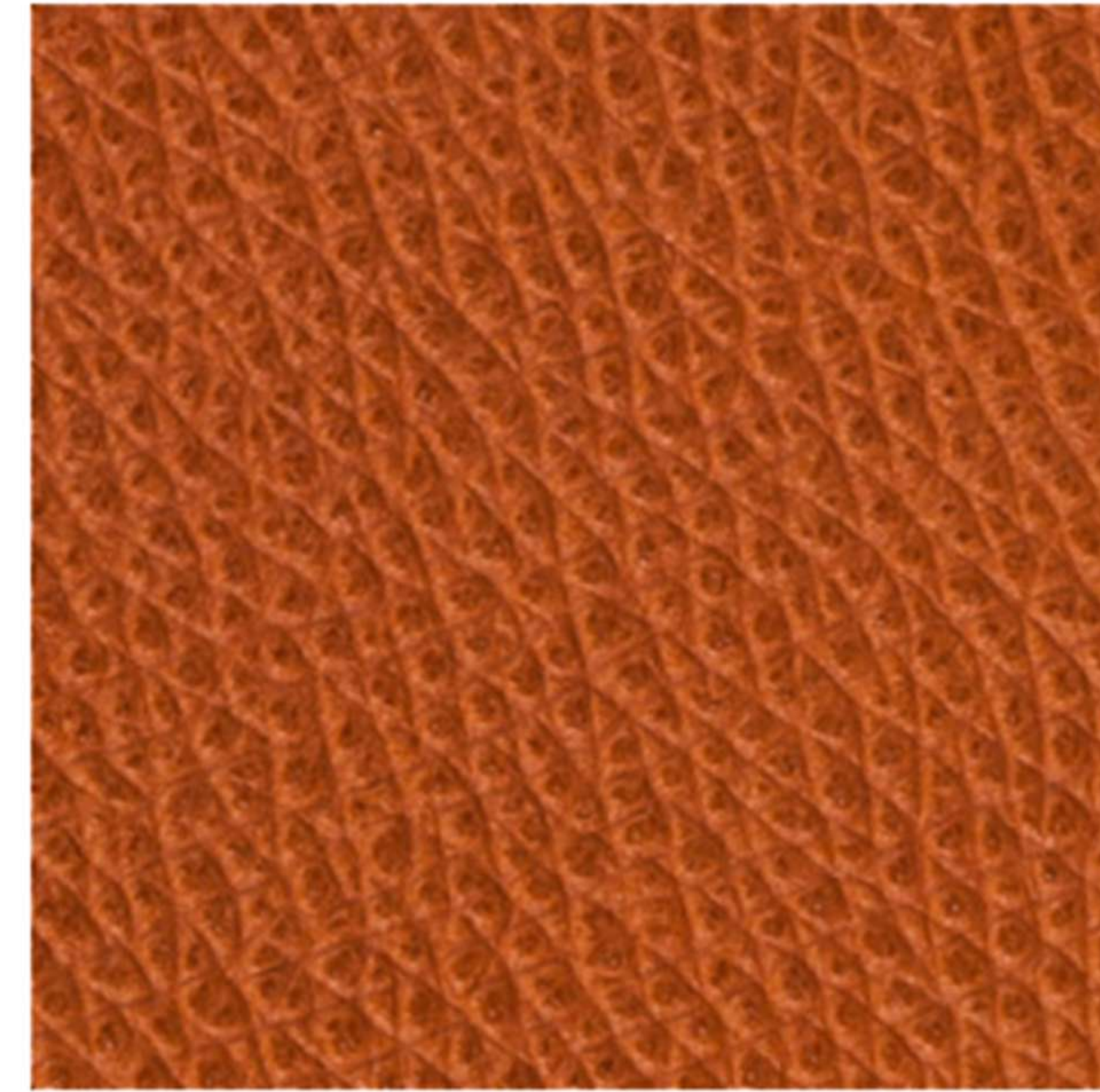
Wood



Fabric



Bamboo



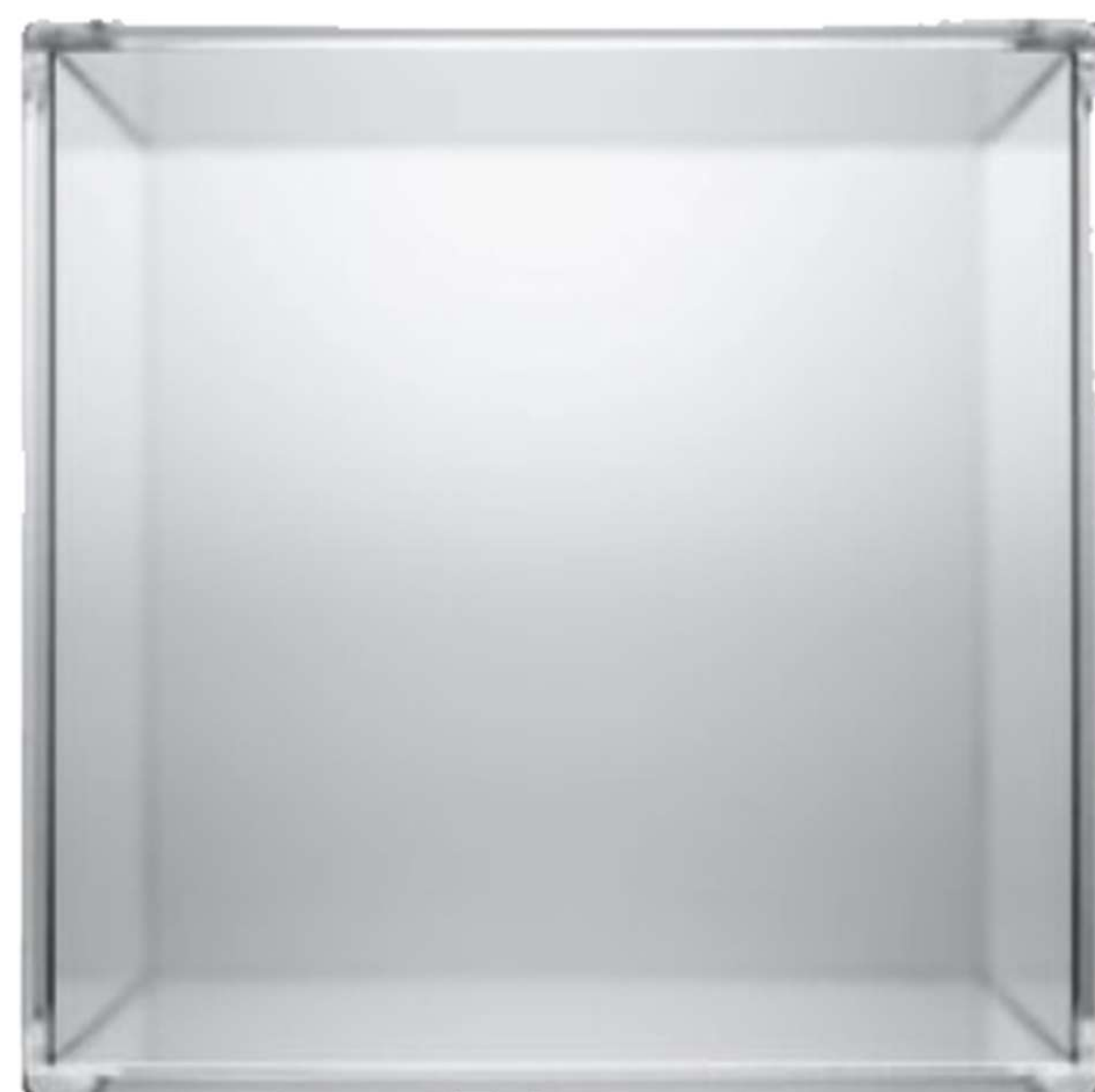
Leather



Rubber



Cement



Acrylic



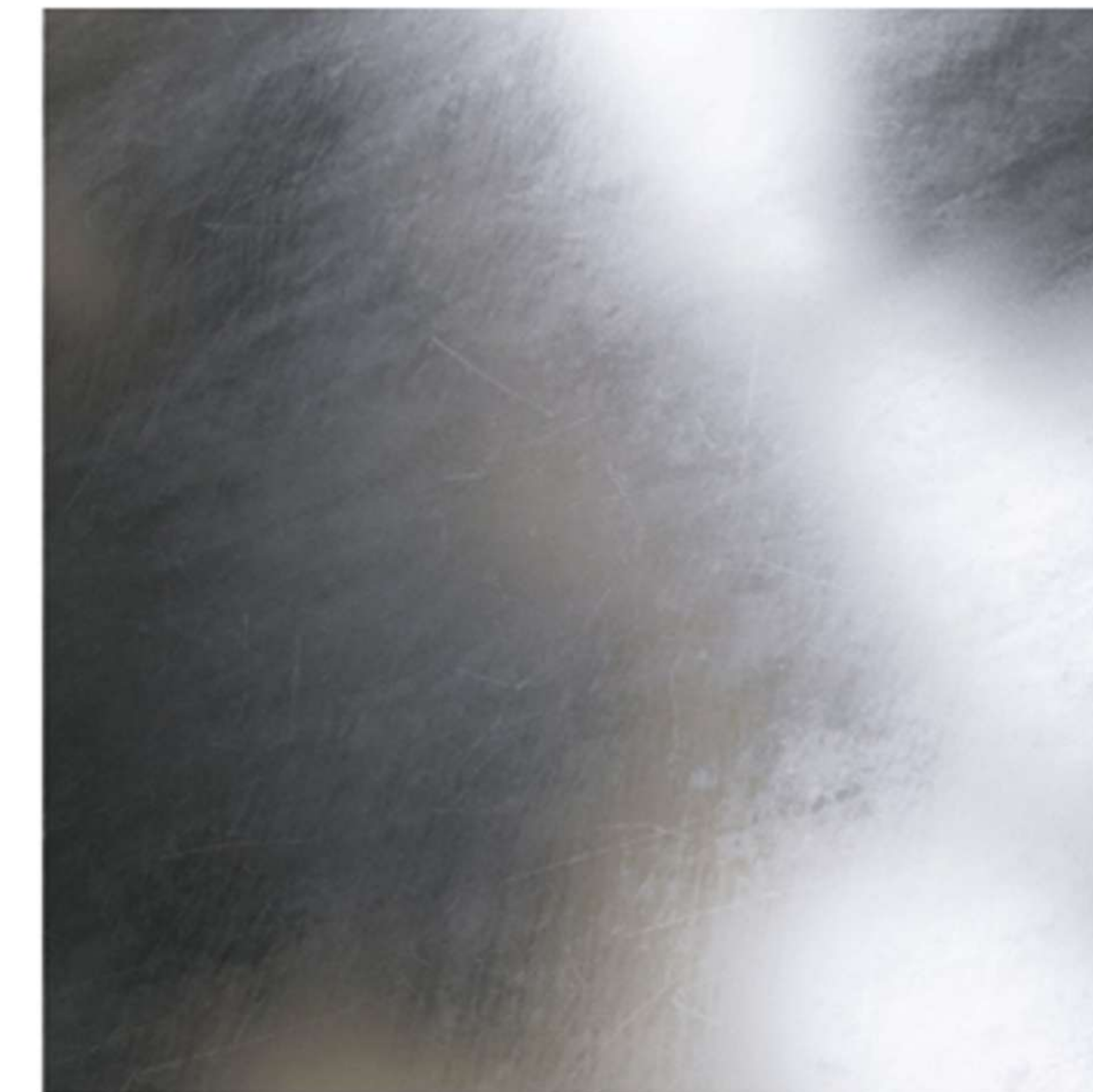
Glass



Stone



Anode Metal



Stainless Steel



Visit us

UAE Office:

WH1, Bin Sougat Bldg., 32c Street,
Nad Al Hamar Rd., Umm Ramool,
Dubai, United Arab Emirates

KSA Office:

A. Shifa Area, Al-Mussa Industrial Area,
Al-Nasser Street cross Hayel Road, Riyadh,
Kingdom of Saudi Arabia

Contact us

UAE Office:

+971 4 251 7734

KSA Office:

+966 545 823123

Email

info@maptec.ae

Website

www.maptec.ae