

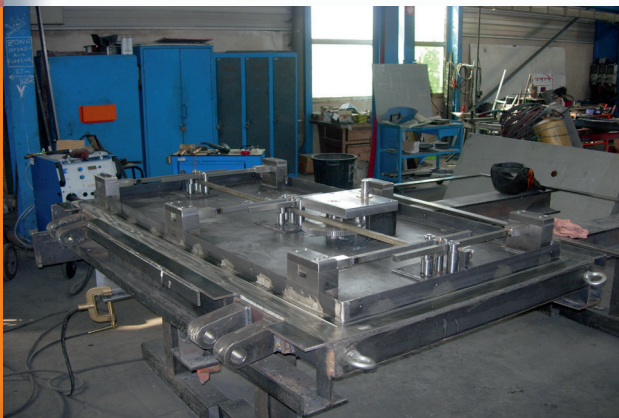
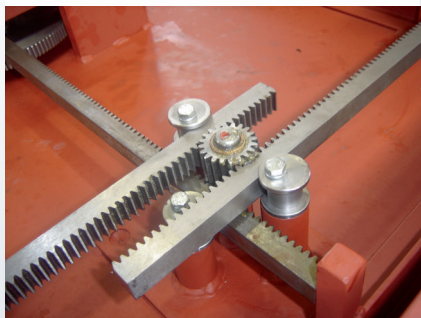
CASSIOPEE 20

AIR/WATERTIGHT (20 m WATER COLUMN) DOOR

PRESENTATION

Tailor-made

To meet the Post-Fukushima requirements



SEISMIC LOAD

Up to 9 g

BLAST PROTECTION

2 bars

WATERTIGHT

20 m Water column



INDUSTRY & REFERENCES

This type of door is intended to nuclear industry mainly to prevent natural disasters (tsunamis). These doors are installed in Flamanville 3, Olkiluoto 3 and Taishan EPR NPP according to post-Fukushima requirements.

TECHNICAL INFORMATION

- Rigid steel structure door with coating finish assembled by welding
- The frame is composed of different sizes angle brackets in painted steel, fitted with connectors for sealing into concrete
- Opening by machined hinges
- 6 points central locking system
- Operation by wheel
- Watertight silicone seal
- Pressure rated (air and/or water) both sides

IMPLEMENTATION

- Embedding of the frame in the 1st or 2nd phase of concreting by leaving a recess of 300 x 300 mm min. at the rim
- Possibility to weld the frame on pre-sealed anchor plates or peg into concrete

EQUIPMENT

- Anti-blast protection (up to 2 bar)

OPTION

- Finishing: galvanization Z600/ 3 layers of decontaminable painting
- Access control system
- Door closer
- Position switch (open/ closed)

STANDARD FEATURES

REQUIREMENT	RESULT	NORMS
Watertightness 20m water column	Hinges side = 84 l/h	Internal protocol
Watertightness 10m water column	opposite hinges = 0,5 l/h	Internal protocol
Design calculation	9,2 g for horizontal force 6 g for vertical force	Eurocodes 8 Specific spectra

DIMENSIONS

		MIN.	MAX.
1 leaf	Width*	27.56 in (700 mm)	51.18 in (1300 mm)
	Height*	63 in (1600 mm)	84.64 in (2150 mm) 96.46 in (2450 mm)

(*) : free opening

For other dimensions and specifications, please contact us.