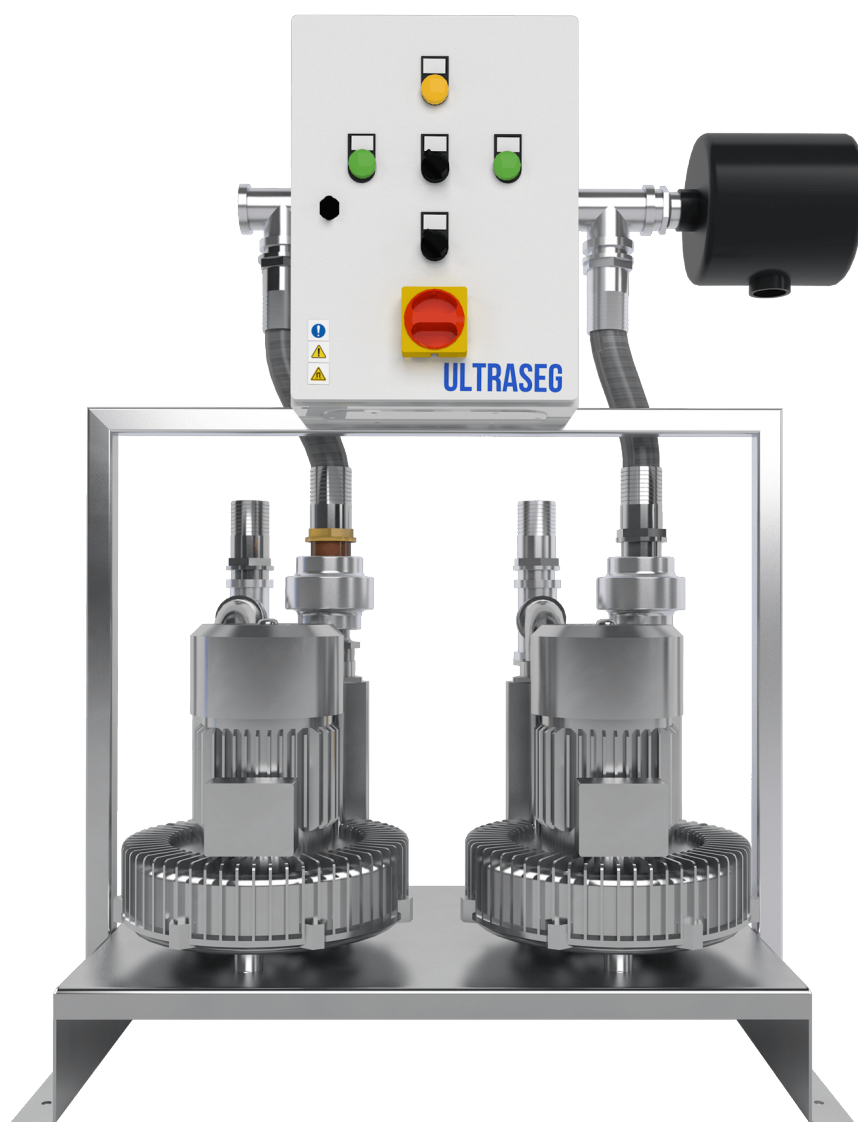


**ULTRA CONTROLO**

# ULTRASEG®



---

# ULTRASEG

---

## **ULTRASEG® Systems**

The Anaesthetic Gas Scavenging ULTRASEG system is an active system based on suction of anaesthetic gas mixtures from operating rooms and others fitted with nitrous oxide terminal units.

ULTRASEG design provides a very high level of capture of "pollution" at the source protecting medical staff against long term hazards due to exposure to anaesthetic gases. This is done by connecting the anaesthetic breathing circuit via a receiver unit to the terminal unit, generally installed close to the point of use.

### **Compatibility**

The ULTRASEG system is fully compatible with any anaesthetic gas scavenging receiver unit. Our terminal unit incorporate an adjustable orifice, which enables the flow rate to be adjusted in line with any standard including ISO 7396-2 and BS 6834, high-flow and low-flow systems.

### **Regulatory Compliance**

Anaesthetic Gas Scavenging ULTRASEG systems complies the requirements of international harmonized standards EN ISO 7396-2. ULTRASEG systems are designed and manufactured under an ISO 13485: 2016 e ISO 9001: 2015 Quality Management Systems.

### **Reliable Construction**

ULTRASEG systems are equipped with the latest vacuum pumps technology from the wellknown worldwide brand, Elmo Rietschle.

Ultra-Controlo has always used this brand of vacuum pumps which have a unique design, running thousands of hours in continuous regime without losing the initial properties. Not even the adverse external running conditions use to interfere with the good pump operation , ensuring an endless lifetime.

---

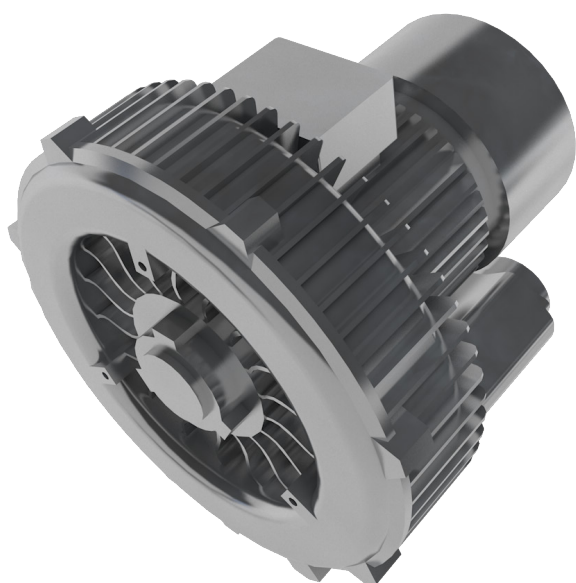
## THE SMART CHOICE

### **Basic configuration**

1 or 2 electrical control boxes;  
1 or 2 condensate collectors;  
1 set of valves and safety devices for good operation and long-life of the equipment.

### **Optionals**

Systems with variable speed for energy saving;  
Supplementary information for Building Management Systems BMS or remote information;  
Claw rotary pumps for high vacuum centralized systems to use for combined suction purposes or dedicated anaesthetic gas Suction system.



### **Technical Features**

**Suction level:** - 0.2 bar (see performance table);

**Capacities per pump:** 50 to 300 m<sup>3</sup>/h (50Hz);

**Motor power:** 0.2 to 2,2 kW, 400V, 50 Hz;

*Other voltages and frequencies according to the country regulations.*

*Other capacities under request.*



*With Elmo-Rietschle vacuum pumps, preventive maintenance is made in a snap, saving a lot in service and parts.*

### **Modular Construction**

Our anesthetics gas scavenging ULTRASEG system are usually built taking into account the physical space available. The suction pump has a modular construction allowing one pump to be in operation while the other is in standby or in maintenance without stop on the suction gas. In automatic mode the system allows for Turnover between the suction pump or the boot in ladder. Our electrical control box meet all the requirements of ISO 7396-2 for anesthetic gas suction systems.

### **Safe and simplified assembly**

ULTRASEG systems are delivered fully connected and pre-assembled, including interconnecting cables and hoses, so the installation turns very easy. The system is parameterized and factory tested, ready to install on site. Medium and large plants with pre-installation, commissioning, initial start-up and training of staff, as well as supervised by factory skilled technicians. They will keep your suction system working in perfect conditions.

### **Preventive maintenance extremely easy**

The maintenance of the plant is limited to an annual operating inspection and eventual replacement of the protective filter element on the suction side.



## CERTIFICATION - CE

Ultra-Control's AGSS standards are CE-1639.

Marked under the Medical Devices Directive 93/42 / EEC with approval from the notified body SGS. According to this directive, specified products are classified as Class IIa Medical Devices.

*Our Medical Systems are really simple and easy to install.*

All major parts are prepared in our factory. All systems are tested and pre-configured before leaving our factory, making work very quick and easy. *For more information, do not hesitate to contact us at any time.*

*Note: All electrical connections and interconnections from our control panel to the respective electrical components are provided with the panel. All wires are properly identified. The control panel offers cable glands suitable for all power cables and alarms.*

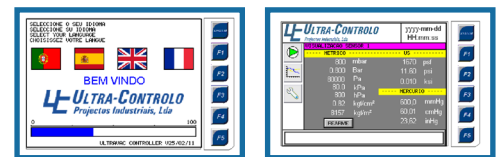
*The factory provides its technicians to check the conditions and maintenance, supervise the installation, commissioning and train the personnel who will operate the medical device, thus ensuring the proper functioning and operation of the equipment.*

**33 years(1987-2020)**

## BENEFITS

*State-of-the-art side channel vacuum pumps;  
German bomb technology;  
Digital reading of the vacuum level;  
Digital low pressure alarm;  
Pre-assembled and ready to connect;  
Highly reliable system.*

## Control panel for Simplex system



## PROVEN QUALITY, YEAR AFTER YEAR

Hundreds of Elmo-Rietschle suction pumps installed in anaesthetic gas scavenging systems healthcare units;  
A thousand of Rietschle vacuum pumps applied in the medical vacuum systems in the portuguese healthcare units;  
The largest vacuum pumps installed in Portuguese hospitals are Rietschle pumps;  
The ULTRASEG has a full warranty of 2 years or 16,000 hours of continuous duty;  
Service Centre certified according to ISO 9001:2015 and EN ISO 13485:2016;

# RAISING THE MEDICAL GASES QUALITY STANDARDS

MODELO	CAPACIDADE m³/h		MOTOR KW		DIF PRESS./ CONEXÕES		PESO SIMPLEX	PESO DUPLEX
	50hz	60hz	3 phase 400V / 380V 50hz 60hz		dP(kPa)	IN/OUT		
H50	50	58	0,55	0,63	23 / 27	1 1/4"	61	112
H65	65	80	0,55	0,63	28 / 34	1 1/4"	62	114
H90	90	105	1,1	1,3	30 / 38	1 1/4"	77	124
H120	120	145	1,5	1,75	31 / 34	1 1/4"	84	138
H170	170	195	2,2	2,55	30 / 32	1 1/4"	89	148
E50	50	60	0,2	0,23	9 / 12	1 1/4"	54	98
E80	79	98	0,4	0,5	12 / 15	1 1/4"	55	100
E100	103	120	0,4	0,5	12 / 15	1 1/4"	56	102
E140	143	174	0,85	0,95	16 / 16	1 1/2"	58	106
E180	180	220	1,3	1,5	18 / 18	1 1/2"	63	116
E200	210	251	1,6	2,05	20 / 22	2"	68	126
E300	315	376	2,2	2,55	19 / 19	2"	72	134

Ex. Duplex: E300D

Dimensions (L x W x H) Simplex: 800x1100x650 mm | Duplex: 1000x1100x650 mm

Motor voltage (V) at 50 Hz: 200 - 240 Δ / 345 - 415 Y

Motor voltage (V) at 60 Hz: 220 - 275 Δ / 380 - 480 Y

Authorized Distributor

We design and build medical gas plants with the desired capacity.

If the required capacity or flow is not listed in the table, contact our Engineering Department.



Tel. +351 21 915 4350  
international@ultra-controlo.com

**ULTRA CONTROLO**