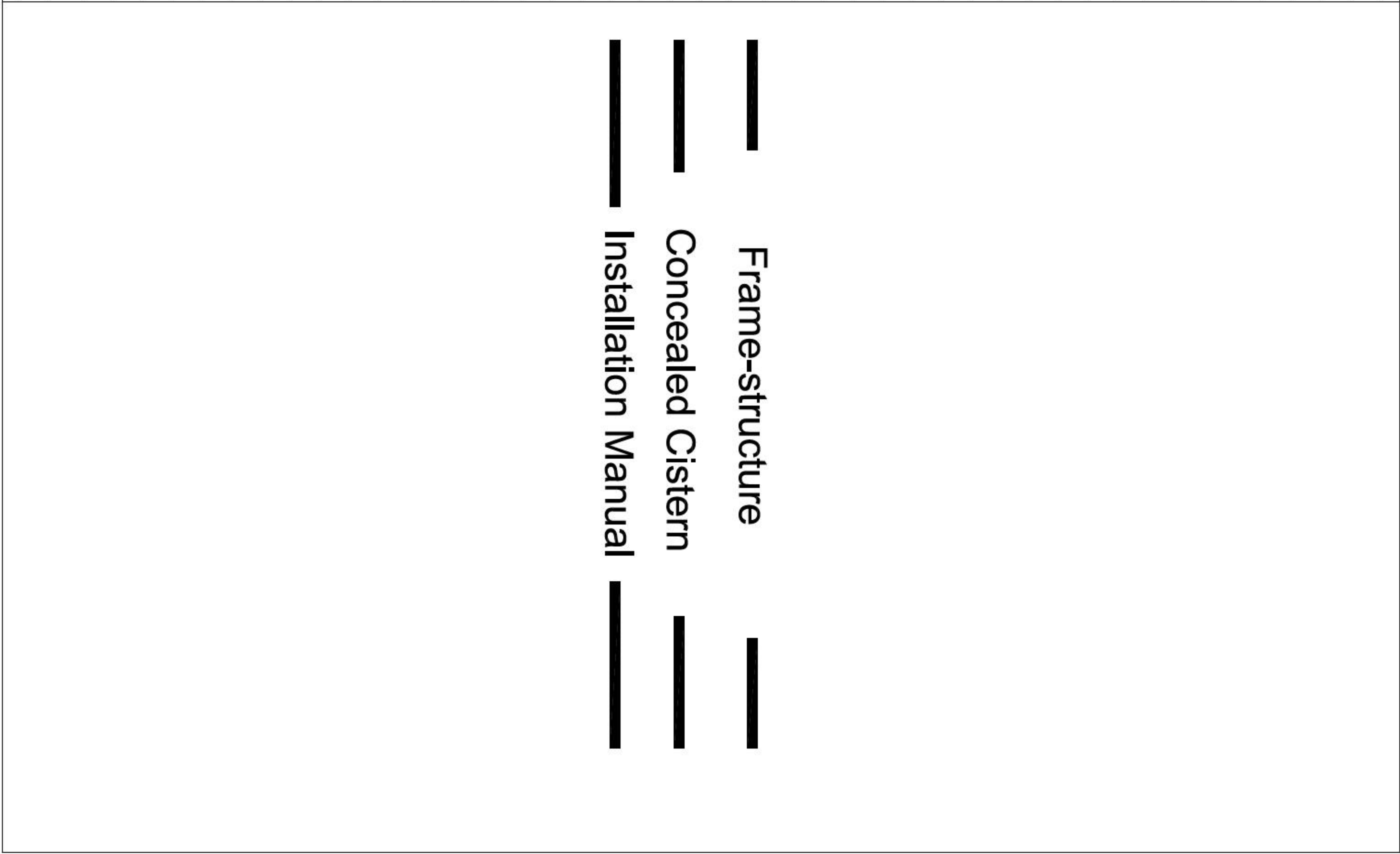
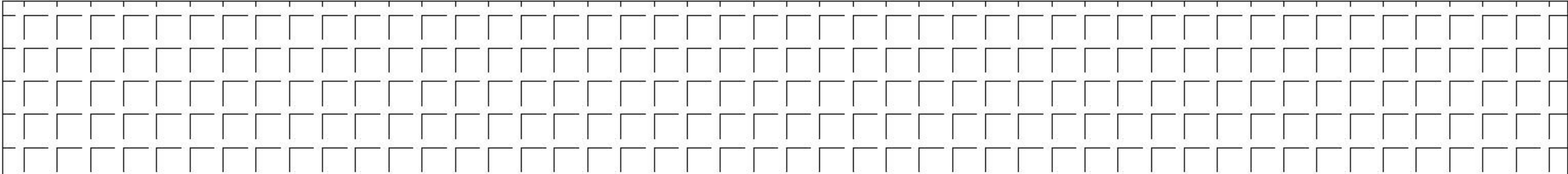
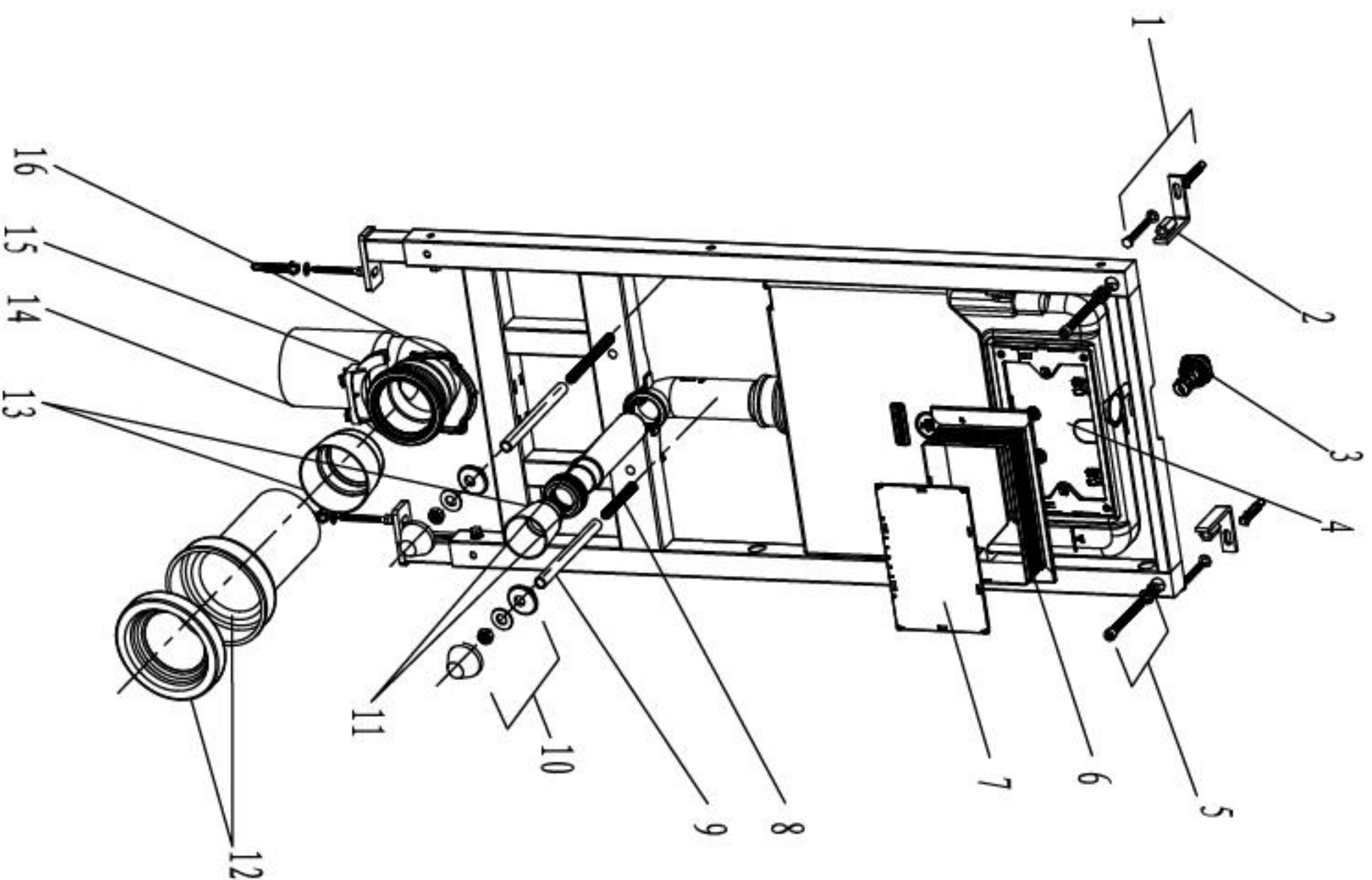




ASGFA3004A001A-1.1



— Frame-structure —  
— Concealed Cistern —  
— Installation Manual —

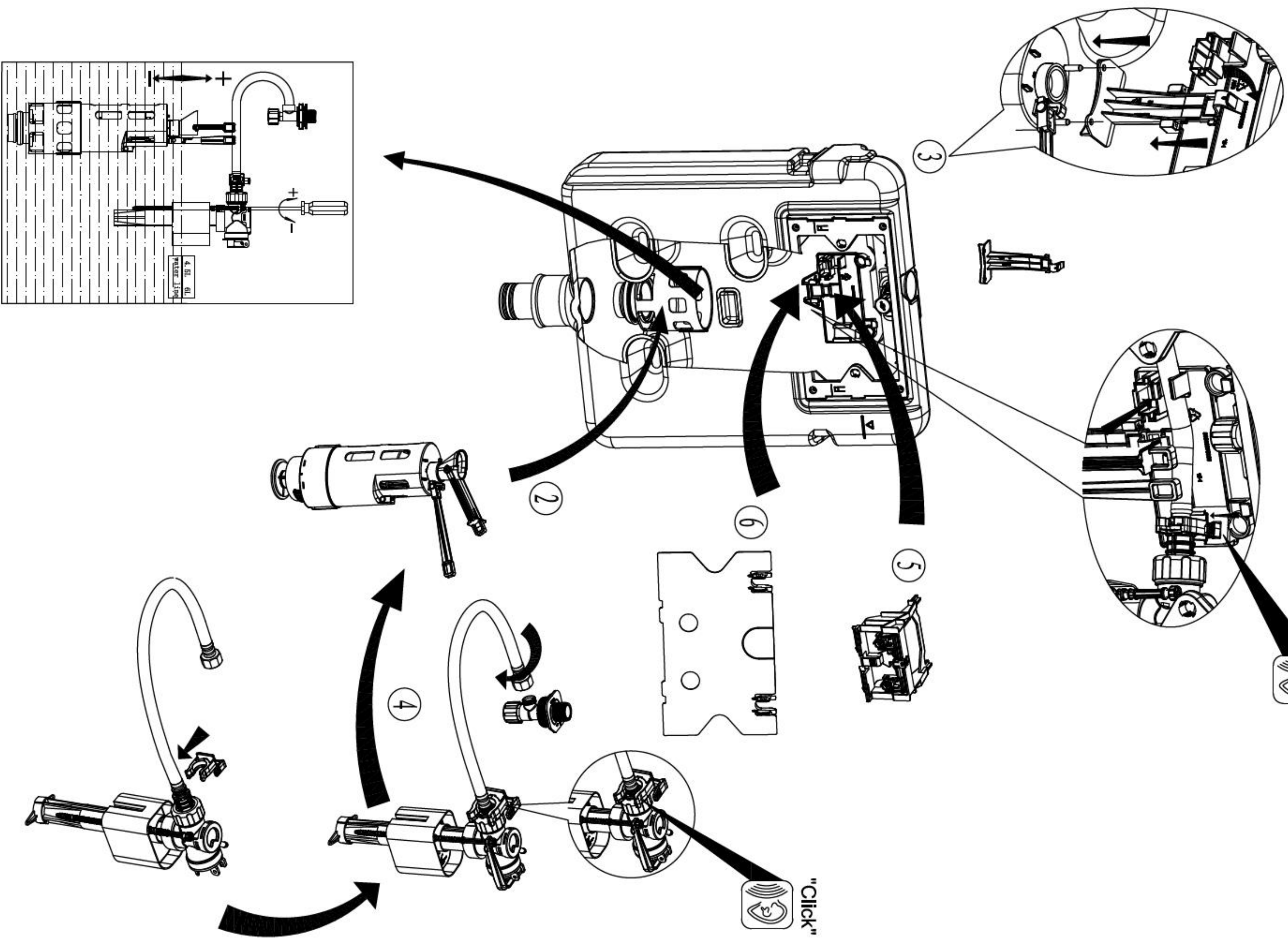


List of main installation accessories

| NO. | Description                     | Qty | Function   |
|-----|---------------------------------|-----|--|
| 1   | Expansion screw                 | 4   | Mounting of frame and wall bracket                             |
| 2   | Wall bracket                    | 2   | Fixation of frame  |
| 3   | Angle valve                     | 1   | Fill valve inlet and shut-off                                  |
| 4   | Cistern cover                   | 1   | Airproof tank and mounting of locking bracket                  |
| 5   | Socker head screw               | 2   | Mounting of frame and locking into wall bracket                |
| 6   | Plastic holder                  | 1   | To reserve space for installation of actuator at wall building |
| 7   | Plastic holder cover            | 1   | To prevent dust and impurities into tank at wall building      |
| 8   | Connecting screw                | 2   | To mount ceramic bowl  |
| 9   | Protective cover                | 2   | To protect connecting screw at wall building                   |
| 10  | Ceramic bowl fixing accessories | 2   | To mount ceramic bowl  |
| 11  | Straight tube                   | 1   | To joint cistern into ceramic bowl                             |
| 12  | Connecting pipe                 | 1   | (cutting in accordance with wall thickness)                    |
| 13  | Piping stopper                  | 2   | To reserve space for straight tube and connecting pipe         |
| 14  | Draining syphon                 | 1   | To discharge liquid and solid waste from ceramic bowl.         |
| 15  | Draining syphon holder          | 1   |  |
| 16  | Mounting bracket                | 1   | To mount draining syphon                                       |



11. Internal flushing mechanism assembly drawing



Important instruction:

1. Please adhere to the following installation instructions. We shall not be responsible for failures and loss that are contributed to improper installation.
2. Please confirm the fixation location of frame prior to installation and obtain the finished floor surface. Draw FFL on installation wall and follow it as baseline from ZERO (0) level.
3. The instructions have been composed based in the latest product specifications. We reserve the right to make modifications to the packaging and specifications without providing prior notification.

NOTES:

1. Mount before bricks building.
2. All size unit in MM.
3. Follow the material product, should there is an unconformity with drawing.

Finished Floor.



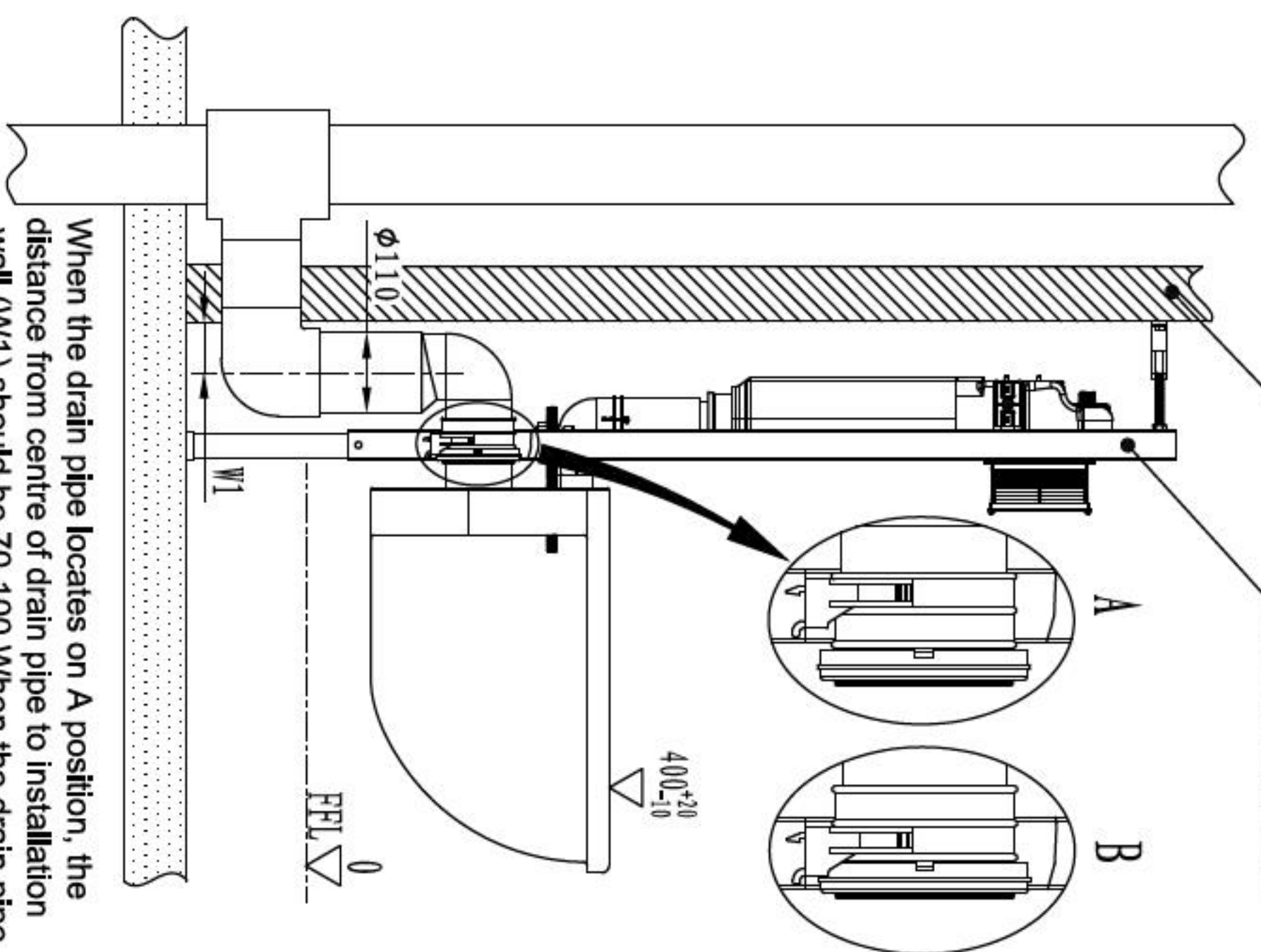
1. Drainage System Layout

Drawing 1 to 3 are three different installation systems for drain pipe. Customer should confirm whichever installation system according to drainage outlet position. If drainage outlet does not fall within the three systems, customer should follow one of three drainage system layout to correspond installation of our concealed cistern.

Option 1

Mounting wall

Mounting frame

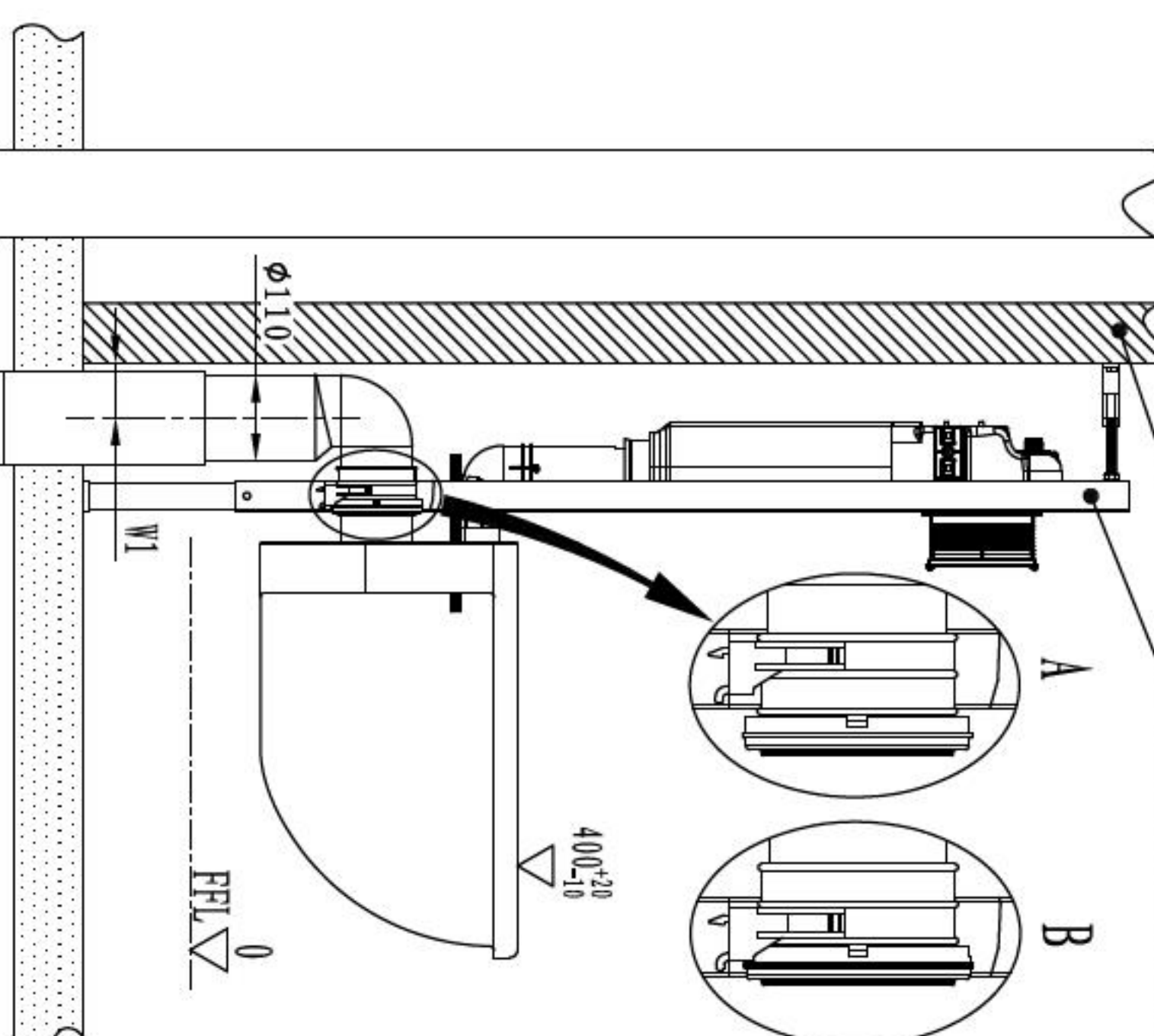


When the drain pipe locates on A position, the distance from centre of drain pipe to installation wall (W1) should be 70-100. When the drain pipe locates on B position, the distance from centre of drain pipe to installation wall (W1) should be 70-80.

Option 2

Mounting wall

Mounting frame

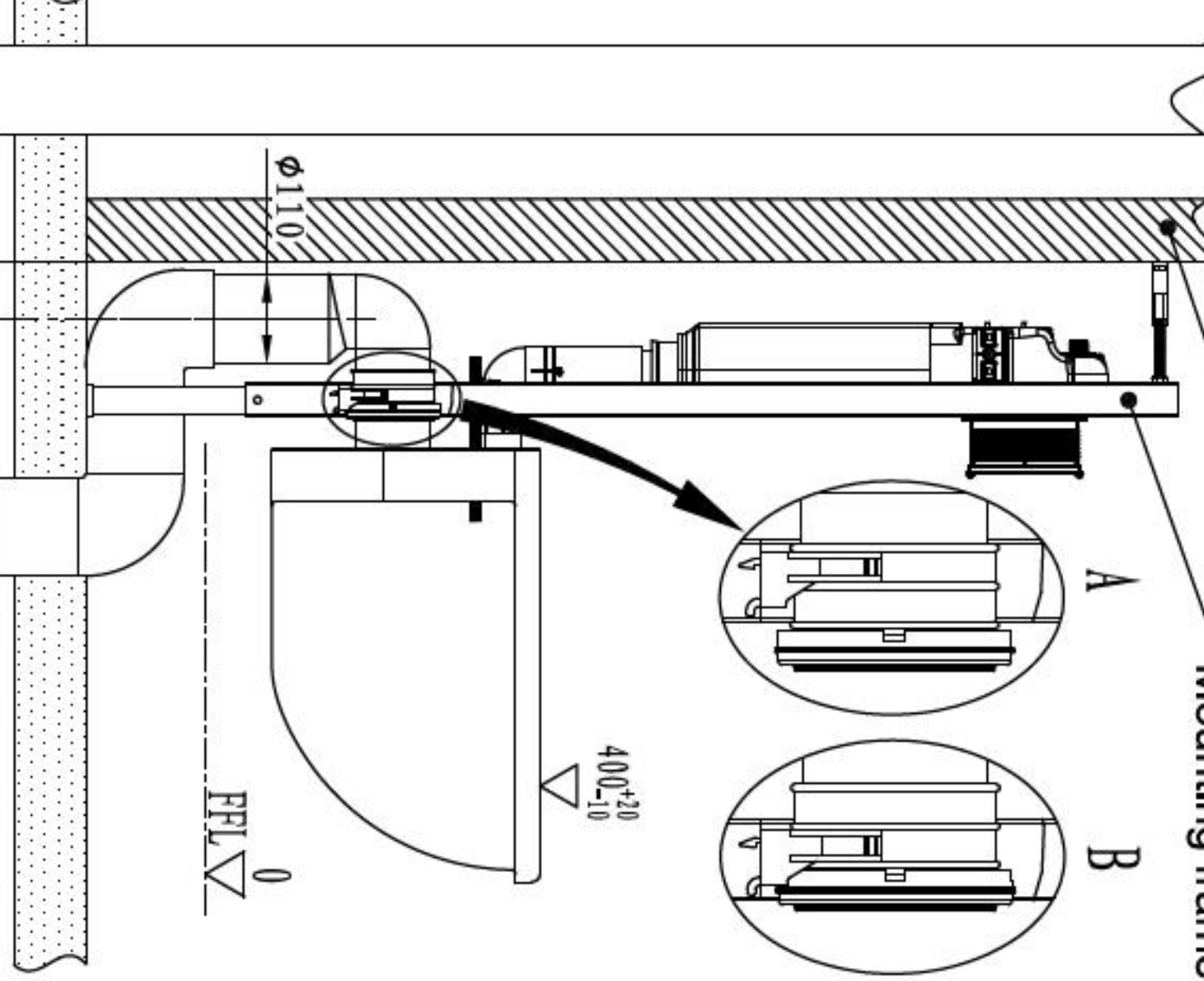


When the drain pipe locates on A position, the distance from centre of drain pipe to installation wall (W1) should be 70-100. When the drain pipe locates on B position, the distance from centre of drain pipe to installation wall (W1) should be 70-80.

Option 3

Mounting wall

Mounting frame



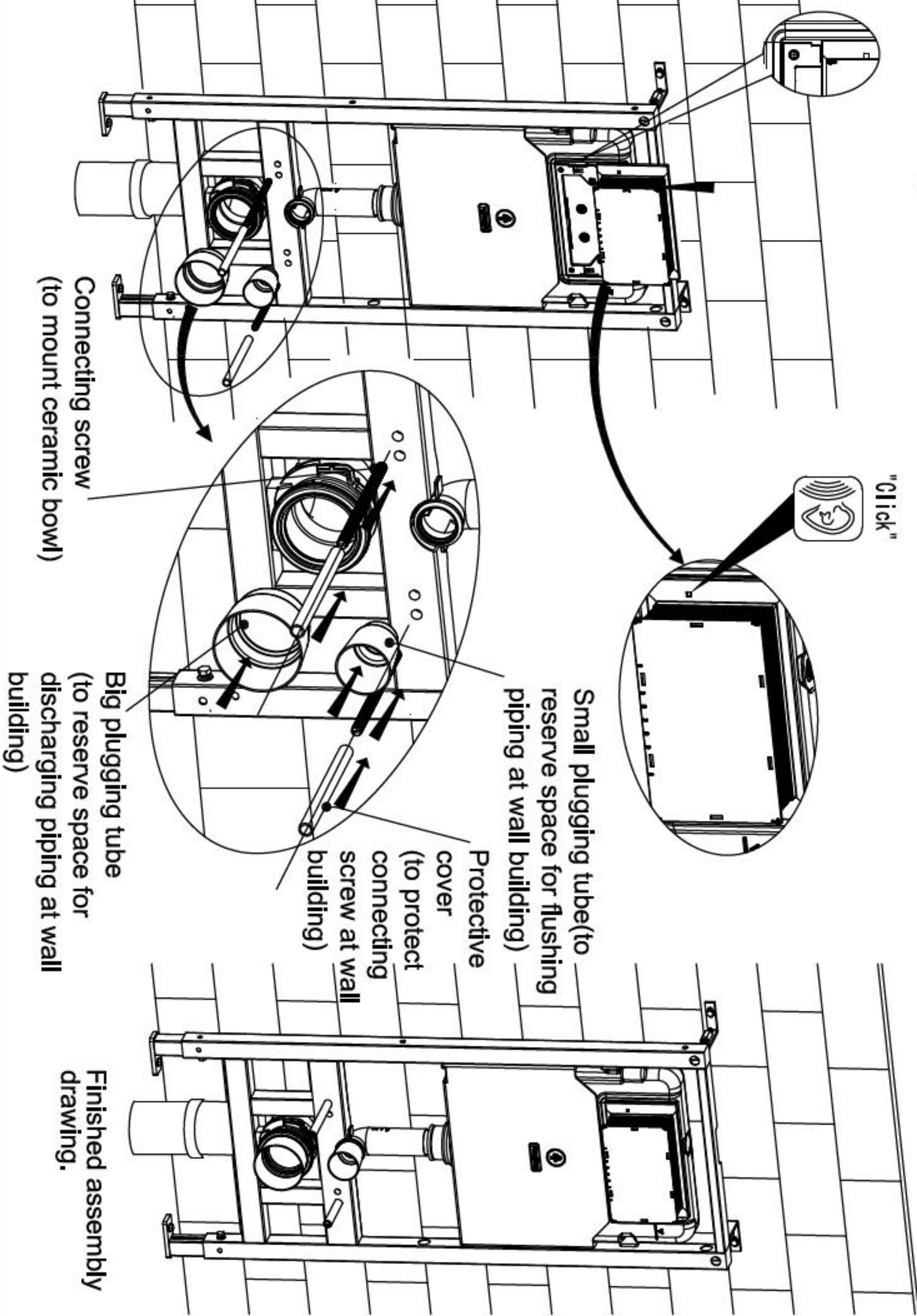
When the drain pipe locates on A position, the distance from centre of drain pipe to installation wall (W1) should be 70-100. When the drain pipe locates on B position, the distance from centre of drain pipe to installation wall (W1) should be 70-80.



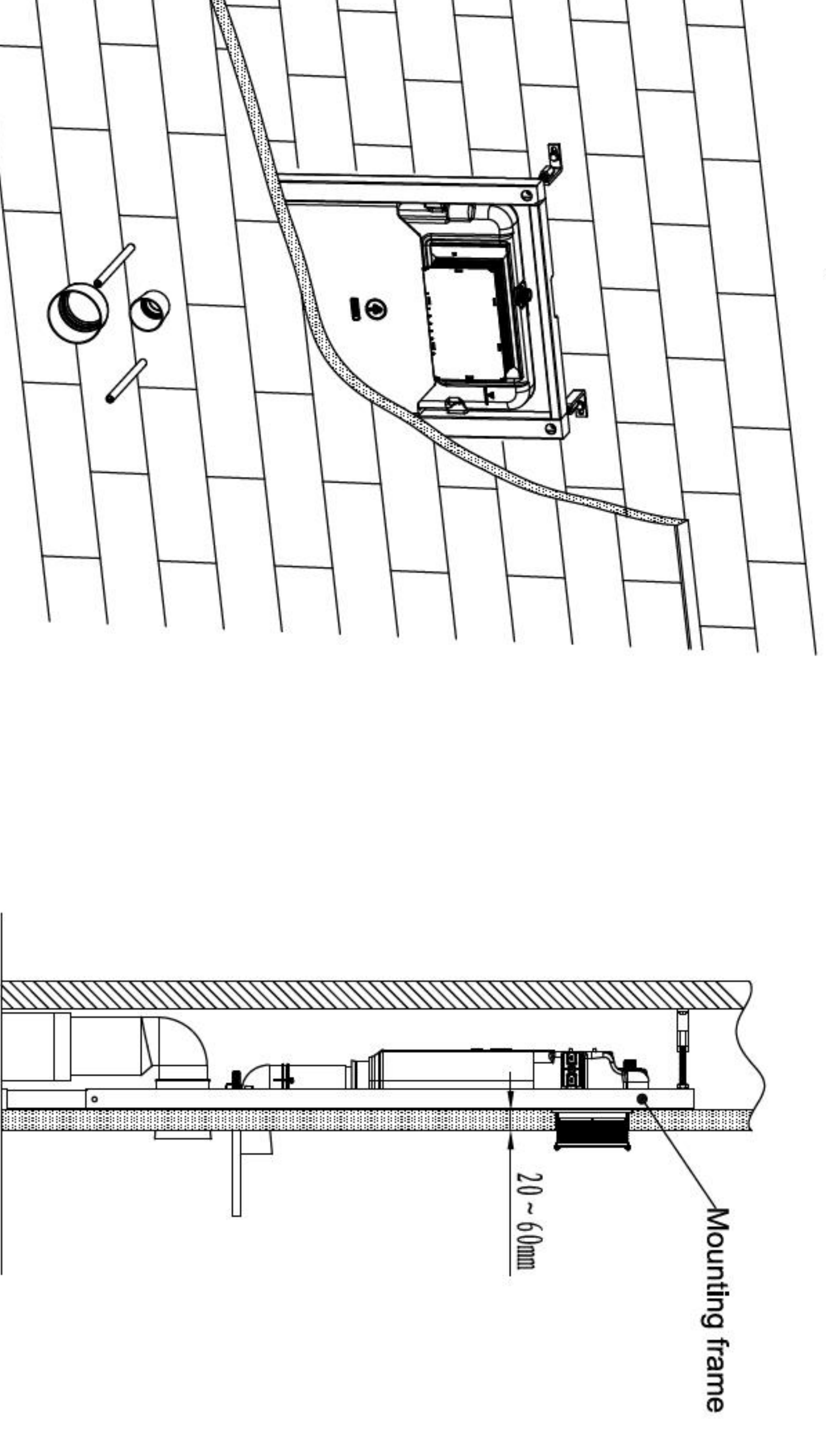




8. Mounting of installation accessories



9. Wall thickness range 20~60mm (from frame outside surface to finished wall)



3. Switch between back water supply and top water supply

☆ Note: In case the back water supply is not feasible in actual installation, switch to top water supply referencing below chart.

