



# EMORY

NELL HODGSON  
WOODRUFF  
SCHOOL OF  
NURSING

Office of  
Nursing Research



## OFFICE OF NURSING RESEARCH SERVICES

[sonnursingresearch@emory.edu](mailto:sonnursingresearch@emory.edu)

## The Office of Nursing Research Team (ONR)

**ONR  
TEAM**

**DW** Drenna Waldrop  
[drenna.waldrop@emory.edu](mailto:drenna.waldrop@emory.edu)

**RN** Rachel Nash  
[rachel.nash@emory.edu](mailto:rachel.nash@emory.edu)

**JA** Jessica Abrams  
[jessica.abrams@emory.edu](mailto:jessica.abrams@emory.edu)

**MH** Melinda Higgins  
[mkhiggi@emory.edu](mailto:mkhiggi@emory.edu)

**RH** Rema Henry  
[rema.j.henry@emory.edu](mailto:rema.j.henry@emory.edu)

**SP** Sudeshna Paul  
[sudeshna.paul@emory.edu](mailto:sudeshna.paul@emory.edu)

**JP** Jordan Pelkmans  
[jpelkma@emory.edu](mailto:jpelkma@emory.edu)

**SS** Sara Saylor  
[sarasaylor@gmail.com](mailto:sarasaylor@gmail.com)

**NP** Nikolay Patrushev  
[nikolay.a.patrushev@emory.edu](mailto:nikolay.a.patrushev@emory.edu)

**WW** Whitney Wharton  
[w.wharton@emory.edu](mailto:w.wharton@emory.edu)

**JE** Jamila Edwards (RAS)  
[jamila.edwards@emory.edu](mailto:jamila.edwards@emory.edu)

**DG** Diana Gutsaeva (RAS)  
[diana.r.gutsaeva@emory.edu](mailto:diana.r.gutsaeva@emory.edu)

**MH** Maleika Huff (RAS)  
[maleika.n.huff@emory.edu](mailto:maleika.n.huff@emory.edu)

**MP** Mariana Popa (RAS)  
[mpopa@emory.edu](mailto:mpopa@emory.edu)

**TJ** Tracy Jones (RAS)  
[tracy.n.jones@emory.edu](mailto:tracy.n.jones@emory.edu)

**TB** Tammy Babitz (RAS)  
[tammy.babitz@emory.edu](mailto:tammy.babitz@emory.edu)

**CH** Charlotte Harmon (RAS)  
[charmo2@emory.edu](mailto:charmo2@emory.edu)

**SW** Shunta Willis (RAS)  
[shunta.willis@emory.edu](mailto:shunta.willis@emory.edu)

**KB** Kara Barinaadaa (RAS)  
[barinaadaa.kara@emory.edu](mailto:barinaadaa.kara@emory.edu)

**KS** Kip Slade (RAS)  
[kenneth.slade@emory.edu](mailto:kenneth.slade@emory.edu)

**CM** Callen Maxwell (RAS)  
[callen.maxwell@emory.edu](mailto:callen.maxwell@emory.edu)

## The Office of Nursing Research Services

The Office of Nursing Research (ONR) mission is to empower faculty and students to advance nursing science to improve health and well being by setting the standard for innovative collaborative scholarship. **The Office of Nursing Research is located in the Nell Hodgson Woodruff School of Nursing, Office 245 & 242**



### Proposal & Budget Planning

**JE TJ CH DG CM**

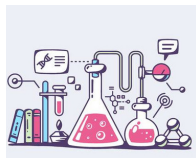
- Proposal Preparation
- Review Proposal Guidelines
- Budget Development
- JIT process management



### Post Award

**MH SW KS MP TB KB**

- Reconciliation & projection of expenses
- Invoicing
- Preparing financial status reports
- Effort pre-certification
- Facilitating award changes
- Financial close out of the award



### Laboratory

**WW NP**

- Consultation on study design, sample preparation and analysis.
- Collection of biological samples
- Storage and inventory biospecimens.
- Analysis of samples using ELISA, PCR using commercially available kits.
- Samples preparation for the Emory core facilities with advanced tools and equipment.
- Samples tests cost estimation for a grant proposal.



### Mock Review

**DW JA**

- Detailed Feedback on Grant Proposals
- Gain Insight on the standard review process
- Contact for scheduling



### Statistics

**MH SP JP**

- Stats w/Proposal Study Design
- Analysis Reporting
- Reproducibility & Riger



### Editorial

**SS**

- Writing Consultations
- Copy Editing
- Draft Review
- Formatting to Agency Guidelines
- Analysis of the content & flow of the proposal
- Manuscript Development



### Data Management

**RH**

- Review Qualitative Data
- Review Data Sharing plans
- RedCap
- Coordinate w/Clinical Study Managers & Statisticians



### ONR General Services

- Research Project Management
- Research Mentoring
- Identification of Funding Opportunities
- Training Workshops
- Resources & Templates
- Dissemination of faculty & student research accomplishments
- Research Communications

## ONR Research Roundtables, & Workshops

The ONR Team members offer research roundtables, and workshops in addition to 1:1 funding opportunity sessions and research mentoring.

Visit the ONR website at [www.nursing.emory.edu/office-of-nursing-research](http://www.nursing.emory.edu/office-of-nursing-research) and/or

Email the ONR at: [sonnursingresearch@emory.edu](mailto:sonnursingresearch@emory.edu) for more information.

**To begin working with the Office of Nursing research, please complete the Proposal Initiation Form <https://redcap.emory.edu/surveys/?s=M7FE4ADH73>**



EMORY

NELL HODGSON  
WOODRUFF  
SCHOOL OF  
NURSING

Office of  
Nursing Research



[sonnursingresearch@emory.edu](mailto:sonnursingresearch@emory.edu)

**OFFICE OF NURSING  
RESEARCH SERVICES**

# Office of Nursing Research (ONR) Special Initiatives

## Research Proposal Incentive Program

The Nell Hodgson Woodruff School of Nursing will provide financial incentives for those faculty, pre-doctoral, or post-doctoral trainees who submit a competitive grant proposal which has been submitted to an external grant agency

## Ongoing Support !!!!

**Research Staff Initiative**

**New Funding Opportunity  
Announcements**

**New Resources & Templates**

**1:1 Foundation Funding  
Opportunity Sessions**

## Upcoming ONR Events

**06/28 - ONR Research  
Roundtable with  
Post Doctoral Fellows**

**07/12 - ONR Research  
Roundtable with  
Dr. Nadine Matthie**

**Fall 2022 - Faculty & Post  
Docs Orientation**

## Get Continued Nursing Education Contact Hours!

Attend ONR Research Roundtables for CNE Contact Hours  
Emory Nursing Experience (ENE), Emory's Nursing Professional Development Center, is a partnership between Emory Healthcare Nursing Education and the Emory Nell Hodgson Woodruff School of Nursing to provide quality, continuing nursing education (CNE) activities that meet learner needs in the dynamic healthcare environment.

The Emory Nursing Professional Development Center (ENPDC) is accredited as a provider of continuing nursing education (CNE) by the American Nurses Credentialing Centers Commission on Accreditation

## Questions?

**The Office of Nursing Research, SON Office 245 & 242**  
**[sonnursingresearch@emory.edu](mailto:sonnursingresearch@emory.edu) | 404.712.9633**