

GRANT TO COMPLETE TRACK

The Lancefield Park Recreation Reserve committee of management is excited that its application for funding to complete the walking track project in the park has been successful.

Committee chairman Syd Green said the committee recently submitted a comprehensive submission to the Department of Environment and Primary Industry, seeking \$35,300 under the Local Landscape Enhancement Grants program.

"We are awaiting confirmation of the amount allocated, and look forward to constructing a 1.2 kilometre extension of the walking track, along with landscape areas.

"The extension will enable locals and visitors to enjoy additional parts of the multi-use park which are not easily accessible for much of the year." Mr Green said.

The local Landcare group, park user groups, Lancefield Neighbourhood House and Friends of the Park are also involved in the project, with a substantial amount of volunteer time and labour involved.

Mr Green said it will be tremendous to have the internal walking track completed, thanks to the welcome grant allocation.

There were plenty of favourable comments about the condition of the park on Lancefield Show Day (October 19).

The park committee congratulates Lancefield Primary School on being successful with its submission to develop an Indigenous Flora and Fauna Corridor from the school grounds to the wetlands area to the north of the men's shed. The school applied for a \$46,000 grant under the LLEG program.



LANCEFIELD & ROMSEY COMMUNITY BANKS

THE DREAM FOR THE **MECHANICS INSTITUTE** CAN NOW COME TRUE



A long-held dream to redevelop and refurbish Lancefield's iconic Mechanics Institute Hall is set to become a reality, with the Lancefield and Romsey Community Bank branches showing their community heart.

The Bank Chair, Tim McCarthy today announced a major \$40,000 grant to help the hall committee realise key components of its master plan.

Mr McCarthy also announced \$14,000 for the Romsey Region CFA to buy a thermal imaging camera, to provide local firefighters with better information about the seat of a blaze by seeing areas of heat through smoke, darkness and barriers.

The Lancefield Mechanics Institute and Romsey Region CFA are just two of the 54 clubs, community groups and a range of other organisations around the district which are sharing in \$142,755 in grants and sponsorships from the Lancefield and Romsey Community Bank branches.

Announcing and presenting the grants and sponsorships at a Community Investment Program function at the Lancefield Hall, Mr McCarthy said the community-owned Bank has now put more than \$730,000 directly into the community over the past 13 years.

"With another \$170,000 already allocated for future community projects through a 'futures fund', our Bank has now earmarked more than \$900,000 for projects of community benefit since we opened our doors," he said.

"This distribution of money demonstrates exactly what

our Community Bank is all about. "Our Romsey and Lancefield community-owned branches of Bendigo Bank were established to serve our towns, both by ensuring we always had local banking services and by our pledge to share the profits and proceeds generated with our communities.

"This latest allocation demonstrates that we have upheld our pledge, and the banking business generated by local residents and companies is also making a direct contribution to funding worthwhile projects and groups.



"By supporting their Bank, they are also proudly supporting the groups receiving these grants and sponsorships."

Mr McCarthy said the grants recognise the hard work done by local volunteers.

"Our funds are making a real difference to our community, by supporting the hard-working and dedicated volunteers such as the members of the hall committee and our local fire brigades," he said.

"Our local brigades did an awesome job in protecting our communities during the summer fires that burnt through thousands of hectares, and the thermal imaging camera will make it easier for them to locate and tackle the seat of any fire.

"The Lancefield Mechanics Institute Hall is an icon of Lancefield and our grant will help update and refurbish the annexe and the kitchen, which the committee identified were crucial projects in improving the building and making it more of a hub for the community.

"We applaud the work that members and volunteers of

our local groups do to make our community a better place to live.

Mr McCarthy said the Lancefield and Romsey Community Bank branches of Bendigo Bank were operated on behalf of around 500 local residents and businesses, who put up their own money to become shareholders.

"The banking service alone is a landmark contribution to the prosperity of our district, yet it is the extra step we take that sets our Bank apart," he said.



T.L. HYATT * Anything Heavy
 * FREE Car & Truck Removals
 * Machinery, Containers & Site Sheds

BREAKDOWN SERVICE

7,000kg TILT

Tom Hyatt:
 Mobile 0418 345 541

Lancefield **FRUIT SHED**
 Fine Food Experiences

FRESH FRUIT & VEGETABLES
 FRESHLY MADE JUICES • LOCAL PRODUCE • DELIVERY

8.30am to 5.30pm Mon - Fri & Sat 9am to 1pm.

"Unlike any other business, our Bank disperses its profits in a truly remarkable way to enhance our lives here in Romsey and Lancefield."

Graeme Walker
Community Banks Board member 0409 237 543.

THIS YEAR'S COMMUNITY BANK SPONSORSHIPS & GRANTS

Community Investment grants
Lancefield Mechanics Institute - Major boost to Master Plan, upgrade entrance of hall, total kitchen refurbishment, redevelopment of annex area \$40,000, Lancefield Tennis & Netball Clubs - Pavilion upgrade Stage 1 of plan \$10,000, Romsey Lancefield RSL Sub Branch - Centenary plaques \$4500, Lancefield Men's Shed - tradesmen trailer to transport tools to schools \$4000, Lancefield Golf Club - updating clubhouse facilities \$2500, Christ Church Anglican Church - upgrade and refurbishment \$2000, Romsey Golf Club - safety and security upgrade \$1600, Romsey Mechanics Institute - replace stage \$1500, Romsey Play Connect-Autism Light It Up Blue Project - creating awareness of autism \$1500, Lancefield Motorcycle Run & Lancefield Neighborhood House - maintenance on BBQ \$1400, Macedon Ranges Lodge 97 - marquee purchase \$1000, St. Mary's Catholic Church Lancefield-Romsey - Instantaneous hot water system \$750, Romsey Playgroup Inc. - membership support for group \$750, Lancefield Country Women's Association - hall fees \$650, Romsey CWA - chef aprons and hats, sheets, table cloths for Romsey Kinder

and trauma teddies \$500, Australian Red Cross-Lancefield Branch - Centenary lunch \$250

Emergency Services grants
Romsey Region CFA - Thermal Imaging camera \$14,000, Lancefield CFA \$1000, Romsey CFA \$1000, Springfield CFA \$1000, Nulla Vale CFA \$1000, Bolinda/Monegeetta CFA \$1000, Clarkefield CFA \$1000, Benloch CFA \$1000, Romsey Lancefield Ambulance Auxiliary \$1000

School Program \$9000 across three schools
Romsey Primary School, St Mary's Primary School, Lancefield Primary School

Sporting and Event Sponsorships \$38,855 - shared between:
Romsey Lancefield Girl Guides, Lancefield & District Pony Club, Lancefield Macedon Ranges Relay for Life event, St Mary's Primary School - Movie Night, Lancefield Golf Club, Romsey Sporting Association, Lancefield Cricket Club, Romsey Kennel Club, Romsey Bowling Club, Lancefield Football Netball Club, Lancefield Romsey Little Athletics, Romsey Community Hub & Play Connect - Mental Health Expo, Romsey Cricket Club, Lancefield Equestrian Group, Lancefield Bowling Club, Romsey Football Netball Club, GRAAP - Grand Community Picnic, Romsey Golf Club, Lancefield Kennel Club, RRBATA - Annual Business Breakfast, Lancefield Agricultural Society - Lancefield Show, Macedon Ranges Vignerons Ass. - Wine dinner, Romsey Play Connect - Light it Up Blue event, Lancefield Neighbourhood House - Christmas Carols Evening in the Park, Lancefield Junior Football Netball Club, Romsey Junior Netball Club TOTAL: \$142,755



LANCEFIELD FIRE BRIGADE

AWARDS PRESENTATIONS

This month I report on the Awards Presentation held at the Fire Station on Sunday 12th October 2014. Firstly a special thank you to the following, Operations Manager Steve Smith, District 2 Headquarters: Operations Officer Trent McKinnon Macedon Ranges Catchment: Fiona Ritchie, District 2 Headquarters and Dorothy Fowler Macedon Ranges Catchment B.A.S.O.

AWARD RECIPIENTS AS FOLLOWS

National Medal Third Clasp Mr S.A. Green, Mr R.D.Green Mr R.M.Williams
Service Awards Five Years Mr P.Shannon
Ten Years Mr M Simmons and Mr S Winks
Fifteen Years Mr J. Gibson and Mr P. Kendray
Twenty Years Mr. K. McMaster
Thirty years Mrs M. Green, Mr S.I.Mustey and Mr. D.Richmond
Fifty Years Mr. B. Hunt
Fifty five Years Mr. I Mustey and Mr. J.McArthy
A great achievement for all those recipients and congratulations all round. Back to the more usual topics next month

Stuart Mustey Captain

ANTIQUES AND COLLECTABLES DISPLAY.

Sunday 9th of November - 9am to 4 pm at the Romsey Mechanics' Institute

An exciting array of antiques and collectables on display.

The day includes: Appraiser on site from 10am - 12pm & 1pm - 3pm. \$5 per item or 3 for \$12. (no jewellery, coins or stamps), Chalk paint demonstration, Jewellery making demonstration and Spinning demonstration

Morning tea available from Romsey CWA, afternoon tea from Romsey Red Cross, Sausage sizzle from Heskett PS.

This is a joint initiative of the Romsey Neighbourhood House and the Romsey Mechanics' Institute.

Gold coin entrance.



LANCEFIELD MERCURY INC.

A0045845D

Items for publication should be sent to editor@lancefieldmercury.org.au"

Advertising should be sent to advertising@lancefieldmercury.org.au

All articles should reach The Mercury by the fifteenth of the month.

Each edition will be distributed by mail in the first week of the month. The Lancefield Mercury is produced by the volunteer committee as a service to the people of Lancefield and surrounding districts.

The editorial committee reserves the right to edit articles for length and clarity.



Editorial Committee:

- Andy Moore
- Craig Longmuir
- Karen Barr
- Meryl Green
- Robert Green
- Kellie Wilson
- Murk Schoen
- Marjorie Dobbs

Views expressed are not necessarily those of the editorial committee.

Advertising Rates:
Full page \$140 1/2 page \$80
1/4 page \$40 Business card \$30

Editorial Enquiries to Andy Moore 0430 448 120

Advertising Enquiries to Kellie Wilson 0438 501 258

www.lancefieldmercury.org.au

The Lancefield Mercury should be delivered to every dwelling which receives a mail delivery from the Lancefield Post Office. The Mercury committee would be keen to make sure that no-one misses out on their monthly copy of the paper. If you have missed out on a copy, either regularly or occasionally, or know someone who has, can you let the editor know at editor@lancefieldmercury.org.au? Thank you.

Give us your books & we'll give you back your life!

Flexible local bookkeeping services tailored for small business

- ATO/BAS compliant
- Bank reconciliations
- GST & BAS requirements
- Payroll, PAYG & superannuation
- Accounts Payable/Receivable
- Profit and loss statements
- Debt management
- Cash flow management

INTRODUCTORY OFFER
call now for your FREE
business appraisal



Call John Chisholm at First Class Accounts - Macedon Ranges • Mobile 0431 599 642
www.firstclassaccounts.com/macedon-ranges

KOSA ARCHITECTS PTY LTD
Architects - Planning - Conciliations

STEPHAN P KOSA | fraia, aiama
Director

P.O. Box 356, Mont Albert, VIC 3127
Melbourne Office: 03 9849 2455
Macedon Ranges: 0412 102 673
skosa@kosaarchitects.com.au
www.kosaarchitects.com.au

JOHN NICHOLLS
Qualified Mechanic

For all your
Mechanical needs

**LANCEFIELD
AUTOMOTIVE**

1 Kilmore Road
Lancefield

Ph: 5429 1414

COMBINED CHURCHES CHRISTMAS TOY SHOP



In past years the Combined Churches of the Macedon Ranges have organised a Christmas "Toy Shop" for families living in the shire who might struggle to afford a Christmas gift for their child. Each year we assist over 100 local families, or over 250 children. As with each year, we anticipate the need to be even greater.

The Toy Shop relies completely on the generosity of our community, to donate gifts to stock the shop. Families are referred to us by local support and welfare agencies and are given a personal invite to attend the shop and pick out toys for their children. As we rely on donated goods, there is no cost to the families for these gifts. We also offer gift wrapping and a cafe style space to enjoy free tea and coffee and home baked goodies.

For families who are facing challenging times, Christmas can become an incredibly stressful, lonely and sad season. Unable to participate in many of the traditions that our culture has come to know as "normal" these families can feel even more isolated and marginalised.

The Toy Shop gives struggling families the opportunity to enjoy what most people take for granted – to choose something special for their child and be able to give it to them on Christmas morning. Many of these families would otherwise be unable to give their child a gift on Christmas morning, and many of these children would miss out on the joy of opening a gift that is just for them.

For our community, the Toy Shop is a fantastic opportunity for local people to embrace the true Christmas spirit, and reach out in generosity and love to those in their

own community who are facing a tough time. Whether you are an individual or a business, you can get into the Christmas spirit and give some joy to local people who really need it.

The toy shop relies 100% on the goodwill and generosity of our community. We need your donations to make this important initiative possible. We require donations of toys for boys and girls aged 0-18. Gifts need to be new and valued around \$20. We also welcome donations of books, plus toys and smaller items that would be suitable as stocking fillers. We particularly fall short in gifts, books and stocking fillers for older children each year.

How to Donate:

The Uniting Church and Target Woodend are again running "Operation Santa" and have kindly agreed to donate all gifts to the Toy Shop. Members of the public can donate by leaving a gift at the tree located in Target Country Woodend.

Donations will also be received at the offices of Cobaw Community Health in Kyneton and Woodend

Contact Georgina Harvey (0404442891) directly to arrange pick up of donations

Donations of both gifts and money will be gratefully received. All financial donations will only be used to purchase toys to stock the shop. Gifts need to be received by Monday 15th December to allow time for sorting and setting up of the toy shop.

All Enquiries: Georgina Harvey (0404442891).

STAYING SAFE THIS FIRE SEASON

BE READY FOR THE COMING SEASON

Grass fires in the shire in January and February this year reminded us that fires are a natural part of our environment. Last season, firefighters from across the state responded to more than 4,600 bush and grass fires over a five month period.

PREVENTING BUSH AND GRASSFIRES

However, an estimated 82% of fires are deliberately lit or caused by recklessness, and could have been prevented. This fire season, Police will have dedicated marked vehicles patrolling high fire danger areas on high risk days.

To make sure you aren't engaging in activity that could accidentally start a fire, refer to the CFA's "Can I Can't I brochure" by visiting www.cfa.vic.gov.au.

Preventing bush and grass fires is everyone's responsibility.

SHARING INFORMATION WITH NEIGHBOURS, FAMILY AND FRIENDS

Now is the time to start preparing yourself and your property for the fire season. Start by talking to your family and neighbours about your plans.

What are you going to do if a fire comes? Will you stay or leave? How can you help each other to be prepared?

Do what you can to support older or vulnerable neighbours, and help each other clean up your properties.

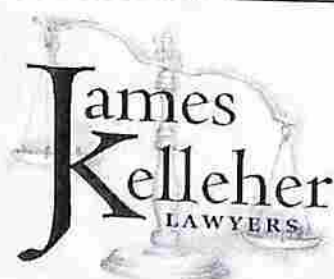
PREPARING YOUR BUSHFIRE PLAN

Understanding your level of risk is the first step in developing your Bushfire Survival Plan. Research shows that when threatened by a fire, many people living in high risk areas will leave it too late to make critical decisions, leaving them with very few safe options. In high-risk areas, leaving early is your safest option—particularly on Code Red, Extreme and Severe days. Like the "Macedon Ranges Emergency Alerts" Facebook page Don't forget to "like" and "share" Council's Emergency Alerts Facebook page at facebook.com/MacedonRangesEmergencyAlerts to keep up with important local information regarding emergencies in our shire.

This page kept thousands of people up-to-date during the February fires. We have more than 3,000 "likes" but would like to see this grow so that we can keep an even greater number of people informed and help them prepare for, respond to and recover from all types of emergencies.

FEELING ANXIOUS?

We know that many people will be feeling uneasy in the lead up to this fire season, particularly those who were affected by the fires last summer. Fire-affected residents are still eligible to access free counselling services by calling our Recovery Officer on (03) 5422 0333. If you have concerns about someone else, you can make a confidential referral and we will organise a friendly visit from someone who is trained and experienced in assisting people who are recovering from traumatic events.



'For the right outcomes'

Maureen P. Wiltshire B.A., LL.B.
Masters of Applied Law (Family Law)

75 Main Street, Romsey 3434
Ph. (03) 54295292
www.jameskelleher.com.au

James Kelleher Lawyers has been providing clients with legal expertise for over 25 years. We offer specialised services in many fields including:-

- * Family Law
- * Conveyancing
- * Wills & Probate
- * Business & Commercial matters
- * Litigation and more...

It's all about you



Funerals mean different things to different people which is why we listen to what you want. Be cared for and supported in your decisions, let us help make it easier for you and your loved ones.

Kyneton 54226455 Gisborne 54284155
Sunbry 97409222
www.tjscottandson.com.au

75 years of care in Lancefield & the Macedon Ranges

FROSTS SAWMILL TIMBER & BUILDING SUPPLIES PTY LTD



For all your fencing needs. We are the one stop shop. Post & Rail, Wire, Paling or Electric.



OPEN MON-FRI 8AM-5PM SAT 8.30AM-2.30PM
PH 5428 5156 FAX 5428 5144
8 SAWMILL LANE MONEGETTA



RAISING AWARENESS FOR MENTAL HEALTH AT L.P.S

Our teachers have been participating in professional learning to further understand what contributes to children's mental health and wellbeing and how we can continue to enhance our school's practices and embed a whole-school approach to social and emotional learning across the school community.

Our school focus is teaching students the social and emotional skills they need to be effective in life. Students that are emotionally competent achieve higher outcomes in their day to day lives and academically.

SOCIAL AND EMOTIONAL SKILLS

A list of some of the underpinning social and emotional skills that we teach our students include:

being happy, flexible thinking, self esteem, standing up for themselves, having friends, positive thinking

The Five Social and Emotional Competencies being friendly, having resiliency, managing anger, being helpful, resisting peer pressure.



L.P.S HAT DAY

Our student leadership group – the KidsMatter Action Team held Hat Day to help shine a light on mental health and help develop healthy hearts and healthy minds and also raise money towards research into mental health.

MP HAS THE LAST WORD

Dear Friends,

As you know, I am retiring in November

It has been an honour and a privilege to represent the people of the Macedon Ranges. This is a community of wonderful people, active and full of energy, innovation and belief.

Thank you for your support and co-operation. There have been many memorable moments and wonderful people that have provided me with insight and help over the past years (on both sides of the political divide). Without your help I couldn't have made it to this day.

Together we have accomplished a lot since 1999 and there have been many people who have assisted in making changes for the better in our electorate. We rebuilt the Kyneton hospital, returned the Wombat Forest to sustainable logging, delivered natural gas to seven towns and built new CFA, SES and Police stations and schools.

We rebuilt country rail and introduced new rolling

stock specially designed to be accessible for all people. Just a few of our achievements and too many to list here.

None of this would have been possible were it not for the commitment of so many community groups and volunteers. Please don't think any of your work has gone unnoticed.

Even though there will be much I will miss, I am looking forward to starting a new phase of my life which hopefully will be a bit more relaxed, with time to catch up with friends and family and perhaps to pursue some new challenges down the track.

Good bye and good luck
Warm regards
Joanne



"Magnificent" Art

New show every month

MAD Gallery & Café

Open every day 10:00am – 5:00pm

We're proud of our coffee and promise you the best coffee around, or your money back!

19 High Street, Lancefield Tel: 5429 1432

Web: www.madgallery.com.au

Hay Contracting and Transport



Shanash

Hay Contracting

Rake
Mower
Mower Conditioner
Round Bales
Square Bales

Machinery Repairs

Welding
Mechanical Repairs

48ft Drop Deck Trailer

Hay Cartage
Machinery Transport

Trenching also available

Paul Mustey

0432 127 630

shanash.industries@gmail.com

JOANNE DUNCAN MP

ADVERTISEMENT

MEMBER FOR MACEDON

As your local Member of Parliament I am keen to listen to any concerns or ideas you may have.

Please don't hesitate to contact me for assistance on any State Government matter.

Warm regards,
Joanne Duncan

Shop 14/9 Goode St, Gisborne VIC 3437

P: 5428 2138 F: 5428 2919

E: joanne.duncan@parliament.vic.gov.au

www.joanneduncan.com.au



Authorised by J.Duncan, Shop 14/9 Goode St, Gisborne

LANCEFIELD NEIGHBOURHOOD HOUSE MEN'S SHED

THE SHED HAS HAD A BUSY FEW MONTHS

The Shed has had a busy few months since our last article in this great local newspaper!

The best news was the grant from the Bendigo Community Bank to continue with our 'Kids in Sheds' program. To date we have had extended visits from Lancefield Primary School and St Mary's Primary School and we have now commenced working with Year 5 students from Romsey Primary school. The feedback from the students and the community has been very supportive and encouraging and to be able to continue as a result of this grant is fantastic! We will invest in a trailer and tools to take 'the Shed' to the kids as well as to continue with the local programs.

A BIG thankyou to the bank!!! Thankyou, also, to the men who support this program and who provide great role models to the students who participate.

Then... on October 10th we were very pleased to accept a grant from the State Government to extend our shed to include a welding and metal work section. This is a most

welcome addition to the activities of the men at the shed and will enable us to learn still more from our talented members.

All this is as a result of the hard work of our Secretary, Mario, who prepared the applications for these grants - no small task, and for this we all thank him!!

By the time you read this, we will have been at the Lancefield Show where we will once again demonstrate our folding table and bench seats combo, which is the major prize in our end of year Raffle. Tickets are still available.

We continue to meet each Wednesday for our social lunch and chat, and to carry out the quieter tasks such as painting and sanding. The real 'works' happen on Tuesdays and Thursdays from 10am until 4pm, so please feel free to join us to find out about the work of the shed - all new members are welcome. Call Graham on 5429 1051 or just call in!

GRASS SLASHING

Prepare for the Fire Season

10Ft Heavy Duty Slasher

100 H.P. Tractor

Large or Small Blocks

Phone Rick Selleck - Lancefield

5429 1459 Mbl 0428 505 098



**SPIFFY'S
PLUMBING &
IRRIGATION**
ABN 63 395 952 775
Domestic and Commercial

Ask about
Discount Local Rates

**For all your General
and Green Plumbing needs**

Domestic Maintenance
Rainwater Tanks
Toilet/Rainwater Connections
Water-wise Gardens
Small Commercial
Solar Hot Water
Bathrooms
Drainage

M 0413 882 542

F 03 5429 1173

simonspiff@gmail.com

LIC 45660

HYATT RESTORATION

* Body Building * Panel Beating

* Spray Painting

* Replacement Panels

* Rust Removal

ALL TYPES OF CUSTOM WORK

Car, Truck, Horse Floats etc.

Tom Hyatt: Mobile 0418 345 541



VANESSA'S GARDEN

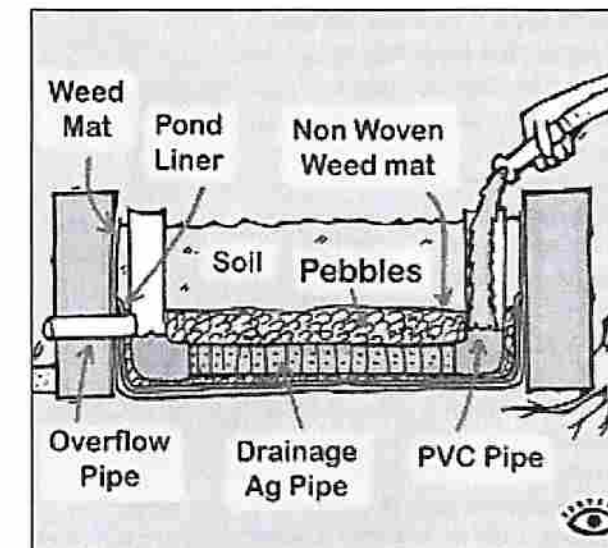
WICKING BEDS

The Powers that Be (PTBs) are still saying we may well have a dry summer so how can you get yourself a bumper veggie harvest while conserving water?

The answer is one or more wicking beds. These are raised beds that have a water reservoir in the bottom. The water 'wicks' up from below which makes sure it gets to the roots first rather than having to make its way down from the top and partly evaporating in the process.

A quick Google search yielded no ready-made wicking bed kits but they are fairly easy to make because they are just self-watering pots on a grand scale. You can use a plastic tub, a prefab raised bed container or simply nail together a sturdy wooden box. The key thing is to line the bottom and of course to waterproof the whole thing. Any waterproof lining will do such as thick black plastic or pond liner.

You'll need some short bits of PVC pipe, a small section of pipe for an overflow, scoria or pebbles for the reservoir, a bit of geotextile or shadecloth to cover the reservoir to stop the soil getting in and gumming up the works and of course some really good topsoil that's full of good organic matter. Good quality topsoil is vital or the wicking process won't work properly. A depth of about 30 cm should be enough. It takes about a week for the process to fully permeate the soil so for the first few days you will need to



encourage things with the watering can.

Now what goes where? I'm going to cheat slightly this month because Urban Food Garden has some good articles on wicking beds. So have a look at www.urbanfoodgarden.org/main/wicking-beds, where you will find this diagram and helpful instructions for beds the writer has made and tested, both wooden and plastic.



CJ BROMLEY
Electrical & Data
Contractor.

Servicing Romsey & Surrounds for 9 Years.
Family Run Business.

We Pride Ourselves with Prompt, Professional
Honest & Neat Service.

For All Your Electrical Needs - No Job To Small.
New Installations, Upgrades & Extensions.
Garage Light & Power, Safety Switches Etc..
Advice on Energy Efficiency.

0419 580 380

(03) 5429 5938

LANCEFIELD MOBILE COOLROOM HIRE

- | | |
|-------------|------------|
| • Daily | Phone |
| • Weekends | 54291827 |
| • Long Term | 0418587272 |



As part of a 200 store network nationwide, Lee's Carpet Court can help you choose the perfect flooring and window solutions for your home & business.

82 Sydney St, Kilmore
Ph: 5782 1788

www.carpetcourt.com.au

**AUSTRALIA'S LARGEST
FLOORING RETAILER**

carpet • timber • vinyl • bamboo • laminate • blinds • overlocking

LEE'S
CARPET COURT

FLOORING CENTRE

RELAY CAPTAINS HAVE A CUPPA

The Lancefield/Macedon Ranges Relay For Life committee is hosting an afternoon tea for team captains and prospective new teams.

Captains, or team representatives, are invited to the Lancefield Corner Store at 2pm on Sunday, November 16.

The new Relay For Life website will be explored and teams will be shown how to best use it to help raise funds for the Cancer Council Victoria. Registrations will also be taken on the day.

Any team with a representative at the meeting will



go into a draw for a marquee donated by Riddells Creek Party Hire to be set up (and packed up) on the weekend of the Relay. As a further incentive, teams will be given one chance at winning for every team member they have registered.

The 2015 Lancefield/Macedon Ranges Relay For Life is on the weekend of February 28-March 1. Register as an individual or a team online at www.relayforlife.org.au and search for Lancefield, or ring 1300 65 65 85.

FUN NOVEMBER IN THE MACEDON RANGES

Instead of that crazy idea of catching up with family and friends in December, try doing this in November this year. You will have fun and be so much more relaxed.

Let the party begin at the Kyneton Cup on November 5th, enjoy watching these beautiful creatures, while you and the horses compete for fabulous prize money. This is the most picturesque and accessible race course with an entrance fee of \$25, either dine in a marquee under the majestic trees, or picnic on the sunny lawns. Dress to impress and enter "fashions on the field", or just watch this to make your own judgement on the winning outfit. Enjoy a truly wonderful day out with trains and buses servicing the course, providing carefree access for patrons. kdrc@countryracing.com.au or www.countryracing.com.au

THE BIG PARTY

November 8th, the Rolling Stones concert at Hanging Rock with local produce, wines and a fabulous day and night of

music. www.ticketmaster.com.au/Hanging-Rock-Reserve-tickets

Budburst Wine and Food Festival is on November 15th and 16th with 20 wineries participating at 14 different locations so you can enjoy the variety of wines produced here in the Macedon Ranges, and these are accompanied with food and music. There are special dinners and deals on offer. Tickets are \$15 which buys you that special tasting glass to be used at all the venues. www.macedonrangeswine.com.au/budburst-festival/

Explore and discover the creative artists of this region over the first three weekends in November with 30 artists opening their studios. Begin this experience at St Paul's Church Hall, entered through St Paul's Park in Piper Street, Kyneton. Pick up the catalogue to direct you to all those wonderful artists' studios or take the bus tours that leave twice daily. www.dmropenstudios.com.au

For information on all these events and more: www.visitmacedonranges.com.au



SAPPHIRE HAIRDRESSING

FOR ALL YOUR FAMILY'S HAIRDRESSING NEEDS

Specialising in all the latest styles and colour trends

for men, women and children

AFFINAGE PROFESSIONAL

BIOLOGAGE

Trading Hours
 Tuesday - 9am - 5:30pm
 Wednesday - 9am - 5:30pm
 Thursday - 9am - 9pm
 Friday - 9am - 5:30pm
 Saturday - 9am - 3pm
 Closed Sunday & Monday

84 MAIN STREET, ROMSEY
PH: 5429 5300



Hammond Constructions
 Building. Better.

Scott Hammond
 Director

M 0407 887 950
 E scott@hammondconstructions.com.au
 F 5429 2579
 PO Box 484, Romsey Victoria 3434
www.hammondconstructions.com.au

MACEDON RANGES SCREENS & BLINDS

- * ALUMINIUM SHUTTERS
 - * SECURITY GRILLS
 - * SECURITY DOORS
 - * INTERIOR BLINDS
 - * FLY SCREENS
- PH: 54 284 733

VIP Pest Control

Over 40 Years Experience

Member Australian Environmental Pest Managers Association
SPECIALISING IN TERMITE CONTROL
PRE-PURCHASE TERMITE INSPECTIONS

Marc Lelia
 MOBILE: 0408 564 250

AREA MANAGER - MACEDON TO BENDIGO
 Freecall 1800 198 041
 P.O. Box 174, Kilsyth Vic. 3137 www.vippestcontrol.com.au

COLINS PROPERTY SERVICES

ABN 50 510 045 498
PH 54 291007 MOB 0409 444712

CARPENTRY CABINETS TILING
 PLASTER REPAIRS PAINTING
 WINDOW CLEANING
 FLUE & CHIMNEY CLEANING
 MOWING BRUSHCUTTING
 ALL GENERAL MAINTENANCE

LANCEFIELD MY NEW LANDSCAPE

When I first bought my 'renovator's delight' in Lancefield a few months ago, naturally my family and friends asked why I chose Lancefield. Some thought I should go to Bendigo, Ballarat or Geelong, larger regional cities, but no, Lancefield it was. At the end of the day I liked Lancefield for its convenience and conviviality. Lancefield is close enough to Carlton and the city to travel there regularly by car, bus or train; and Lancefield seemed a nice place! I liked the wide open main street, the feeling of country, the small number of shops, the chooks running over the road on a Saturday and just the feel of the place! But it was a leap in the dark because I knew no-one here. But this was my new life. I had wanted to live in the country for decades and now I had the chance so I bought a 3-bedroom house on a block with enough garden to make the development of it a five-year plan. What a landscape it is: the view of the cows in the paddock across the road really makes it country and I find it very comforting. I watch the cows being rotated around the different paddocks and love it when they come close to the fence across the road and I hear them at night. Coming from a two-bedroom unit in Box Hill North I wanted garden and chooks – the cows [and I call them my cows] are a bonus.

Before I could begin to think about doing anything about the garden I had to renovate. Nothing in this house worked. Literally! The toilet and bath weren't connected, the aerial wasn't connected; although it was still under warranty, the split system wasn't connected properly so, not only did it not work, it was not covered by the warranty! The first three days at the end of April were literally freezing in the house. The dishwasher and rangehood didn't work – the list goes on. Renovations have occupied most of the last four months and it is only now that I can get into the garden and enjoy my new physical landscape. Renovating is a great way to meet and talk to people – I've enjoyed chatting to various tradies who all have a story to tell. I've become a member of the Romsey Region Women's Network where each month I meet a range of women and feel I'm beginning to make friends here. I look forward to getting involved in other community activities, and I read in the local paper about the interests and concerns of locals. I am enjoying my new space, the physical and social environment and look forward to many years in my new landscape.

Fay Woodhouse

MACEDON GRAMMAR

This term at Macedon Grammar is off to a flying start, the year 8 students went to the Live4Life celebrations at Braemar College in the first week back and came back with many awards. Congratulations to Alex for winning overall individual entry. Lillian, Clare, Karli, Whitney, Peta and Natalie also won awards!! And thank you to the Year 9 and 10 crews for helping out in Live4Life 2014. The year 12 IB exams are fast approaching, the students are thoroughly preparing for those. Year 7-10 exams are coming up later in the term. Parent teacher interviews were held and much feedback was given to students. The year 7 and 8 soft ball teams are going to a competition in a few weeks and are practicing a lot. We are very honoured to have our state MP Lisa Chesters coming to give the High school students certificates for going to Canberra for camp. And the lucky Year 2-3s had their late night camp at school and were very excited for the night ahead. Macedon Grammar students are loving being at school and enjoying the amazing opportunities and education they are receiving, it's a great place to learn!

Christina Carlyle Year 8 student



LANCEFIELD UNITED CHURCH High Street Lancefield.

NOVEMBER SERVICE TIMES

Worship at 10.30 am each Sunday, followed by morning tea. Sunday School is also at 10.30 am.

DECEMBER SERVICE TIMES

January: Combined services with Romsey Uniting Church at 10.00 am. Services alternate between the two churches.

HOLY COMMUNION

On the second Sunday of each month.

OPEN CHURCH

The Church is open for private prayer and meditation every Wednesday between 11.00 am and 3.00 pm.

THE CLASSICAL MUSIC GROUP

Meets every second Tuesday from 2.00 pm to 4.00 pm, and extends a warm welcome to all.

Church Secretary: Ian Kennedy 5429 1727 or 0412 820 397

FIELD STORE

Jewellery
Clothing
Shoes
Bags
Gifts
Home wares
Elk
Linogirl
Robert Gordon
& More Gorgeous Things

WEDNESDAY - SUNDAY
10am - 4pm
24B High Street
5429 2591

Cocky Mowing & Slashing



Ride-On Mowing

Block & Paddock Slashing (Tractor)

Peter 0439 534 517

25 years' experience

Email: p.phantom45@gmail.com

Cocky Enterprises ABN: 67539112938

John's Home & Garden Maintenance

Professional! Reliable! Affordable!

- ❖ Mowing/edging
- ❖ Mulching
- ❖ Pruning/Weeding
- ❖ Rubbish removal
- ❖ Painting
- ❖ Gutters
- ❖ Home maintenance

Any Odd Job Free quote

Fully Insured Workcare Registered

Gift Certificates Available

Phone Now: 0409094746

Johncfar@gmail.com

ABN: 9950948145



RED DOOR BOOKS OF LANCEFIELD
ABN 13 820 446 329

John Webb & Emma Stevens

34 High Street, Lancefield 3435
(03) 54292566 fax(03) 5429 2577
reddoorbooks@bigpond.com

EXQUISITE BLOOMS



at the Lancefield Fruit Shed
Fresh Flowers made to order
Posies Bouquets Boxes



FLOWERS

For all Occasions
Delivery Available
For orders ring 54291969



Opening Hours
Mon - Fri 9am till 5.30pm
Sat 9am till 1pm

WEATHER COMMENT

I have been reminded that I neglected to mention Toby in my last article, so I will start with his goings on during the month. He has been out to the shearing shed and has had his yearly fleece removal. Together with the rest of the sheep he spent two nights out there in their company and at one stage we were going to leave him with them but we relented and brought him back home and I don't think he stopped eating all next day. The sheep shorn very well and cut a shade over 4kg per head all inclusive, a very pleasing result.

Rainfall is the next topic to report on, we have measured a total of 52mm since my last article and it has proved useful for pasture growth but is not an exceptional total for this time of the year, so we are still looking for more to fall in the immediate future to ensure feed to carry us through the summer and provide a useful hay yield. The cattle are losing their winter coat but with the cold spells we have been getting they may not be too happy for that to occur.

Our garden is now a blaze of colour with bulbs and the flowering shrubs doing their bit to brighten up the place, the grass needs attention from the mower now and again to keep the area tidy. The vegie plot now has silver beet, red beet, onions and parsley growing at present and we plan to improve on that in the near future. With a touch of frost still in the air there are some vegies that we are reluctant to plant at the moment, it should warm up soon.

Robert Green

AUSTRALIAN RED CROSS -
LANCEFIELD BRANCH.MANY
THANKS

The Lancefield Branch would like to thank the Lancefield Community Bank for the grant that enabled us to hold a most successful luncheon to celebrate the Centenary of Australian Red Cross.

We also would like to thank the Macedon Ranges Shire Council for arranging the planting of two Centenary Red Cross Roses on the Rose Garden on the corner of Dundas Street in memory of two past Red Cross members, Mrs Hilda Gallpen and Mrs June Martin, both long time volunteers with Lancefield Red Cross.

Jean Buist, Hon. Secretary.



BRIDGING THE GAP IN HEALTHCARE

Our local business offers personalised private mobile healthcare support to assist our clients in maintaining their independence in their own home and community. We are there when family and friends can't be.

Call our highly skilled Nursing Team today to discuss how we can enhance your lifestyle and independence, including health and domestic coordination.

Please refer to our website for a full description of services offered by our experienced team.

Our Services

- **Transport**
 - Qualified Nursing assistance to or from hospital, medical or other health appointments, on time, and in comfort. Wheelchair and walker enabled.
- **Social Support**
 - assistance to attend shopping, social outings, lunch, movies etc.
- **Patient Advocacy**
 - attendance at medical appointments to translate jargon, take notes for family, assist with scripts, pathology and radiology.
- **Personal Nursing and Home Care**
 - in your own comfortable surroundings.

procaresupport.com.au
1300 783 765



Mt William Advanced Tree Nursery

Growers of
Quality Trees and Shrubs

539 West Goldie Road
Lancefield Vic 3435
Phone: (03) 5429 1517 Fax: (03) 5429 1055
Open Monday - Friday
Closed Sat-Sun and Public Holidays



It's not just a home loan. It's the start of something bigger.

A home loan isn't just a set of numbers. It's bigger than that. It's a place to raise your family, the community you're going to be part of.

At Lancefield **Community Bank**® branches we know how important a home loan is. That's why we go out of our way to deliver great deals on home loan tailored to suit your needs.

If you're refinancing or buying a new home or investment property you can save up to 0.7%pa off the standard variable home loan rate. And when you do more of your banking with us, you'll receive even better value, reduced fees and added flexibility.

Drop into your nearest branch at 20A High St Lancefield - 5429 1977 to find out more.



Michael O'Gorman
Lancefield Branch Manager

Bendigo Bank
Bigger than a bank.

bendigobank.com.au

Lancefield **Community Bank**® branches

All loans are subject to Bendigo Bank's normal lending criteria. Fees, charges, terms and conditions apply. Bendigo and Adelaide Bank Limited. ABN 11 068 049 178 AFSL/Australian Credit Licence 237879. 847285-8 (21/4/2014 v2) (16/05/2014)





LANCEFIELD NEIGHBOURHOOD HOUSE

78 High Street, PO Box 171 Lancefield 3435; Phone: 5429 1214; Email: lancefieldhouse@tpg.com.au; Web: www.macedoncommunity.org

VOLUNTEER POSITIONS AVAILABLE

WEBSITE MANAGER

The Neighbourhood House has a new website There is still more content to add and we would appreciate any assistance to help build the site to be one which reflects the work of the House and keeps people up-to- date with activities. Knowledge of Word Press is helpful but training will be available for anyone interested in filling the role. Phone Vivien at the House on 5429 1214 for more information.

LANCEFIELD DATABASE RESEARCHER

We are in the process of gathering information for a Lancefield township web site.

We are aiming for the site to be a central communication hub for the community. Gathering information and images so the site can be built will require the input of several people.

UPDATES FROM SOME OF OUR VOLUNTEERS

THE TOWN HOUSE

"Community Spirit and volunteer support are integral to a healthy environment and sustainable lifestyle. A diverse mix of personalities assist in a cheerful and helpful manner with all types of general inquiries. Tools for communication, handy hints and friendly service typify the personnel.

As a much newer and very inexperienced member I have found the experience rewarding.

Accessing handy information in a smallish community in a one stop shop is a wonderful asset and highlights the value of diversity and variety. Coupled with the opportunity shop next door and adjacent book shop and café, a real win for a small town."

THE FARMERS MARKET

"The committee are currently working with accredited farmers' markets from Riddells Creek to Bendigo, through the Victorian Farmers' Markets Association to create a series of "Local Producer Field Days' for industry – think a farmers' market, forum & online ordering service for retailers, hospitality, transport & education providers, that aims to increase consumption of local products across the region.

Another project in the pipeline for the Market is children's cooking classes on offer within the farmers' market. Stay tuned for more details as they come."

INCREDIBLE EDIBLE

"I got a dirty look the other night when I was picking lettuce for my dinner out of one of the Incredible Edible barrels down the street. Maybe you should let people know through the Mercury that it's ok to help yourself to the herbs and

greens – just don't take so much that the pots are bare.

We still need lots more barrels to do the rest of the street, particularly on the other side – maybe you can ask if people have any sources for us to get them from?"

AGM

Our AGM was held on Thursday 16 October.

I would like to welcome back Ingrid Mooy as President, Peter Quinn as Vice President, Rhonda Cusack as Treasurer, Daniel Rogan as Secretary and committee members Linda Davies, Caroline Middenway, Glenys Bowen-Hill, Richard Dickinson, Nikki Reeves, Deidre Knell, Kate Christie and Brian Jordan.

Retiring from the previous committee were Michael Fitzgerald and Peter Willis – a very big thank you for their contributions, and a very big welcome to new member Graeme Knell and returning to the committee Richard McDonald.



Towards a healthier & happier community'

Dr Paul Carter

Dr Marina Kefford

DR Amna Khan

Dr Natalia Tellez

Dr Zahid Iqbal

17 High Street Lancefield

5429 1362

AH 1800 022 222

Monday to Friday 8:30am – 5:30pm

Saturdays 8:30am – 1:00pm

Bulk Billing for Children U'16

Pensioners & HCC Holders



- ~ Cutting & Colouring
- ~ Hair Extensions
- ~ Formal Hair Styling
- ~ VersaSpa Private Tanning Booth
- ~ Gift Vouchers



DE LORENZO

Pollyanne Brown is now offering a full range of Beauty Services at The Hair Room Lancefield

Shellac



- ~ Waxing XXX
- ~ Shellac Nails
- ~ Teeth Whitening
- ~ VPL Laser Hair Removal
- ~ Moroccan Spray Tans
- ~ Lash & Brow Tints



5429 1427 26 High St Lancefield



George's

MOWING & GARDEN CARE

ABN: 17 137 923 030

0417 883 681

No job too BIG or too small.

Call for a FREE quote.

- * Hedging
- * Green Waste Removal
- * Mowing & Edging
- * General Garden Clean Up
- * Pressure Washing
- * Tree / Limb Removal
- * Property Maintenance
- * Gutter Cleaning
- * Paving & Paths
- * Outdoor Painting (Decks & Fences etc)
- * Odd Jobs

SOLAR DIRECT

'Solar Energy Experts'

- Solar Hot Water
- Grid Interactive Solar Systems
- Stand Alone Power Systems

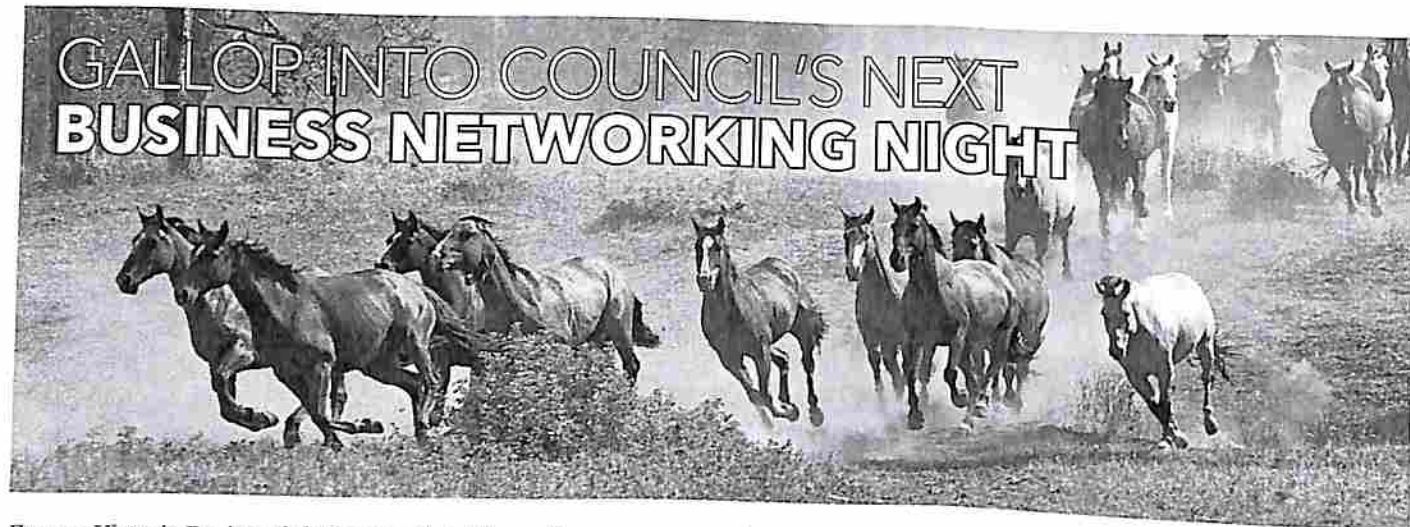
Generous Government Rebates

Fully Accredited and Insured

Call today for a no obligation quote

Ph: 5429 2506

Mbl: 0411 269 489



Former Victoria Racing Club Deputy Chief Executive, Sue Lloyd-Williams AO, will share her extraordinary achievements in the racing industry and beyond at a Council-organised business networking evening at Cope Williams Winery on 17 November, from 6.30pm to 9.30pm.

Among Sue's many achievements is being responsible for the development of an international strategy which has turned the Melbourne Cup Carnival into a global event.

Sue was also instrumental in the growth of Fashions on the Field, which had an enormous impact on Oaks Day crowds. Sue recognised that women were an untapped market so utilised fashion to lure them to the track.

Sue is currently involved in a range of international engagement initiatives with the Victorian Government, and

has recently led equine trade missions to Hong Kong, Middle East and Turkey.

Through Macedon Ranges Shire Council's relationship with Sue and the Victorian Government, some local businesses have already attended trade missions in the Middle East and Hong Kong.

Sue will speak to businesses about her achievements with a focus on her international experiences, marketing business overseas and the importance of forming relationships—including networking, the key to success.

Tickets to the networking night are \$30. For more information about the workshop or to book, contact Council's Economic Development and Tourism Department on (03) 5421 9616 or email ecodevadmin@mrsc.vic.gov.au.

APPRENTICESHIP

Here is an opportunity for a school leaver to pursue a career in the civil construction industry.

Certificate III in Civil Construction (Plant)

- Requires Year 11 pass
- Enjoy working outdoors
- Mechanically minded
- Certificated course
- On the job structured training
- Work in a team environment
- Local Employer
- Expanding Industry

Learn all aspects of earthmoving, road construction and drainage including operation of plant & equipment. Must have a dedicated work ethic. Position to commence early 2015.

Applications in writing to
The Manager, P O Box 228, Romsey Vic 3434
Email to dougn@newearth.com.au
Fax: 5429 5616
Closing date 14th November 2014

D.C. WELDING & STEEL FABRICATION

WELDING (ON-SITE / OFF-SITE)

MIG, TIG, ARC, MILD STEEL,
STAINLESS STEEL, CAST IRON

TRAILER REPAIRS & MODIFICATIONS

D.L.I. CERTIFIED
25 YEARS INDUSTRY EXPERIENCE
FULLY INSURED

0448 752 638

HANGING ROCK CHRISTMAS TREE FARM

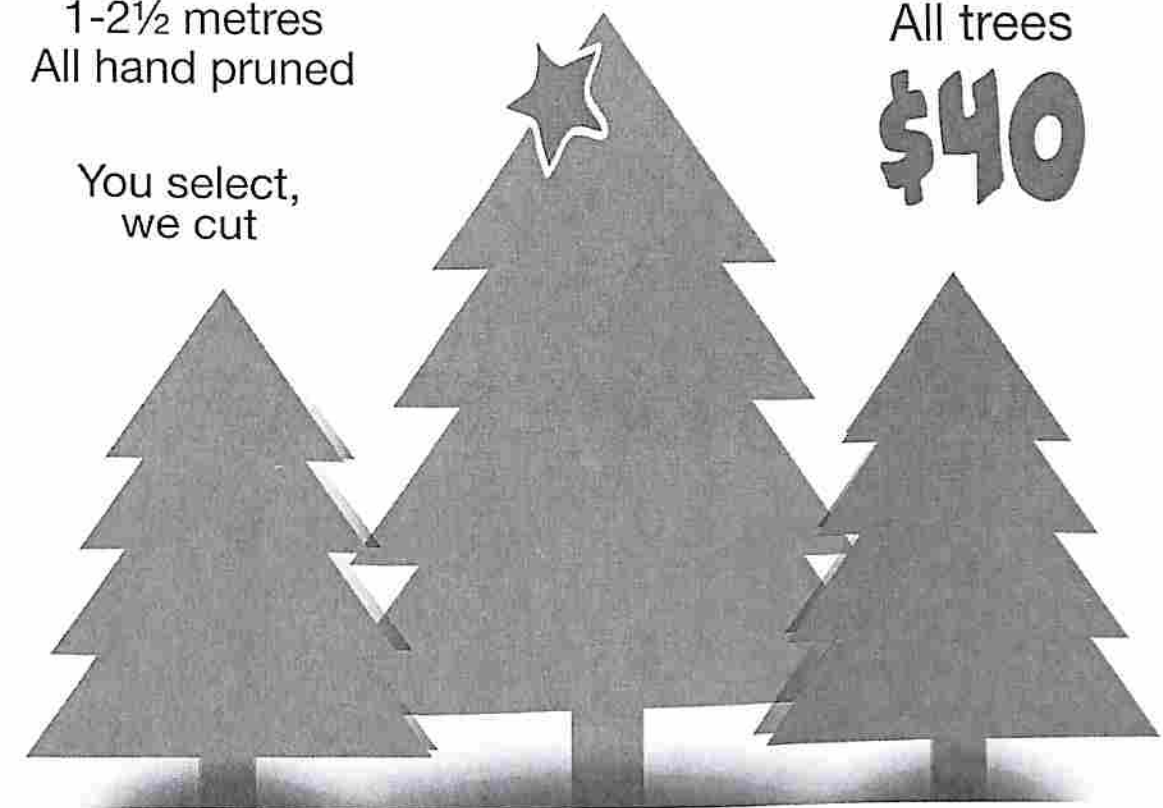
Yes, after a 5 year break, we are back in business

OVER 1000 TREES TO CHOOSE FROM

1-2½ metres
All hand pruned

All trees
\$40

You select,
we cut



OPEN 7 DAYS – 8am to 6pm

NOVEMBER 30th until DECEMBER 23rd

We look forward to meeting both old and new customers.

LOCATION: 699 Romsey Road, Hesket via Woodend
5427 0721 • 0418 329 072

DIRECTIONS: FROM ROMSEY - Travel 10kms west towards Woodend. After passing through Hesket (Fire Station and School), watch for the signs 1km on right.
FROM WOODEND - Travel towards Romsey for 7km, after crossing Straws Lane, we are the 2nd gate on the left.



COMBINED PROBUS CLUB OF ROMSEY AND LANCEFIELD INC.

P.O. Box 280, Romsey. Vic. 3434

MONTHLY MEETINGS

Monthly Meetings are held on the fourth Thursday at 10am in St.Mary's Church Hall, Main Street, Romsey.

Persons interested in this club and wish to have more information please contact the President or Secretary at the above phone numbers.

NEXT MEETING

Next meeting Thursday 27th November at 10am.

Guest Speaker: Anne & Graeme Simson - speaking about their recent walking tour.

PLANNED OUTING

The planned outing for Wednesday, November 19th, is a Bus Trip to the Flemington Racecourse Rose Garden and lunch at the Restaurant. **ARE YOU INTERESTED IN MEMBERSHIP??**

We meet once a month and we deal with the normal matters of a club, like correspondence, treasury, and

discuss the last outing we had enjoyed, and most important, where we are going to next month, a short tour, a long tour, a lunch somewhere. Our monthly meeting always finishes with morning tea, which is followed by a guest speaker with an interesting topic.

A FEW OF OUR MEMBERS ENJOY

'Ten Pin Bowling' each fortnight at Watergardens (definitely non-serious) followed by lunch at a nearby hotel or club.

We also enjoy a monthly musical/film afternoon at a members home and Friday coffee mornings at a local café.

If you are retired, or close to retiring, come along and join us and learn more about what Probus can offer you to assist you in staying active.

All we want to achieve is a day of enjoyment and friendship.

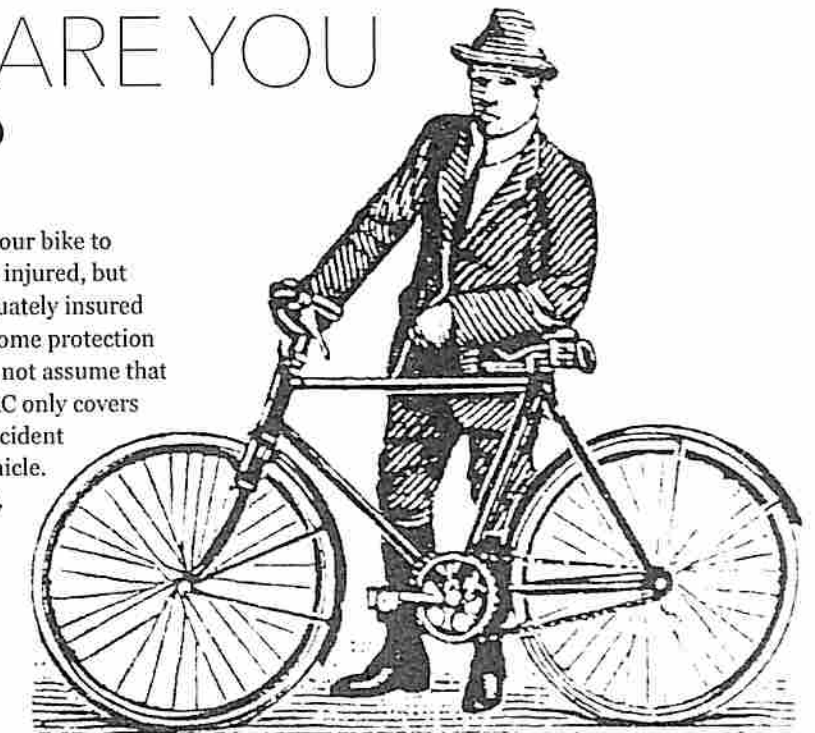
Please come and have a look at what we do and who we are.

Please check out our website for information about the Romsey & Lancefield Probus Club rlprobus.org.au

CYCLISTS- ARE YOU INSURED?

You can't afford not to be. When you get on your bike to go for a spin the last thing you expect is to be injured, but accidents sometimes happen and being adequately insured for ambulance cover, personal injury and income protection is essential whether riding on or off road. Do not assume that the TAC covers everything, it doesn't. The TAC only covers you for injury when you are involved in an accident that occurs on the road involving another vehicle. If you ride into a parked vehicle, for example, you may not be covered.

If you unfortunately suffer a serious injury the costs of rehabilitation at the level you need may be prohibitive without adequate insurance. Being involved in an accident is stressful enough without having to worry about the financial costs to you and your family. Cycling Australia, Bicycle Network Victoria, Mountain Bike Australia are some of the cycling organizations that provide insurance as part of their membership fees. Get onto their websites and check out what they offer and get yourself insured today.



Facebook.com/BikeSafeMacedonRanges
Join today: bikesafemacedonranges@gmail.com

Margaret Douglas

CONCRETER

- ★ House Slabs ★ Factory and Shed Floors
- ★ Footings ★ General Concreting

HERITAGE HARDSCAPES

PHONE MICK
Ph: 5429 1893 Mob: 0412 547 152
Fax: 5429 2423
Lancefield

Quick Fix Services

- Small Repairs & Construction
- Labour Hire
- Light Fabrication
- Home Maintenance

Fully Insured
ABN: 74 565 332 611

Colin Showler
Mob 0419 322 921
Email c.showler@inbox.com
6 Gwen Place Lancefield 3435



IGA plus LIQUOR

— 21 High Street, Lancefield —

OPEN 7 DAYS
MON - SAT 8.00am - 8.00pm
SUNDAY 9.00am - 8.00pm



Ph: 5429 2400

"Serving the Community"

sustainable agronomics

Agronomic services include;

- Coupled soil and tissue test for ultimate pasture growth
- Pasture rotation programmes
- Tailored pasture renovations
- Crop inspections
- Animal health problems
- Reproduction performance monitoring
- Project management
- Ruminant and equine diets formulated
- Bovine artificial insemination

James Almond B.Ag & LM
W sustainableagronomics.com
E jamesalmond@live.ie
P (03) 54291609
M 0400 353 512

KRISTINE'S PAINTING SERVICE

PAINTER & DECORATOR

- Interior and Exterior Painting
- Special Effects
- Colour Consulting
- Pensioner Discounts Available
- Free Quotes
- Kitchen Benchtop & Cupboard Conversion

Phone: Kristine - 0432 181 136



INDEPENDENT BUILDERS NETWORK

Fleming **CONSTRUCTIONS%**

EXTENSIONS, RENOVATIONS, NEW HOMES

0401 499 898 REGISTERED Building Practitioner

www.flemingconstructions.com.au
flemingconstructions@bigpond.com

A FASHIONABLE FILM SOCIETY

At the usual October meeting of the Macedon Ranges Film Society, the audience was treated to a film capturing the fashions of New York as seen through the lens of New York Times photographer Bill Cunningham. The documentary chronicles the obsessive interest of this 80-year-old and provides viewers with a range of truly historical fashion footage. On October 22nd, the film society will be showing the film *The Umbrellas of Cherbourg* which was cancelled in August due to weather damage at the Centre.

In November, laughter is bound to be the order of the evening as we watch a couple trying to adjust to living in a seaside town. *Bienvenue chez les Ch'tis* (Welcome to the Sticks) is a 2008 French film from the director Dany Boon. This film will be the last of the year to be screened and members can look forward to an equally interesting year of films in 2015.

The Society meets on the second Wednesday of the month at 7 p.m. in the Woodend Community Centre. Film notes and supper, provided by members, are also supplied.



The Umbrellas of Cherbourg



Bienvenue chez les Ch'Tis



Bill Cunningham

Enquiries must be made initially by phoning Lorraine on 5427 0921 or Christine on 5429 5452.

Christine Caley.

PHARMACY *Lancefield*

JOIN NOW

Rewards program
LoyaltyOne

Ask instore for more details

Ear Piercing
Available
instore

NDSS

Diabetes

Kodak Express
Digital Solutions



Photo Options

6 x 4
5 x 7
6 x 8

Picture CD's
Movie DVD's
ID Photos
Calendars
Cards
Collages
Mini Prints

Lancefield Pharmacy
15 High Street
Lancefield Vic 3435
Ph: (03) 5429 1691

Find us on facebook

Trading Hours
Monday - Friday 9.00am - 5.30pm
Saturday 9.00am - 1.00pm
CLOSED Sundays

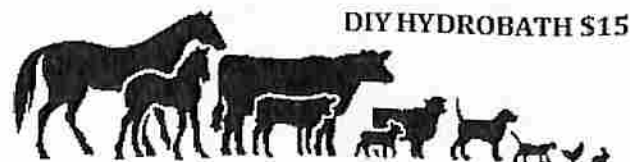


WERX CONSTRUCTIONS
Builders & Contractors

- Building of New Homes • Renovations
- Extensions • Free Quotes • Roof Specialist

641 Burke & Wills Track
Lancefield VIC 3435
Email: stevewerx@hotmail.com

Steve: 0412 039 653

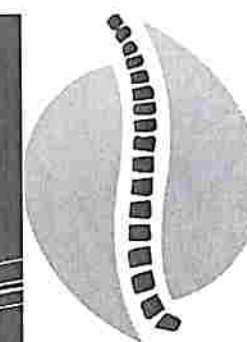


DIY HYDROBATH \$15

Romsey Veterinary Surgery

80 Main Street
Romsey 3434
5429 5711
admin@romseyvet.com.au
www.romseyvet.com.au

Open 7 Days • 24hr Emergency Service



Lancefield Chiropractic

CHIROPRACTOR OPENS IN LANCEFELD !!!

Clinic now open at 29 High Street, Lancefield.

OPENING HOURS

MON- 10am- 7.30PM
TUES- 10am- 7.30PM
WED- CLOSED
THURS- 10am- 7.30PM
FRI- 10am- 7.30PM
SAT- 7.30am- 2pm
SUN- CLOSED

BOOKINGS ARE
ESSENTIAL !!!!

Lancefield welcomes
Chiropractor Michael Fusca
who has opened Lancefield
Chiropractic.

Initial consultations are to
establish whether an issue can
be helped with Chiropractic
care. If this is the case, Michael
will determine the treatment to
help you with your complaint.

**CHIROPRACTIC
SERVICES WILL
NOT BE
AVAILABLE
FROM THE
24TH/10 TILL
THE 1ST/11 !!!!!**

Chiropractic can help with....

- Back pain
- Neck Pain
- Stiffness
- Headaches
- Sports related issues

- Trauma related injuries
- Muscle ache
- Posture related pain patterns
- Most Third Party Claims
- And more.....

**TO BOOK AN APPOINTMENT PLEASE
CALL
0413 836 576**



ST MARY'S PRIMARY SCHOOL LANCEFIELD

THEATRE, FAIRYPARK, ART SHOW, MUSIC CONCERT AND SO MUCH MORE GOING ON

PREP : READERS THEATRE

The prep students had the opportunity to showcase their reading skills to the community as they performed numerous fairytales including The Three Little Pigs and other popular tales. They are to be congratulated for the level of reading they have developed thanks to the work at home and school.

THE FAIRYPARK

This term the Preps have been learning about Fairytales. To celebrate our unit we went to the FairyPark and explored the world of Fairytales.

ST MARY'S ANNUAL ART SHOW & MUSIC CONCERT

Well done again to the students for an entertaining night. It was great to see the students create their own performances. Thanks to the staff, especially Mrs Vecchio and Mrs Dwyer. Thank you for the positive feedback from parents and the community.....

" just a quick email to thank you all for such a fabulous concert last night. I think it was the best one so far. The children's enthusiasm was just amazing. Sometimes the senior students are very half hearted about it and a bit too 'cool for school' but last night they were all so involved and really got into the spirit of thenight. The audience could really sense the joy the children felt performing....."



YOU CAN DO IT PROGRAM

Focus for this term is Getting Along

Acknowledge getting along behaviour such as, "You are a good listener" or "You are a helpful person".

On the November 6th we will be hosting a 'You Can Do It' information evening which will be open to the public including local clubs. (7pm- 8:30pm).

REGIONAL ATHLETICS

Well done to Darcy Giles, Ethan Beer and Brody Thrum and who will be competing at the Regional Athletics Finals in Bendigo on Monday Oct 13th. Darcy ran 3rd in the 800 metres.

JUNIOR PLAYGROUND

Junior Playground earthworks have commenced, we are looking forward to seeing the progress, thank you to all the school families for your support with this project.

DRIVE IN MOVIE & FIREWORKS NIGHT

St Mary's P & F proudly presents *House Of Magic*
Saturday November 15th 2014



Romsey Beauty Spot

Shop 2

112 Main St

Romsey

PH: 5429 5499



JACKSON'S TOWING SERVICE 0427 516 071

BREAK DOWN AND TRADE TOWING
FREE CAR REMOVALS
FREE REMOVAL OF OLD OR INCOMPLETE
CAR BODIES, 4X4 AND LIGHT TRUCKS

BRAD JACKSON
16 Dundas Street,
Lancefield VIC. 3435

ABN 24 530 765 922
Fully Insured

MIGHTY MOUSE ROOFING

Mark Mouser - 0419 562 605

License # 48263

- ❖ Specialist in metal fascia and gutter, roofing, flashings and downpipes
- ❖ Repairs, renewals, extensions, new houses and sheds

BODY TUNES REMEDIAL MASSAGE

- For Acute and Chronic Pain
- *Migraine / Headaches
- *Back or Neck pain
- *Sport injuries and much more

Remedial massage is very effective at obtaining rapid results.

Please call to make an appointment with
Stephanie Wooster Dip.RM
On 54293802 or 0407367840
Shop 2/110 Main Street Romsey

Gift Vouchers Available
Health rebates



ST. MARY'S PARISH - LANCEFIELD & ROMSEY

27-29 Chauncey St, Lancefield & 85 Main Rd, Romsey Parish Priest: Fr. Arnold Heredia Pastoral Associate: Mrs. Joanne Reuther 5429 2130

MASS TIMES

Saturday: 6.00 p.m. Lancefield
1st & 3rd Sunday of the month:
8.00 a.m. Lancefield and 10.00 a.m. Romsey
2nd, 4th & 5th Sunday of the month:
8.00 a.m. Romsey and 10.00 a.m. Lancefield

RECONCILIATION

Saturdays 9.45am Romsey & 5.45pm Lancefield.

BAPTISMS

February, April, June, August, October, December.
For more information, please phone 5429 2130.

REGULAR EVENTS

SVDP Drop-In: First Thursday of each month,
10.30 a.m. to 4.00 p.m., St. Mary's Church Hall, Romsey.
All welcome to come for a game of cards/chat and free lunch.

ADVENT/CHRISTMAS 2014

Advent Reconciliation: 9th Dec 7pm Romsey

Advent Reflection Day: 10th Dec 9.30am-3.00pm at
Lancefield Presbytery
Parish Mass of Anointing: 11th Dec 2pm Lancefield
Ecumenical Christmas Carols: 14th Dec 7pm at St.
Mary's School Hall
Christmas Eve: 24th Dec 6pm Lancefield
Midnight: Romsey
Christmas Day: 25th Dec 9am Romsey
The Holy Family of Jesus, Mary & Joseph: 27th Dec
6pm Lancefield
28th Dec 8am Romsey
10am Lancefield
New Years Day: 1st Jan 7pm Romsey

BINGO IS BACK

At St Mary's Parish Hall. Location: 85 Main Rd, Romsey.
Plenty of parking.

Bingo will be held on the second and fourth
Thursday of each month. Eyes Down AT 7:30PM. November
13th & 27th. December 11th & 18th Bingo will close over
Christmas and re-open January 8th 2015

Come and join our friendly team in a social,
inviting atmosphere & have lots of fun. Cash Prizes. Only
\$3.00 per Book (15 games). Light snacks available, FREE
Tea/Coffee. You Have To Be In It To Win It.

ST MARY'S SCHOOL LANCEFIELD PRESENTS

THE HOUSE OF MAGIC



DRIVE IN MOVIE & FIREWORKS NIGHT

Venue - Lancefield Park

Saturday 15th Nov. from 6pm

Pre-pay by 7th Nov. \$50 per car

BOOKINGS - 0433 146 333

(Late bookings / on-night entry \$60 per car)

**LUCKY DOOR PRIZE FOR
PRE-BOOKED TICKETS

BBQ, Hot Chips, Fairy Floss,
Donuts, Giant Slide,
Face Painting & more...

TO ALL PET OWNERS REGARDING THE FIREWORKS DISPLAY
THE SHOW WILL NOT COMMENCE BEFORE 10PM & WILL BE FINISHED BY
11.30PM. SOME ANIMALS MAY BECOME AGITATED SO PLEASE MAKE SURE
AS A RESPONSIBLE OWNER THAT YOU SUPERVISE YOUR ANIMALS.
FOR ANY ENQUIRIES PLEASE CALL AIRWIZE PYROTECHNIC DISPLAYS ON 0409 387 757



Pete's puters

For all your computer
requirements

Computer Sales & Repairs
Systems Custom Built for Your Needs
Internet Connection Setup
Home & Small Business Networking
Tuition
Free Consultation & On-site Service

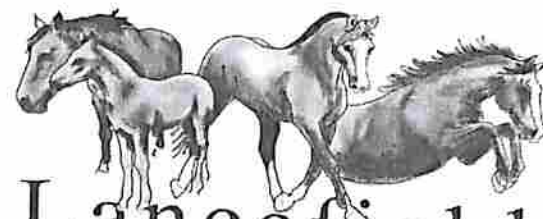
Call Peter Quinn on...

54 292229

0400 581 674

pfquinn3@bigpond.com

Operating in Lancefield over 10 years.



Lancefield Equine Clinic

• Dr Miesja Reynolds • Dr Olivia Nugent

Ph 03 5429 1609 or 0409 229 408 for appointments, or
email the clinic on lancefeldequineclinic@bigpond.com

24 hour emergency on call service

Lancefield Equine Clinic,
63 Whalans Track, Lancefield 3435
Access also via Ashworths Road

www.lancefeldequineclinic.com



Social Business Networking Night

17 November (6.30pm-9.30pm)
Cope-Williams Winery, Romsey
Cost: \$30

Highlights:

- **Special guest speaker:** Sue Lloyd-Williams
AO, former Victoria Racing Club Deputy Chief
Executive recognised for distinguished service
to the racing industry and the promotion of
women.
- Find out how Council is working with
business and what's on offer for 2015.

Bookings: ecodevadmin@mrsc.vic.gov.au
or phone (03) 5421 9616

KYNETON Dental

SPECIAL

Check up, clean & X-ray (if required)
This month only, mention this ad

\$135-

Services we offer:

- Seniors discounts
 - Cosmetic dentistry & whitening
 - No Gap treatment for eligible children under the CDBS (Child
Dental Benefit Scheme) aged 2yrs - 17 yrs
- We also accept all health insurance cards with on the spot claims &
department VET affairs patients.

65 High Street, Kyneton

Ph 5422 6159

Open Mon - Sat 9am to 6pm

After hours emergencies service available



PASTORS PARABLE

THE STORY OF THE COW AND THE PIG

A rich man complained to his friend: "People don't like me. They say I'm selfish and stingy. And yet in my last will and testament I have donated all that I own to charitable cause." His friend said: "Well, maybe the story of the cow and the pig has a lesson for you."

"The pig came to the cow and complained: 'People always talk about your friendliness. I know you are friendly, you do give them milk. But they get much, much more from me. They get ham and bacon and lard and they even cook my feet. And yet - no one likes me. To all of them I am just a pig, a hog. Why is that?'"

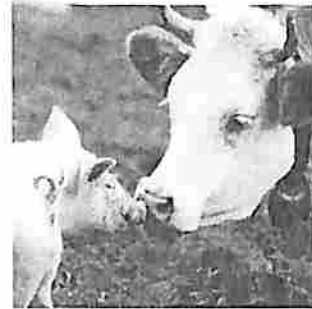
The cow thought it over a bit and then said: 'Perhaps it's because I give while I am still alive!'"

As parents, we love to give gifts to our children. Seeing the joy on their faces is our gift. No one has to teach them how to enjoy gifts they love and desire. And no one has to teach us how to give to them. We love our families - so we give.

God our heavenly Father also loves to give gifts to all those He loves. Not just when we go to heaven but here and now. Have you ever asked Him?

FAMILY FUN DAY

Tuesday 4th November @ 12 Noon - "Family Fun Day" @ Romsey Skate Park, Main Road Romsey. BYO BBQ



food, Picnic, drinks, chair & wheelbarrow!

Lots of fun activities including prizes for best HAT competition (Men, Women & Children categories). *Everyone Welcome*

If you would like to know more about faith in Jesus please contact Pastor

Marilyn or our Church office Ph 5429 6327

We would be happy to help you find true peace and joy in life.

Encourage Church: "Encouraging one another to be ALL that we can be in life and in God".

You are also invited to join us at one of our Sunday Services: 10am at 7 Mitchell Court Romsey | 6pm at Woodend RSL Hall 32 Anslow St Woodend

Or one of our fortnightly Life Groups. Fortnightly Youth events and weekly Children's programs.

We also offer Kidzone Before & After School Care, Vacation Care, 'mainly music' Program

Pastor Marilyn Hunter
Encourage Church

COLOUR IN!



Name: _____ Age: _____

Contact phone number: _____

The Tree House The winning entry will receive a \$10 gift voucher from *The Tree House*.
Colouring Competition Sponsored by *The Tree House*, 30 High St Lancefield. Phone 0409 406 956
Entries can be posted or left at the shop by the 15th of each month
Opening hours 9.30 - 4 Wed to Fri and 10 - 3 Sat.

ADVERTISEMENT

mary-anne thomas
LABOR CANDIDATE FOR MACEDON

Victorian Labor

You can contact me anytime on:
 ■ PO BOX 646, Kyneton VIC 3444
 ■ m: 0487 237 600
 ■ e: mary-anne.thomas@vic.alp.org.au
 ■ f: MaryAnneMacedon
 ■ @MaryAnneMacedon

Authorised by Dennis Franklin 20/11/2014 09:00, Goulburn

Chess Property Consultants
102 Main Street, Romsey 5429 5544
www.chessproperty.com.au

SPECIALISING IN SALES & PROPERTY MANAGEMENT

We have the experience to achieve the BEST Results

For all your Real Estate Needs and Enquiries
Make your MOVE with
Chess Property Consultants

102 Main Street, Romsey Vic 3434
Phone: 5429 5544
Liz: 0428 295 500
Walter: 0432 945 422
E-mail: info@chessproperty.com.au

Connallys
REAL ESTATE ROMSEY

Open the door to your future
connallys.com.au

THINKING OF SELLING
Whether you are selling or just thinking of selling take advantage of our
NO OBLIGATION FREE MARKET APPRAISAL
LANCEFIELD/ ROMSEY and DISTRICT

SALES James Shalders: 0412 136 578
RENTALS Julie Ellis: 0409 433 699
Office 03 5429 6842

Proud member of the REIV

WWI PHOTOS NEEDED!

The volunteers at the Courthouse are working on a project for Anzac Day 2015. We would like to find photos of the WWI soldiers to add to the project.



We are not asking for the photos to be donated, we would like to copy the photo and you can take your photo home with you. We would also appreciate any information that could be added to our collection.

Our Annual General Meeting will be held at the Courthouse on 25th November at 7.30.

New members are always welcome. We recently had a family visit the Seymour Cottage. They were most interested in the history of the cottage.

The garden at the Cottage is looking quite good at the moment, many of the plants are in flower.

Further information please contact Shirley on 0402 248540 or Robyn on 0418 172 659

NORTH WESTERN ESTATE AGENTS PTY LTD



Selling
Residential - Acreage
Commercial - Lifestyle
Property

Call to discuss your next move!

117 MAIN STREET
 ROMSEY VIC 3434
 Office: 5429 6777

reception@northwesternestateagents.com
 www.northwesternestateagents.com

YOUTH SPACES ARE IN FULL SWING!

Macedon Ranges Shire Council's Youth Spaces are for young people aged 12-18 years who live, study, work, play or have a significant connection to the Macedon Ranges.

All our Youth Spaces run during the school terms and are fully supervised. Weekly activities at our include Master Chef challenges, circus skills, fitness sessions at the gym, games, Mexican fiestas, creative workshops and much, much more!

For more information or to find the nearest space to you, email Mim in Council's Youth Development unit via mgrundy@mrsc.vic.gov.au, or call (03) 5422 0296. Alternatively you can head to our Facebook page, facebook.com/MacedonRangesYouth or visit Council's website, mrsc.vic.gov.au/youth.

Keep an eye out for fun *new* skill building workshops and activities for young people coming up in 2015!

LANCEFIELD MERCURY INC ANNUAL GENERAL MEETING

To be held on Tuesday 26th November Venue to be advised.
 Details editor@lancefieldmercury.org.au. Andy 0430 448 120

Richmond Park Rural P/L GARDEN & ROAD MATERIALS

Delivered 2 U

*Spring Specials. Rye Small Squares \$8.00.
 Pea Straw Mulch \$9.00.*

- Crushed Rock
- Gravel
- Concrete Mix
- Mulches
- Sands
- Toppings
- Top Soils
- Barks

For customer Pick-Up! -
 Saturday's 8am-3pm 93 Main Road, Lancefield
 Or by appointment

All Enquiries 0411429003
 richmondpark34@gmail.com

TRUE BLUE GATES

ALL AUSTRALIAN MADE PRODUCTS

"Opening Specials"

FARM GATES

Galvanized Pipe

10' weldmesh \$ 70

12' weldmesh \$ 75

14' weldmesh \$ 85

(Fittings extra, other sizes avail)



HORSE ARENA - \$1800

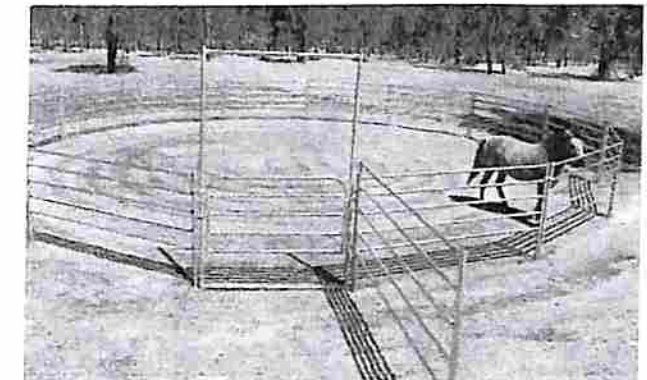
15.5m diameter

14 panels x 3.3m wide plus

1 x gate 2.1m wide. 1.6m high

5 rails 32NB galvanized pipe.

All fittings supplied

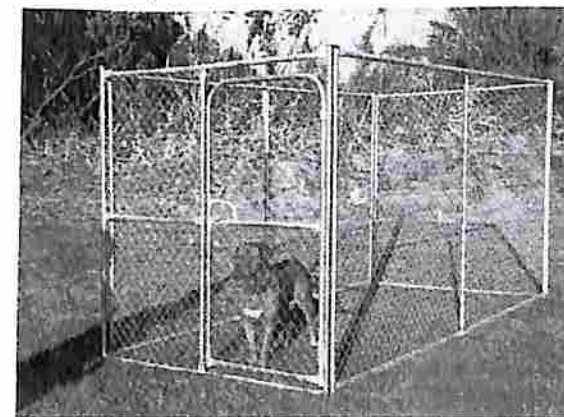


DOG RUNS

Chainmesh /weldmesh

Single (1800w x 1800h x 3600L) \$ 595

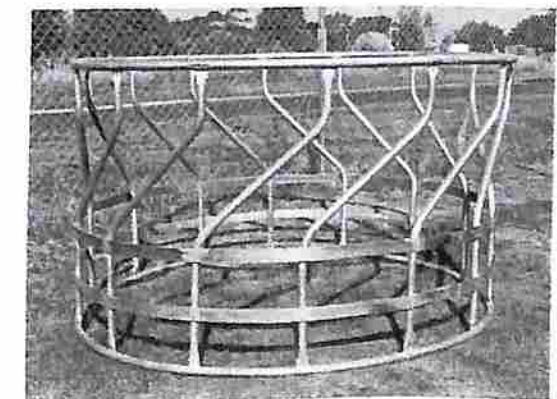
Double (3600w x 1800h x 3600w) \$ 895



HAY FEEDERS - \$295

Approx. 2m diameter

(14 head)



Ph. 0412 168126

PICK UP FROM ROMSEY (Prices are ex-GST) Email: sandtanderson@bigpond.com



THE ANGLICAN PARISH OF CHRIST CHURCH, LANCEFIELD AND ST. PAUL'S, ROMSEY

NOVEMBER IS THE MONTH OF REMEMBRANCES

Remember! November is the month of remembrances! On November 11th, Remembrance Day, we remember all those men, women and children who suffered and died that we might live in peace and security.

A peace and security which is being severely tested today. We are called to support in prayer, materials and other means those who are suffering persecution and death because of their Christian Faith or ethnicity.

Remember, remembered and remembrance is quoted over 300 times in the Bible. Ecclesiastes, the Preacher warns us, "Remember your Creator in the days of your youth" - why wait until we are old and grey before getting in touch with the One who made us, loves us and laid down His life that we might have fellowship with Him?

Remember the thief on the Cross, who at the eleventh hour said, "Jesus, remember me when you come into

your kingdom." Luke 23:42.

One of the last commands of Jesus was to remember Him and His saving death on the Cross for mankind's sin was in the institution of the Lord's Supper.

Jesus took bread and said, "This is my body which is given for you, do this in remembrance of Me," then He took the cup saying, "This cup is the new covenant in my blood; do this, whenever you drink it in remembrance of Me."

Paul writes whenever you eat this bread and drink this cup you proclaim the Lord's death until He comes. 1 Corinthians 12:25-26.

We do well to remember that one day that will take place. And when I think that God, His Son not sparing, Sent Him to die, I scarce can take it in,

When on the Cross, my burden gladly bearing, He

bled and died to take away my sin.

Then sings my soul, my Saviour God to Thee,
How great Thou art.

OCTOBER IN RETROSPECT

This month we were pleased to welcome the Rev. Len Greenhall as our locum vicar until the end of December. He was previously vicar of Holy Trinity Bacchus Marsh and Archdeacon of Essendon. AMS enjoyed another snooker night at Mrs. F Carter's home and their sales of snowballs went well for their Welfare Fund. The Guild held its Annual Meeting and Mrs Betty Dansey was elected President and Mrs Glenice Mitchell, secretary/ treasurer once again. The Guild looks forward to another year of fellowship and activity in the Lord's service.

Thank you all who supported the Guild's afternoon highlighting the ministry of Anglicare and the Tillow Fashions afternoon for the Christ Church Restoration Appeal. Very worthwhile!

\$464 was forwarded to the Bush Church Aid Society from boxholders to support this bush ministry.

NOVEMBER DIARY

Thurs.13th Nov. 8pm. AMS meets at Christ Church Lancefield Hall. Max. 5429-1597.

AMS Diaries 2015 are on sale now at \$6. Handy little diaries with lots of information. Tom 5429-6060 & Max Sunday 9th. Remembrance Sunday
Thurs.20th Nov.1.30pm. The Guild meets Christ Church Hall Lancefield. Glenice 5429-6418.
Sunday 16th.. 10am..Combined service at Christ Church Lancefield.. Morning Tea..Followed by the Church Annual Meeting. Attendance by members essential.. Sunday 23rd 7pm. Healing Service. Christ Church Lancefield. Rev.David Farlie

DECEMBER 2014

Sat.6th Dec. Parish Christmas Street Stall. Outside I.G.A. Romsey 9am. Cakes.Preserves.Gifts etc.

Minister: Rev. Len Greenhall. MOB 0437 072 124
Office No. 5429-1380
Correspondent. Mrs. Doreen Morgan.

OP SHOP OPENING HOURS

Thursday & Friday - 12.30 to 4.30pm. Saturday - 10 to 1pm.

We are not permitted to sell Electrical Items, Safety Equipment, or Infant Cots / Prams owing to safety regulations. We can not accept large furniture as we do not have the room for storage.

Crozier Bros

Trouble with trees call us please

Darren & John Crozier

Tree removal

Specialists



Tree lopping

Pruning

Stump Grinding

Back hoe work

Lawn Mowing

Mulch

0458 291 266

crozierbros@gmail.com

Macedon Ranges Physiotherapy

Ben Gidley

NEW PHYSIO NOW AVAILABLE
Bridy White

Specialising in dance injuries, womens health & pregnancy physiotherapy

Romsey Medical Centre
99 Main Street
Phone: 5429 5254

Lancefield Country Practice
17 High Street
Phone: 5429 1362



TAC . WORKCOVER . DVA
No Doctors Referral Required
HICAPS AVAILABLE

www.macedonrangesphysio.com
e: macedonrangesphysio@hotmail.com

GET YOUR BLOCK FIRE READY

FOR SUMMER!

Slashing & Mowing
Ride on Mower
Prompt Service, Reasonable Rates

Call Ken Notman 0408 509 441

BISDALE GARDENING

Mowing \$40/hr, Gardening \$30/hr

Margery 0439 374 711

cribbmj153@gmail.com

FOR SALE

FIRE FIGHTING TRAILER

1000 litre water tank.
Brand New Honda GX 160,
6.5hp Motor.
Brand New 20 meter hose.
Brand New couplings.
9 meter suction hose.
Very Good solid trailer, LED lights.



\$2,200

CAST IRON BURNER GAS RING...\$80
HEAVEY CAST IRON FIRE GRATE...\$100
(58CM X 36CM)

Phone John 0402 858 657

BOOK REVIEWS

CHILDREN'S PICTURE BOOKS



Hello from Nowhere
by Raewyn Caisley and
Karen Blair RRP \$24.99
Reviewed by Nielson
Bookdata

Eve thought that living in the middle of nowhere was better than living anywhere else in the world... Only one thing made Eve sad. She hadn't seen Nan since they left the city long ago.

Eve lives in a roadhouse in the middle of the Nullarbor and when her

Nan visits one day, Eve shows her all the things that are special about where she lives.

A moving celebration of the Australian outback and the special connection between grandparent and grandchild.

The Last King of Angkor Wat by Graeme Base
RRP \$26.99 Reviewed by
Nielson Bookdata

Tiger, Gibbon, Water Buffalo and Gecko are sitting amongst the ruins of ancient Angkor Wat, wondering which of them would have made the best king.

The appearance of a mysterious visitor leads them to discover their true selves in a race to a distant hilltop. A timeless



fable full of adventure and beauty from a much-loved storyteller.

YOUNG ADULT FICTION

The Sky So Heavy- By



The Sky So Heavy
Claire Zorn RRP \$19.95
*CBCA shortlisted author.
Reviewed by Abbie
Bennetts

'The Sky So Heavy' is written by Australian author Claire Zorn. It is set in modern day Sydney. Life is normal and routine for Fin Heath and his family.

He goes to school, hangs out with mates and ignores the constant nuclear missile threats being exchanged all around the world. One day nuclear tests go wrong and

the country is immersed into a nuclear winter. Surrounded by radioactive snow, all communities are cut off, left without a way out of their towns and with limited resources. Finding himself left alone with his younger brother Max, Fin has to take on the responsibility of protecting his family.

Fin learns a lot about a new way of living and about how disasters can bring out the worst in people. This book is really enjoyable, different and easy to read.

The Protected by Claire Zorn RRP \$19.95 Reviewed by Nielson Bookdata.

Hannah's world is in pieces and she doesn't need the school counsellor to tell



her she has deep-seated psychological issues.

With a seriously depressed mum, an injured dad and a dead sister, who wouldn't have problems? Hannah should feel terrible but for the first time in ages, she feels a glimmer of hope and isn't afraid anymore.

Is it because the elusive Josh is taking an interest in her? Or does it run deeper than that? In a family torn apart by grief and guilt, one girl's struggle to come to terms with years of

torment shows just how long old wounds can take to heal.

ADULT FICTION

Edge of Eternity by Ken Follett
RRP \$39.99
Reviewed by Nielson
Bookdata



As the decisions made in the corridors of power bring the world to the brink of oblivion, five families from across the globe are brought together in an unforgettable tale of passion and conflict during the Cold War. When Rebecca Hoffmann, a teacher in East Germany, finds herself pursued by the secret police, she

St Mary's Primary School
Lancefield/Romsey

**ENROLMENTS NOW
OPEN FOR 2015**



Ring 5429 1359
for a tour of the school

We are a feeder school for Assumption College,
Kilmore and Sacred Heart College, Kyneton

**WOODROOFES
PETROLEUM**

Your local fuel supplier

**DIESEL
UNLEADED
HEATING OIL**

Chris & Allison
Woodroffe

Ph: 03 54292466

Email: woodroffe@people.net.au
www.woodroofespetroleum.com.au

**Macedon
Ranges**
Shire Council

casserole

**Could you cook one extra portion
of dinner for an older neighbour?**
Casserole Club can match you with
someone who would appreciate one
of your delicious meals.

**Are you older and finding it difficult
to cook?**
Join Casserole Club and enjoy a
meal, delivered to you for free by a
friendly neighbour.

**Do something
great with an
extra plate!**

Contact us on (03) 5422 0218 or email
casseroleclub@mrsc.vic.gov.au

www.casseroleclub.com.au

BOOK REVIEWS

discovers that she has been living a lie. Her younger brother, Walli, longs to escape across the Berlin Wall to Britain to become part of the burgeoning music scene. In the United States, George Jakes, a bright young lawyer in the Kennedy administration, is a fierce supporter of the Civil Rights movement - as is the woman he is in love with, Verena, who works for Martin Luther King, Jr. Boarding a Greyhound bus in Washington to protest against segregation, they begin a fateful journey together. Russian activist, Tania Dvorkin, narrowly evades capture for producing an illegal news sheet. Her actions are made all the more perilous as her brother, Dimka, is a rising star in the heart of

the Communist Party in the Kremlin. From the deep south of America to the vast expanses of Siberia, from the shores of Cuba to the swinging streets of Sixties London, *Edge of Eternity* is a sweeping tale of the fight for individual freedom in a world gripped by the mightiest clash of superpowers anyone has ever known. *Includes family tree*

The Narrow Road to the Deep North by Richard Flanagan RRP \$19.99



August, 1943. In the despair of a Japanese POW camp on the Thai-Burma death railway, Australian surgeon Dorrigo Evans is

haunted by his love affair with his uncle's young wife two years earlier. Struggling to save the men under his command from starvation, from cholera, from beatings, he receives a letter that will change his life forever. This savagely beautiful novel is a story about the many forms of love and death, of war and truth, as one man comes of age, prospers, only to discover all that he has lost.

NON-FICTION

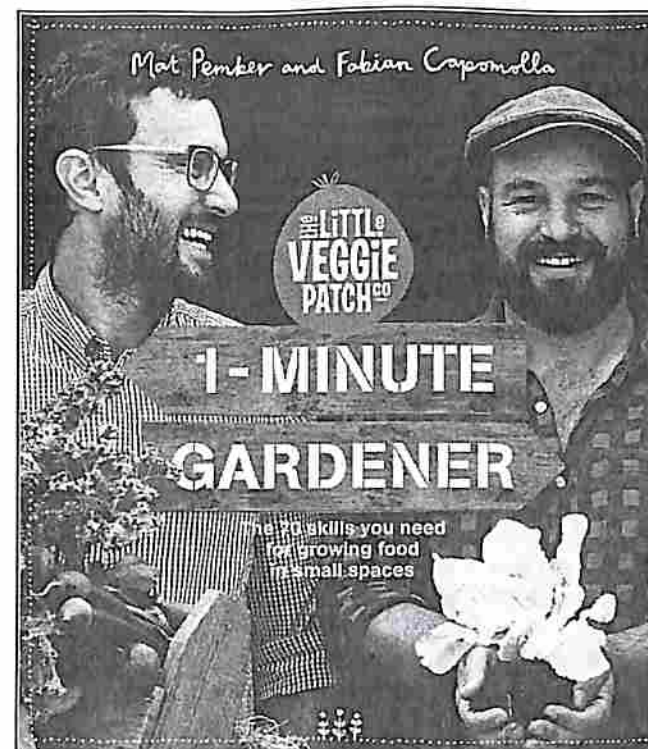
1-minute Gardener: The 70 skills you need for growing food in small spaces. by Mat Pember and Fabian Capomolla RRP \$45.00

As the brains behind The Little Veggie Patch

Co., Fab and Mat have taken the mystery out of - and put the fun back into - growing fruit and vegetables. 1-Minute Gardener features 70 fast, illustrated step-by-step guides to edible gardening essentials, from preparing and caring for your patch through to harvesting the rewards (and getting the kids involved along the way).

Historic Heston Blumenthal by Heston Blumenthal RRP \$79.99

British gastronomy has a grand old tradition that has been lost over time. Now our most inventive chef is out to reclaim it. Heston Blumenthal, whose name is synonymous with cutting-edge cuisine, still



finds his greatest source of inspiration in the unique and delicious food that our sceptered isle once produced. This has been the secret to his success at

world-famous restaurants The Fat Duck and Dinner, where a contrast between old and new, modern and historic, is key. Historic Heston charts a quest for

identity through the best of British cooking that stretches from medieval to late-Victorian recipes. Start with twenty-eight historic dishes, take them apart, put them together again and what have you got? A sublime twenty-first-century take on delicacies including meat fruit (1500), quaking pudding (1660) and mock turtle soup (1892). Heston examines the history behind each one's invention and the science that makes it work. He puts these dishes in their social context and follows obscure culinary trails, ferreting out such curious sources as The Queen-like Closet from 1672 (which offers an excellent method for drying goose). What it adds up to is an idiosyncratic culinary

history of Britain. This glorious book also gives a unique insight into the way that Heston works, with signature dishes from both The Fat Duck and the double Michelin-starred Dinner. With a beautiful cover illustrated by the genius that is Dave McKean, his illustrations throughout, and some of the most superb food photography you'll ever see, *Historic Heston* is a book to treasure. You think you know about British cooking? Think again.



Milos Starec

Electrical Contractor

206 Grahams Road Lancefield 3435

Phone: 5429 1990

Fax: 5429 1964

Mobile: 0411 596 802

Romsey Medical



Lancefield Medical

Romsey Medical, 99 Main Street, Romsey, 3434.
Lancefield Medical, 20 Chauncey Street, Lancefield, 3435.
☎ 54 295254 ☎ 54 296147 ✉ doctors@romseymedical.com.au
www.romseymedical.com.au

Romsey Medical Opening Hours

Monday to Thursday: 8.15am to 8.00pm
Friday: 8.15am to 6.00pm
Saturday: 8.30am to 1.00pm
Sunday: CLOSED

Lancefield Medical Opening Hours

Monday to Friday: 8.30am - 5.30pm
Saturday: Services through Romsey Medical
Sunday: CLOSED

After Hours Services

Between the hours of 8pm and 8am weekdays and 6pm to 9am weekends and public holidays after hours services Health Direct can be contacted on: 1800 022 222
For urgent attention between 1pm and 6pm on a Saturday and 9am to 6pm on a Sunday please call our doctors direct on: 0419 998 088

Remember:

Romsey and Lancefield can usually offer you on the day appointments - ring early for flexible appointment options.
Bulk billed Quick Clinic appointments are available every weekday at both centres, for urgent/lost repeat prescriptions, re-referrals and some vaccinations.

EARTHMOVING AND PLANT HIRE

TRUCK EXCAVATOR AND GRADER HIRE

TRAY TRUCK HAY CARTAGE

ROBERT GREEN

0408532603

HOUSE SHED AND TANK SITES, DRIVEWAYS

HORSE ARENAS, ANIMAL BURIALS

SAND SOIL GRAVEL & MULCH SUPPLIES

MACEDON RANGES
BOOKKEEPING

CYNTHIA MATTHEWS
OWNER

LANCEFIELD
VICTORIA
PH 0407 897 449
MACEDONRANGESBOOKKEEPING@GMAIL.COM

BUSTER'S Maintenance

Driveway Maintenance

90 H/P Tractor with 3 way Box Grater

Bobcat and Tipper Hire

Post Hole Augers

Grass Slashing

60in Zero Turn Finishing Mower

Stump Grinder

Contact: Buster Richmond

0419-334507 Lancefield

miniature
PET FARM

Julie Noonan 0417 378 746

Mobile
Farmyard Fun

- Miniature farm animals
- Guinea pigs galore
- Hands on experience

LANCEFIELD GOLF CLUB REPORT

VERY LUCKY INDEED

I am delighted to say that spring is bringing everyone out onto the golf course and all groups have been enjoying healthy numbers lately. Despite this, Carole was wont to comment that it is like "playing on your own beautiful, private course" There are no players coming up behind to make you feel anxious about, perhaps, being a bit slow. Here at Lancefield we can accommodate large numbers and still feel like we are the only players on the course. We are very lucky indeed.

The Lancefield Ladies hosted a most successful Tournament on September 25th. We had 44 players on the day with representatives from across the Dalhousie region. Sandra Wicking from Kilmore took out the Open Championship. The A Grade winner was Cheryl Anderson from Broadford. B Grade winner was Andrea Eacott from Woodend and the C Grade winner was our very own Jenni Vennell. Well done to you all.

We would like to thank Julie Mau from Arbonne for being our sponsor for the day. Julie provided all the prizes and they really were fantastic. A complete skin

care pack from Arbonne for all the major winners and a complimentary skincare pack for each participant. We are really grateful to Julie for her support and hope all our ladies will be impressed by how young Jenni V is looking since using the product and want to buy more Arbonne products for themselves!

Although Jenny Colson did not play her best game on the day she was cheered up immensely by the fabulous prize she won in the raffle. It really was a great day. Thank you to all those involved and to Desma, Lyle and Annie for their hard work in the kitchen.

The annual Medal of Medalists was played last month and the winner was Jenni Vennell with Kaylene Cruise runner up. Congratulations to you both. Di Rohde and Jenny Colson are representing the club at the Doris Chambers 4BBB final at Eastwood on 17th October and we wish them the best of luck.

Luke Rebecchi put in a great effort last month to win the Men's annual Medal of Medalists competition. Well done Luke. A win for walking youth over aging carters! Mark

Bollinger has put his name on the board to win the first Men's Monthly Medal of the new season. Congratulations Mark.

The annual Dalhousie Veterans competition was held at Lancefield last month and there was a very competitive mixed field of 54 players. Hilda Caly and Carole Mee put on a great lunch for all the players and a wonderful day of golf was had by everyone.

Melbourne Water are currently in the process of planting 3000 new plants along our waterways with another 2000 to be planted next year. This will be a great asset to the club in beautifying the course and we are very grateful for their input.

The automated sprinkler system has been approved and we look forward to the installation of this great time-saving device. No news yet on our plans to have the old clubhouse demolished and a new toilet installed on the site but we will keep you posted.

The annual Gala Day Competition, sponsored by Kilmore Trackside, will have been played and won and we

will let you know the results next month.

Our Annual North Western 4 Person Ambrose Event is coming up on Sunday 30th November and if last year's event is anything to go by this will be a very well attended day. Make sure you get your team together and your entry in to Glenn Cooke (0413 700628) Barry Flentjar (0419 150349) or Carole Mee (5429 1026) to ensure your place. We are always very grateful to our sponsors for their support of our club and look forward to seeing Nick Walsh from North Western heading up his own team this year.

Twilight Golf has commenced and we would love to welcome any new players (old and young, ladies and gents, people with carts and fit healthy people who walk) at this social evening of golf. Starting time is between 5.00 and 5.30 each Wednesday evening with a BBQ every few weeks.

Until next time, I wish you all long, straight drives and precise putting. Perhaps even a hole in one!

Essence of Chinese Medicine



Hannah Sutton

B. App. SC (Human Biology)
B. App. SC (Chinese Medicine)

www.essenceofchinesemedicine.com.au

HAYFEVER & ALLERGIES

*Are you dreading Hayfever season?
Why not try battling your seasonal allergies with Chinese Medicine?*

If you prefer a more natural approach to healthcare, Chinese Medicine is very effective in treating seasonal allergies such as hayfever. Acupuncture &/or herbal medicine can help alleviate hayfever symptoms during the active seasons but also be employed in the off seasons for preventative treatment.

Prevention is better than the Cure

Lancefield Day Spa Tuesday – 5.30pm to 8.00pm
14 High St, Lancefield Thursday – 9.30am to 8.00pm
Saturday – By Appointment

Phone for an appointment
(03) 5429 1732 / 0401 085 125

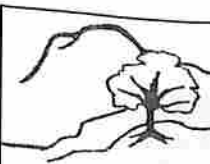
LANCEFIELD MECHANICS INSTITUTE

Hall Bookings & Information



0437 313 564

lancefieldhall@gmail.com



DEEP CREEK LANDCARE GROUP
Covering Lancefield - Romsey Districts

Meets second Monday Lancefield Hall 8:00pm.
All welcome Contacts: President: Robin 0428 315 846
Secretary: Ken 0404 886 580
email: ken.allender@bigpond.com
Website: www.deepcreeklandcare.org.au

manis, pedis & beauty

*For all appointments & enquiries -
Helena Richmond on 0437 365 700*

Treble "F"

TrebleF is taking a new direction. First on our list is the name,,,,, Feet, Fingers and Fragrance is what we are all about. A beautiful range of take home products will be shortly available to an ever growing list of clientele. All our natural products contain No Palm Oil or hidden nasties. Now we can feel that Spring is in the air, the time has come to spice up our lives and get that glow back ready for the seasons ahead. Second on our list is our hours,,,,, that means, due to private treatments regularly taking place, it is essential to contact us ahead for all appointments. We look forward to seeing you very soon.

"The Studio" 136 Main Road, Lancefield
For all appointments please contact
Helena on 0437365700
helena1@internode.on.net

WHATS ON

NOVEMBER

- | | | | |
|---------|--|----|--|
| 4 | Family Fun Day, Romsey Skate Park, Romsey | 16 | Relay Captains Cuppa, the Lancefield/Macedon Ranges 'Relay for Life' Committee meeting, Lancefield Corner Store |
| 4 | Classical Music Group, Lancefield Uniting Church, High Street, Lancefield | 17 | Macedon Ranges Council Business Network evening, Cope William Winery, Romsey |
| 5 | Kyneton Cup | 18 | Classical Music Group, Lancefield Uniting Church, High Street, Lancefield |
| 6 | St Mary's Primary School 'You Can Do It' information evening, St Mary's, Raglan Street, Lancefield | 19 | Combined Probus Club of Romsey and Lancefield Bus Trip to the Flemington Racecourse Rose Garden and lunch at the Restaurant. |
| 8 | Newham Garden Club Plant Sale and Celebrity Gnomes | 20 | Guild followed by Church Annual Meeting, Christ Church Hall, Lancefield |
| 8 | The Big Party, Rolling Stones at Hanging Rock | 23 | Healing Service Christ Church, Lancefield |
| 9 | Antiques & Collectables Display, Mechanics' Institute, Romsey | 25 | Lancefield & Romsey District Historical Society, Annual General Meeting, Courthouse, Lancefield |
| 9 | Remembrance Day Sunday, Christ Church Hall, Lancefield | 27 | Combined Probus Club of Romsey and Lancefield, St Mary's Church Hall, Main Street, Romsey |
| 12 | Macedon Ranges Film Society evening, Woodend Community Centre | 27 | Bingo, St Mary's Parish Hall, 85 Main Street, Romsey |
| 13 | Anglican Men's Society followed by Annual Meeting at Christ Church Hall, Lancefield | 28 | CWA, last meeting of the year followed by Christmas Lunch, Mechanics Hall, Lancefield |
| 13 | Bingo, St Mary's Parish Hall, 85 Main Street, Romsey | 30 | Lancefield Golf Club Annual North Western 4 Person Ambrose Event, Golf Club, Heddle Road, Lancefield |
| 14 | CWA Craft at MAD Gallery, High Street, Lancefield | | |
| 15 & 16 | Macedon Ranges Budburst Wine and Food Festival | | |
| 15 | St Mary's Primary School Drive-In Movie and Fireworks Display, Lancefield Park, Lancefield | | |
| 16 | Combined service at Christ Church, Lancefield | | |

DECEMBER

- | | |
|----|--|
| 6 | Christ Church Parish Christmas Street Stall, outside IGA Romsey, Main Street, Romsey |
| 12 | Christmas Carols |
| 16 | Community Christmas Lunch |

PROTECTING OUR BEAUTIFUL ELM TREES

Macedon Ranges Shire Council is in the midst of its annual treatment program to protect the shire's 2,700 elm trees from a serial pest known as the Elm Leaf Beetle.

These beautiful European trees have all but disappeared in Europe due to Dutch elm disease. They are still flourishing in Australia, but are prone to attack by the Elm Leaf Beetle, which defoliates and weakens mature trees. Trees that have been attacked present a distinctive round hole in their leaves.

While it is impossible to eradicate the beetle, Council has developed management program to protect significant stands of elms, predominantly in parks and avenues.

Treatment generally occurs from September to November and methods include spraying, and injecting the soil around the root zone of the tree with low toxicity insecticide. This safe and effective method of treating large trees tends to protect them for more than one season.

Council is a corporate member of Friends of the Elms Inc (FOTE), which maintains a state-wide elm register and helps local government and other bodies to manage threats to elm trees.

Residents with elm trees on their properties are strongly encouraged to register their trees by contacting FOTE via foteinc@hotmail.com or 0409 870 860.

For more information about elm trees in the shire or about Council's Elm Leaf Beetle management program, call (03) 5421 0811.



Tai Chi Classes

Saturdays at 11am. Beginners are most welcome at any time. Passive exercise & meditation for all ages that offer balance of mind & body for health, vitality and wellbeing.

Come and try a complimentary class.

Traditional Goju Ryu Karate

Children & Adult beginner classes for self-protection, fitness, discipline and confidence. Tuesdays & Thursdays.

Traditional Chinese

Medicine

Oriental Barefoot Doctors Clinic Incorporating massage and offering a holistic treatment for improved vitality, many health related issues, chronic & acute injuries.

- by appointment only

GIFT VOUCHERS AVAILABLE



Oil painting "Wu Lin Retreat" by Shou Mei Sumarac

WU LIN RETREAT

47 Sherwood Court
LANCEFIELD
VIC 3435

Phone: 54292122

Mob: 0417 350 398

Email: james@jamesumarac.com

COMING EVENTS

ART EXHIBITION -

"IMAGES FROM TWO WORLDS"
by Shou Mei



The exhibition will be at Wu Lin Retreat, Lancefield on 18th January 2015 1.00-5.00pm

Entertainment will include music by local musicians, a variety of local Macedon Ranges wines and Tai Chi demonstrations. All paintings will be available for purchase.

www.wulinretreat.com



Australia Post Lancefield SERVING THE COMMUNITY

OPEN Monday to Friday 9am to 5pm

Your Post Office offers a wide range of postal products as well as a comprehensive range of bill paying and banking services.

AUSTRALIA POST, PART OF EVERY DAY

Lancefield 3435 - (03) 5429 1222



Shannon McElhinney from
Lancefield Kindergarten

WATER WEEK **A WINNER** FOR LANCEFIELD

Lancefield's schools and kindergarten have been awarded grants from Western Water as part of Water Week celebrations.

Lancefield Kindergarten received a \$1,000 tank grant, St Mary's Primary School won a \$1000 Sammy's School Garden Grant, while Lancefield Primary School was awarded a \$2000 Frances' Environment Grant.

St Mary's Primary plans to use its grant for a watering system for the school garden.

Lancefield Primary will use its money for tubestock to help create a stormwater wetland with the Deep Creek

Landcare Group.

Lancefield Kindergarten will purchase a rainwater tank with its grant.

The three were among 14 schools, kinders and community groups in the Western Water region to receive an environment, school or community garden grant of up to \$2000.

National Water Week, which is in its 21st year, encourages communities to take action to protect our vital water sources to meet the needs of future generations.

TO ALL PET OWNERS REGARDING A **FIREWORKS DISPLAY** 15TH NOVEMBER

In conjunction with the St Mary's Primary School drive in movie event, a fireworks display will take place at the Lancefield Park on 15th November between 10pm and 11.30pm. Some animals may become agitated so please

make sure as a responsible pet owner that you supervise your animals.

For any enquiries please call Airwise Pyrotechnic Displays on 0409 387 757.