

Lancefield Mercury

MEMORIAL CHAPEL FOR LANCEFIELD CEMETERY



John Chisholm, Jenny Parks, Sharon Graham and Russell Davies on site with the design for the new Lancefield Cemetery memorial chapel.

On a very brisk, windy morning recently I met four members of the Lancefield Cemetery Trust – Jenny Parks, Sharon Graham, John Chisholm and Russell Davies – on the site of the Trust’s proposed memorial chapel. Jenny had brought the plans for the building, its position on the site and a ground-plan of the interior.

The Trust’s original conversations about this new building were gathering steam at the end of 2019, and have been delayed due to the events of the past almost-four years, which have affected so much in all our lives.

Now they are back on track – when soil tests and engineering inspections are complete, the plans themselves will be put out to tender. Then they will be well on the way to ground being broken.

The Trust hopes it can be completed in two years. Their first idea was to relocate an old church, but it was decided to start afresh, with a purpose-built chapel, simple and efficient.

The amenities block is already in place, saving a huge expense for this new build.

Sited close to the front gates, for ease of access, and on level ground, the chapel will be non-denominational. The Presbyterian Church, whose original manse is on the hill behind the cemetery, donated the land in the 1860s. Committee member John McCarthy’s great grandfather was on the original Trust.

The state school was sited on the opposite corner at Cemetery Road, where now only a shed remains. Trust committee member John Hemphill tells me there are original shingles under the iron roof that we can see today. The original Trust had two members from each denomination – Roman Catholic, Anglican and Uniting Church. As time went on and the Trust expanded its numbers, denominations were less of an issue.

The cemetery covers burial requirements for the local area: Romsey, Heskett, Springfield, Benloch, and Cobaw, as well as Lancefield itself, and is a Class B cemetery; that is dictated by the size of the population and region. Geelong and Bendigo have absorbed smaller cemeteries in their areas

MEMORIAL CHAPEL FOR LANCEFIELD CEMETERY


The chapel, fitting in style and colours with heritage designs, will seat 80 people – pew seating is already in storage, rescued from an old church. The design has generous windows along the north wall, with doors opening onto a covered verandah, for overflow of guests, and sunny spots for cups of tea and chats after services or meetings. There is a small kitchen planned for the north-western end of the building, and a store-room next to it for the technical equipment, screens for lectures and so on. The capacity for zoom connections, so normal now after the past four years, for people at a distance to attend the meetings or services virtually, is another feature, along with EFTPOS on site. In this modern day, the Trust will keep the community updated on the chapel progress on their new Facebook and Instagram pages.

The plan is to pave and landscape the area next to the chapel off the verandah. Funds will be raised in several ways – one of which is to sell a paver in memory of a loved one, with a dedication engraved on it, for the area north of the chapel. Or you can buy one as a donation. The cemetery has options for traditional burials, a lawn area as well as a niche wall, and a rose garden around the rotunda where ashes can be placed with a covering memorial plaque.

The committee regularly has working bees to maintain and update the grounds – a new rose garden is in place just inside the gate, with new fencing; roses have been replaced at the rotunda; and guard rails are now around the trees to protect them.



Father's Day and Mother's Day are busy times in the cemetery – families gather to celebrate lives, and catch up; the chapel will serve as a meeting house for them, with the kitchen available to serve snacks and hot drinks. On these days, the Trust brings out the books of recorded burials,





Romsey Dental

FAMILY DENTAL CARE


New
Patients
Welcome

Dentures
Tooth Whitening
Root Canal Treatment
Affordable Family Dentistry
Cosmetic Dentistry
Veterans Affairs
Mouthguards
Children's Dental Benefit Scheme
(\$1000 for eligible children)

41 Murphy Street Romsey Vic 3434
Email: admin@romseydental.com.au
www.romseydental.com

03 5429 3322



north western

PROPERTY VALUERS

Residential • Lifestyle • Commercial • Industrial • Rural

- Family Law
- Capital Gains Tax
- Rental Determination
- Superannuation Compliance
- Deceased Estates / Probate

P: 5429 1344

M: 0411 415 945

E: nick@northwestern.net.au

www.northwestern.net.au



all of which can be found easily, apart from graves of what were classed as “paupers”, whose exact locations remain a mystery, although occasionally a grave dig has had to be relocated, due to the grave-digger discovering a coffin already present on that site. Two of the “paupers” turn out to be described as “butcher’s wife and “swagman”, from which we can draw our own modern conclusions! Old records were less accurate than today.

It is hoped that school groups will come along to investigate the history of the area, possible connections through the houses they live in, the land it’s built on, and how their ancestors, or those of their classmates, came to be

in Lancefield, and buried, or remembered, in the cemetery. School groups have visited previously with challenges set to find the oldest grave.

More and more Melbourne people are coming to the cemetery to be buried – apart from the issue of cost in the city, there is also lack of space; in Lancefield Cemetery there is still plenty of room, and it’s a lovely peaceful spot, looking towards the northern hills, not too far from the city.

Have a look at Lancefield Cemetery on Facebook or email lancefieldcemeterytrust@gmail.com for more information.

Beth Child

An advertisement for Lyons Will wine. On the left, a bottle of Lyons Will Pinot Noir 2020 wine stands next to a snifter glass filled with red wine. The bottle label features the Lyons Will logo and text: "LYONS WILL EST. 1996", "Pinot Noir", "The Lyons Group | 2020", and "WINE OF AUSTRALIA". On the right, the Lyons Will logo (a lion with a crown and the initials LW) is positioned above the text "LYONS WILL" and "EST. 1996". At the bottom right, the text reads: "FAMILY OWNED. ESTATE GROWN. AN INTIMATE WINE TASTING EXPERIENCE. FRIDAY – SUNDAY, 11AM TO 5PM. 60 WHALANS TRACK, LANCEFIELD. 0403 725 826." The background is a blurred outdoor scene.

AVENUE OF HONOUR

The Romsey Lancefield Rotary Club Inc. and the Returned & Services League of Australia (RSL Romsey Lancefield – subbranch) continue to develop the Avenue of Honour between the townships of Romsey and Lancefield. The establishment of the Avenue of Honour commenced in 2008. Between 2011 and 2017 small plaques were unveiled by the local primary schools, local businesses and family members wishing to commemorate Australian servicemen and women who fought in battles or peace-keeping operations in theatres of war. The larger plaques or shadow boards were designed and manufactured locally, and supported through the Federal Government’s Department of Veteran Affairs Commemorative – Armistice Centenary Grants scheme. As part of this grant, seven Lone Pine Trees were provided to the local primary schools to plant in their school grounds.

The three large shadow boards commemorate the 100 years of the Armistice. They include a range of large metal cut-sculptures depicting the 4th Light Horse Brigade at Beersheba, the ANZAC Day landing and the Western Front campaigns. The unveiling by the Member for McEwen, the Right Honourable Rob Mitchell (MP) in 2021 was delayed due to COVID-19 restrictions.

The Romsey Lancefield Rotary Club Inc. and the RSL-sub-branch wish to thank those property owners who continue to diligently mow along this Avenue. Rotarians and local volunteers have spent many working bees over the years mowing, whipper-snipping, and eradicating weeds and



brambles, as well as removing rubbish, to further extend the visual appeal of this Avenue. This is an ongoing commitment.

More large shadow boards have been planned to commemorate the Vietnam War and the Huey helicopter, the role and commitment of Indigenous Australians in world wars, Australian Nurses, and the Malaya Campaign (particularly the role of No.1 squadron - Lincoln bombers).

A recent audit of the smaller plaques has shown some are warping due to the weather, other are damaged or have been stolen. This is very disappointing to those who sponsored these plaques to commemorate family members.

The Romsey Lancefield Rotary Club Inc. meets every fortnight on Thursdays (7 pm – 9 pm) at Soltan Pepper Restaurant. Community members interested in becoming Rotarians are very welcome to join us.

For further information please contact our Club Secretary - anne.collins@outlook.com.au - Anne Collins.

LANCEFIELD MERCURY INC.

A0045845D

Deadline for articles and advertisements is the 15th of the month. The Mercury is distributed by post and volunteer deliverers to all premises with a letter box in the Lancefield postal area at the start of the month. Copies of the paper can also be found at the Romsey Library.

The Lancefield Mercury is produced by volunteers as a service to the people of Lancefield.

The editorial committee reserves the right to edit articles for length and clarity.

Items for publication should be sent to editor3435@gmail.com – enquiries Andy Moore 0430 448 120

Enquiries about advertising: advertising3435@gmail.com – Ken Allender 0404 886 580

Check lancefieldmercury.org.au for general information about advertising and how to contribute articles, as well to see digital back copies.



Editorial Committee:

Andy Moore
 Craig Longmuir
 Karen Barr
 Fay Woodhouse
 Ken Allender
 Julianne Graham
 Beth Child
 Editorial Enquiries to
 Andy Moore 0430 448 120
 Advertising Enquiries to
 Ken Allender 0404 886 580.



Advertising Rates

One eighth page \$35
 One quarter page \$55
 Half page \$100
 Full page \$165

Rates for one year – 11 editions (no edition in January)

Annual 1/8 page \$280
 Annual 1/4 page \$360
 Annual 1/2 page \$650
 Annual full page \$1000

Colour Advertising:

Full page \$240 per edition
 1/2 page \$145 per edition
 1/4 Quarter page \$80 per edition

The Lancefield Mercury acknowledges the people of the Wurundjeri Woi Wurrung as the Traditional Custodians of the Country that includes Lancefield and Wil-im-ee Moor-ring. We pay our respects to Elders past and present, and extend that respect to all people of the First Nations. We recognise their continuing connection to the land and waters, and thank them for protecting this country since time immemorial.

LANCEFIELD PARK IN AUGUST

COMMUNITY FUNDING SCHEME GRANT

We are delighted to announce that our application to the MRSC Community Funding Scheme 2023/24 to refurbish the Laurie Green Pavilion Canteen was successful! Woo-hoo!!! The Community Funding Scheme is designed to support the work, growth and productivity of community groups in the Macedon Ranges. Receiving this Grant is an acknowledgement of the valuable service that our user groups provide to our local community. In particular would like to thank you to the lovely ladies from the Senior and Junior Footy Clubs, Lorraine Kraus and JoAnne Bumpstead for their guidance on what was needed to make the space safe and more efficient and the local tradies who provided advice and quotes - Vic Maintenance, Greenwood Electrics, and CMC Gas fitting. Our success was a group effort - now we have more work to do.

The CoM has also applied for second Grant to put towards the canteen, this time from the Bendigo Bank Community Enterprise Foundation™ who aim to make real changes, visible changes, in the places that matter to us most – in local communities. Fingers crossed that we are one of them and we can make great things happen in our canteen.

MASTER PLAN PREPARATION HAS BEGUN

The groundwork for a new Master Plan Lancefield Park Recreation Reserves has begun, starting with the preparation of a Request for Quotation Project Brief by Council, DEECA and LPRR-CoM. DEECA is involved because the Lancefield Park Recreation Reserve is Crown Land which is managed by the volunteer Committee of Management who report directly to DEECA.

We are seeking to engage a consultant to review the master plan documents in collaboration with Council, the Lancefield Park Committee of Management, DEECA, the community, reserve user groups and other identified

stakeholders to ensure that appropriate facilities, spaces and management practices are provided to meet the future sporting and recreational needs of both Lancefield Park Recreation Reserves.

CHANGES TO THE COMMITTEE OF MANAGEMENT (COM)

There have been a couple of changes to the LPRR-CoM with Jeff Smith representing the Bowling Club and Andrew Smith representing the Cricket Club resigning their positions due to other commitments. Both Clubs were able to find members willing to replace them. DEECA and the Minister have formally accepted the resignations and new nominations, and we are happy to welcome John Breese and Andrew Rickardt to the CoM. The CoM continues to have representation of the groups using the Park, which is important to ensure all voices are heard.

KEEPING THE PARK SAFE

After some recent mischief and damage to trees we have begun a major cleanup of the thicket of trees on the east side of the Park. Removing suckers, raising the canopy of the Elm trees, trimming shrubs and generally opening up the area. There is still some work to do, and we are planning another working bee to finish it off and make it a pleasant shady spot for summer picnics. Send an email to lancefieldpark@hotmail.com if you are interested in helping out at a working bee and providing ideas for this area.

Kathryn Lewis
 Chairperson
 Committee of Management
 Lancefield Park Recreation Reserves
 0476114811



RED DOOR BOOKS OF LANCEFIELD
 ABN 13 820 446 329

John Webb & Emma Stevens

34 High Street, Lancefield 3435
 (03) 54292566 fax(03) 5429 2577
 reddoorbooks@bigpond.com

WATER CARTAGE

12,000 LT LOADS – MAINS WATER

Servicing Lancefield and surrounding areas

Chris & Allison Woodroffe

Ph: 0354292466

Email: woodroffe@people.net.au

Web: www.woodroffeswaterservices.com.au

EMRBATA UPDATE

A VISION FOR THE FUTURE

EMRBATA's vision is for a vibrant, collaborative, and prosperous eastern corridor community which enhances liveability in the region.

Romsey Region Business and Tourism Association (RRBATA) now known as Eastern Macedon Ranges Business and Tourism Association (EMRBATA).

RRBATA conducted a Special General Meeting of the Association in July when the motion to change the organisation's name to Eastern Macedon Ranges Business and Tourism Association (EMRBATA) was unanimously supported. The name change better reflects the broad geographic spread of members and the region the Association advocates for. The re-brand was launched at the recent "Business Breakfast with Annie Smithers". A new logo will complement the fresh new website (<https://www.romseylancefieldregion.au/>). As was the case with RRBATA, EMRBATA remains committed to advocating for prosperity in the eastern corridor of the Macedon Ranges.

The Draft Romsey Structure Plan, the "roadmap" for Romsey's growth and development in coming decades, was recently released for community consultation. It follows last year's Emerging Options Paper. A new town

boundary and development vision has been outlined. EMRBATA (then RRBATA) provided a submission in response to last year's document and, at the time of writing this, has formed a subcommittee which will review the Draft Structure Plan (with input from the broader EMRBATA membership) and formulate a submission in response to it.

DANIHER'S DRIVE 2023 IS COMING TO ROMSEY AND LANCEFIELD

The annual MND fundraiser known as Daniher's Drive will make its way to Romsey and Lancefield on Thursday 12 October. Around 50 cars (including some classic models), and two buses, will transport around 240 participants on Day 1 of this car rally to raise funds for Motor Neurone Disease. They will stop in Romsey from 10am for morning tea, before progressing to Lancefield en route to Swan Hill for the night. Stay tuned to the Rag, Mercury, and EMRBATA Facebook for further details in coming weeks.

Visit <https://www.romseylancefieldregion.au/rrbata> for more information.

FROSTS SAWMILL

TIMBER & BUILDING SUPPLIES PTY LTD



Building Growth since 1966



For all of your Building & Fencing Needs



OPEN Mon-Fri 8am-5pm Sat 8.30am-2.30pm

Ph 5428 5156 Fax 5428 5144

8 Sawmill Lane MONEGEETTA

email: frostssawmill@bigpond.com www.frostssawmill.com.au

Discover
Better
Health



- Acupuncture •
- Myotherapy •
- Counselling •
- Kinesiology •
- Naturopathy •
- Chinese Medicine •
- Remedial Massage •
- Lymphatic Massage •

HEALTH SERVICES @ ROMSEY WELLNESS CENTRE

MONDAY 10am - 7.30pm	TUESDAY 9am - 3pm	WEDNESDAY 1pm - 7pm	THURSDAY 10am - 7.30pm	FRIDAY 9am - 3pm
-------------------------	----------------------	------------------------	---------------------------	---------------------



120 Main St Romsey (03) 5429 3610

www.insymmetry.com.au



RE-OPENING Early Sept

LANCEFIELD TOWN FRYER

NEW MANAGEMENT

NEW OPERATOR

NEW MENU

OPEN LUNCH / DINNER 11-30 TO 8PM

THURSDAY TO MONDAY

**Fish and chips, Hamburgers, Pizza, Kebabs and
Joom's special THAI takeaway**

**COME AND JOIN JOOM IN HER NEW
VENTURE**

FLAGSHIP STORM WASTE FACILITY NOMINATED

Council's flagship storm waste facility has been shortlisted in the EPA Waste Prevention & Reduction category at the 2023 Keep Australia Beautiful Victoria Tidy Towns & Cities Sustainability Awards.

On the award nomination, Council's CEO Bernie O'Sullivan said: "Council is thrilled to have the Romsey storm waste facility named as a finalist for another award, and we would again like to thank Emergency Recovery Victoria for the support in its implementation.

"This project was born out of the need to respond quickly to the widespread destruction caused by the June 2021 storms. Council recognises that the Macedon Ranges community strongly values environmental stewardship, recycling and 'green' solutions, so these were the principles we kept in mind when looking at solutions for the clean-up operation. "Our focus was to reduce green waste to zero by creating repurposed products for impacted Councils and communities.

"This flagship facility has created a new standard for operational recovery and is a model that can be applied by Councils across Victoria for any future disasters."

Winners are set to be announced at an awards night in October.

MANAGE YOUR SMALL PROPERTY

Land management information session for new, absentee, and small-acreage landholders on

Saturday 7 October, 9.30am-1pm, Romsey Community Hub, 96-100 Main Street.

If you are new to rural living, own a small hobby farm, or have plans for rural land where you don't currently live, you may be interested in attending a free land management information session run by Upper Deep Creek Landcare Network.

The session will cover a range of land management issues and solutions so landholders can plan and take action to better manage their properties. Visit www.landcarevic.org.au/groups/portphillipwesternport/udcln to register.

WASTE APP

Did you know that Council has its very own waste app? Some of its features include personalised bin collection calendar with optional reminders, a waste a-z of what goes where and further information about Council's waste and recycling services.

Visit mrsc.vic.gov.au/Waste-App or download from your app store.



MT WILLIAM
ADVANCED TREE NURSERY

**Growers of
Quality Trees and Shrubs**

539 West Goldie Road
Lancefield Vic 3435

Phone: (03) 5429 1517 Fax: (03) 5429 1055

Open Monday – Friday

Closed Sat-Sun and Public Holidays

 **A&P Tree Services**

Anthony De Fazio
Arborist

0417 059 969

PO Box 642 Lancefield VIC 3435

Professional commercial

info@aptreeservices.com.au

& residential tree maintenance

www.aptreeservices.com.au

Tree planting / transplanting

Rope & harness climbing

Tree pruning / removal

Stump removal

Cherry picker

Cabling & bracing

Confined space removal

Fully insured reliable service

Servicing the northern, south-east, central and north east Victoria



THE MOUNT PLAYERS HAPPENINGS

THE MOUNT PLAYERS "YOUTH THEATRE "

If you've got someone aged between 10 – 18 in your life who loves to perform, or wants to learn more stagecraft while having fun and making friends, then The Mount Players Youth Theatre classes could be the answer.

After being re-booted in Term 3, our Youth Theatre still have some spots available in Group B (ages 13-15) and C (ages 16-18) and limited spots in Group A (ages 10-12).

From exhilarating drama games and exercises to learning about lots of things theatrical, these sessions are the perfect place to unleash creativity and boost confidence on and off stage.

Under the experienced eyes of our talented teachers, Kerry Turpie and Mark Constable, you will have the opportunity to learn, grow and share the magic of theatre with like-minded individuals. For full details go to our website www.themountplayers.com - you will be welcomed with open arms.

After our riotous Shakespeare season, we are very excited to announce our final production for 2023, Peter Pan A Musical Adventure. The Mount Players are joining force with Boiler House Theatre Company to bring you a



truly magical, swashbuckling adventure the whole family will enjoy in November. More about this next month.

See you at the theatre!

By Karen Hunt



Mon	6.00am - 5.30pm
Tues	6.00am - 5.30pm
Wed	6.00am - 5.30pm
Thurs	6.00am - 5.30pm
Fri	6.00am - 5.30pm
Sat	7.00am - 3.30pm
Sun	7.00am - 3.30pm

Ph **5291 1340**
 20c High St Lancefield
www.lancefieldbakery.com






LANCEFIELD PROVIDORE

42 High Street, Lancefield
 5429 1969
info@lancefieldprovidore.com.au

FRUIT - VEG - DELI - FLOWERS - JUICE BAR



HECTIC, TO SAY THE LEAST

Term 3 has been hectic, to say the least - there seem to be so many special days and events that the days just fly by. The next four weeks will see our students participate in National Day of Action against Bullying and Violence, Book Week, Performing Arts 'Spooktacular', Father's Day Games Afternoon and our St Mary's Feast Day. I'm exhausted just thinking about it. But so far this term here's what's been happening.

PREP 100 DAYS

On Friday 21 July our Preps celebrated 100 days of school. What a momentous occasion it was for them. At the beginning of the day they were greeted by the 5/6 students who made a guard of honour for them to run through as they sang 'Happy 100 days of school.' At the end of the guard of honour were magnificent decorations thanks to the Prep teachers; lots of balloons and glittering banners marking 100 days. Their day was then jam-packed with activities based around 100. They decorated their special 100-day crowns, they had their photos taken by the North Central Review' and each child brought in 100 items which they had to count. Their 100 items were so creative - there were 100 macaroni, love hearts, sequins, ooshies, nails, gems and stickers, icypole sticks, lacquer bands, eyes, buttons, beads, flowers, coloured pencils and even 100 olives. Just amazing.

Throughout the day the students paraded their special 100 t-shirts to each other, made 100 fruit loop necklaces, decorated their 100 monsters (10 legs, arms etc), played the game 'Race to 100', made 100's and 1000's fairy bread, and did a 100-dot painting. They had lunch with their buddies and at the end of the day they took home a special 100 helium balloon, a pack of Smarties which read '100 days smarter' and a pack of bubbles. The 1/2 students even organised a little surprise for the Preps - they'd each written a letter to a Prep student to wish them well for their 100 days. What a fabulous day for all involved. A special thank you to Mrs Zarb, Mrs DeCarolis, Mrs Caton, Mrs Biderman and Ms Croft for all their hard work in preparing such

a memorable day for the students. Certainly it will be a treasured memory for many years to come.

HOUSES AT PARLIAMENT CAMPAIGN

At the end of last term we were contacted by Kate from Sunbury and Cobaw Community Health to ask whether we would like to join them in helping to make a big impact for Homelessness Week 2023.

So of course we said YES. Since beginning Term 3, students across all levels have joined us in making origami houses to add to the display. This is such an important issue in our society today and we are more than happy to build awareness within our local and wider community. All up we made 516 origami houses, a fantastic effort by all. These were added to the 6000 which were displayed at Parliament House on 2nd August for Homelessness Week. This was to highlight the urgent need for Governments to fix the housing crisis and end homelessness. The display at Parliament House was amazing, what an impact. Well done to all staff and students who participated, if we work together as communities, we can help bring about important changes.

PNF SCHOOL DISCO - CHRISTMAS IN JULY.

On Friday 28 July students dressed in their best Christmas colours and sparkles to attend the Parents and Friends School Disco. There was great excitement in the air as students got to see some of the decorations during assembly. At 5pm students assembled in all their glamour to enjoy a fabulous night of dance and games. There was popcorn, lollies and water for everyone, magical face painting, dance, laughter and good times for all. Even Santa put in an appearance. A huge thank you to Ash Collins and her team of wonderful volunteers for all their hard work in making this event so special and successful for our students. Just seeing the smiles on their faces made it all so worthwhile. We are very lucky to have such an active PnF and wonderful parent helpers to give our students so many great opportunities that

H.J & J.M Pickett

Master Painter – Interior and Exterior

Colour Consulting

Satisfaction Guaranteed

Long Term local resident

Phone Henry 0427 291 871

STEPHAN P KOSA & ASSOCIATES PTY LTD
ARCHITECTS, PLANNING & CONCILIATIONS



MELBOURNE OFFICE
27 Church Street, Hawthorn Vic 3122
P 9853 3513
M 0412 102 673
E skosa@kosaarchitects.com.au

MACEDON RANGES OFFICE
P.O Box 226, Lancefield, Vic 3435
W www.kosaarchitects.com.au





leave lasting memories of their time at St Mary's. So thank you one and all; your time, effort and enthusiasm is greatly appreciated by all of us.

NATIONAL TREE DAY PLANTING

On Monday 31 July our Year 5/6 Environment Group students participated in National Tree Day with the assistance of Ken and Phil from the Deep Creek Landcare Group. We planted trees along Chauncey St on the edge of the Senior Oval and at the back of the stage.

The trees planted included Goodenia ovata, native fuchsia and she-oaks. The students are now well-versed in tree planting after our last effort for the Queen's Jubilee Planting at the back of Lancefield Primary. Romina, Matilda, Summer, Emma, Meg

O, Ella-Rose, Sarah, Emmett, Nate and Riley worked tirelessly as they dug, planted, mulched, watered and tree guarded all the trees. We now look forward to watching these little beauties grow and hopefully form some sort of hedge over time.

A huge thank you to Emma Stevens (Junior Landcare Facilitator) for helping organise this event, Greater Western Water for donations of some of the trees, Deep Creek Landcare Group for donating the remainder of the trees plus tree guards and of course Ken Allender and Phil Severs (Deep Creek Landcare) for their knowledge and assistance. It was a great planting session enjoyed by all who participated, and we look forward to our continued involvement with Landcare in the future.

Jo Shannon (Community Liaison Leader)

Carpet Professionals - Over 23 years of experience

Floor by Floor

100% Australian made carpets
Supply and installation, Repairs
Steve 0421 775 256

CONCRETER

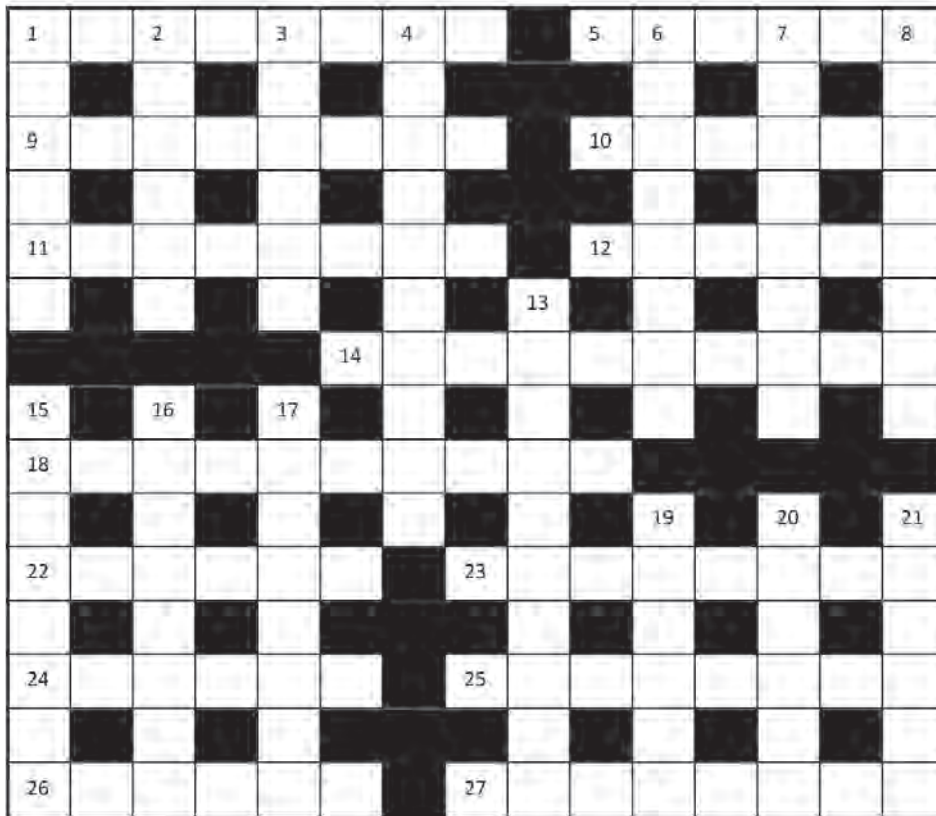
- ★ House Slabs
- ★ Factory and Shed Floors
- ★ Footings
- ★ General Concreting

HERITAGE HARDSCAPES

PHONE MICK
Ph: 5429 1893 Mob: 0412 547 152
Fax: 5429 2423
Lancefield

CRYPTIC CROSSWORD

Solution on page 34



Kevin Moysey the cross word maker

ACROSS

- 1 Drink under pressure (8)
- 5 Crows rave to opposite directions (6)
- 9 Mixed bar in wind yields antiseptic soap (8)
- 10 Middle deft and safety device pour out (6)
- 11 Votes again – but nothing changes (2-6)
- 12 Like marching or an arch (6)
- 14 These are stills but you'd swear they are moving (10)
- 18 Forcing submission when moving again (10)
- 22 Maybe a triple – but not these days (6)
- 23 Posture can be good or bad (8)
- 24 Caught in mesh what you took home (6)
- 25 Manipulates – perhaps using these? (8)
- 26 Spears like this are in short supply (6)
- 27 Agreed sounds the same as perfumed (9)

DOWN

- 1 Call for more when half with what's left of an apple (6)
- 2 Package is an average endless battery (6)
- 3 Revoked caused an emotional impact, but not at first (8)
- 4 Fists shine when used to show why one cannot be trusted (10)
- 6 Iffy? Anti? On the contrary, it's natural togetherness (8)
- 7 It has two sides, but they are always the same (8)
- 8 Shy or maybe woolly? (8)
- 13 Same nation could be coming from a source (10)
- 15 Cares for in advance? No, only acts (8)
- 16 Musical with less time and more fun (8)
- 17 Starch with ease for instructors (8)
- 19 Last earl title can be small (6)
- 20 This boat needs a log but doesn't keep one (6)
- 21 Ed left passed this way and stopped (6)

Romsey Beauty Spot

Shop 2

112 Main St

Romsey

PH: 5429 5499



0435 577 040

47 Dunsford Street
Lancefield



DOG OBEDIENCE CLUB

EIGHTEEN NEW PUPPIES JOINED US

Christmas is right around the corner. If you are looking at getting a four-legged friend start thinking about the right puppy for your family now. You're not going to be looking for a Great Dane or Saint Bernard if you live in an apartment. Or cattle dog, kelpie, border collie if you can't provide a yard, exercise, or stimulation they need. So, what can you do?

Google is a great place to start or talk to your local vet. Make sure you talk as a family; it's a huge commitment. Who will feed, water, walk and pick up poop? Consider if you want a puppy, (sleepless nights, toilet, and obedience training) or maybe an older dog. Consider your own age, your future plans or holidays.

Once you have decided on a puppy or older dog, you will need to consider breed. Pure breed, designer dog (think those that end in oodle) or even a rescue from an animal shelter (you would be saving a life). Do you want a smaller, bigger, long-haired, short-haired or hypoallergenic breed? High or low maintenance?

Is your home suitable for a puppy/dog? Do you own the home or are you renting? Will the landlord let you have one? Are fences high enough and secure? Some breeds such as huskies and kelpies are great jumpers others, like Jack Russells, are great escape artists.

Once decided on the breed, you will need to think about the supplies you need. Collar, lead, bedding, toys, and food.



Choose a local vet, and when ready bring your new family member home and enjoy unconditional love.

Visit our website www.macedonrangesdogclub.org.au, our Facebook page or email info@macedonrangesdogclub.org.au and we will contact you.

Remember a dog is for life not just Christmas.

Carol
Instructor/Treasurer MRODC



Pete's 'puters

For all your computer requirements

Computer Sales & Repairs

Systems Custom Built for *Your* Needs

Internet Connection Setup

Home & Small Business Networking

Tuition

Free Consultation & On-site Service

Call *Peter Quinn* on...

54 292229

0400 581 674

pfquinn3@bigpond.com

Operating in Lancefield over 15 years.

COLINS PROPERTY SERVICES

ABN 50 510 045 498

PH 54 291007 MOB 0409 444712

CARPENTRY CABINETS TILING
PLASTER REPAIRS PAINTING
WINDOW CLEANING
FLUE & CHIMNEY CLEANING
MOWING BRUSHCUTTING
ALL GENERAL MAINTENANCE

WE BUY

CAR - CARAVAN - MOTORHOME

0418 183 360

Cash - Bank Cheque - Finance Paid Out - EFT

SELL TODAY

LMCT 10132 SHD 0015048



WATTLES

There is a lot to celebrate about living in the beautiful Macedon Ranges. I reckon that the end of winter and the transition into spring is something to behold, and is worth celebrating. The birds are getting busy, building their nests and singing their lungs out; many of our deciduous trees are budding up and getting their new leaves, and the wattles are blooming! Bloomin' marvellous...as Peter Cundall used to say.

Wattles belong to the genus *Acacia* and were growing when South America, Africa and Australia formed Gondwana. Our early settlers originally applied the term “wattle” to those species with pliant branches suitable for building “wattle and daub” huts. There are 950 acacia species in Australia; they are our largest genus. With over 160 different wattles found in Victoria, and 14 of those found nowhere else in the world, you're almost guaranteed to see their fluffy yellow blossoms if you go outdoors during winter and spring. No wonder that September 1 is National Wattle Day.

Wattles are associated with the term “fast-growing and short-lived” because they are a pioneer plant; they spring up in disturbed areas or after fire, their nitrogen-fixing roots helping the soil, and their flowers and leafy branches brighten the bush and gardens in winter and spring. The fast-growing but short-lived species shouldn't be dismissed as being no good even though some wattles such as the Sallow wattle and Cootamundra wattle are environmental weeds which can crowd out other native species. In general, wattles are cheap, and a great plant to use to establish a garden, and make fast windbreak and privacy plants. Wattles provide great habitat and food for birds, insects, and some small marsupials. They have evolved a mutually supportive (symbiotic) relationship with ants. Wattles have small glands on each leaf that secrete a sugary liquid that ants love. This attracts ants into the plants to hunt for pests that may damage the trees. The ants have their own tricks – they allow some insect larvae to grow on the tree which also secrete sugars.

Wattles have other uses. Some such as Black Wattle (*a.*

mearnsii) and Green Wattle (*a. decurrens*) produce good supplies of bark for tanning leather. Aborigines use several species of wattle to make spears, boomerangs, digging sticks, and other implements with many species also used for food and medicine. The seeds of many wattles are edible and can be ground into a flour to make bread. Blackwood (*a. melanoxylon*) can grow to 45m but in our area more commonly grows to around 10 to 15m; the wood is very tough and is still sought after for making furniture. “Another use of our wattles, often overlooked, is their value as cover in many of the drier parts of Australia. Their removal from these areas, by one way or another has left the interior in a pitiful state, and unless a method can be found to re-establish some of these species, especially the Mulga, Australia might lose the use of this land for all time.¹”

In the Macedon Ranges we have a wide range of wattles. Along creeks our Landcare group often plant Blackwoods, Silver wattles (*a. dealbata*), Prickly Moses (*a. verticillata*) and Wirildas (*a. retinodes*). Some other indigenous wattles to consider in the garden include the Hop Wattle (*a. stricta*), Varnish Wattle (*a. verniciflua*) and Cinnamon Wattle (*a. leprosa*). For habitat, the Hedge wattle (*a. paradoxa*) with its thorns is hard to beat, for something smaller, a Gold Dust Wattle (*a. acinacca*) will reward or having our national flower, the Golden Wattle (*Acacia pycnantha*) in your own garden will reward you in its unique way with its profusion of large, scented golden balls in late winter and spring.

Deep Creek Landcare Group has nesting boxes for bats, birds, and phascogales for sale from \$25. We also have Myna bird traps to lend out. Annual Landcare membership is \$20 per family. You can follow us on Facebook, contact our President, Phil Severs (0476 324 000) or attend our monthly meetings in the Lancefield Mechanics Hall.

1 A Field Guide to Victorian Wattles. F. J. C. Rogers

(A correction to the August Landcare article: It is George Davidson who is known around Eden as the last of the “master whalers”, rather than his son-in-law, Norman Severs.)



ROLL OUT THE BARREL

With regard to the article in the August edition of the Lancefield Mercury titled “Over a Barrel” I believe I am the “complainant” mentioned, and as such I would like to set the record straight.

For the record, I never made a complaint about the half barrels. I simply submitted a request (for which I have not received a reply) to the MRSC for information regarding the placement of the barrels. What I asked the MRSC were the following questions: Was a permit applied for and issued prior to the placement of the half barrels? Has a permit been applied for and issued annually for the half barrels? Has the MRSC ever sighted evidence of public liability insurance required for the half barrels? If the answer is no to any of those questions the next question is - why?

In essence, the question to the MRSC is: Why do you give dispensations to the Lancefield Neighbourhood House that you don't give to other businesses or organisations?

This is an issue of public/pedestrian safety. Should the LNH hold no public liability insurance for the placement of the half barrels, and someone is injured by the half barrels the injured party would be then left to sue for medical or other costs. In the article the unknown author stated, “In 2014 permission was granted....” which, in my opinion, clearly means no permit was applied for or issued, instead,

a nod and a wink was exchanged to allow the barrels to be placed on the footpath.

And with respect to the photo of the barrels supplied to the editor, this is simply deception. This photo is eight or nine years old. The photo accompanying this letter is four weeks old. Then there is the issue of the survey which is just a smoke-screen to deflect interest away from the real issue which is compliance with MRSC Laws and Policies.

TW Bird, Lancefield

Here is the response from Rebecca Stockfeld, Director Planning and Environment, Macedon Ranges Shire Council

“Council recently met with Lancefield Neighbourhood House representatives and assessed the half wine barrels along High Street in consideration of public safety and ongoing maintenance if they were to remain. Council approved and funded (via a grant) the original implementation of the half wine barrels close to a decade ago, as part of a streetscape enhancement initiative by the neighbourhood house. On recent review, Council officers identified that the original permit for the wine barrels has expired. Council is working with the neighbourhood house on the future of the barrels.



Legal Advice made easy

- All Areas of Family Law
- Divorce
- Child Arrangements
- Asset Division
- Wills & Estates
- Probates
- Deceased Estates
- Power of Attorney

Level 1, 45 Hamilton Street, Gisborne
P: (03) 5428 8711 www.mrfl.com.au



What do rate rises mean for you?

TALK TO US
5427 4262

 **Mortgage Choice Woodend**

Mortgage Choice Pty Ltd. Australian Credit Licence 382869, and Smartline Operations Pty Ltd. Australian Credit Licence 385325, are owned by REA Group Ltd.



Council is taking a sensible risk-based approach to managing this, in consideration of the time the barrels have been installed and it being a community-led project. Where barrels require removal, Council will work collaboratively

with the neighbourhood house and businesses to identify opportunities which are in line with Council's Roadside and Footpath Trading Policy. These may include removable street furniture or other items that support traders."

LOCAL AGENTS, LOCAL KNOWLEDGE THE KEY TO A SUCCESSFUL SALE



Beverley Higgs

Ph: 0448 271 222 / 5427 1222
bhiggs@rtedgarmr.com.au



Paul Bohan

Ph: 0439 132 102 / 5428 8633
pbohan@rtedgarmr.com.au



Travis Cole

Ph: 0428 202 672 / 5427 1222
tcole@rtedgarmr.com.au

RT Edgar



100 DAYS OF SCHOOL

Every year we love celebrating with our preps when they reach the big milestone of 100 days of school. This year was no exception with lots of mini 100-year-olds at school. Assembly was quite a challenge with lots of walking sticks. Well done to our amazing prep students who are loving school and learning so much!

YEAR 6 TEAM DAY

On our first Year 6 Team Day our year 6 students spent the day in the Will-e-mee Moor-ing Centre and represented themselves and our school passionately. Our guest speaker, Danni (Department of Education Koori Education Support Officer) presented CUST (Community Understanding and Safety Training) and was blown away by the knowledge and understanding of our students. She also presented new information that prompted some excellent questions and thoughtful comments:

I learnt what a cool burn is; Aboriginals have totems, meaning they think a particular animal is sacred and they cannot eat or hunt this animal; something I learnt from the CUST training session was what the different colours and symbols of the Torres Strait Islander peoples flag meant; and I learnt that each mob had its own totems and they had to respect that animal and they couldn't hunt or eat it. Lucy and Charlie then took Danni on a tour to show her some of the Indigenous work and resources different classes have created.

Our next guest speaker was Sarah Solomon who shared her own stories and journey. Sarah is an occupational therapist who works with MND patients. She shared stories from her own life and work with her clients, including her achievements walking in the Northern Territory to raise money for MND, growing up in a small town, travelling and moving from Western Australia to Victoria. The feedback from our kids from Sarah's session included:

"I liked the saying she had 'no mistakes only lessons'"; "I felt very inspired today by the stories she told"; "it made me feel interested"; "today the guest speaker inspired me that even that we come from a small town we can do big things, I also loved her quotes"; "the guest speaker made me feel inspired to help people more often"; "I felt moved by Sarah and her story"; "they make me feel motivated"; "Sarah taught me I can do anything I want to do in life"; "and, she made me feel happy and inspired".

We spent the rest of our day identifying our character strengths, how they can help us work in teams and what strengths we could work on. Making videos and resources to pass wisdom onto future Year 6 teams, taking part in some fun activities where we shared our own skills and knowledge and all of this was wrapped up with morning tea, lunch and a goodie bag. Our goodie bag was kindly donated by our KESO (Koori Education Support officer) Renee McCaig and Berry Street donated the fidget tools. We would like to thank our Year 6 Team for their participation, enthusiasm during the day, and feedback. It was a fabulous day spent together.







The Lancefield Lodge



50 Main Road
Lancefield

The Lancefield Lodge MACEDON RANGES

WINE TOURS

Full-Day Wine Tour

\$199 per person

Includes Tastings & Lunch

- Visit boutique family-owned Vineyards
- Talk directly to artisan wine makers
- Taste the regions finest cold climate wines

For Enquiries Call

(03) 5429 1777



Swirl, Smell, Sip, Repeat!



Solar Systems

Battery Storage

Off Grid

Personalised energy solutions for your home or business,
complete design and installation to suit your needs.

Free consultation and quote.

Email: admin@arkecoenergy.com.au

Web: arkecoenergy.com.au

Beau Ferguson

0423087570

REC: 28811



S
E
L
L

B
U
Y

R
E
N
T



**102 Main Street
Romsey VIC 3434**

5429 5544

info@tccrealestate.com.au

www.tccrealestate.com.au

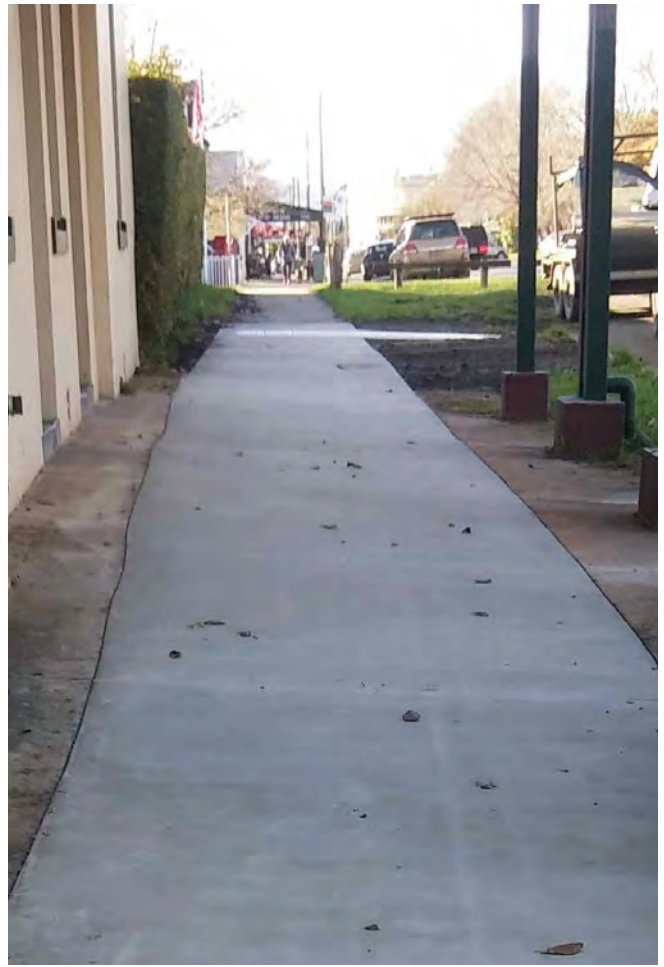


HIGH STREET FOOTPATH

Council recently completed footpath works along the north side of the High Street service road in Lancefield, improving connectivity for residents and visitors.

At 1.5m wide and 285m long, this new footpath completed a high-priority missing link within the town’s footpath network between Lancefield Primary School and the town centre, as identified in Council’s Shire-wide Footpath Plan.

Works started in mid-May this year and were completed in mid-July, as a key project outlined in Council’s 2022/23 footpath program. Council is progressing a range of infrastructure upgrades across the shire – keep an eye on our website, mrsc.vic.gov.au/works for updates.



Funeral Directors

Caring for the Lancefield community



A Personal Approach

TJ Scott & Son has been a trusted family business since 1938, with the experience and values to support you during difficult times.



TJ SCOTT & SON

FUNERAL DIRECTORS

KYNETON
5 Piper St
Kyneton
03 5422 6455

GISBORNE
6/50 Aitken St
Gisborne
03 5428 4155

KILMORE
23 Sydney St
Kilmore
03 5782 1112



PROPERTY

MANAGEMENT

Macedon
Ranges

PROPERTY SALES | RENTALS | COMMERCIAL

Locally owned & independent agents providing genuine advice and a professional service

26 HIGH STREET, LANCEFIELD
T 03 5429 1280
propertymr.com.au

KIM FORSYTH
0409 491 229

DAVID CONNELL
0429 168 475



HALL HAPPENINGS

Lancefield Mechanics' Institute

ONE OF OUR LONG-TIME REGULAR GROUPS

We have seen another busy month of events at the hall, as well as our regular groups which include – Line dancing on Monday mornings, Pilates on Tuesday morning and evening, Old Time Dancers on Tuesday afternoons and the Patchwork group on Thursday mornings.

This month we would like to feature one of our long-time regular groups, Lancefield Pilates, which celebrates 10 years of classes at the hall this year. Lancefield Pilates began in 2013 at the Lancefield Mechanics' Institute and is held in the Annex on Tuesday mornings at 9, Tuesday evening at 6.15pm with a 7pm class for teenagers. Zoom classes are also available on Tuesday evening. We are fortunate to have Megan Steers, a Lancefield local who is well qualified to run these classes, and following is a brief profile from Megan.



“I started teaching Pilates in London, back in the late 90’s after discovering the movement method at my gym. I thought that the gentle, progressive nature of the method married well with my primary career as a physiotherapist, so I embarked on gaining my Pilates qualification. Since then, I have had the privilege of traveling overseas to teach other physiotherapists about the application of Pilates in the clinical setting. I owned my own studio in Melbourne prior to moving to Lancefield. After a conversation with my neighbour, over our fence, I started teaching Pilates Mat Classes, in the Lancefield Mechanics Hall in 2013. The classes are a mix of strengthening, mobility, balance, and coordination exercises with a dash of laughter.

I recently returned to university and completed a

Graduate Diploma in Clinical Physiotherapy (Continence and Pelvic Health). Pilates fits very well into this field with the exercises being very safe for people with pelvic dysfunction.

My partner and I have 3 children and a Boxer. As a family, we are involved in the Lancefield Junior Football and Netball Club.”

SEPTEMBER EVENTS

Friday 1 Trivia Night – A Fundraising event for Lancefield Primary School

Saturday 2 Flower arranging workshop (morning)

- Joel Alforte of BNJ Events & Decoration

Monday 11 Landcare meeting (evening)

Sunday 17 Ghost Investigations & Spiritual Workshop

Friday 22 CWA local branch meeting (morning)

Lancefield Old Time Dance Group Friday night dance

Saturday 23 Little Treasures Market

Tuesday 26 Feed-It-Forward Community Luncheon

Wednesday 27 Lancefield Old Time Dance Group

- Tuesday session on Wednesday this week due to Community Luncheon

Saturday 30 Bringing a Taste of Lebanon to Lancefield –

Enjoy a Lebanon feast created by Amal Maloof, chef and former owner of Zumzum restaurant in Carlton, for The Lancefield Neighbourhood House.

For enquiries regarding events, classes or booking all or part of the hall complex please contact our Booking Officer at lancefieldhall@gmail.com or on 0437 313 564.

Bronwyn Wilson

Lancefield Mechanics' Institute Committee



**Thrumy's
Mini Digger**

For all aspects of earthworks

Tipper hire, Bobcat, Excavator, Dingo Digger,
Gravel deliveries, Post hole digging, Trenching, Driveway,
Site cuts, Rubbish Removal, Livestock burial.



Contact :

Gordon 0410008730
or
Steve 0407552469



Local, Reliable, Experienced

**Lancefield Mechanics Institute
Hall Bookings & Information**



0437 313 564 lancefieldhall@gmail.com

ROMSEY LIBRARY

DATES FOR YOUR DIARY

SEPTEMBER SCHOOL HOLIDAY PROGRAM

Call in to the library or visit our website – www.ncgrl.vic.gov.au to see what we have on to entertain the children these school holidays.

A FITTING CONNECTION

Whimsical Weaving Workshop

Tuesday September 5, 1-3PM

Bookings Essential – <https://goldfieldslibraries.com/romsey-events/> or 5429 3086

Come along to our sustainable version of the world's latest obsession 'weaving' and learn how easy it is to create your own whimsical wall hanging from things you have lying around the house. We'll show how to make your own loom, try various weaving techniques and knotting styles, and experiment with colour and texture for a beautiful, unique wall-hanging to take home. All resources are supplied but if you have a special item, piece of fabric or trim please bring it along! No prior skills required.

1000 BOOKS

Form great reading habits in young children by signing up to 1000 Books Before School (ongoing). 1000 Books Before

School supports parents and carers in developing a love of language and story in children aged 0-5 years. Sharing books with children sets them up for success with reading at school and improves their life outcomes and we will make it fun! Sign up at the library desk or online – ncgrl.vic.gov.au/1000books to start earning rewards, including a calico library bag, merit badges and other little goodies along the way.

SATURDAY STORYTIMES

10am on the Third Saturday of the month during the school term.

Join us on Saturday 21 October at 10am for songs, rhymes, stories and a fun craft.

A CURIOUS CIRCLE

Squeegee Painting

Thursday September 14, 6.30-8.30PM

Come along and join other adult women to connect and explore their curiosity in a creative way. Try out some new arts and crafts just for fun – no skill required.

Supper is provided and new members are welcome. Bookings are essential. For more information, please email romsey@ncgrl.vic.gov.au or phone us on 5429 3086.



The Better Approach

We work with you to find the best solution for your unique situation, and we put your needs first.

We value the people we work with, and we want to help you understand what's going on every step of the way.



We help families with their legal needs on Wills and Estate Planning, Divorce and Family Law, Conveyancing and Property, and Small Business requirements.

OUR OFFICES



GET IN TOUCH WITH OUR TEAM TODAY!

Phone 1300 043 103
Email admin@tbalaw.com.au
Website www.tbalaw.com.au

SCAN ME

WOODROOFES PETROLEUM

BULK UNLEADED PETROL & DIESEL

Your local fuel supplier, servicing
Lancefield and surrounding areas

Chris & Allison Woodroffe

Ph: 0354292466
Email: woodroffe@people.net.au
Web: www.woodroofespetroleum.com.au

Shane Foster's Electrical Pty Ltd

Rec 8751

Electrical Installations, Repairs and Maintenance

10 Foy St, Lancefield Vic 3435

Phone (03)5429 1433 Mobile 0419 541 914
Fax (03) 54292233
Email fostelec@telstra.com



**ST. MARY'S PARISH
LANCEFIELD & ROMSEY**

27-29 Chauncey Street Lancefield and 85 Main Road Romsey.
Fr. Martin Fleming C/- Woodend Presbytery 5427 2690
Presbytery office hours: Wednesday & Friday 8am-5pm -
lancefield@cam.org.au 5429 2130

SUNDAY MASS TO ALTERNATE

Sunday Mass will be celebrated at 9am and will alternate between Lancefield & Romsey. First and third Sundays of the month in Romsey; second, fourth and fifth Sundays of the month in Lancefield.

The Healing Mass will be celebrated at 10am in Romsey on the first Saturday of each month.

Baptisms are held at 2:30pm on the second and fourth Sundays of the month. Please contact the office for the next available date.

Bookings are now open for parish children to register for the Sacrament of Confirmation available to Year 6 and above.

Please contact the office if you would like to register your child.

Should a parishioner want to go to Reconciliation, please contact Fr. Martin directly at Woodend on 5427 2690 to make arrangement.

Please direct enquiries to the parish office on 5429 2130 or by email at lancefield@cam.org.au

For funeral arrangements, please contact Fr. Martin by email at woodend@cam.org.au or on 5427 2690.

TASTE GENES

Think coriander tastes like crushed beetle? Does broccoli make you squirm? It turns out, like eye or hair colour, how we taste certain food is passed down in our DNA. A study of more than 6,000 adults found that taste-related genes may play a role in determining food choices.

Researchers looked at 'polygenic taste scores' to show how genes impact our unique perception of taste – whether bitter, salty, sweet, sour, or umami (savory). They also looked at diet quality and heart health risk factors.

The study found participants scoring high for "umami" ate fewer vegetables, especially orange and red varieties like carrots and capsicums, whilst those with a high "bitter" score tended to eat fewer wholegrains, as many as two fewer servings a week.

Interestingly, participants with a higher 'sweet' score whom you would assume fared the worst, actually had lower triglyceride concentrations – a type of fat that can harden arteries and increase the risk of heart attack.

In other words, whilst we do not always choose foods that are best for us, we do always choose foods that taste good to us. So being able to hack our tastebuds, might just help us make healthful food choices. Food for thought indeed.

P.S. Mask the bitter taste of broccoli by serving it with a nutty satay sauce, a classic cheese sauce or stir through some pesto.

Prudence Williams, Accredited Practising Dietitian & Nutritionist. www.nutritionarch.com

CJ BROMLEY
ELECTRICAL Pty/Ltd.


For All Your Electrical Requirements

Split Systems, Garages, Rewires, Extensions
Switch Board Up Grades


SOLAR PV SYSTEMS

Design, installation & maintenance
colinjbrumley@gmail.com

M: 0419 580 380
Ph: 03 5429 5938



Rec 13897



Quick Fix Services

- Small Repairs & Construction
- Labour Hire
- Light Fabrication
- Home Maintenance

Fully Insured

ABN: 74 565 332 611

Colin Showler
Mob **0419 322 921**
Email c.showler@inbox.com
6 Gwen Place Lancefield 3435



Hearing Tests

Now available at Lancefield Country Practice

Meg Tucker has practiced audiology for many years and is pleased to offer a range of hearing services, including:

- ✓ FREE hearing tests & hearing aid trials
- ✓ Latest digital hearing technology
- ✓ Consultation on current amplification
- ✓ Swimmer & musicians' ear plugs



☎ 0477 297 389

AGED CARE VOLUNTEER VISITORS SCHEME

The Aged Care Volunteer Visitors Scheme (ACVVS) provides connections and companionship to those feeling isolated or lonely. The ACVVS is a free service available for those in residential aged care or Home Care Package recipients. Volunteers are matched to a recipient with similar interests and can be one-on-one or group visits to residential aged care homes or to people receiving a Home Care Package.

ACVVS is designed to connect with those who are or may feel socially isolated; do not have regular positive and engaged contact with friends or relatives; have frailty, mobility or communication impairment that prevents them from participating in social or leisure opportunities; or do not participate in social support group services funded by a Commonwealth-subsidised aged care program. The ACVVS team works with our volunteers to support, supervise and coordinate the volunteering program and promote Council's Positive Ageing Plan. Visit mrsc.vic.gov.au/ACVVS to learn more or to get involved.

PROPOSED CLOSURE OF RAGLAN STREET

For more than 30 years, St Mary's Primary School in Lancefield has had an arrangement whereby they close boom gates across Raglan Street (between Dunsford Street and Chauncey Street) during school times.

The school has made a request to Council and the Victorian Government to facilitate the permanent closure of this section of Raglan Street.

The school is experiencing consistent growth and is looking to the future to ensure that it can continue to meet the needs of the local communities of Lancefield, Romsey and the surrounding areas and meet the expectations of the community in relation to student safety.

The land upon which it sits is relatively modest in size compared to its current and projected enrolments. The school land on the west side of Raglan Street is currently used for sport and recreation purposes only, however with the projected growth, it is likely that it is going to be needed in the future to accommodate buildings which will serve as a hall and/or classrooms.

Submissions closed at 5pm on Monday 28 August 2023, unfortunately missing the Mercury deadline for the August edition.

ADVERTISEMENT

Mary-Anne Thomas MP LABOR MEMBER FOR MACEDON

As your local Member of Parliament I am keen to hear from the community and assist with any State Government matter.

Mary-Anne Thomas



A: Shop 14, Nexus Centre, 9 Goode Street, Gisborne, VIC 3437

P: 5428 2138 E: mary-anne.thomas@parliament.vic.gov.au

W: www.mary-annethomas.com.au

[MaryAnneMacedon](https://www.facebook.com/MaryAnneMacedon) [maryannethomasmp](https://www.instagram.com/maryannethomasmp)

Authorised by MA Thomas, Shop 14, Nexus Centre, 9 Goode Street, Gisborne

BUSTERS DRIVEWAY MAINTENANCE

Driveway Maintenance
90 H/P Tractor with 3 way Box Grater

Bobcat and Tipper Hire

Post Hole Augers

Grass Slashing
60in Zero Turn Finishing Mower

Stump Grinder

Contact: Buster Richmond
0419-334507 Lancefield

CARERS WEEK WORKSHOP

Do you take better care of the person you are caring for than yourself? If the answer is yes, you will benefit from this workshop. We will explore the reasons why your health and wellbeing are so important and give you strategies to help better care for yourself. The workshop is open to all families and carers, especially those who find it difficult to care for themselves. The workshop will include why caring for ourselves is so important, what stops us caring for ourselves and making a self-care commitment.

Council is working in collaboration with other service providers to share our resources and provide support for you and your family. The date is Wednesday 11 October at 10:30am-12.30pm.

Guest Speaker Sally Camilleri from Carers Victoria will be speaking at Dromkeen Gallery 1012 Kilmore Road, Riddells Creek. To register email hshort@mrsc.vic.gov.au or call 5422 0333.

HAVE YOUR SAY IN COUNCIL'S EMERGENCY MANAGEMENT PLAN

Every council in Victoria is required to have a Municipal Emergency Management Plan (MEMP) and review it every three years. These plans outline the arrangements for the planning, response, and recovery from significant emergencies – such as storms, floods, and fires – for the municipality.

Council, emergency services and partners all play a role in developing these plans, as organisations that have a huge role to play in emergency management locally. These plans are also aimed at capturing the unique needs of the local community and how resilience, households and businesses play a role. Council welcomes your input and invite you to participate in a short survey on what you think matters when it comes to planning for emergencies in Macedon Ranges.

Visit mrsc.vic.gov.au/youresay - this survey closes on 1 October 2023.

BEYOND ELECTRICAL DATA & SOLAR

PAUL YOUR LOCAL "A" GRADE ELECTRICIAN

NO JOB TOO BIG or TOO SMALL
DOMESTIC, INDUSTRIAL & COMMERCIAL

0419 399 590

- ☆ RELIABLE *24 HRS
- ☆ ECO SMART APPROVED
- ☆ POLICE CHECKED
- ☆ NO OBLIGATION QUOTE

SERVICING THE LOCAL DISTRICT & SURROUNDS

FOR OVER 20YRS
NECA Member
REC: 26561



BETTER LIVING OSTEO

- Back and neck pain • Headaches
- Shoulder pain and injuries
- Hip and knee pain • Tennis and golfers elbow
- Pregnancy related pelvic pain

Call us now on (03) 4311 1876
to find out if Osteopathy is right for you!

Anthony Mokbel
(B.AppSc(Comp.Med), M.Osteo)
Osteopath

Samantha Baxter
(B.AppSc(Comp.Med), B.AppSc(Osteo))
Osteopath

Open 6 days. Online Booking available
126A Main Street Romsey

www.betterlivingosteo.com.au

/BETTERLIVINGOSTEO



**ANGLICAN PARISH OF
LANCEFIELD WITH ROMSEY**
Rev. Matthew Browne Ph: 0401 615 099

A GREAT TIME

Regular weekly Church Services are in Romsey at 9am and Lancefield at 10:30am each Sunday.

The weekly Prayer Meeting is in the Church in Lancefield on Thursdays at 9. Bible Study is at Christ Church Lancefield on Thursday at 10:30am. Enjoy a cuppa while spending time pondering the book of Revelations.

Monthly Parish Community Lunches are held on the second Saturday of the month at Christ Church Hall, Lancefield. Next lunch will be on Saturday 9 September at 12 noon. The day is free to all and everyone is very welcome to join us for good, homemade food and a great time, meet new people and chat with old friends. Our annual hydrangea pruning cuttings are on sale for just \$2/bunch of 10 cuttings.

St Paul's OpShop is open Fridays 12:30pm-4pm and Saturdays 10am-1pm. The Op Shop is on the Parish Web site for viewing of the week's specials. Your donations of clothing, bric-a-brac, craft items, books and good quality working toys can be left during open hours. These items are much appreciated, but donations left outside of the shop hours can result in weather damage. Unfortunately, as a result, those items need to be sent to the tip. Please note that owing to regulations we cannot accept electrical goods, prams, baby cots, furniture or mattresses. Your ongoing support and donations are much valued.



**LANCEFIELD COUNTRY
WOMEN'S ASSOCIATION**
President: Angela Turner, Secretary: Maybelle Briggs,
Treasurer: Sandra Stevens, lancefieldcwa@gmail.com

HAVE A LOVELY FATHER'S DAY

Well, by the time that you read this, term three will be drawing to a close.

The last term holidays for the year sixes at primary school. How the school year has flown.

Many students will be hoping that they get into their secondary school of choice - we wish them all the best.

Now, are you ready for more facts about our country of study, Namibia?

Namibia has the world's largest population of free-range black rhinos and a third of the planet's cheetahs. Its highest mountain is the Brandberg massif. The desert weather conditions sound very appealing while we are in very cold Lancefield winter!

We hope that dads, granddads, great-granddads and stepdads all have a lovely Father's Day.

Until next time.

Maybelle



**SHERIDAN
BLINDS & AWNINGS**

Your Local Window Coverings
Specialists

**Roller Blinds * Curtains * Roman Blinds *
Shutters * Awnings * E Zips * Cafe Blinds**

Contact David or Lee for a professional obligation
fee quote and colour consult

0419034941 * 0417526844

sheridanblinds.com.au

info@sheridanblinds.com.au







1800 011 141
www.greensweep.com.au



Green Sweep

Caring for you and the environment

Your local home cleaning specialists
How good would it feel to come home to a fresh clean house all of the time? Well now you can get that feeling whenever you want it.

Let us take care of all your cleaning needs allowing you to spend your precious spare time doing more important things.

Services offered

- Regular weekly or fortnightly cleans
- Spring cleans
- Exit / bond cleans
- Window cleaning
- Commercial cleaning

Products used

We only use eco-friendly products inside your home, allowing you and your family to breathe easier, while reducing the impact on the environment.

Security and privacy
Your privacy and security is important to us, we are fully insured and security screened for your peace of mind, our services are discreet, efficient and affordable.

Ask us how we can help you today
For an obligation free quote call us on **1800 011 141** or visit our website www.greensweep.com.au.



We're proud to be
Eco Friendly



Refer a regular client and receive one free regular clean*

*Conditions apply



Find us on Facebook
[Facebook.com/Greensweepteam](https://www.facebook.com/Greensweepteam)



BIRDSONG CAFÉ IN KINGLAKE ON THE MENU

The Romsey/Lancefield Probus Club is for active retirees or semi-retired people to meet, relax and enjoy the welcoming company of those at the same stage of life. There is a regular monthly meeting with guest speakers, morning tea and time to socialise with the other members. Each month there is a regular outing for lunch held at different venues around the region as well as trips throughout the year. This year the club is visiting Western Australia in October. There is a coffee morning at 10am every Friday at the Lancefield Corner Store where members meet for a chat and a bit of fun.

In August the club was addressed by Michelle Balthazar from the Romsey Neighbourhood House talking about some of their new initiatives. In September the speaker will be Jenny Stillman who is one of the members of the award winning Romsey Eco therapy Park committee, who had a vision 14 years ago to transform a neglected historic school site into a regionally significant place to improve health and wellness in nature, for people of all ages and abilities. Jenny is also the president of EMRBATA (Eastern Macedon Ranges Business and Tourism Association) which is a not-for-profit

interest group comprising local business operators, whose primary task is to promote business and tourism in the Romsey region.

The outing for August was a one-day bus tour visiting the Overwrought Sculpture Garden and Gallery at Daylesford with lunch at the Bowls Club and then onto the Mill Market. Great weather and company ensured a very enjoyable day. In September the club is off to the Birdsong Café in Kinglake with the Antique Perennial Nursery and Fern Acres Nursery close by.

The next meeting of the Romsey/Lancefield Probus Club for 2023 will be on Thursday 28 September at 10am in St. Mary's Catholic Church Hall Main Street Romsey.

We are a friendly, welcoming group from diverse backgrounds with a variety of interests and we'd love to meet you! Feel free to attend a meeting as a visitor.

President: Noreen 0401 579 180

Secretary: Betty 0409359048

Visit our website www.rlprobus.org.au for more information.

Ochre Medical Centre Lancefield

Here for your health

We are now a mixed-billing practice

Ph: 03 5429 1362

A/H number is 1300 60 60 24 – Nurse-On-Call

Online bookings at:
ochrehealth.com.au

17 High St, Lancefield

We now offer:

Podiatry, Audiology, Physiotherapy, Dietitian

Operating Hours Monday, Tuesday 8.30- 8pm
Wednesday, Thursday 8.30 to 6pm
Friday 8.30 to 5pm
Saturday 8.30 to 1pm

For bookings and further information go to
<https://ochrehealth.com.au/medical-centre-lancefield/>

For updates and information
follow us on Facebook

Ochre
MEDICAL CENTRE
Lancefield

D.C. WELDING & STEEL FABRICATION

WELDING

(ON-SITE / OFF-SITE)

**MIG, TIG, ARC, MILD STEEL,
STAINLESS STEEL, CAST IRON**

TRAILER REPAIRS & MODIFICATIONS

**D.L.I. CERTIFIED
25 YEARS INDUSTRY EXPERIENCE
FULLY INSURED**

0448 752 638

COMMUNITY INVESTMENT PROGRAM

Thanks to the better banking of our Community Bank customers, we can reinvest our local profits back into the community, so that great local initiatives get funding. Applications for Round 1 of the 2023-24 Community Investment Program have now closed. The Board of Directors of Community Bank Lancefield and Romsey are presently considering all applications with notifications to be issued in October.

To make sure your community group is registered updates on future grants and sponsorship programs, email Lauren Harrison via cip@lrcfsl.com.au.

VACANCY ON THE BOARD OF DIRECTORS

Lancefield & Romsey Community Financial Services Ltd is a franchisee of the Bendigo & Adelaide Bank Ltd and operates the locally owned Community Banks of Lancefield and Romsey. We currently have a vacancy on the Board and invite interested people to apply to join like-minded volunteers in this highly active community organisation. The Community Bank is a major contributor to the amenity and financial wellbeing of our Lancefield & Romsey communities and has distributed more than \$2.5 million in grants and sponsorships to local groups over the last 22 years.

The company is seeking applicants with specific

experience in corporate and financial affairs and business management with accounting/business qualifications. Applicants will understand the needs of the local community together with an appreciation of the impact of technology and online banking on customer engagement. This role may be of interest to persons who are either working or retired. Positions are voluntary and therefore a strong commitment to community affairs is essential. Various training options are available to successful candidates.

The ability to invest your time and energy is key, with a minimum commitment of at least 10 hours per month, including a monthly Board meeting and membership in Board committees.

Expressions of Interest, with a brief resume, should be emailed to companysec@lrcfsl.com.au or sent to the Company Secretary at PO Box 30, Lancefield, 3435.

DID YOU KNOW?

We have recently purchased a projector and portable screen, which is available for use by local community groups, along with our Community Bank banners, tear drop signs, marquees, and sanitiser stations. Call into our branch and speak to our wonderful team about how we can assist with your next event.



STREATFEILD & CO
PSYCHOLOGY

Our team of Psychologists, Mental Health Social Workers and Therapists support children, young people, families, couples, adults, and older adults across the lifespan.

CONTACT US
Email admin@streatpsych.com or call 0439 341 849 for more information.

 [estreatpsych](https://www.instagram.com/streatpsych)
 [Streatfeild & Co Psychology](https://www.facebook.com/Streatfeild%20&%20Co%20Psychology)

www.streatpsych.com



THE LANCEFIELD GOLF CLUB

GIVE GOLF A GO
LADIES GOLF LESSONS

FRIDAY 3RD OF NOVEMBER 2023
LESSONS CONTINUE OVER 3 WEEKS
4PM-5PM

ONLY \$30

Conducted by Helen Dennett
(accredited golf Australia community instructor)

For expression of interest please contact Di Rohde
PH: 0419 172 130
Email: derohde@yahoo.com

Community Bank
Lancefield and Romsey

Your town. Your bank.

Everything you need

We deliver the products and technology you'd expect from a big bank, plus the personal service you wouldn't.

Feel good about who you bank with. Try Bendigo.

Find out more. Call 5429 5526 or search Bendigo Bank Lancefield or Romsey.

Home loans

Accounts

Credit cards

Personal loans

Business

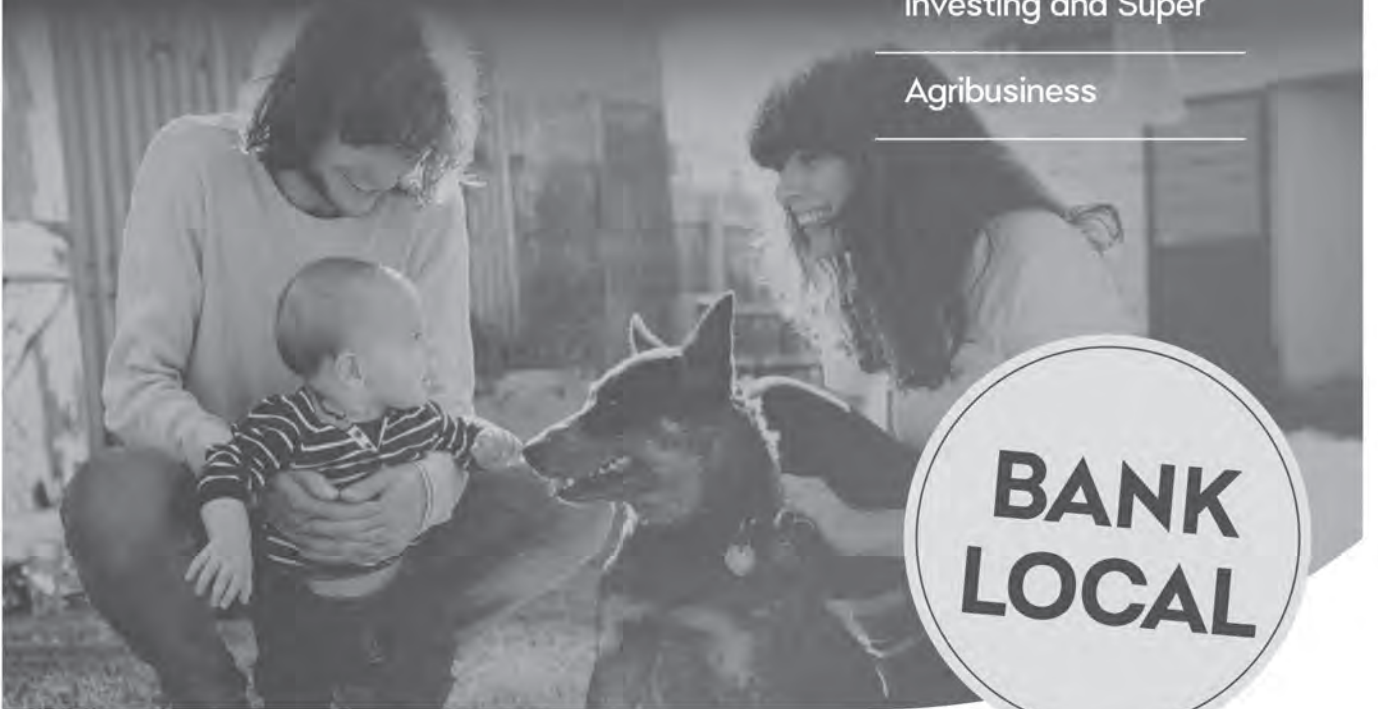
Insurance

Financial planning

Travel and
International

Investing and Super

Agribusiness



B Bendigo Bank

*All lending products are subject to the Bank's normal lending criteria. Terms, conditions, fees and charges apply and may be varied at any time. Bendigo and Adelaide Bank Limited ABN 11 068 049 178, AFSL/Australian Credit Licence 237879. A1455028 OUT_30872094 14/08/2023

CELEBRATING SENIORS

The Victorian Seniors Festival is close and it's time to celebrate. Following the positive response from last year, Council will again present 'celebration boxes' to 25 older residents who have made significant contributions to the community. Take this opportunity to say thank you, celebrate the achievements of our older residents, and recognise the important contribution they make to our local community. If you know an older person in the shire who has made a difference, nominate them today. Residents of the Macedon Ranges aged over 65 (or Aboriginal and Torres Strait Islander peoples aged over

50) are eligible to be nominated.

Nominees will be considered based on their contribution to the local community, how they demonstrate active ageing and promote a positive image of older people. Examples may include contributions to a community groups, family life or work, keeping mentally and physically active, making a difference to the environment, or as a volunteer champion.

To submit a nomination or find out more visit mrsc.vic.gov.au/seniorsfestival or call 5422 0333.

Nominations are open from now until Sunday 1 October 2023.

ROMSEY VETERINARY SURGERY

 **5429 5711**

 romseyvet@apiam.com.au  romseyvet.com.au
80 Main Street Romsey VIC 3434



JACKSON'S TOWING SERVICE

0427 516 071

BREAK DOWN AND TRADE TOWING

FREE CAR REMOVALS

**FREE REMOVAL OF OLD OR INCOMPLETE
CAR BODIES, 4X4 AND LIGHT TRUCKS**

BRAD JACKSON
16 Dundas Street,
Lancefield VIC. 3435

ABN 24 530 765 922
Fully Insured

The Wood Bloke

Deliveries

Gas Cylinders 45kg - no rental charges

Thursday deliveries to Romsey & Lancefield

Wood - Delivered Romsey / Lancefield

www.lancefieldfirewood.com.au

Ph Manny 0418-570-249

Email sales@lancefieldfirewood.com.au

Credit Cards Accepted

547 Lancefield Tooborac Rd Lancefield

Follow us in Facebook for the latest updates.



NEW KINDERGARTEN AND MCH CENTRE

Improved early years services are a step closer for Lancefield, with planning progressing on a new kindergarten and Maternal and Child Health (MCH) building due to open in 2024.

Funded and led by the Victorian Government's Victorian School Building Authority (VSBA), the purpose-built three-room kindergarten and MCH facility will be largely built offsite, through modular construction and later transported to its home at 76A High Street.

Council's Director Community, Maria Weiss, said the new centre was one of Council's priority projects resulting from the Municipal Early Years plan (CREATE), which identified a need for additional contemporary, fit-for-purpose early years infrastructure in Lancefield. "There has been increased demand in Lancefield and surrounding areas due to population growth, the roll-out of 15 hours of funded kindergarten for three-year-olds, and the recently announced

increase to 30 hours of pre-prep for four-year-olds," she said. "This new centre will provide more rooms to allow for future kinder participants and alleviate some of the pressure on surrounding areas of the shire. It will also see the return of a Maternal and Child Health service to the town, which we know is something residents are very much looking forward to."

The project is supported by a \$3 million VSBA Building Blocks Capacity Grant and once complete, Council will manage the new kindergarten and MCH services. Council has allocated \$16,000 in the 2023-24 Budget to ensure the new centre is fully furnished, and \$100,000 to ensure the build has improved environmental and sustainable design elements to make it more comfortable for children and staff, and more efficient and cost-effective to run in the long term.

Visit mrsc.vic.gov.au/lancefieldkinder for information and updates as the project progresses.

MIGHTY MOUSE ROOFING
 Mark Mouser - 0419 562 605
 License # 48263

- ❖ Specialist in metal fascia and gutter, roofing, flashings and downpipes
- ❖ Repairs, renewals, extensions, new houses and sheds

Lancefield Equine Clinic
 Clinic & Hospital Facility
03 5429 1609 **EMERGENCY**
 office.lec@bigpond.com **0409 229 408**
 3422 Melbourne-Lancefield Rd Lancefield 3435 VIC



Kustom Flooring & Interior

Floor Grinding and Self-Levelling to Concrete Surfaces, plus Timber and Painted Floors.

Ron Davis **0418 871 332**
 kustomflooringinterior@gmail.com

KRISTINE'S PAINTING SERVICE
 PAINTER & DECORATOR

- Interior and Exterior Painting
- Special Effects
- Colour Consulting
- Pensioner Discounts Available
- Free Quotes
- Kitchen Benchtop & Cupboard Conversion

Phone: Kristine - 0432 181 136



Australia Post Lancefield 3435 - (03) 5429 1222

Australia Post Lancefield
SERVING THE COMMUNITY
 OPEN Monday to Friday 9am to 5pm
 Your Post Office offers a wide range of postal products as well as a comprehensive range of bill paying and banking services.

Everyone Matters



FROM THE DESK OF PASTOR TIM

Encourage Church. Pastor Tim Emonson, Worship Service Sunday 10am, 7 Mitchell Court Romsey.
Ph 5429 6327 E: office@encouragechurch.com.au W: encouragechurch.com.au

WHICH TEAM DO YOU SUPPORT?

This year for Father's Day at Encourage Church, we are having a wear your favourite sports team colours day. Whatever sport you follow – footy, cricket, basketball or even the Tour de France – you can wear your favourite team jumper, jersey, shirt, scarf, or other item of clothing. It will certainly be a colourful morning! Unless we all barrack for Collingwood...

It has been said, that in Victoria the AFL is our unofficial religion. I have been known to compare going to the footy as a form of "church". Well, when I go to the footy I sit on the hard seats, sing the team song (when we win), clap, stand up and raise my hands when the team does something well, have people asking for my money (I will avoid preaching about the betting ads here), teach my children the ways of the truth (Collingwood is best), and we let the umpire know when we think that they have done something wrong.

Sounds like people's perceptions of church, and speaking as pastor people are happy to let me know when I haven't done something right! Although, at Encourage Church our seats are padded seats, not pews, and we don't bombard people with money requests.

So, there are a number of parallels between going to the footy and going to church and it raises the question, which team are you on? Are you on the team captained by Jesus, or

are you fighting against the Saviour of the world? Making no choice, is actually making a choice – as Jesus said, "Anyone who isn't with me opposes me, and anyone who isn't working with me is actually working against me." (Matthew 12:30, NLT).

Come along to one of our Sunday morning services at 10am and check out our seats – everyone is welcome!

CRYPTIC CROSSWORD ANSWERS

E	S	P	R	E	S	S	O		R	A	V	E	N	S					
N		A		V		H			F		Q		H						
C	A	R	B	O	L	I	C		E	F	F	U	S	E					
O		C		K		F			I		A		E						
R	E	E	L	E	C	T	S		I	N	S	T	E	P					
E		L		D		I			E		I		I						
									A	N	I	M	A	T	I	O	N	S	
P		O		T		E			A		Y		N		H				
R	E	P	R	E	S	S	I	N	G										
E		E		A		S			A		L		D		C				
T	H	R	I	C	E				A	T	T	I	T	U	D	E			
E		E		H					I		T		G		A				
N		E	T	T	E	D			C	O	N	T	R	O	L	S			
D		T		R					A		N		L		U		E		
S		P		A		R		S	E		A		S	S	E	N	T	E	D



Rec 95 Member of NECA (National Electrical & Communications Association)
Established 1914



RESIDENTIAL • COMMERCIAL • INDUSTRIAL

- POWER POINTS
- LIGHT FITTINGS
- CEILING FANS

- SWITCHBOARD UPGRADES
- SAFETY SWITCHES
- DATA & TELEPHONE

- ALARM SYSTEMS & CCTV
- UNDERGROUND POWER
- SHED WIRING

FOR ALL YOUR ELECTRICAL NEEDS

Paul Hobden
3 Doutney Court Sunbury
0402 074 146

Simon Choate
1 Park Street Lancefield
0418 489 766

www.greenwoodelectrical.net.au

info@greenwoodelectrical.net.au

Lancefield Oktoberfest

Saturday 7th October 2023 Laurie Green Pavillion, Lancefield Park

Join us and enjoy

- Delicious German food
- Live entertainment
- Competitions
- Prizes and giveaways

Tickets \$25pp

(Entry includes collectable German beer stein and your first beer!)

Tickets available from

Lost Watering Hole The Lancefield Brewery



Proudly supported by

LOST
WATERING
HOLE
THE LANCEFIELD BREWERY

A great place
to find yourself.

Brewery & Restaurant

8-10 The Crescent, Lancefield
Enquiries call 4410 1054

LMSEPT23

