

# Forge Theatre and Arts Hub



## Technical Specifications Forge Theatre and Arts Hub 80 McKean St, Bairnsdale

Current as of January 2022

**Benn Sargood**  
**Theatre Technician**  
**Ph: 0400 015 656**  
**Email: [benns@egipps.vic.gov.au](mailto:benns@egipps.vic.gov.au)**

---

# Venue Specifications

## Seating Capacity

Total Capacity: **362**. *Flexible seating to accommodate wheelchairs in row AA may reduce this capacity.*

*Please refer to the attached Seating Plan – [APPENDIX C](#)*

## Production Access

Loading Bay Height	3.9 metres
Loading Bay Width	2.9 metres
Height from Street	1.1 metres

## Stage Dimensions

Proscenium height	3.99m (max)
Proscenium width	14.60m
Stage depth	7.80m
Stage area in m <sup>2</sup>	113.88m <sup>2</sup>
Stage height above Stalls	1.12m
Stage height above Pit floor	2.24m

*Please refer to the attached Stage Plan – [APPENDIX A](#)*

# Technical Equipment Lists

## Lighting

- Martin M1 Lighting Console (2048 Parameters)
- Martin M2GO Lighting Console (2048 Parameters)
- 36 dimmer channels (Jands)
- 2 x LSC DMX Splitter
- 18 x ETC Source4 15-30
- 27 x ETC Source4 Fresnel (With Barndoors)
- 12 x ETC Source4 JR 25-50
- 4 x Selecon Pacific 25-50
- 7 x Chauvet Ovation C-640FC
- 16 x Par 56 Par Cans
- 10 x 18 x 3watt LED Cans (3ch)
- 7 x 1watt LED Cans (5ch)
- 4 x Pinspot
- 1 x Selecon Pacific 80V 1200W Follow Spot
- 1 x 18" Mirror ball with Motor
- 6 x Iris to suit Source4
- 6 x Gobo Holder to suit Source4
- 1 x Antari HZ400 Haze Machine

Please refer to the Standard Rig plan – [APPENDIX B](#)

## Audio

- |   |  |
|---|--|
| <ul style="list-style-type: none"> <li>• 1 x DiGiCo SD9 Stealth Core 2 Digital Mixing Console (V1455)</li> <li>• 2 x DiGiCo D-Rack 32/16 Racks, one permanently DSPS the other floating where required</li> <li>• 1 x D&amp;B Audiotechnik 25S-D FOH System</li> <li>• 1 x D&amp;B Audiotechnik 21S Subwoofer</li> <li>• 3 x D&amp;B Audiotechnik 5S Front Fill Speakers</li> <li>• 1 x Xilica Solaro FOH Processing</li> <li>• 6 x RCF 310A MK3 powered speakers</li> <li>• 2 x JBL EON15G2</li> <li>• 4 x Sennheiser EW300G3 B Band Hand Held Microphones</li> <li>• 4 x Sennheiser EW300G3 B Band TX Belt pack</li> <li>• 4 x DPA 4188 Directional Headsets to Suit Sennheiser Units</li> <li>• 1 x Shure MX412/S Lectern Mic</li> <li>• 4 x Shure SM57 microphone</li> <li>• 3 x Shure Beta58 microphone</li> </ul> | <ul style="list-style-type: none"> <li>• 1 x Shure PG Drum Pack (PG52/2xPG81/3xPG56)</li> <li>• 1 x Sennheiser e902 Kick Drum Microphone</li> <li>• 2 x Sennheiser e906 Instrument Microphone</li> <li>• 3 x Sennheiser e904 Clip On Drum Microphone</li> <li>• 2 x Rode NT5 condenser microphone</li> <li>• 2 x Rode M5 condenser microphone</li> <li>• 1 x Beyer Dynamic M88 Vocal/Kick Drum microphone</li> <li>• 12 x Tall Boom arm microphone stands</li> <li>• 4 x Medium Boom arm microphone stands</li> <li>• 2 x Short Boom arm microphone stands</li> <li>• 4 x K&amp;M Round Base Straight Stand</li> <li>• 4 x DBX Active DI</li> <li>• 3 x BSS AR133 Active DI</li> <li>• 1 x 12/4 15m multicore with drop box</li> <li>• 1 x 12way 10m multicore with drop box</li> <li>• 2 x Denon DNC-620 CD Player</li> </ul> |
|---|--|

### **Audio Visual / Conference Equipment**

- 1 x Epson EB-L1505UNHL
- 1 x ELPLU03 Short Throw Lens
- 1 x Blackmagic Production Studio 4K
- 1 x Blackmagic UHD Broadcast Monitor
- 4 x Decimator MD-HX HDMI to SDI X-converter
- 2 x NEC NP3250 Projector
- 1 x Panasonic DVD Player
- 1 x 6' x 8' Fastfold projector screen front and rear projection surfaces available
- 1 x Tripod 16:9 (1450mm x 800mm) Projector Screen
- 1 x NEC V260X Projector
- 1 x Whiteboard

### **Fixed Equipment**

FOH loudspeaker system:

- 2 x D&B Audiotechnik 24S-D flown in LR configuration
- 2 x D&B Audiotechnik 21S Dual 21" Flown Behind LR
- 3 x D&B Audiotechnik 5S Lipfill Mounted in LCR or Mono Configuration

House equalization on FOH speakers from FOH Console, able to be bypassed or over patched

### **Tie Lines**

First named location has female XLRs, second named location has male XLRs:

- 40 x DSOP – Control Position (8ret)
- 20 x Orchestra Pit – Control Position (4ret)

### **Sound & AV Facilities - General Information**

The sound facilities include:

A permanently installed FOH loudspeaker system with dedicated system processor

Portable equipment, including microphones, stands, cables, mixing console, replay devices, portable self-powered speakers (suitable for stage fold back or use in foyers etc as a main PA).

A flexible tie line system for use with in house equipment or touring sound systems.

Comprehensive patching facilities in control room/mix position and DSPS.

Performance relay and induction loop distribution system with inputs for acoustic pickup (house monitoring microphone) and mixing console if necessary.

# Venue Information

## Flies

The Forge Theatre is **NOT** equipped with a scenery flying system.

- 3 x 9m Tri Truss LX bars, each on 2 chain blocks each (½ tonne)

## Miscellaneous

- 1 x US tabs sysem drawn from PS
- 1 x MS tabs system drawn from PS
- 1 x white Cyc wall

## Access Equipment

- 1 x JLG 20MVL Elevated Work Platform
- 1 x Aluminium A-Frame 5m
- 1 x Aluminium A-Frame 1.6 metres
- 1 x Extension Aluminium A-Frame Ladder
- 1 x Aluminium A-Frame 2m

## 3 Phase Power Distribution

- 1 x 32A DS Prompt Side
- 1 x 40A Bio Box
- 1 x 32A Bio Box
- 2 x 40A Tech Store (Audio Only)

## Cat 5 Links

- 2 x Bio Box to FOH Lighting Bar
- 2 x Audio Control to Stage (DSPS)
- 2 x DSPS to DSOP
- 2 x DSPS to Orchestra Bar

## HD-SDI Links

- FOH-LX1
- FOH-SMD

## Green (Sound & AV) Power

- 2 x 40A 3 Phase outlets located in Tech Store DSPS
- 3 x Twofa's in Prompt Corner
- 1 x Twofa Rear Proscenium DSPS
- 1 x Twofa Rear Proscenium DSOP
- 3 x Twofa Orchestra Pit
- 3 x Twofa FOH Mix Position
- 2 x Twofa Bio Box
- 1 x Twofa Cyc Wall PS
- 1 x Twofa Cyc Wall OP

### **Production Communication**

- Clearcom Freespeak2 Base 2 Base Station (5 Pack Licence)
- 1 x Freespeak2 Antennae
- 3 x Freespeak2 Beltpack
- 5 x Jands E100 single channel belt packs with single/double muff headset
- Dressing room paging from wired handheld in prompt corner.
- Backstage performance relay.

### **CCTV**

- 2 x HD Cameras mounted above Audio control position (Colour and IR)
- IR and Colour Monitors at SMD
- Monitors situated in Dressing Rooms 1 & 2, PS and OP Wing, Orch Pit, Office and Foyer
- Show relay feed to Dressing Rooms 1 & 2
- Show relay feed to Staff Office

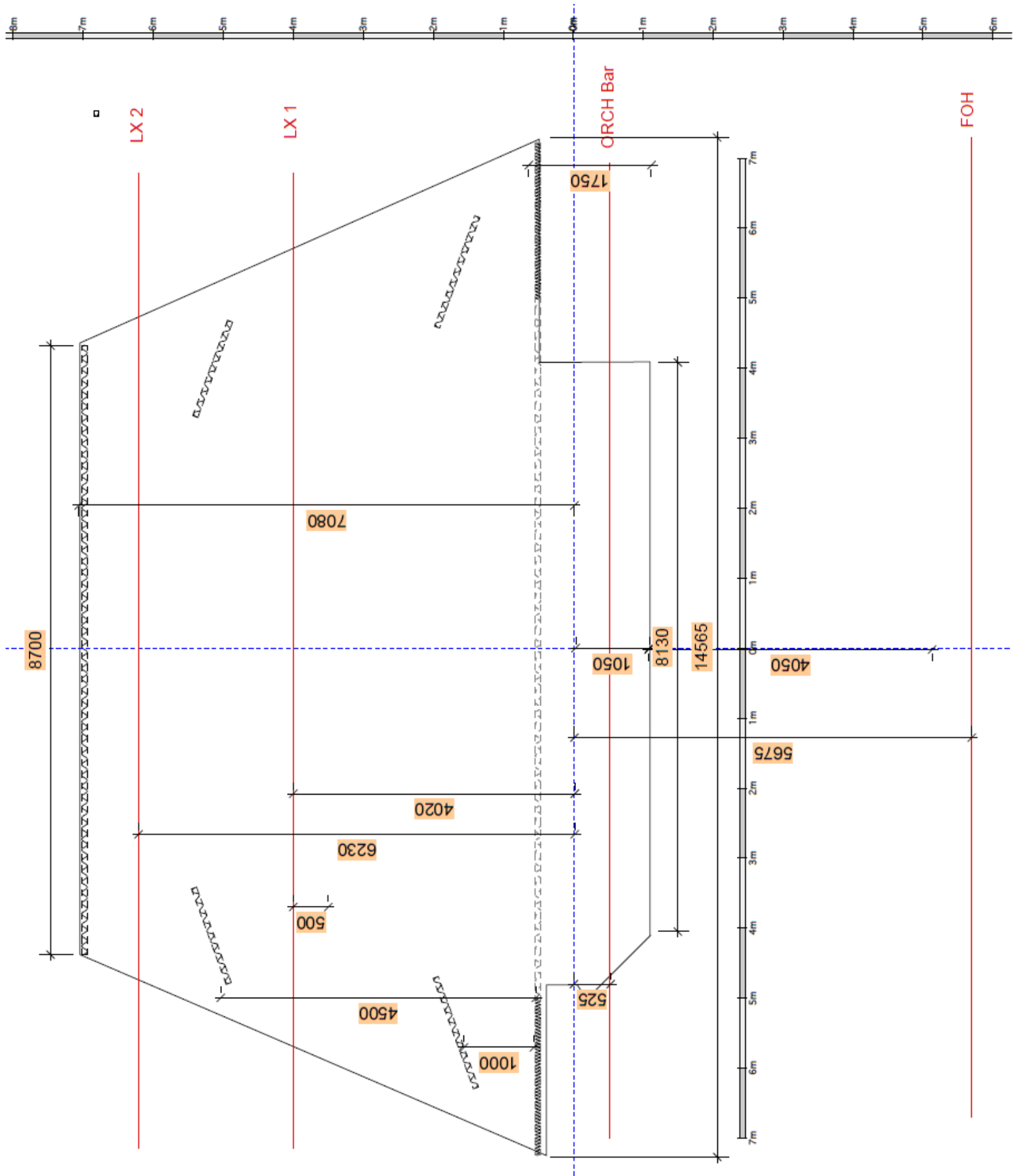
### **Dressing Rooms**

- 2 x Dressing Rooms for 15-20 people.
- McKean Room can be hired for additional dressing room space if required.

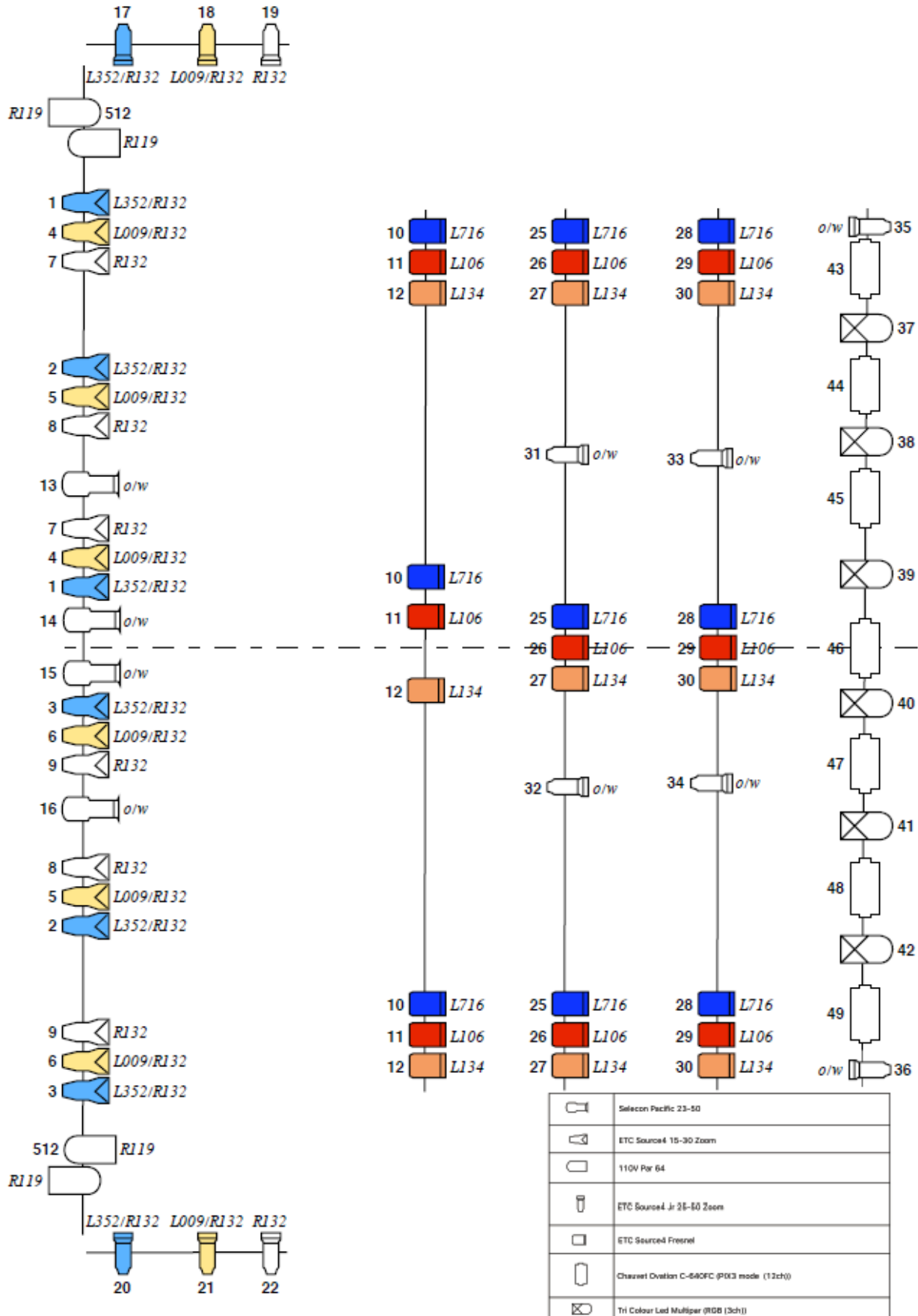
### **Ancillary Equipment**

- 40 x function chairs
- 10 x rectangular folding tables 183cm x 76cm
- 1 x Yamaha Vivace 5'4" Ebony Baby Grand Piano
- 1 x Lectern

## APPENDIX A – STAGE FLOOR PLAN & LIGHTING LAYOUT



## APPENDIX B – STANDARD LIGHTING RIG





## APPENDIX C – SEATING PLAN

