

BEMM RIVER FORESHORE MANAGEMENT PLAN



April 2014

Copies and Further Information

This plan may be downloaded from the East Gippsland Shire website (www.eastgippsland.vic.gov.au) or offices.

Additional information (including copies of this plan) can be obtained by contacting Anthony Nelson by email at feedback@egipps.vic.gov.au or by phone on (03) 5153 9500.

This project was overseen by representatives from agencies including; East Gippsland Shire Council, Gippsland Ports, Parks Victoria, Department of Environment and Primary Industries, and the Gippsland Coastal Board.

TABLE OF CONTENTS

1	INTRODUCTION.....	1
1.1	WHAT IS A FORESHORE MANAGEMENT PLAN & WHAT WILL IT DO?.....	1
2	PUBLIC CONSULTATION AND SUBMISSIONS TO DATE.....	2
2.1	ISSUES AND OPPORTUNITIES PAPER.....	2
2.2	DRAFT FORESHORE MANAGEMENT PLAN.....	2
2.3	LUDERICK POINT CONCEPT PLAN.....	3
2.4	BEMM RIVER FORESHORE MANAGEMENT PLAN.....	3
3	VISION AND MANAGEMENT OBJECTIVE.....	4
4	STUDY AREA.....	5
4.1	VALUES.....	5
4.2	ISSUES.....	5
5	FORESHORE FEATURES AND VALUES.....	6
5.1	NATURAL VALUES.....	6
5.2	RECREATION VALUES.....	6
5.3	CULTURAL / HISTORICAL VALUES.....	6
6	CURRENT MANAGEMENT ISSUES.....	7
6.1	BOATING FACILITIES AND ACCESS.....	7
6.2	RECREATION AND TOURISM MANAGEMENT.....	7
6.3	NATURAL RESOURCE AND CULTURAL HERITAGE MANAGEMENT.....	7
7	PROPOSED MANAGEMENT STRATEGIES.....	8
7.1	MANAGEMENT OBJECTIVES.....	8
7.2	MANAGEMENT STRATEGIES.....	8
7.3	DETAILED ZONES AND MANAGEMENT OBJECTIVES – NORTHERN AND WESTERN FORESHORES.....	9
7.4	DETAILED ZONES AND MANAGEMENT OBJECTIVES – FINGERLING JETTY, LUDERICK POINT AND MEMORIAL PARK.....	10
7.5	DETAILED ZONES AND MANAGEMENT OBJECTIVES – DOLLY’S GARDEN AND BEMM RIVER ACCESS POINT.....	11
7.6	DETAILED PROPOSED MANAGEMENT STRATEGIES – WESTERN FORESHORE.....	12
7.7	DETAILED PROPOSED MANAGEMENT STRATEGIES – FINGERLING JETTY.....	13
7.8	DETAILED PROPOSED MANAGEMENT STRATEGIES – BETWEEN FINGERLING JETTY AND MEMORIAL PARK.....	14
7.9	DETAILED PROPOSED MANAGEMENT STRATEGIES – LUDERICK POINT MEMORIAL PARK.....	15
7.10	DETAILED PROPOSED MANAGEMENT STRATEGIES – LUDERICK POINT ENTRANCE ROAD.....	16
7.11	DETAILED PROPOSED MANAGEMENT STRATEGIES – LUDERICK POINT.....	17
7.12	DETAILED PROPOSED MANAGEMENT STRATEGIES – NORTHERN FORESHORE.....	18
7.13	DETAILED PROPOSED MANAGEMENT STRATEGIES – RIVER ACCESS POINT.....	19
7.14	DETAILED PROPOSED MANAGEMENT STRATEGIES – DOLLY’S GARDEN ENTRANCE.....	21
7.15	DETAILED PROPOSED MANAGEMENT STRATEGIES – DOLLY’S GARDEN.....	22
8	LUDERICK POINT BOAT RAMP AND JETTY.....	25
8.1	NEXT STEPS.....	25
8.2	INTERIM CONCEPT PLAN.....	25
9	LAND STATUS AND MANAGEMENT RESPONSIBILITY.....	27
9.1	LAND STATUS AND MANAGEMENT RESPONSIBILITY - EGSC.....	28
9.2	LAND STATUS AND MANAGEMENT RESPONSIBILITY - DEPI.....	29
9.3	LAND STATUS AND MANAGEMENT RESPONSIBILITY – PARKS VICTORIA.....	30
9.4	LAND STATUS AND MANAGEMENT RESPONSIBILITY - EGCCMA.....	31
10	LEGISLATION, POLICIES AND PLANS.....	32

1 INTRODUCTION

The East Gippsland Shire Council has prepared a Foreshore Management Plan for Bemm River, including Luderick Point, Fingerling Jetty, Dolly's Garden, and the access walkway to the Bemm River from Sydenham Parade.

This Foreshore Management Plan has been developed with a high level of input from community groups as well as other government bodies, and aims to give all parties a clear expectation of management roles, responsibilities, and proposed activities over a 15 year period, with a structured review carried out every 5 years.

1.1 What is a Foreshore Management Plan & what will it do?

Foreshore Management Plans are developed in accordance with the *Coastal Management Act 1995* and align with other State policies and documents including the guiding principles of the Victorian Coastal Strategy (2008), the Urban Design Framework for Bemm River (2007), and relevant Coastal Action Plans.

Foreshore Management Plans are public documents that set out the day to day local land management requirements for foreshore areas managed by East Gippsland Shire Council and other land managers. These requirements cover management activities that are achievable within the timeframe of the plan and are appropriate for the particular foreshore area and environment.

The **Bemm River Foreshore Management Plan** provides clear and agreed directions for management of the foreshore areas adjoining the Bemm River township, including Dolly's Garden and the Bemm River access walkway. The overarching management **objective** is to maintain the character of Bemm River whilst recognising the **periodic high use of foreshore areas, supporting recreational activities, and maintaining important environmental values.**

Preparation of the **Bemm River Foreshore Management Plan** has sought to:

- consult with management agencies, stakeholder groups and the community;
- clarify boundaries for on-ground management responsibility;
- identify the current condition, values and management issues surrounding the foreshore;
- identify management strategies to protect and enhance the foreshore values; and
- establish an agreed position with all management agencies on the future use and development of the foreshore areas.



2 PUBLIC CONSULTATION AND SUBMISSIONS TO DATE

This Foreshore Management Plan has been developed with a high level of valuable input from community groups as well as other government bodies, and aims to give all parties a clear expectation of management roles, responsibilities and proposed activities. Four important stages in the development of the Bemm River Foreshore Management Plan have been undertaken:

- Preparation and release of an Issues and Opportunities paper;
- Preparation, release and integration of public comment on a Draft Foreshore Management Plan;
- Preparation and release of the final Bemm River Foreshore Management Plan; and
- Preparation of construction plans for the upgrade of boat ramp and jetty facilities at Luderick Point.

2.1 Issues and Opportunities Paper

An Issues and Opportunities Paper was prepared to identify key stakeholders and areas of management responsibility, identify important values and issues within the foreshore area, and engage with the community to explore their thoughts, views, and opinions of the foreshore.

The Bemm River Foreshore Management Plan Issues and Opportunities Paper was released in October 2012 for public comment. Submissions were received up until November 30th 2012 by East Gippsland Shire Council.

The public submissions received include a broad range of issues which generally related to the themes presented in the Issues and Opportunities Paper and can be broadly summarised as follows:

- The need to address the functionality, form, and maintenance of the Luderick Point and Fingerling jetties and associated boat ramps;
- Access arrangements for residents and visitors to the different areas of the foreshore, including the potential for the development of a shared pathway network;
- General facility upgrades (e.g. bins, picnic tables, BBQ's, road and car park surfaces, line markings, signage), additions and maintenance; and
- Increased recreational fishing facilities.

It is important to note that the Issues and Opportunities Paper presented to the Bemm River community for public comment presented 'issues' and did not propose a suite of solutions or actions to be carried out within the study area. As a result, the feedback received from the community represented the community's different views on future management and activities along the foreshore over the life of the Foreshore Management Plan, and not agreement or disagreement with an approach presented by the East Gippsland Shire Council.

2.2 Draft Foreshore Management Plan

Following the public consultation period of the Issues and Opportunities Paper a Draft Foreshore Management Plan was prepared, this plan considered;

- Comments received from the initial community site visit and discussion (8 attendees);
- Comments from the more informal 'Issues Walk and Talk' session held prior to the release of the Issues and Opportunities Paper (15 attendees); and
- Six (6) written submissions received by East Gippsland Shire Council.

The Draft Bemm River Foreshore Management Plan was released on 28th February 2013 for public comment. Submissions were received up until April 5th 2013 by East Gippsland Shire Council.

The public comments and submissions received were generally related to a single issue; the form or type of jetty proposed for Luderick Point.

Recurrent comments throughout discussions with the community, and through written submissions included:

- boat ramp design and requirements;
- prevailing environmental conditions and an appropriate design response to these to ensure the functionality of the boat launching and retrieval facility;
- the advantages and disadvantages of a number of jetty types and configurations;
- ongoing maintenance requirements required for the boat ramp and jetty;
- other facilities at Luderick Point including disabled parking, fish cleaning tables, lights and signage; and
- extension of the proposed pathway network.

2.3 Luderick Point Concept Plan

The preparation of a concept plan for the upgrade of boat ramp and jetty facility at Luderick Point were identified as a key component of the Bemm River Foreshore Management Plan.

A concept plan for the proposed upgrade to the boat launching and retrieval facilities at Luderick Point was developed to support proposed actions within the foreshore management plan. This concept plan was released on August 7th 2013 for public comment. Submissions were received up until August 28th 2013 by East Gippsland Shire Council. A public meeting was also held to present the conceptual design option for the facility to the community.

Four written public submissions were received following the release of the concept plan and reflect the issues previously discussed with the community including:

- boat ramp design and requirements;
- prevailing environmental conditions;
- the advantages and disadvantages of the proposed configuration; and
- ongoing maintenance requirements required for the boat ramp and jetty.

Following the public consultation period, community and agency feedback has been incorporated into a interim concept plan. This plan will be supplemented by further detailed technical investigations.

2.4 Bemm River Foreshore Management Plan

Following the public consultation period of the Draft Foreshore Management Plan and Luderick Point Concept Plan, the final Bemm River Foreshore Management Plan has been prepared, this plan considers;

- Comments recorded from the community meeting and release of the Luderick Point Concept Plan;
- Eight (8) written submissions received by East Gippsland Shire Council relating to the Draft Foreshore Management Plan;
- Comments recorded from the community meeting, prior to the release of the Luderick Point Concept Plan; and
- Four (4) written submissions received by East Gippsland Shire Council relating to the Luderick Point Concept Plan.



3 VISION AND MANAGEMENT OBJECTIVE



4 STUDY AREA

The town of Bemm River is located on the shores of Sydenham Inlet on the East Gippsland coast. The Bemm River, listed as a Victorian Heritage River, passes close to the township and enters the estuary to the east. Foreshore areas of Sydenham Inlet are a prominent feature of the town of Bemm River, and the access and use of these areas are an integral part of this coastal township. The majority of activity in and around Bemm River, both during peak visitor periods and other times of the year, is centred on the estuary, the Bemm River, and the foreshore areas associated with them.

The foreshore is adjacent to the township and provides the location for many of the towns public facilities. Through boat access to Sydenham Inlet and the Bemm River, the foreshore is a crucial asset to the town, particularly during peak visitor periods. The foreshore also provides a location to enjoy recreational pursuits, including land based fishing, and to appreciate the scenic natural landscape. Picnic areas and barbecues, boat ramps and parking areas, jetties, parkland and play equipment, public amenities, and important locations for recreational fishers are all located within the foreshore area.

There is a very strong relationship between the success of commercial businesses in Bemm River and the use of the foreshore and the facilities it provides. Many businesses benefit from their exposure to tourist traffic, both vehicular and pedestrian, along the foreshore.

The study area for the Bemm River Foreshore Management Plan encompasses the public shoreline and adjoining coastal Crown land bordering Sydenham Inlet and the Bemm River. The study area extends along the north eastern shore of the inlet, with two smaller sections adjoining the southern bank of the Bemm River. The study area includes:

- Luderick Point, including all boat ramp, jetty, and parking facilities;
- Fingerling Jetty, boat ramp and car park;
- Sydenham Inlet foreshore surrounding the boat ramp sites, extending from the northern extent of houses along Sydenham Parade, south to the start of the unsealed section of Pearl Point Track;
- Bemm River access walkway site, including parking areas along Sydenham Parade; and
- Dolly's Garden, including access roads, car park and picnic areas, fishing platforms and surrounding land.

4.1 Values

The foreshore areas of Bemm River and surrounding areas contain a number of important ecological, recreational, cultural, and economic values. Extensive areas of largely unmodified estuarine and river habitats, including extensive areas of remnant vegetation provide refuge for important terrestrial and aquatic species. These same areas also represent key points of access to the Bemm River and Sydenham Inlet for residents and visitors, as well as spaces for passive and active recreation, particularly during peak visitor periods. **Section 5** of this Foreshore Management Plan provides a more detailed description of the features and values within the study area.

4.2 Issues

Through investigations within the study area and consultation with the community a number of important issues requiring management have been identified throughout the foreshore areas. The need to address the functionality, form, and maintenance of boating facilities, foreshore access points and pathways for residents and visitors, the level of general recreational facilities, parking and traffic flow, and the level of land based recreational fishing facilities, have all been identified as important issues to be addressed. **Section 6** of this Foreshore Management Plan provides a description of the detail and context of these issues within the foreshore.



5 FORESHORE FEATURES AND VALUES

Foreshore areas around Bemm River are diverse in the values and opportunities they provide. There are areas offering open space for passive recreation, which also provide the location for important community and public facilities. The foreshore provides the only access points to Sydenham Inlet and the Bemm River for water based activities (primarily recreational fishing). Extensive sections of the study area are relatively undeveloped and contain significant natural and ecological values.

The town of Bemm River has a relatively small population, however it supports a significant number of visitors to the area, particularly during peak times. A challenge for ongoing management of the foreshore areas surrounding Bemm River will be attempting to balance maintaining the character of the town, whilst providing facilities to meet the growing demands of visitors. This Foreshore Management Plan seeks to resolve competing demands by ensuring important natural values are maintained, whilst facilitating appropriate use of the foreshore.

5.1 Natural Values

The Bemm River township is located on the shores of Sydenham Inlet, listed on the Directory of Important Wetlands in Australia. Sydenham Inlet is fed by the Bemm River, which is listed as a Victorian Heritage River for its entire length, with the inlet itself also contained within the Heritage River corridor.

Both the Bemm River and Sydenham Inlet provide important, riparian, freshwater aquatic, and estuarine habitat for a broad range of flora and fauna species including State and Nationally significant birds like the Little Tern (*Sterna albibrons*), White-bellied Sea Eagle (*Haliaeetus leucogaster*), and the Hooded Plover (*Thinornis rubricollis*). Important fish species like Australian Grayling (*Prototroctes maraena*), listed under the *Environment Protection and Biodiversity Conservation (EPBC) Act (1999)*, also utilise the Bemm River and Sydenham Inlet as part of their migration and breeding cycles.

Seagrass beds are important nursery habitat for estuarine fish species, serving to support a popular recreational fishery within the estuary and lower Bemm River.

Large areas of intact vegetation communities and fringing wetlands provide a diverse range of aquatic and terrestrial habitats, providing refuge for a diversity of species and sustaining natural ecological processes around the inlet, including limiting shoreline erosion and helping to maintain water quality.

5.2 Recreation Values

Foreshore areas surrounding Bemm River, including the Bemm River itself, are vitally important in offering a range of recreational opportunities that are popular with local residents and tourists.

Recreational fishing from powered and non-powered vessels, and access to a wide range of recreational fishing opportunities, are other important recreational values supported by the foreshore area. A range of estuarine species are targeted within the estuary and river environments (particularly Black Bream and Estuary Perch) and the area is renowned as a popular high quality fishing destination both for locals and visitors to the region.

Other water based activities including boating, and land based recreational fishing are also popular pastimes within the area. More sheltered and confined areas of the estuary and river system are often utilised by kayakers and canoeists, bird watchers or those seeking to simply enjoy spending time on the water. Other recreational activities including walking and cycling are also undertaken within the study area.

The boat ramp, jetty and parking facilities along the foreshore provide an invaluable asset for the community and visitors alike. Access to Sydenham Inlet is an important driver of tourism in the area, and the facilities associated with the launching and retrieval of boats are some of the most important within the town.

5.3 Cultural / Historical Values

Bemm River has a long history as a remote fishing destination, attracting many visitors seeking a unique fishing experience. Increasingly the area has become known for the undisturbed natural environment that surrounds it and the opportunities to explore these areas by different means. The maintenance of the character of the town is an important objective for the Foreshore Management Plan.

Shorelines of Sydenham Inlet and the Bemm River, including the entire extent of the study area, are listed as areas of Aboriginal Cultural Heritage Sensitivity. Sydenham Inlet is an important cultural and historic site used traditionally for collection of food and as a gathering place by local Aboriginal people. Crown land parcels within the study area are also subject to Native Title claim by Gunai/Kurnai People and Kurnai Peoples.

6 CURRENT MANAGEMENT ISSUES

A brief summary of the broad range of management issues identified for the Bemm River foreshore, including Luderick Point, Fingerling Jetty, Dolly's Garden and the Bemm River access walkway, are provided below.

6.1 Boating Facilities and Access

Management issues relating to boating facilities and access to Sydenham Inlet include:

- Deficiencies in boat launching facilities to address both regular and peak demand and to enable practical access to Sydenham Inlet.
- Functionality of jetty facilities at both Luderick Point and Fingerling Jetty, with a need to improve the efficiency and safety of launching boats for a broad range of community members.
- Opportunities to improve car and trailer parking arrangements ensuring they are able to meet peak demand whilst not impacting on other social or environmental values.
- The need to ensure facilities associated with the two boat ramps are appropriate for the levels and types of use occurring at the sites.
- Consideration of the use of informal water access points to the west of Fingerling Jetty.
- Opportunity to provide a specific kayak launching and retrieval area separate from existing boat ramp facilities.

6.2 Recreation and Tourism Management

Management issues relating to the use of the foreshore for recreational activities, and the management of tourism related to the foreshore include:

- The need to upgrade recreational fishing and multi-use facilities to cater for demand both along the foreshore at Fingerling Jetty and at designated points on the Bemm River.
- Lack of pathway linkages at all sites for pedestrians and cyclists; with a need to consider pathway types, surface, connections between key areas, safety, and signage.
- Deficiencies in parking and access at important recreational sites along the foreshore (other than boat ramps).
- Opportunities to improve public facilities, including toilets, particularly at Luderick Point and Dolly's Garden.
- Lack of directional, location, and interpretive signage to increase awareness of foreshore values, recreational opportunities, and facilities, particularly for visitors.

6.3 Natural Resource and Cultural Heritage Management

Management issues relating to the protection, maintenance and enhancement of environmental and ecological values related to the foreshore include:

- Occurrences of poor local water quality, including impacts of storm water management.
- Lack of environmental and cultural interpretation in the area, particularly if networks of pathways and tracks are to be developed.
- Management and protection of Cultural Heritage values that may be identified within the study area.
- Impacts on environmental values, including significant estuarine and rainforest vegetation communities.
- Foreshore erosion, including monitoring and the development of strategies to respond to this process.



7 PROPOSED MANAGEMENT STRATEGIES

A range of proposed management objectives and strategies have been developed for the study area based on an assessment of the issues and opportunities identified through public consultation. These proposed objectives and strategies are illustrated on the following maps and photographs.

7.1 Management Objectives

Foreshore areas covered by this Foreshore Management Plan have been divided into different zones to assist development of **Management Objectives**. Maps in Section 7.3, 7.4, and 7.5 illustrate the extent of each zone and its proposed Management Objective. These zones are:

Bemm River Foreshore

- Western foreshore;
- Northern foreshore;
- Luderick Point Memorial Park; and
- Luderick Point and Fingerling Jetty.

Other Sites

- Bemm River access walkway; and
- Dolly's Garden.

7.2 Management Strategies

Specific **Management Strategies** have been proposed to address the management objective for each zone, as illustrated in Section 7.6 -7.15. The management strategies are colour coded to represent the type of activity proposed, and the indicative area for implementation is shaded with the corresponding colour.

The proposed management strategies cover the following general themes:

- erosion management;
- maintenance, upgrade or provision of recreational facilities;
- car and trailer parking, and roads;
- improving or providing linkages for pedestrian access;
- improvement of boating facilities, including the required technical investigations to inform the planning, design, installation, and maintenance of these facilities;
- management of native vegetation;
- management of natural values; and
- rationalisation of Crown land boundaries.

The responsibility for all proposed management strategies outlined within this Foreshore Management Plan lies with the East Gippsland Shire Council.



7.3 Detailed Zones and Management Objectives – Northern and Western Foreshores



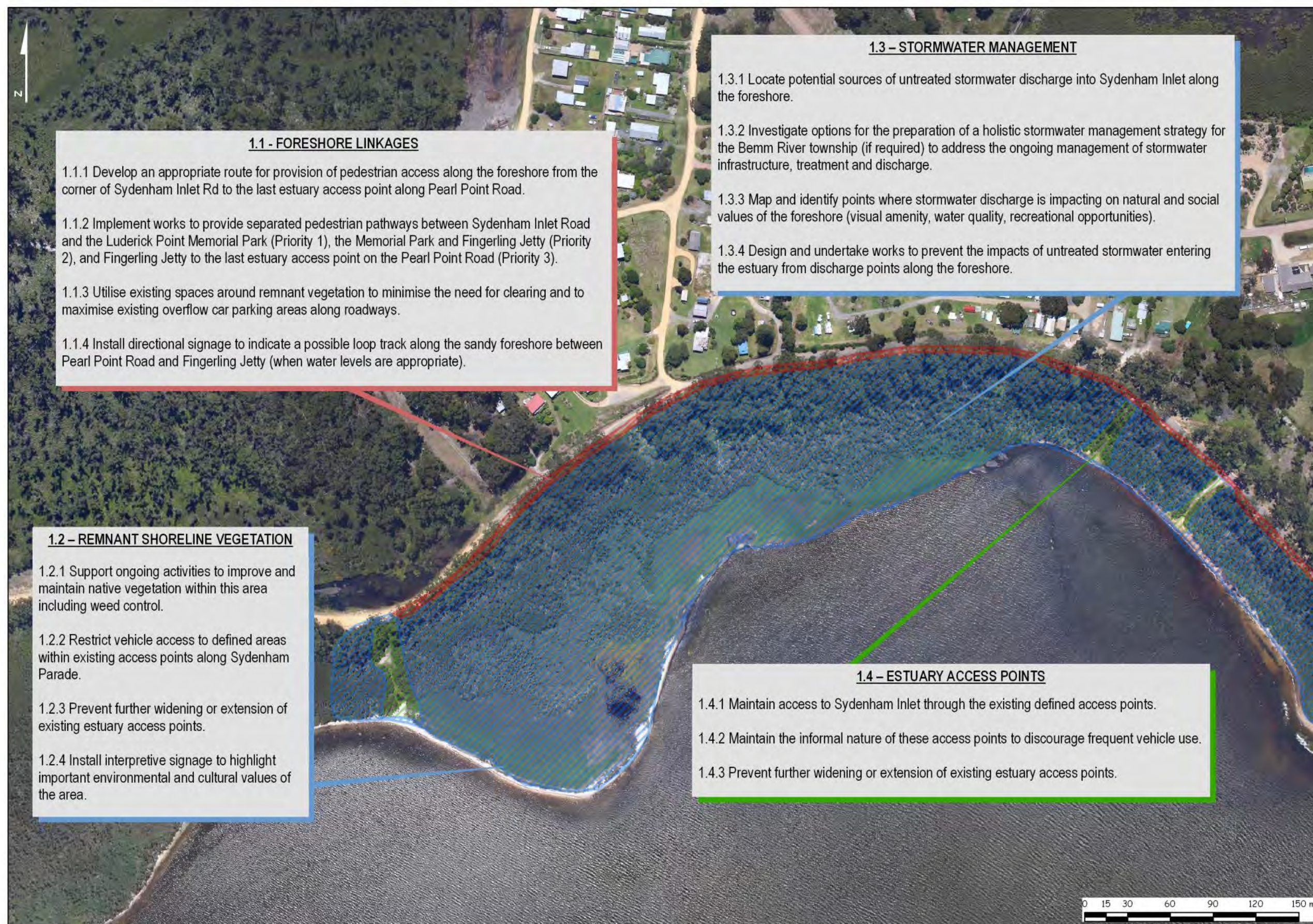
7.4 Detailed Zones and Management Objectives – Fingerling Jetty, Luderick Point and Memorial Park



7.5 Detailed Zones and Management Objectives– Dolly's Garden and Bemm River Access Point



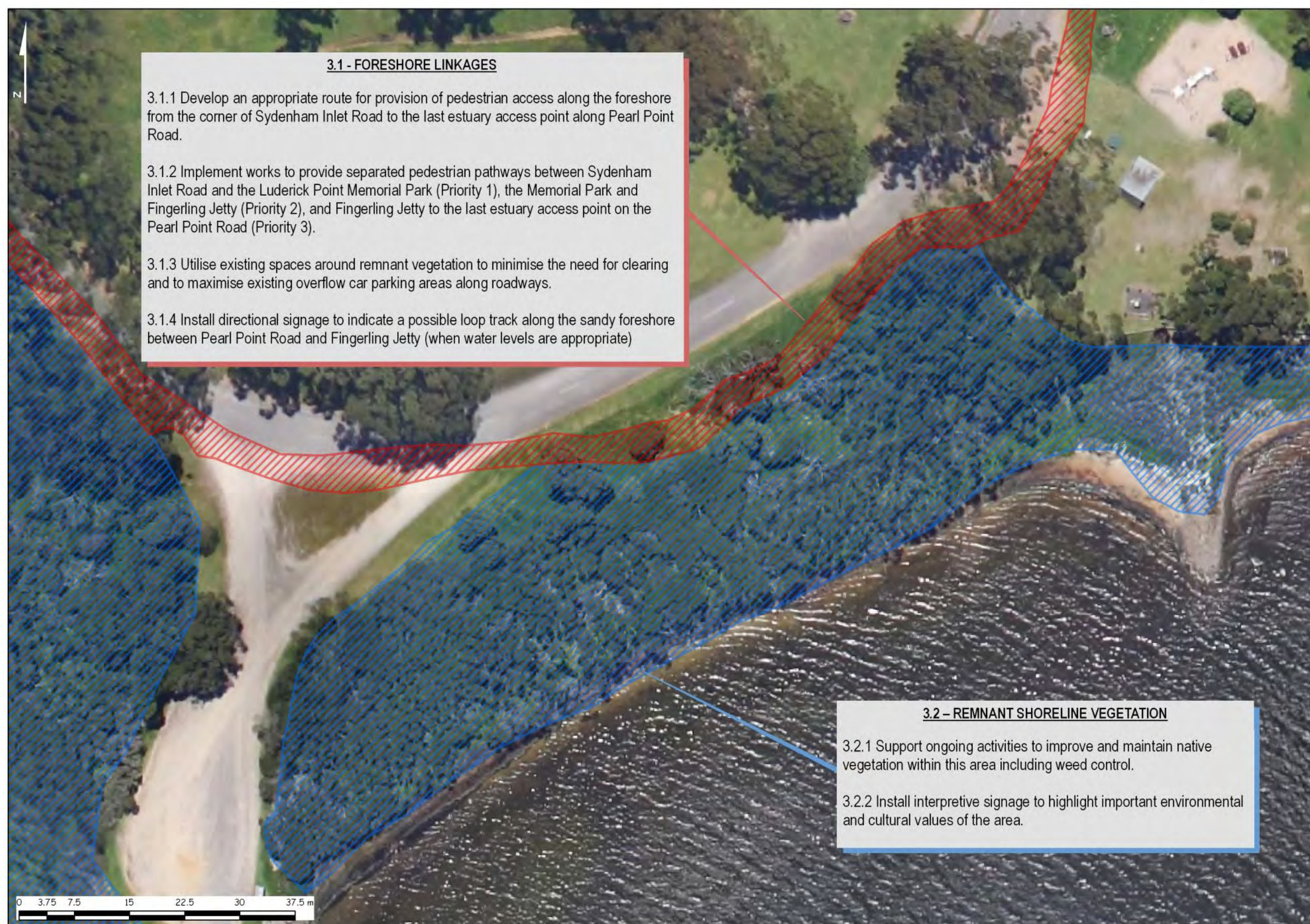
7.6 Detailed Proposed Management Strategies – Western Foreshore



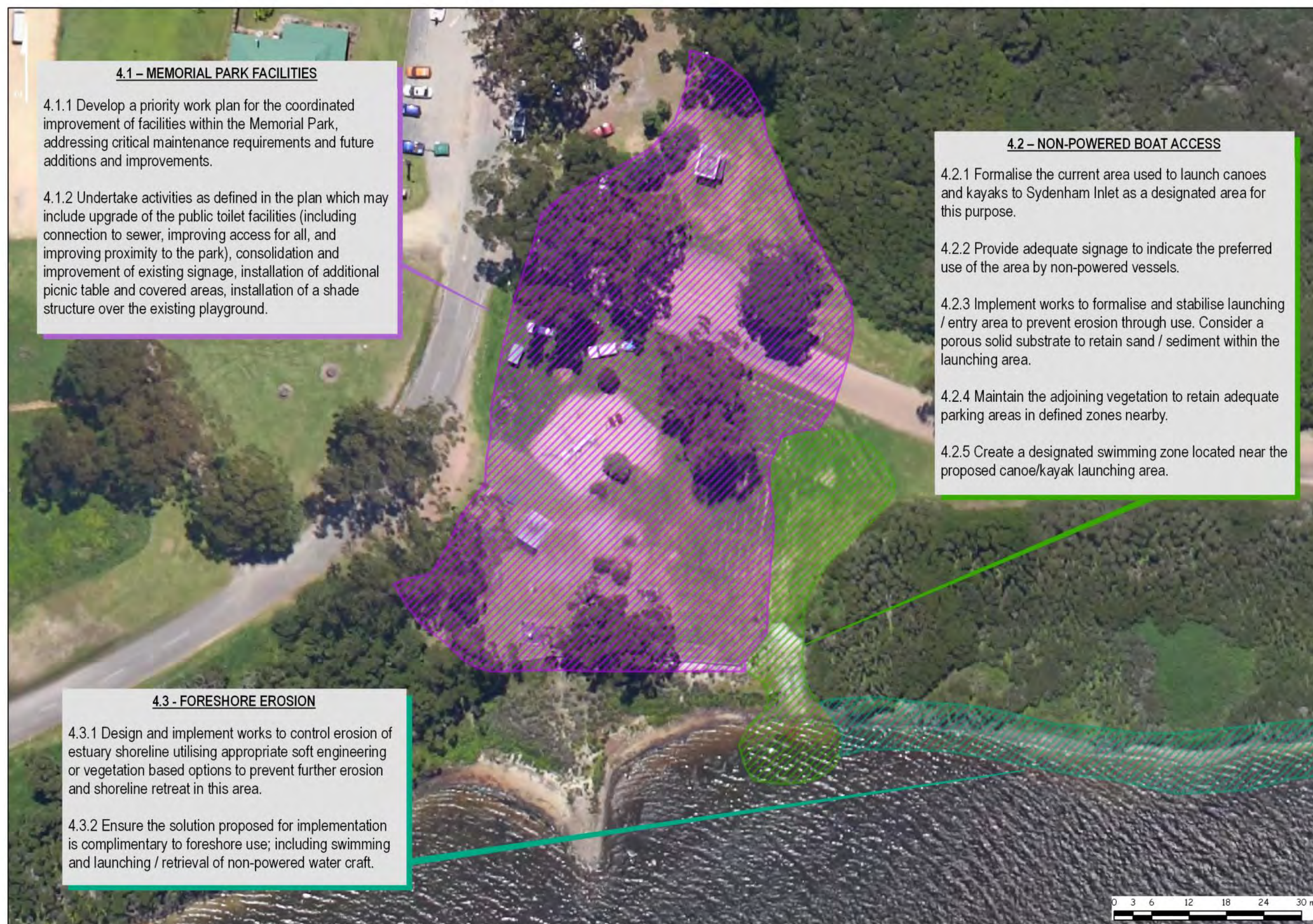
7.7 Detailed Proposed Management Strategies – Fingerling Jetty



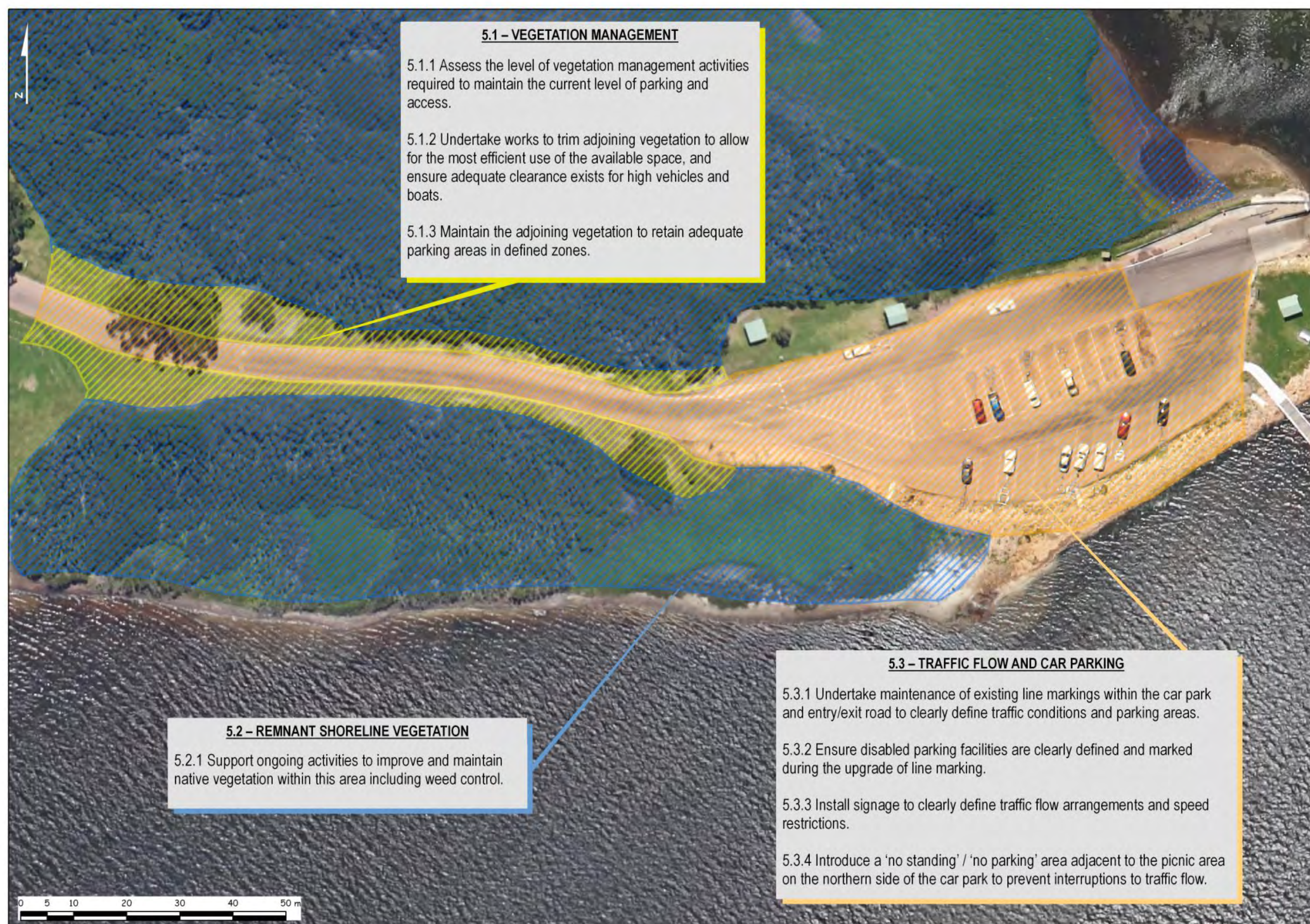
7.8 Detailed Proposed Management Strategies – Between Fingerling Jetty and Memorial Park



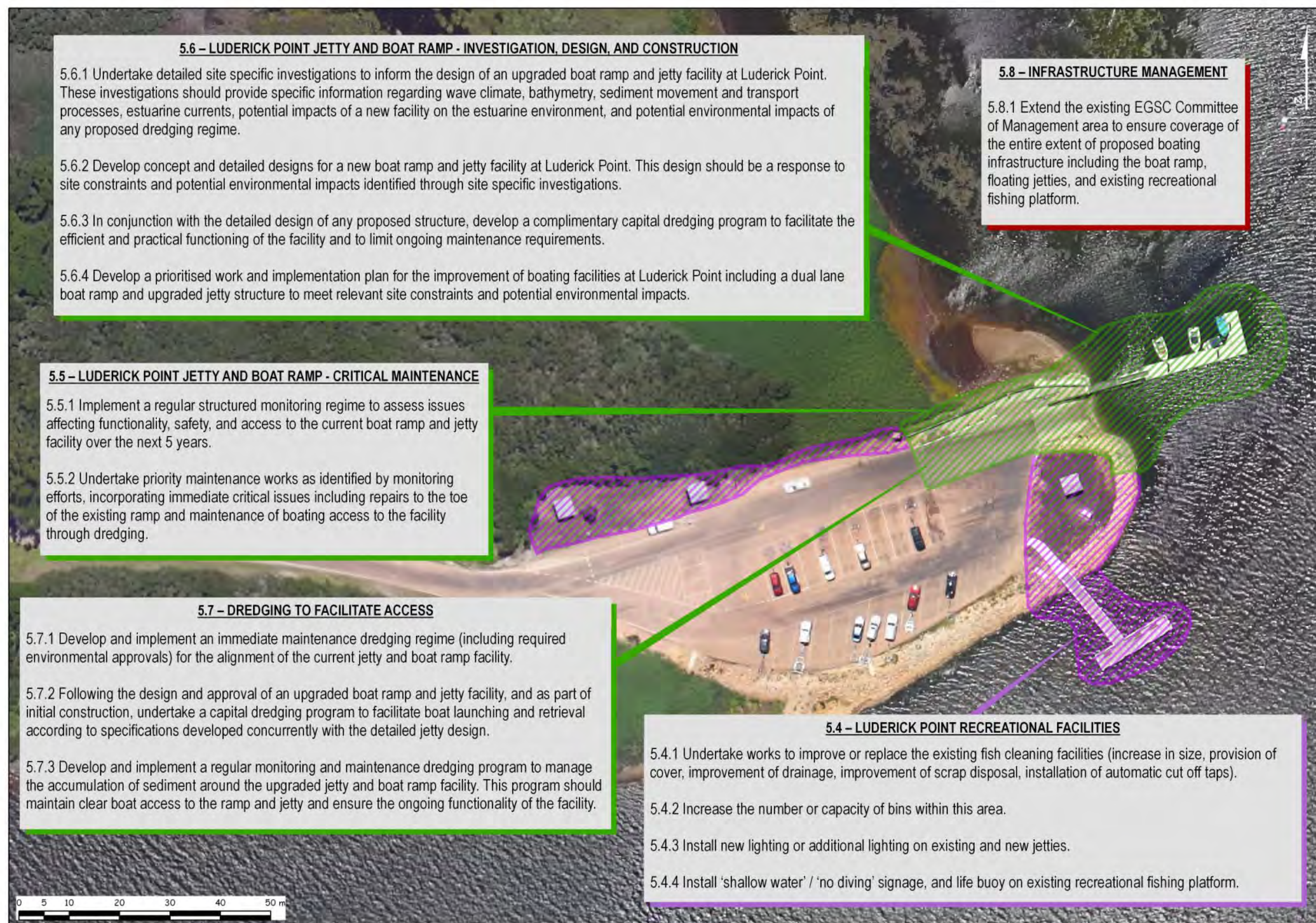
7.9 Detailed Proposed Management Strategies – Luderick Point Memorial Park



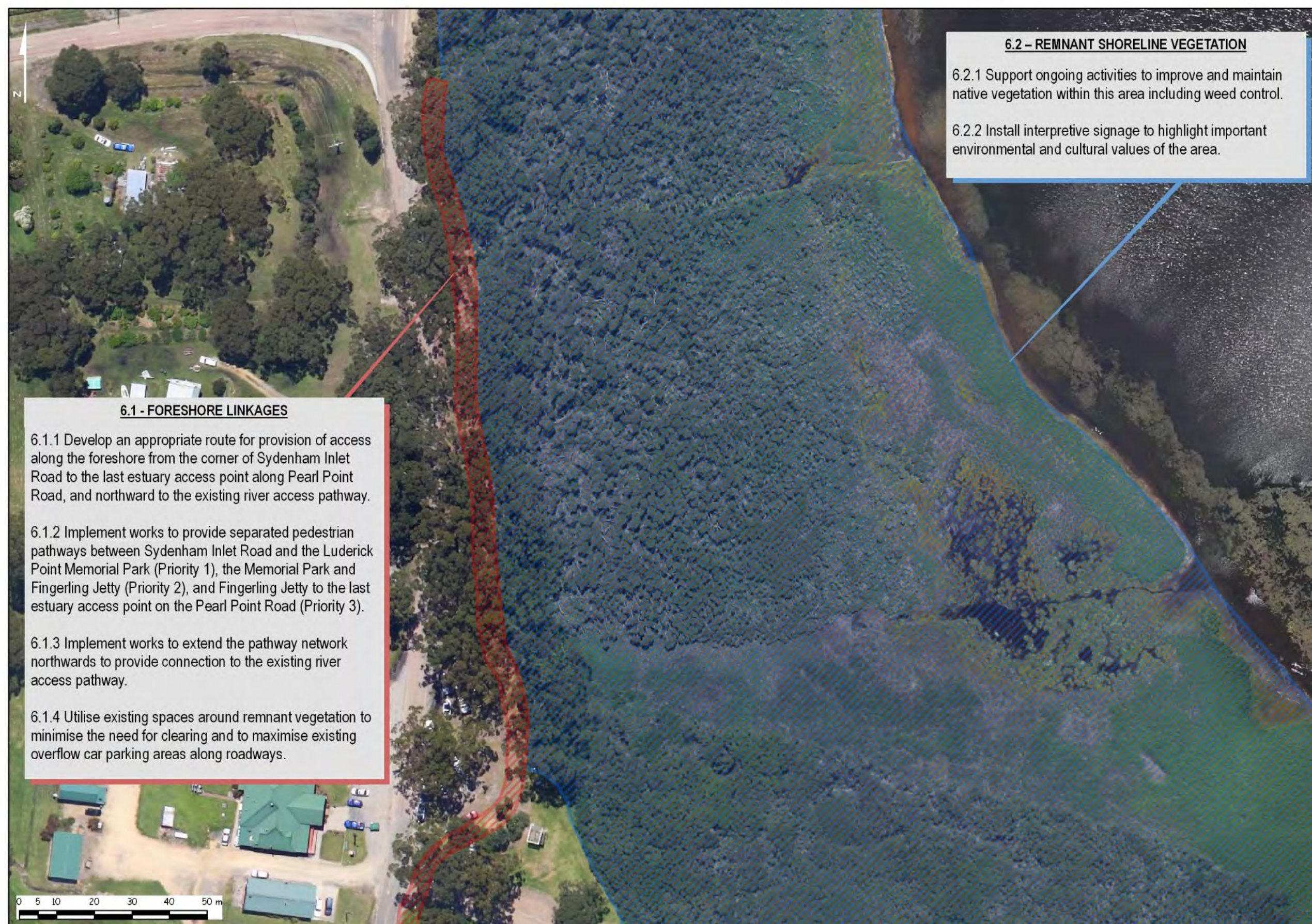
7.10 Detailed Proposed Management Strategies – Luderick Point Entrance Road



7.11 Detailed Proposed Management Strategies – Luderick Point



7.12 Detailed Proposed Management Strategies – Northern Foreshore



7.13 Detailed Proposed Management Strategies – River Access Point



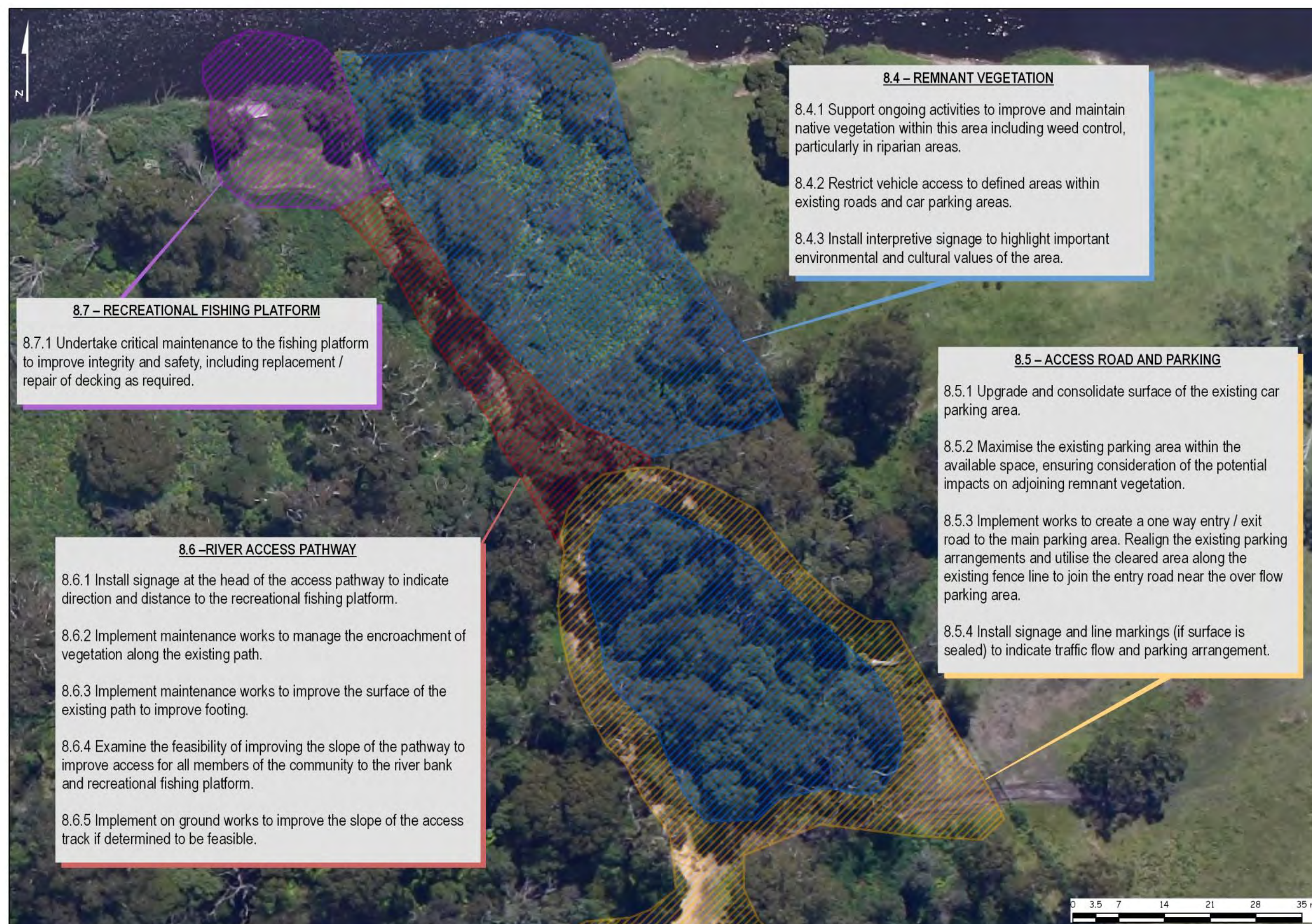
7.13 Detailed Proposed Management Strategies – River Access Point continued



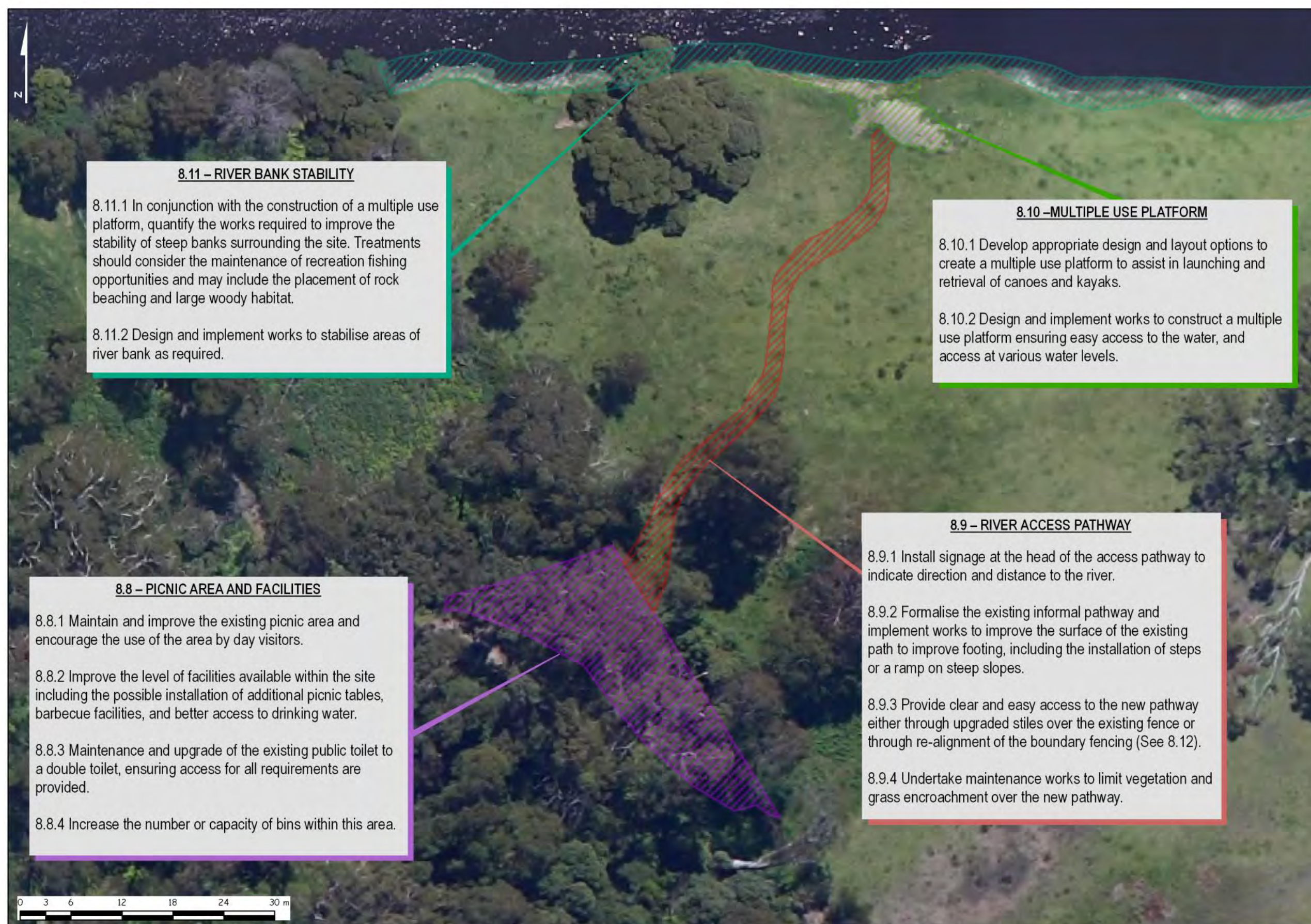
7.14 Detailed Proposed Management Strategies – Dolly's Garden Entrance



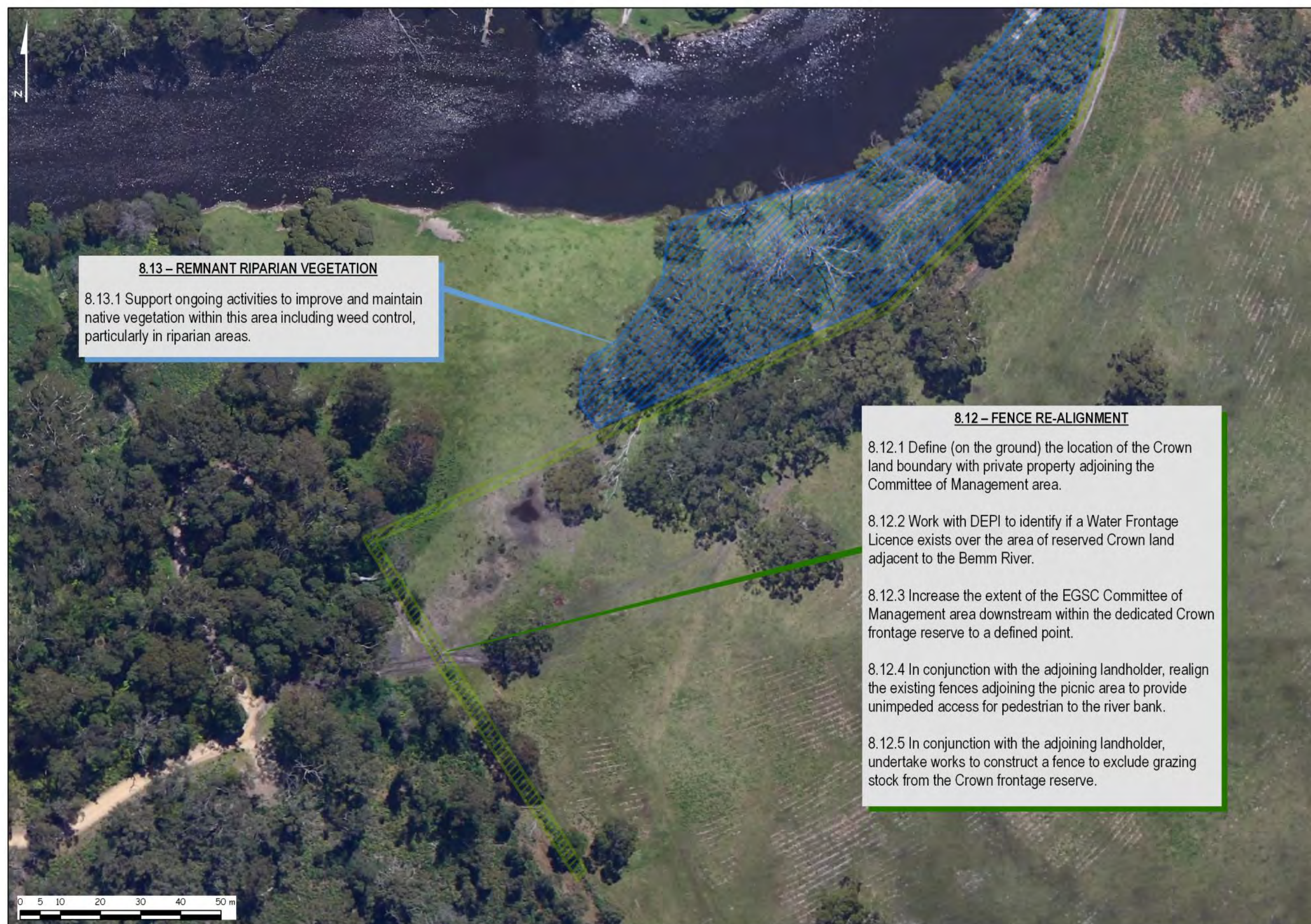
7.15 Detailed Proposed Management Strategies – Dolly’s Garden



7.15 Detailed Proposed Management Strategies – Dolly's Garden continued



7.15 Detailed Proposed Management Strategies – Dolly's Garden continued



8 LUDERICK POINT BOAT RAMP AND JETTY

Through discussions with the community and the public consultation process associated with the Draft Foreshore Management Plan, an opportunity to prepare a more detailed concept plan for the Luderick Point boat ramp and jetty was identified. An initial concept plan, supported by detailed construction drawings, for upgrade of the Luderick Point boat ramp and jetty were developed.

Following feedback from stakeholders, an external review was commissioned by East Gippsland Shire Council to assess the proposed concept and detail designs. Following this review, the initial concept design has been revised, and the need to gather further detailed site specific information to assist in the final design of a boat ramp and jetty facility for Luderick Point has been acknowledged.

8.1 Next Steps

A number of key steps have been identified to assist in achieving the objectives for Luderick Point, these include:

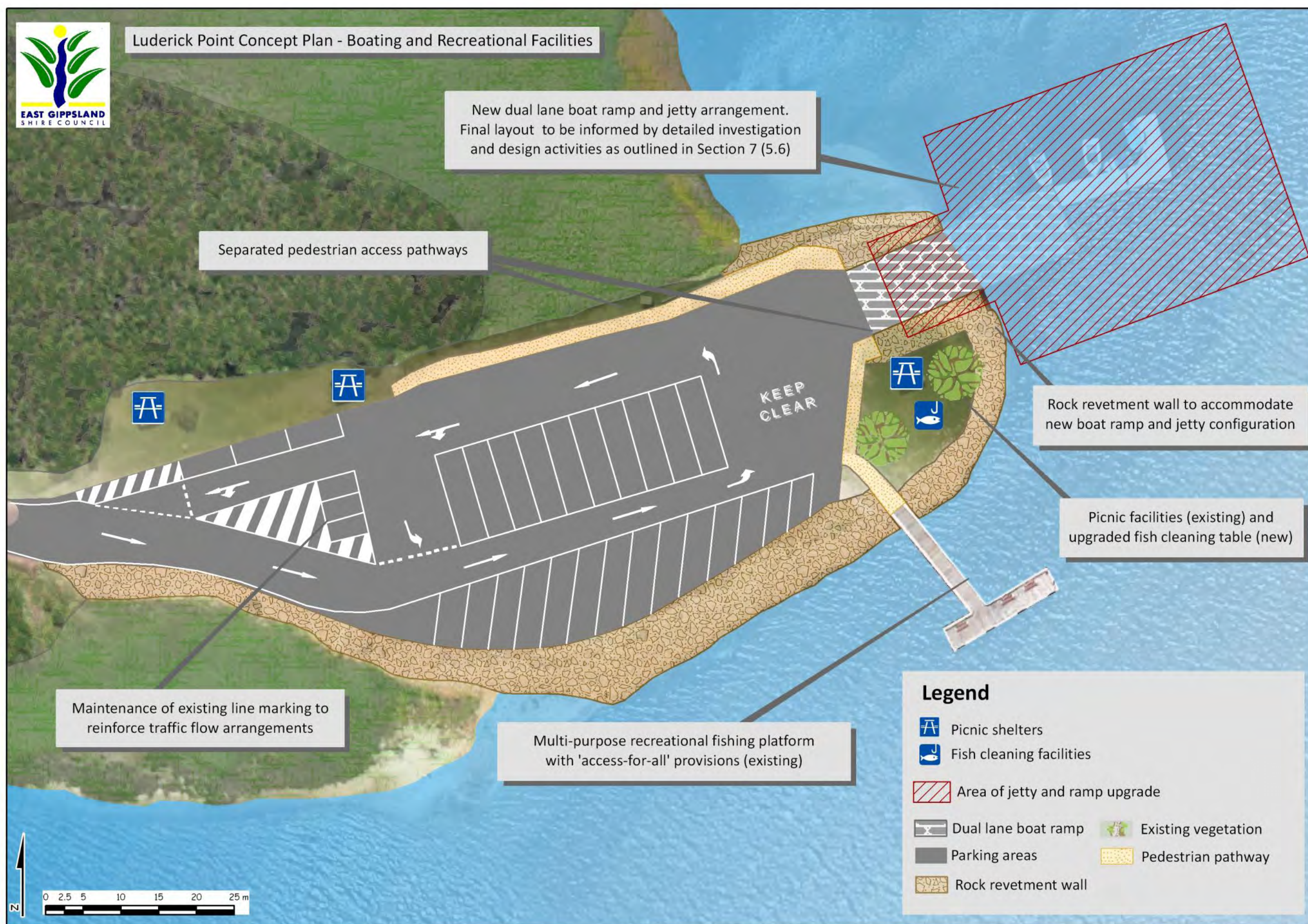
- The need to implement a regular monitoring regime to assess issues affecting functionality, safety, and access to the current boat ramp and jetty facility over the next 5 years;
- Addressing immediate critical issues including repairs to the toe of the existing ramp and maintenance of boating access to the facility through dredging;
- Completion of detailed site specific investigations to provide specific information regarding wave climate, bathymetry, sediment movement and transport processes, estuarine currents, potential impacts of a new facility on the estuarine environment, and potential environmental impacts of the proposed dredging regime at the site;
- Development of revised concept and detailed designs for boat ramp and jetty facilities at Luderick Point in response to site constraints and any environmental impacts identified through site specific investigations; and
- Develop a prioritised work and implementation plan for the improvement of boating facilities at Luderick point including a dual lane boat ramp and upgraded jetty structure to meet the objectives for the site.

8.2 Interim Concept Plan

An interim concept plan has been developed to support specific actions within the Bemm River Foreshore Management Plan. Sydenham Inlet and Luderick Point often experience conditions that are not readily overcome, including: variable water levels, high onshore winds, significant wave chop, silty bottom conditions and prevalence of seagrass. Options for upgrade of the ramp and jetty were discussed at a public meeting in July 2013, with further correspondence received over the following months. Key features of the Luderick Point boat ramp and jetty upgrade include:

- A revised jetty and boat ramp configuration informed by further site specific investigations;
- Compliant with 'access-for-all' requirements;
- Retention of existing fishing jetty;
- Improved picnic and fish cleaning facilities;
- Separated pedestrian access to all jetties and improved signage throughout;
- Improved line marking for traffic flow & parking, including the provision of disabled parking;





9 LAND STATUS AND MANAGEMENT RESPONSIBILITY

The majority of foreshore areas within the study area are public Crown land reserved under the *Crown Land (Reserves) Act 1978* for which the Department of Environment and Primary Industries is the 'underlying Crown land manager'. Day to day management of the majority of the foreshore areas is delegated to Committees of Management.

Other areas adjoining and influencing the foreshore, including waterways, National Parks and Reserves, and roads, are also relevant to the preparation of this Foreshore Management Plan and the ongoing management of the foreshore zone. Various land managers and management authorities are responsible for different areas of the foreshore adjoining the study area.

The table below outlines the relevant management agencies and a brief description of the areas within or adjoining the foreshore that they are responsible for.

AGENCY	MANAGEMENT AREA
East Gippsland Shire Council (Committee of Management)	Majority of the foreshore including a 20m strip of Sydenham Inlet adjoining the foreshore and including boating infrastructure.
Department of Environment and Primary Industries	Areas of river frontage adjoining the Bemm River as permanently reserved areas of Crown land, and a small area of foreshore adjoining Sydenham Inlet.
Parks Victoria	The water body of Sydenham Inlet as part of the Cape Conran Coastal Park. Also the area of foreshore to the north of the study area adjoining Sydenham Inlet and covering the entire northern shore of the estuary. Parks Victoria actively manages the Sydenham Inlet estuary entrance and is responsible for the works undertaken to physically open the estuary.
East Gippsland Catchment Management Authority	'Caretaker of River Health' involved in active management of the Bemm River and Sydenham Inlet, and is the coordinating authority for the artificial opening of the estuary entrance.
Private Landholder	Areas of land adjoining Dolly's Garden and covering the footprint of the Bemm River access walkway.

The following maps outline the spatial extent of each management authority's area of responsibility and provide a more detailed description of their roles and responsibilities.



9.1 Land Status and Management Responsibility - EGSC



9.2 Land Status and Management Responsibility - DEPI



9.3 Land Status and Management Responsibility – Parks Victoria



9.4 Land Status and Management Responsibility - EGCMA



10 LEGISLATION, POLICIES AND PLANS

Preparation of the Foreshore Management Plan for Bemm River has been accordance with the requirements of the *Coastal Management Act 1995* and guided by a number of central policy documents, including:

- Victorian Coastal Strategy (2008)
- Gippsland Boating Coastal Action Plan (2013)
- Integrated Coastal Planning for Gippsland Coastal Action Plan (2002)

Secondary guiding documents include:

- Bemm River Urban Design Framework (March 2007)
- East Gippsland Regional River Health Strategy (2005)

THIS PAGE HAS BEEN
LEFT INTENTIONALLY BLANK



EAST GIPPSLAND
SHIRE COUNCIL
www.eastgippsland.vic.gov.au