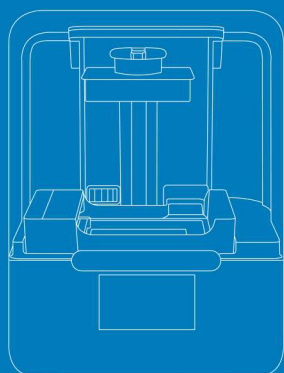


Form 3

High Detail Desktop 3D Printing for Jewelry Design and Manufacturing

Reliably reproduce crisp settings, sharp prongs, smooth shanks, and fine surface detail with advanced Low Force Stereolithography technology, the latest innovation from the leader in high resolution desktop 3D printing. The Form 3 supports jewelers from design to client try-on to casting, ideal for rapidly expanding custom services and production as your business grows.

Member of



Form 3 Tech Specs

The Next Generation of Industrial 3D Printing

Technology

LFS™ Low Force Stereolithography

Layer Thickness

25 - 300 microns
0.001 - 0.012 in

Dimensions

40.5 × 37.5 × 53 cm
15.9 × 14.8 × 20.9 in

Optics Engine

1 Light Processing Unit
250 mW laser power
25 micron (0.001 in) XY resolution

Build Volume

14.5 × 14.5 × 18.5 cm
5.7 × 5.7 × 7.3 in

Warranty

One Year Warranty included.
Extended Warranty, Pro Service, and Enterprise Plan available.



www.maptec.ae/jewellery



Castable Wax Resin: Setting the Standard for Desktop Print Quality

Ornate Geometries, High Precision and Accuracy

Castable Wax Resin accurately captures fine features, like raised text, delicate filigree wires and meshes, and detailed pavé. By focusing on the most challenging geometries during product development, we were able to create a material capable of accurately printing designs of all kinds.

Supports print resolutions: 50 and 25 microns.

Same Day Castings: Fast Burnout, No Post-Cure

Castable Wax Resin is 20% wax-filled for clean, easy casting with fast, reliable burnout. This resin does not require post-curing, making part preparation fast and foolproof—no wondering if a part is fully cured and ready to cast.



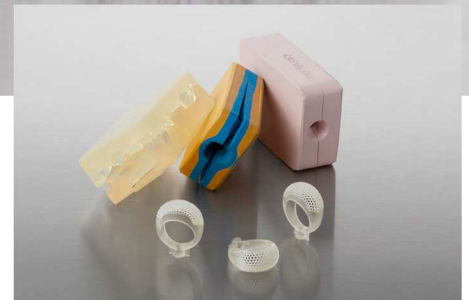
DIRECT INVESTMENT CASTING

Highly detailed and intricate jewelry is complicated to produce by hand, and in a world driven by high demand and fast fashion, it can be difficult for hand-crafted pieces to keep pace. Use Formlabs **Castable Wax Resin** to 3D print complex parts that are ready to cast.



PROTOTYPING AND FITTING

Work with one material throughout prototyping and production: **Castable Wax Resin** is suitable for both custom try-ons and final production. The matte finish of our library of **Standard Resins** shows detail exceptionally well, making these materials ideal for rapid and cost-effective prototyping.



PRINTED MOLD MASTERS

The Form 2 can be used to directly print masters that withstand the temperatures and pressures of vulcanized rubber molding. Use **Formlabs Standard Resin** for room temperature processes (RTV) and **High Temp Resin** for medium temperature processes.



Visit us

UAE Office:
701, Wasl Business Center, Port Saeed,
Deira, Dubai, United Arab Emirates
P.O. Box 98617

KSA Office:
A. Shifa Area, Al-Mussa Industrial Area,
Al-Nasser Street cross Hayel Road, Riyadh,
Kingdom of Saudi Arabia

Contact us

UAE Office:
+971 4 251 7734

KSA Office:
+966 545 823123

Email
info@maptec.ae

Website
www.maptec.ae