

IP ELEMENTS

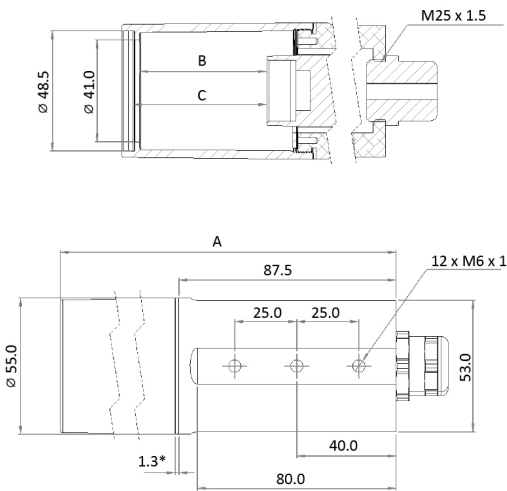
The IP ELEMENTS Compact camera housing system is the most easy to use, cost effective and flexible system on the market.

The IP67/IP68/IP69K rated enclosure range is ideal for demanding industrial applications, offered in full featured and cost saving versions. Complemented by a rich ecosystem of accessories to suit a wide variety of applications, it can also be fully customisable to specific requirements.



- Easy to use
- Time saving
- Cost effective
- Highly configurable
- Modular mounting
- Robust and durable

IPE COMPACT PA

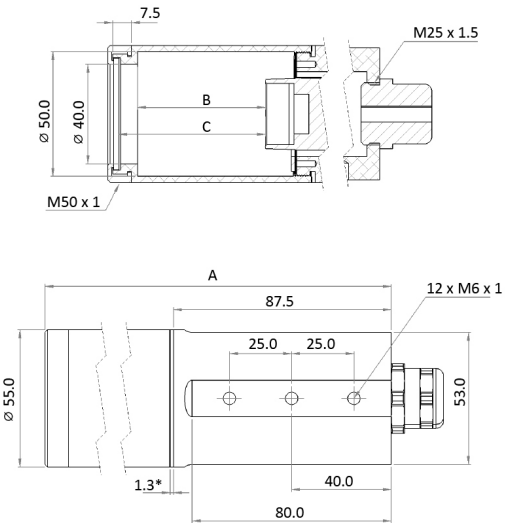


* 1.3 when tightened according to instructions. 1.5 non compressed

- A Overall length
- B Inner clearance
- C Clearance to the glass

Lens Tube Size	A	B		C	
		ACE	ACE2	ACE	ACE2
50 mm	145.9 mm	31.3 mm	36.7 mm	33.9 mm	39.3 mm
60 mm	155.9 mm	41.3 mm	46.7 mm	43.9 mm	49.3 mm
70 mm	165.9 mm	51.3 mm	56.7 mm	53.9 mm	59.3 mm
80 mm	175.9 mm	61.3 mm	66.7 mm	63.9 mm	69.3 mm

IPE COMPACT



* 1.3 when tightened according to instructions. 1.5 non compressed

- A Overall length
- B Inner clearance
- C Clearance to the glass

Lens Tube Size	A	B		C	
		ACE	ACE2	ACE	ACE2
50 mm	150.8 mm	31.3 mm	36.7 mm	38.8 mm	44.2 mm
60 mm	160.8 mm	41.3 mm	46.7 mm	48.8 mm	54.2 mm
70 mm	170.8 mm	51.3 mm	56.7 mm	58.8 mm	64.2 mm
80 mm	180.8 mm	61.3 mm	66.7 mm	68.8 mm	74.2 mm

Connectivity



M25 Metal
Cable Gland



M25 PC
Cable Gland



M25 PC Split
Cable Gland



Drillable, Single
and Double
Hole Inserts



Connector for
Corrugated
Conduit



Industry Standard
M12/M8 Connectors

Mounting

With the same hole pattern as the housing body, these mounting accessories can be used individually or combined for additional flexibility.



L Bracket



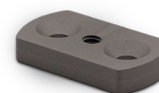
Case Clamp 55mm



30mm Clamp
& Tube Adaptor



Hinge



Tripod Adaptor Plate

Seal Material Options

Gasket Material	Advantages	Disadvantages
EPDM	Excellent weather resistance Good low temperature flexibility Excellent chemical resistance Good heat resistance	Poor petroleum oil and solvent resistance
NBR (Nitrile)	Excellent compression set Superior tear resistance Abrasion resistance	Poor weather resistance Moderate heat resistance
Silicone	Excellent extreme temperature properties Excellent compression set resistance Very clean, low odour and taste	Typically not good for dynamic seals due to friction properties and poor abrasion resistance
FKM (Viton)	Excellent chemical resistance Excellent heat resistance Good mechanical properties Good compression set resistance	Poor low temperature flexibility Poor resistance to hot water and steam
FVMQ (Fluorosilicone)	Excellent extreme temperature properties Excellent compression set resistance Very clean, low odour and taste	Typically not good for dynamic seals due to friction properties and poor abrasion resistance
Custom	-	-



Features (*default option)	IPE Compact PA	IPE Compact
Camera Compatibility	ACE GigE/USB ACE2 GigE/USB	ACE GigE/USB ACE2 GigE/USB
Lens Compatibility	Max. OD 47mm Max. Length 67mm	Max. OD 97mm, Max. Length 295mm Custom
Window Material	BK7 Glass	BK7 Glass* Sapphire Glass Germanium Glass Acrylic Custom
Window Coating	AR (Anti-Reflective)	AR (Anti-Reflective)* Uncoated AR Double sided AS (Anti-Scratch) IR Reflective
Body	Type 2 Anodised Aluminium	Type 2 Anodised Aluminium* 316L Stainless Steel
Lens Tube	Glass Filled Nylon, High Impact	Type 2 Anodised Aluminium* 316L Stainless Steel
Seal Material	EPDM* NBR Silicone FKM FVMQ	EPDM* NBR Silicone FKM FVMQ
IP Rating	IP67	IP67* IP68 IP69K
Connectivity	M25 Cable Gland, PC M25 Split Cable Gland, PC Connector for Corrugated Conduit, PA	M25 Cable Gland, Metal M25 Split Cable Gland Connector for Corrugated Conduit 2x M20 Cable Glands, Metal M12 Connectors M8 Connectors Custom Connectivity
Body Diameter	55mm	55mm
Lens Tube Diameter	55mm	55mm* 75mm 105mm Custom
Lens Tube Size (Internal Length)	50mm 60mm 70mm 80mm	50mm 60mm 70mm 80mm to 300 in 20mm Increments Custom Lengths
Compatible Accessories	Mounting Sun and Heat Shields	Mounting Sun and Heat Shields Light Encapsulation Air Curtain Shutters Cooling Extensions