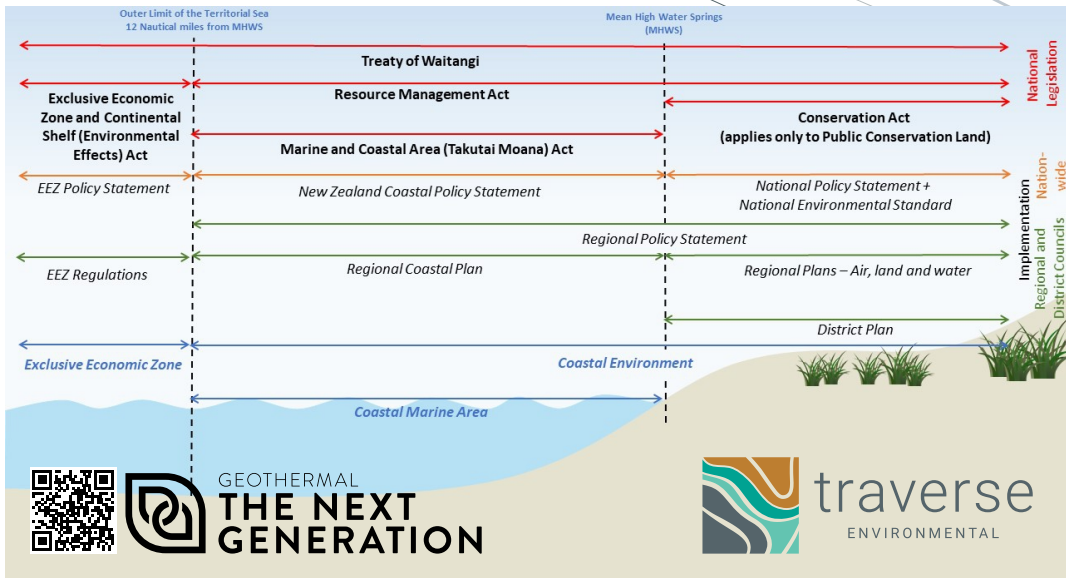


Quick Reference: New Zealand's Environmental Statutory Framework



Join us to realise New Zealand's supercritical geothermal energy future

The use of hotter, deeper supercritical geothermal resources in New Zealand needs an optimal planning framework to enable development, while achieving sustainable resource management.

As part of *Geothermal: The Next Generation* research programme, we are exploring the suitability of the existing planning framework for future supercritical geothermal energy development.

For more information on New Zealand's existing geothermal planning framework, use the QR code below.

To be involved in designing and developing a possible regulatory framework for New Zealand's supercritical energy future, contact us.



Contact : Deborah Kissick
M : 021 0265 1357
E: deborah@traverse.co.nz



**Access NZGW 2020
conference paper**