

WG520 Body Temperature Screening System

Product Code: 3520-05



WESTMINSTER
GROUP PLC

Key Features



Fever Detection



FDA Licensed and Registered



Moving Crowd Screening Capability



Field of View Accuracy 2m – 18m



Medical Grade Designed Camera



Ambient correction and averaging of individual temperatures



Overview

The WG520 Body Temperature Screening System is a medical grade rapidly deployable thermal imaging fever screening system for accurately identifying individuals that have an above normal body temperature.

The system was designed by medical professionals to be used as a first level mass screening test for identifying individuals that have an above normal body temperature.

The initial level primary screening provides little or no inconvenience or interruption of movement for the majority of people being screened. The WG 520 is FDA licensed and registered.

Specifications

Focal ability: 11 degree field of view with optimal focal screening length of 7.3m

Accurate measurement: accurate fever screening up to 21.3m

Data Capture: Instant recall and replay from hard drive

Standard System: Camera, laptop, software and stand

WG520

Body Temperature Screening System



WESTMINSTER
GROUP PLC

Accurate Detection

The focal ability of the WG 520 with an 11-degree FOV is 1 metre to infinity. The optimum focal length for fever screening is 7.3 metres. The focal length to stay within specification for fever screening is 1.82 metre to 10.66 metres, accurate measurements can still be made up to 21.3 metres.

Note: This system will only detect above normal body temperature that are typically associated with fevers, it will not detect early stages of infection.

Deployment

Fever screening stations are self-contained and portable, so they can be set-up in temporary locations very quickly.

Single units can operate as primary mass screening stations as well as secondary screening stations.

With multiple stations deployed, for high volume traffic, a single unit is normally designated as the secondary screening station.

Software Controls and Alarms

Stable calibration over ambient temperature changes ensures excellent measurement repeatability. Visible and audible alarms permit fast identification of alarm sources.

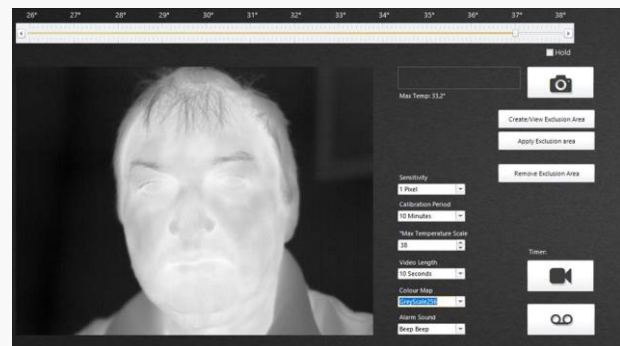
Compliance

The WG 520 is FDA licensed and registered.

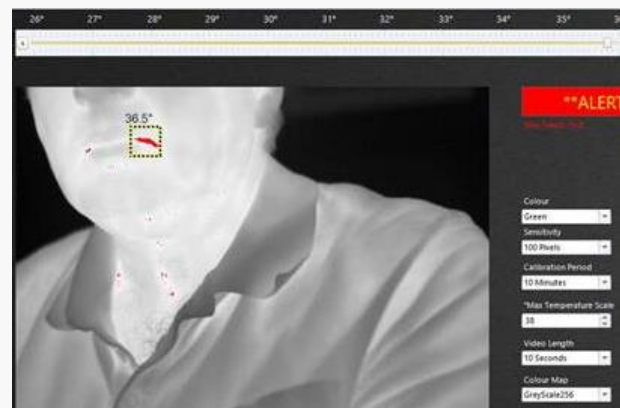
Certified for IEC 61000x standards regarding Electromagnetic Emissions and Electromagnetic Immunity.

Detection Imagery

Negative



Positive



Operation

Screening works by comparing people's skin temperatures against an average set temperature, that can be adjusted by the user. The average set temperature can be adjusted by sliding the adjuster on the temperature scale at the top of the screen.

Normal body temperature is dependent on age, recent activity, the individual and time of day. It is generally accepted that normal body temperature ranges between 36.1°C to 37.2°C (97°F to 99°F).

The WG 520 uses a thermal camera with a 11 degree field of view to as a screening system for accurately identifying individuals that have an above normal body temperature associated with fever symptoms.

The initial level primary screening provides little or no inconvenience or interruption of movement for the majority of people being screened.