



# WESTMINSTER INTERNATIONAL LTD

Telephone : +44 (0)1295 756300

Fax : +44 (0)1295 756302

E-Mail : info@wi-ltd.com

Website : www.wi-ltd.com

## WG Submersible Linear Marking System



The WG Submersible Linear Marking Systems uses electric energy to produce autonomous, intensely bright linear markings covering long distances, for marking out, guiding and identifying over long periods when visibility is low or zero. It offers valuable aid to operators who require guide and visual markers, enabling them to carry out successive operations on the same site without losing time.

### DESCRIPTION

Comprises 2 connected sub-units:

- A luminescent cable of variable length connectable to the pack
- A 200m leak tight, rechargeable battery pack
- The battery pack is a cylindrical unit fitted with a handle and including electric module and electronics. Equipped with a rotating contractor, a low-battery indicator, a pin for external charging, a pressure safety valve and a leak tight connector for the cable
- The luminescent line emits continuous cold LED that is very bright and intense along its entire length. One end of the 5mm line is fitted with a reinforced, watertight male connector and a wrist strap socket, and the other end is doubled with a 50cm stainless steel cable ending with a buckle and snap hook. The line is available in 20m lengths up to 140m. all lines are interchangeable, whatever the length. Standard colour / slime (green yellow).
- Autonomy – autonomy between charging depends on the length of the line connected and ranges from 4 to 7 hours.

### OPTIONAL FEATURES

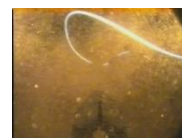
- Long length model devised for operating lines over 140m up to 300m
- For significant tractive >100kg, a reinforced aramid line is available for traction up to 1500N (150kg)
- Quick draws
- Other colours: blue, white, pink
- 12v battery using cigar lighter

### USE

- The kit can be used under water in depths of up to 200m, and any other environment outside the water. It is not appropriate for direct exposure in the fire and high temperature environment. This equipment is designed as security and visual marking and has to be used for this purpose only.

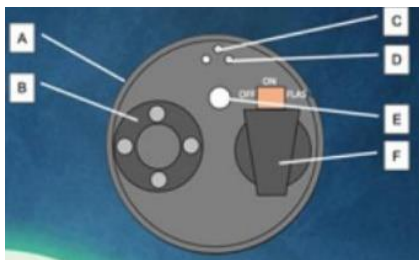
### MAINTENANCE

- The material is designed for intensive use. It requires no particular care except for rinsing with clear water after use, especially in seawater.



## PACK

- A - anodized aluminium body with 2 leak tight screw ends
- B - connector with a stopper cap to be removed before connecting the line
- C - white point: locating key for charging connector
- D - external charging pins
- E - charge indicator using diode + pressure valve
- F - rotating contactor with 3 positions: (clockwise) ON - OFF - Flash



## MAIN FEATURES

### Luminescent line:

- Standard temperature for use:  $-20^{\circ}\text{C}$  /  $=70^{\circ}\text{C}$
- Maximum temperature for use:  $=20^{\circ}\text{C}$  (in which case, return to factory for checking)
- Recommended tractive force: 100N (10kg)/ maximum 200N (20kg)
- Nominal radius elbow: 60mm / minimum: 35mm (risk of deterioration)
- Usage pressure: up to 20 bars (200m depth)
- Lifespan: 1,000 hours or 3 years (under normal conditions)
- Line weight:  $\pm 0.035\text{kg/m}$
- Colour: lime (green yellow)

### Battery pack: LSP

- Battery NiMH - 13.2V/4.5A
- Maximum battery autonomy: 4 to 7 hours depending on line length
- Number of cycles: < 500 charges
- Charge: mains supply 110-220VAC
- Minimum charge duration 4 hours (full charge using rapid charger)
- Factory return for checking after using 500 times or for 3 years
- Weight: air 1,500g / Water 750g
- Electric discharge control

