



WESTMINSTER

INTERNATIONAL LTD

Telephone : +44 (0)1295 756300

Fax : +44 (0)1295 756302

E-Mail : info@wi-ltd.com

Website : www.wi-ltd.com

WG Vehicle Security Fence Barrier



The WG Vehicle Security Fence Barrier is a hostile vehicle mitigation fence solution specifically designed to prevent unauthorised entry and protect people, buildings and infrastructure from hostile vehicle attacks.

The surface mounted system can be rapidly deployed on soft and hard standing as a temporary or permanent security system, as part of an overall strategy.

It is HWA 14 rated vehicle security barrier and can be integrated within high security perimeter fencing.

Each 430kg, 1m x 1m x 1m solid rubber unit is connected by steel cables or rods, providing the flexibility to protect both entrance areas and site perimeters against hostile vehicle attack.

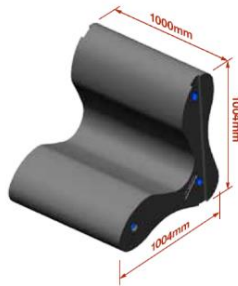
The integrated welded mesh fence panels provide a secure perimeter to a site.

The tight mesh makes it almost impossible to climb and is difficult to cut with anything other than power tools.

Fence toppings, CCTV and anti-intrusion detection systems can be added to further enhance site security.

PRODUCT BENEFITS

- A physical & visual security deterrent
- Excellent protection from vehicle borne attacks
- Unique design deforms to increase stopping performance
- Over 65% lighter than concrete solutions
- Modular design allows protection of entrances & perimeters
- Quick & easy to install, remove & relocate
- Integrated fence panels deliver high security
- Welded, tight mesh provides no climbing aids & mitigates attack by tools
- High visibility, ideal for use with CCTV



PERFORMANCE RATING

The WG Defender has been successfully impact tested to IWA 14-1 specification, stopping a 7.2 tonne N2A lorry travelling at 48kph (30mph).

TECHINCAL INFORMATION

Defender

- Height - 1004mm
- Width - 1000mm
- Depth - 1004mm
- Weight - 430kg
- Connectivity - 20mm steel cables or rods

Fence

- Height - Up to 2.4m
- Mesh Pattern - Various
- Vertical Wires - 4mm
- Horizontal Wires - 4mm
- Posts - 80mm x 40mm
- Post Centres - 2060mm