



# WESTMINSTER

## INTERNATIONAL LTD

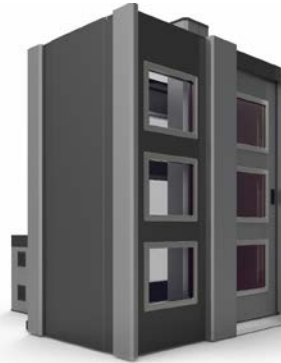
Telephone : +44 (0)1295 756300

Fax : +44 (0)1295 756302

E-Mail : info@wi-ltd.com

Website : www.wi-ltd.com

## WG CP Body Scanner X-Ray Shielding Cabin



The WG CP Body Scanner X-ray Shielding Cabin is the best solution for crowded areas and locations where there is a need to minimize the radiation safety zone. Specifically designed for crowded areas with space limitations.

The cabin can be integrated with various data gathering devices such as CCTV cameras, access control systems and others.

This X-Ray shielding cabin is designed to be used with the CP full body x-ray screening system in order to minimize the radiation safety zone around the device

### STANDARD FEATURES

- Door interlocks insure radiation safety outside the cabin and provide protection should a door be opened during operation
- Equivalent lead penetration allows the operators and bystanders to be in close proximity to the X-ray scanning system without any harm
- Front and back sliding doors allow the cabin to be used in a variety of operational scenarios
- Optional X-ray protective glass windows allow operators to maintain light of sight of scanned individuals at all times
- The WG CP Body Scanner X-ray Shielding Cabin is designed for crowded locations where there is a need to minimize or eliminate the X-ray safety zone around the CP Body Scanner

### SPECIFICATION

- Number of windows - Optional, up to 12
- Overall dimensions (LxWxH) - 1960 x 1100 x 2255 mm, 77.17" x 43.81" x 88.78"
- Sliding doors control - Manual
- Weight - Near 1 000 kg / 2 204 lbs

