



WESTMINSTER

INTERNATIONAL LTD

Telephone : +44 (0)1295 756300

Fax : +44 (0)1295 756302

E-Mail : info@wi-ltd.com

Website : www.wi-ltd.com

WG Digital CCD Portable X-Ray System



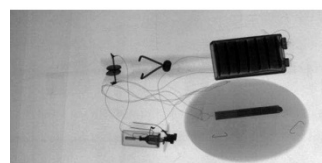
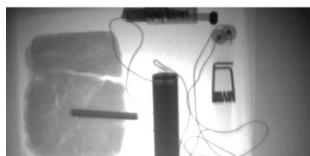
The WG Digital CCD Portable X-Ray System is a multiple application x-ray unit used by police, military, EOD, customs, law enforcement agencies, prisons and building security managers for security checking unattended bags and suspicious packages.

The Portable X-Ray System is easily set up and deployed within minutes by one person and can be configured for a variety of operating environments. It is supplied with a choice of X-ray generators, different size Image Capture Units (ICUs), standard, notebook or ruggedised laptops and has wireless and ROV capabilities.

The Portable X-Ray System is designed to be easy to set up and use. It combines just three core components - ICU, X-ray generator and laptop with no separate Interface box or external battery pack required. Data is transmitted from the ICU to the laptop via standard Ethernet cable.

Operates with any of the Golden pulsed x-ray generators, the Imaging software can be installed on any Windows XP or Windows 7 laptop or tablet. Images are transmitted instantaneously via a data transmission cable or through an optional wireless network. Multiple exposures can be taken without the need to re-approach the target.

The imaging software allows images to be enhanced, stitched, rotated and stored for evidential purposes. Areas of interest can be isolated for closer scrutiny whilst measurement and grid tools help with Bomb Disposal tasks. Images can be annotated and exported in windows formats or report writing or printing.



STANDARD FEATURES

- 50m cable on reel
- 8 x 10" CCD X-ray imager (ICU)
- Direct CCD x-ray image viewing with fast rescans and no return to target to retrieve image plate
- Ethernet Cable or wireless operation
- High specification laptop
- Integrated System Chargers
- Portable and easy to set up and use in 2 minutes
- Range of Image Capture Units from 8 x 10" up to 16 x 22"
- Security imaging software
- Spare generator battery
- WG200 X-ray generator
- Wheeled Peli style Transit Case

Range of Imager Sizes

- A compact 20 x 25cm, larger format 28 x 38cm and 33 x 43 cm for checking objects such as hand luggage.
- Custom size imagers are also available

Battery Operation

- Fully portable and all components will operate independently using a battery pack for up to 5 hours with no reliance on mains power.
- The charger system is integrated within the systems case allowing simultaneous charging of all system components.

Safe

- X-Ray Generator is controlled from a distance using the system's software.
- Multiple X-rays of varying exposure times can be taken in seconds without the need to re-approach the target.

Integrated with other EOD Components

- Compatible with the complete range of safe pulsed generators and can also be used with industrial CP generators making a straightforward upgrade from Polaroid film.
- Imagers and X-ray generators can be mounted and integrated with most modern Remotely Operated Vehicles (ROVs).

No processing nor consumable costs

- Upgrading to Digital DR imaging from Polaroid film means no more expensive processing and consumables costs and the ability to store and manage X-ray images digitally or better and easier report writing and record keeping.

OPTIONAL FEATURES

- 50/100/150 m Cable Extensions
- Custom Cases and Backpackable Systems
- External Camera
- Foreign Language Software
- Imager and Generator Tripod Mounts
- ROV Robot Integration
- Wireless Image Transmission 802.11g
- Wireless X-ray Trigger

X-Ray Generator

WG200 Standard Generator

- Applications: Police, General Security, Postal Blast Investigation
- Dimensions: 31.75 (l) x 11.5 (w) x 19 (h) cm
- Penetration: 15mm steel
- Pulses per charge: 4,000
- Weight: 5.5kgs with battery

WG150 Lightweight Generator

- Applications: Special Forces, Light Duty
- Dimensions: 10.4 (l) x 8 (w) x 27.3 (h) cm
- Penetration: 15mm steel
- Pulses per charge: 1,500
- Weight: 2 kgs with battery

WG-3 Heavy Duty Generator

- Applications: Military, Counter IED, UXO Inspection, TSCM, NDT
- Dimensions: 35.5 (l) x 11.5 (w) x 19 (h) cm
- Pulses per charge: 4,000
- Standard Penetration: 26mm steel
- Weight: 5.5kgs with battery

Laptop Options

- Other brand name variants and ruggedized MilSpec models with foreign keyboard and OS options are available.
- The system is supplied with a high performance laptop running Windows 7 Professional 32 bit. Minimum spec: Intel Dual Core Processor, 500 GB Hard Drive, 4 Gb Memory.
- Wireless option (802.11G)



SPECIFICATION

X-ray Imaging Area

- Standard Compact: 8 x 10" (20 x 25 cm)
- 10 x 13" (25 x 33 cm)
- 11 x 15"
- 13 x 17"
- 16 x 22"

Size and Weight

- Standard 8 x 10 ICU
- Weight – 5.5kg

Power

- Battery Operation: 5 Hours
- Battery Type: Lithium Ion Rechargeable
- Charging System: 100-240V AC
- Recharge: 8 hours

X-Ray Generator

- Size: 31.73 cm x 11.5 cm x 19 cm (12.5" x 4.5" x 7.5")
- Weight 5.5 kgs (12 lbs)
- Penetration: 15mm steel
- Photon Energy: 150 Kv

Laptop

- 10/100 LAN
- 15.4" WXGA Screen (1280x800) Glare / WSXGA+ (1680x1050) Glare
- 160Gb Hard Disk Drive
- 2Gb DDR2 800 Memory
- Card Reader
- DVD+/- RW Drive
- Intel P8400 Core 2 Duo 2.26Ghz 1066FSB 3MB Mobile
- Optional 802.11g Wireless LAN
- RJ-45, USB, VGA
- Serial ATA Hard Drive, up to 500GB
- Vidia GeForce Go 9600M GT 512MB Video
- Windows 7 Professional (English)

Image Processing

- A range of annotation tools: Insert text, notes and highlight suspect areas.
- Image Database and Incident Management Tools
- Zoom, inverse Image, b/w, pseudo colour, pseudo 3D, contrast enhancement, clean image, rotation, distance, measure and show gradients.

X-RAY IMAGING SOFTWARE FEATURES

- 3D (Emboss) Image
- Ability to back up database
- Accumulation of Pulses (Summing)
- Annotate Images, Save Annotations
- Brightness and Contrast

X-RAY IMAGING SOFTWARE FEATURES

- Audible and Visual Warning during X-ray activation
- Battery Monitor
- Calibrate measurements
- Clean
- Compact Database
- Copy/paste
- Digital Zoom
- Edge Enhancement, Find Edges
- Email option
- Fax
- Foreign language options
- Gamma Correction/Stretch
- Grid Overlay
- Histocontrast
- Histogram Equalisation
- Image Stitching and Cropping
- Import/Export Images
- Incident Reference Creation
- Inverse (polarity) image
- Multiple Undo, Image Restore Measure (multiple units)
- Multiple Zoom including
- On-Screen Help
- Overlay
- Password Controlled Safety
- Print
- Pseudo Colour Images
- Query and Sort in database
- Rotate, Flip and Mirror image
- Save to windows formats – jpg, bmp, tif
- Select Region
- Shaped Regions
- Sharpening
- Smoothing
- Sub-image
- Summing
- Timeout
- User login
- Visual database of X-ray images including name, date, category, place, file name
- Vocal annotation
- X-ray Firing Delay
- X-ray Generator selection
- X-ray pulse Activation
- X-ray pulse setting
- zoom thumbnail window
- Zoom to region of interest

SPECIFICATION

Imaging Panels

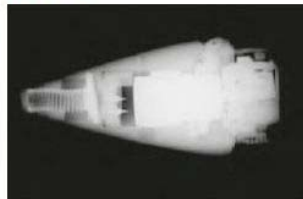
	WG 10	WG 13	WG 15	WG17
Imaging Area	20 x 25 cm - 8 x 10"	25 x 33 cm - 10 x 13"	28 x 38 cm - 11 x 15"	33 x 43 cm - 13 x 17"
Imager Size	180 x 330 x 340 mm	200 x 420 x 420 mm	220 x 455 x 460 mm	200 x 500 x 520 mm
Imager Weight	6kgs	7.1kgs	7.8kgs	9kg
Resolution	582 x 752 pixels	582 x 752 pixels	582 x 752 pixels	582 x 752 pixels
Receptor	CCD	CCD	CCD	CCD



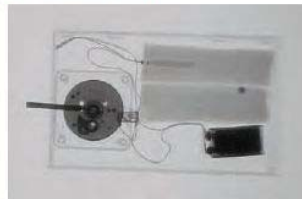
Postal Bomb Identification



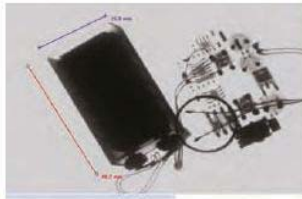
EOD Tasks



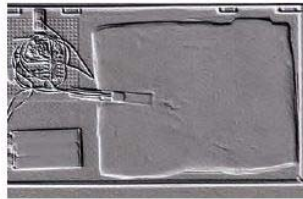
IED Identification



Measurement Tools



3D style Image



Stitch Images

