

**Catalog # 108T**
**Item number: 42650**
**Description:**

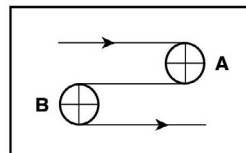
2 Ply Poly 22 Gray Teflon FDA

**International Designation:**

E2/2 U0/T1 Gray Teflon FDA

**Construction:**

Compound Top Cover	Grey Teflon
Top Cover Thickness (in)	(0.00 mm) 0.0000 in
Top Cover Description	Smooth
Top Cover Shore	N/A
Compound Bottom Cover	Polyester
Bottom Cover Thickness (in)	(0.00 mm) 0.0000 in
Bottom Cover Description	Bare
Bottom Cover Shore	N/A
Number of Plies	2
Anti Static	No
Overall Gauge (in)	(1.30 mm) 0.0512 in
Unit Weight- lb/PIW	0.0222 lbs/PIW
Material Between Plies	PU
Maximum Width (in)	39 in
Temperature Range (°F)- High	176 °F
Temperature Range (°F)- Low	-4 °F

**Pulley Diameter, Minimum**


A) Normal Flex (70.00 mm) 2.7559 in

B) Back Flex (150.00 mm) 5.9053 in

**Belt Strength:**

Pull for 1% Elongation (2 N/mm) 10 lbs/sq in

**Splice Instructions:**

Foil	No
Splice Process	Finger
Press Temperature (°F)	329 °F
Press Pressure (psi)	22 lbs/sq in

Note: Listed above is a guideline only. Every vulcanizer is different and will show different results. We recommend that you do a test splice with your press before attempting the actual belt splice.

**Other:**

Cross Rigid	No
Impression Top	No
Oil Resistant	No
Fire Resistant	No
FDA Approved	Yes

**Special Characteristics:**

#108T features a PTFE sheet cover that has outstanding release characteristics. The belt is food approved and can be finger or skive spliced endless. Its most typical use is found in packaging and gluing operations where hot glue gets on the belt cover and is removed by the use of a rolling surface. Maximum manufacturing width is 1 meter!

\*\*\*\*\*All Values are nominal and subject to change without notice.\*\*\*\*\*

<b>St. Louis, MO</b> 800-727-2358 314-344-8500	<b>Boise, ID</b> 800-423-4469 208-342-4681	<b>Charlotte, NC</b> 800-849-2358 704-949-2100	<b>Grand Prairie, TX</b> 800-727-2358 314-344-8555	<b>Philadelphia, PA</b> 800-777-1314 215-295-1900	<b>Sacramento, CA</b> 800-289-2358 916-419-7191	<b>Vancouver, WA</b> 800-234-2358 360-567-4280	<b>Beltservice Canada</b> 877-210-7423 905-565-9217	<b>Beltservice de Mexico</b> +52 55 53620434 +44 2980 3266
--	--	--	--	---	---	--	---	--



# TEFLON FDA

2 PLY POLY 22 GRAY TEFLON FDA

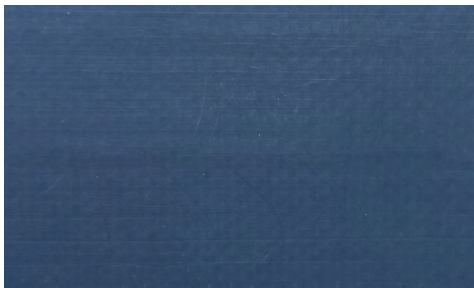
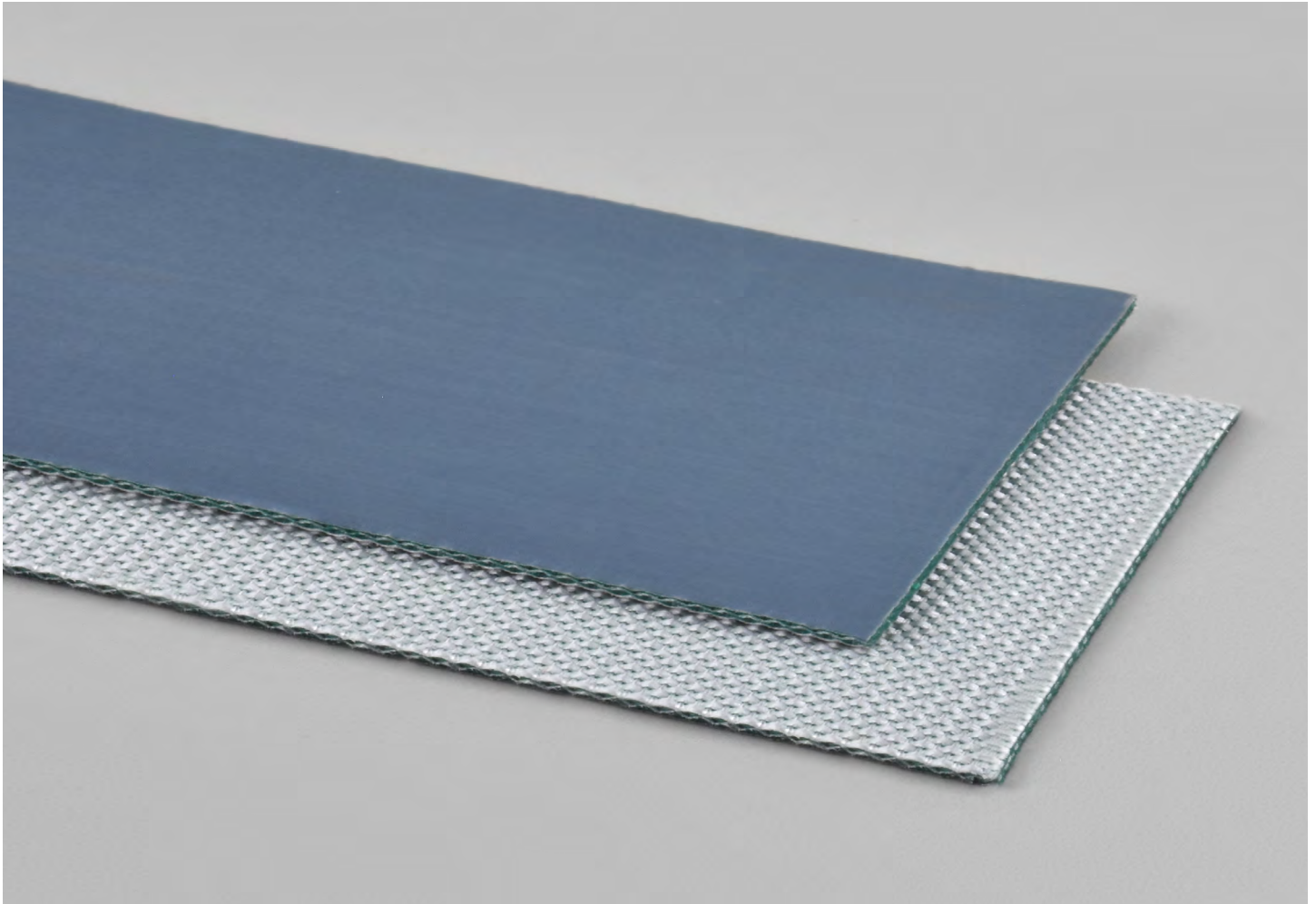
INTERNATIONAL DESIGNATION: E2/2 U0/T1 GRAY TEFLON FDA

**108T**

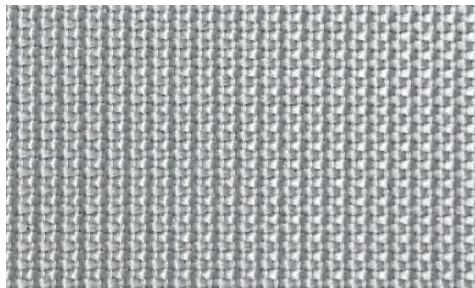
Catalog Number

**42650**

Part Number



Top Cover View



Bottom Cover View



Ply View



**BELTSERVICE**  
CORPORATION

[beltservice.com](http://beltservice.com)

REV 02/24