

Catalog # **16-4**
Item number: **10342**
Description:

4 Ply Solid Woven Cotton

International Designation:

N/A

Pulley Diameter, Minimum

Minimum Pulley Diameter 3.00 in

Belt Strength:

Tension Rating (PIW) 110 PIW

Construction:

Compound Top Cover	White Cotton Fabric
Color	White
Top Cover Thickness (in)	(0.00 mm) 0.00 in
Top Cover Description	Untreated
Compound Bottom Cover	White Cotton Fabric
Bottom Cover Thickness (in)	(0.00 mm) 0.00 in
Bottom Cover Description	Untreated
Number of Plies	4
Overall Gauge (in)	(4.76 mm) 3/16 in
Unit Weight- lb/PIW	0.0560 lbs/PIW
Carcass Type	Cotton
Compound	White Cotton Fabric
Temperature Range (°F)- High	225 °F
Temperature Range (°F)- Low	-40 °F

Splice Instructions:

Splice Step	No
Splice Finger	No

Other:

Static Conducting	No
Cross Rigid	No
High Heat	No
Impression Top	No
Oil Resistant	No
Fire Resistant	No
FDA Approved	Yes

Suggested Fasteners:

Flexco Plate/Rivet	N/A
Flexco Hinged	N/A
Alligator Staple	N/A
Clipper Lace	#3
Alligator Lace	#20

Special Characteristics:

Still a popular conveyor belting, particularly in the food and baking industries. Economical answer to many light and medium conveying needs, especially slider bed applications. The belt is firmly woven; non-rubberized. Number of stripes usually indicates the number of plies. Also can be used as an air-permeable fabric designed for pneumatic conveyors.

*****All Values are nominal and subject to change without notice.*****

St. Louis, MO	Boise, ID	Charlotte, NC	Grand Prairie, TX	Philadelphia, PA	Sacramento, CA	Vancouver, WA	Beltservice Canada	Beltservice de Mexic
800-727-2358	800-423-4469	800-849-2358	800-727-2358	800-777-1314	800-289-2358	800-234-2358	877-210-7423	+52 55 53620434
314-344-8500	208-342-4681	704-949-2100	314-344-8555	215-295-1900	916-419-7191	360-567-4280	905-565-9217	+44 2980 3266

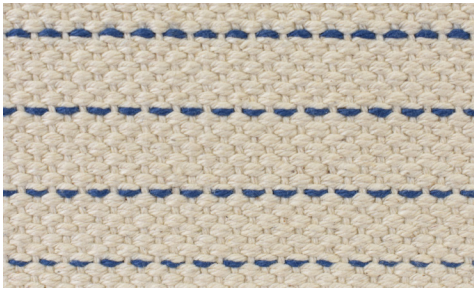
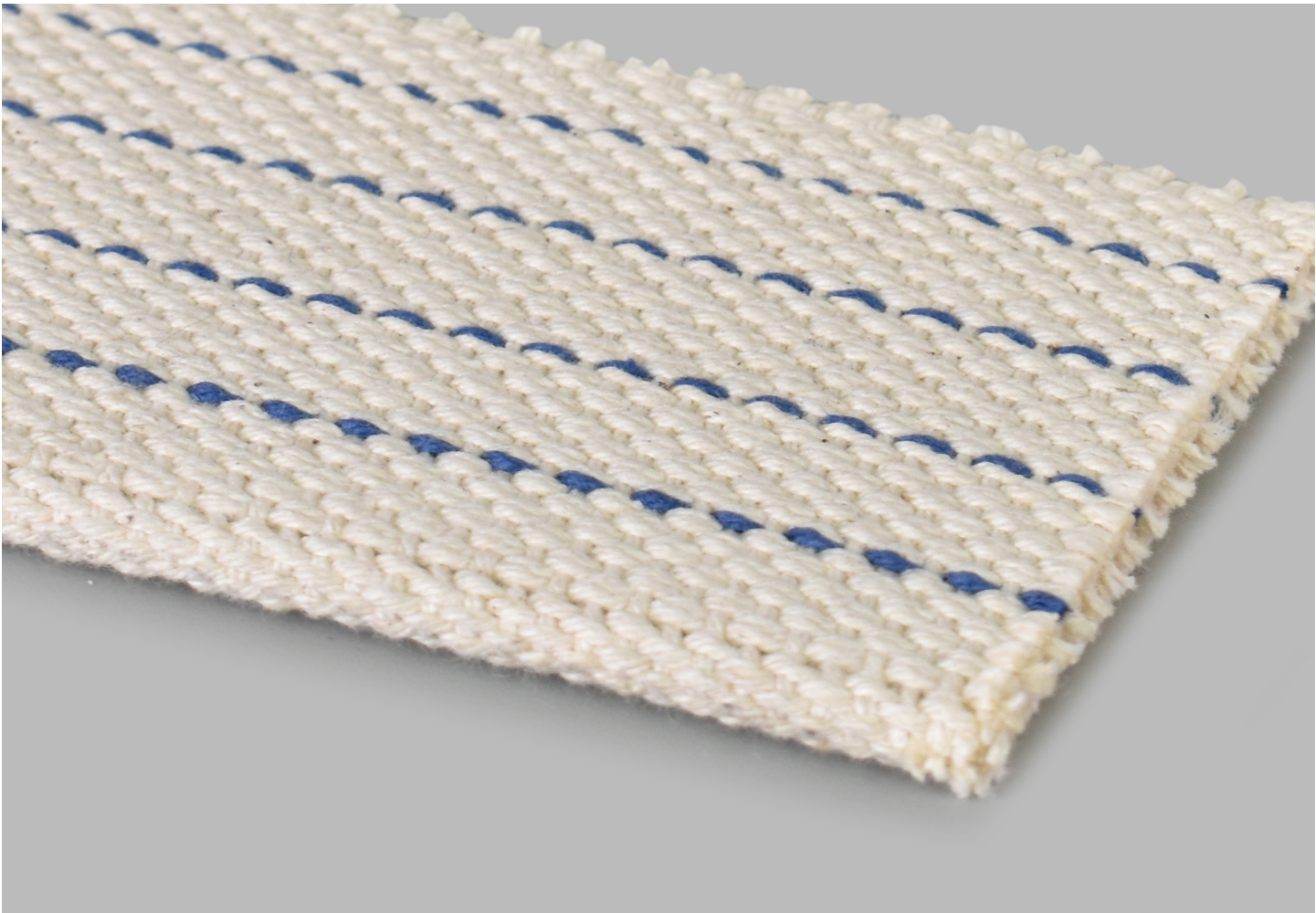
SOLID WOVEN COTTON
4 PLY SOLID WOVEN COTTON

16-4

Catalog Number

10342

Part Number



Top Cover View



Bottom Cover View



Ply View



BELTSERVICE
CORPORATION

beltservice.com