

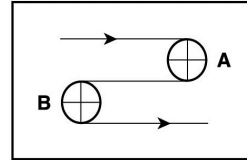
Catalog # 255M

Item number: 42809

Description:
DDB50B3 DEL/DRIVE 50

International Designation:

N/A

Pulley Diameter, Minimum


A) Normal Flex (95.25 mm) 3.7500 in

B) Back Flex (101.60 mm) 4.0000 in

Construction:

Compound Top Cover Polyurethane

Top Cover Description Smooth

Top Cover Shore 95A

Compound Bottom Cover Polyurethane

Bottom Cover Description 2" Pitch Full Width Drive Bars

Bottom Cover Shore 95A

Number of Plies n/a

Anti Static No

Overall Gauge (in) (3.00 mm) 0.1180 in

Unit Weight- lb/PIW 0.0819 lbs/PIW

Maximum Width (in) 70 in

Temperature Range (°F)- High 140 °F

Temperature Range (°F)- Low -4 °F

Belt Strength:

Pull for 1% Elongation (6 N/mm) 36 PIW

Splice Instructions:

Splice Process Butt Weld

Note: Listed above is a guideline only. Every vulcanizer is different and will show different results. We recommend that you do a test splice with your press before attempting the actual belt splice.

Other:

Oil Resistant	Yes
Fire Resistant	No
FDA Approved	Yes

Special Characteristics:

Del/Drive 50 is a 2" pitch full width drive bar monolithic product that combines all the advantages of modular belts without the hygiene issues. Made of polyurethane, Del/Drive 50 is suitable for use in FDA/USDA food applications. The belt operates without tension, reducing stress on the conveyor's mechanical components. Available in widths up to 70".

*****All Values are nominal and subject to change without notice.*****

St. Louis, MO 800-727-2358 314-344-8500	Boise, ID 800-423-4469 208-342-4681	Charlotte, NC 800-849-2358 704-949-2100	Grand Prairie, TX 800-727-2358 314-344-8555	Philadelphia, PA 800-777-1314 215-295-1900	Sacramento, CA 800-289-2358 916-419-7191	Vancouver, WA 800-234-2358 360-567-4280	Beltservice Canada 877-210-7423 905-565-9217	Beltservice de Mexico +52 55 53620434 +44 2980 3266
--	--	--	--	---	---	--	---	--

PROCLEAN POSITIVE DRIVE

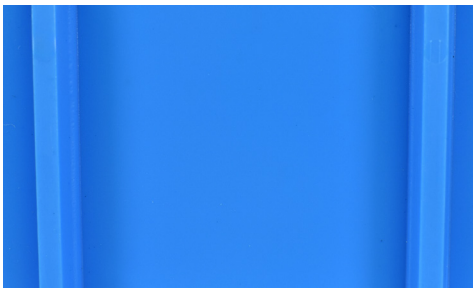
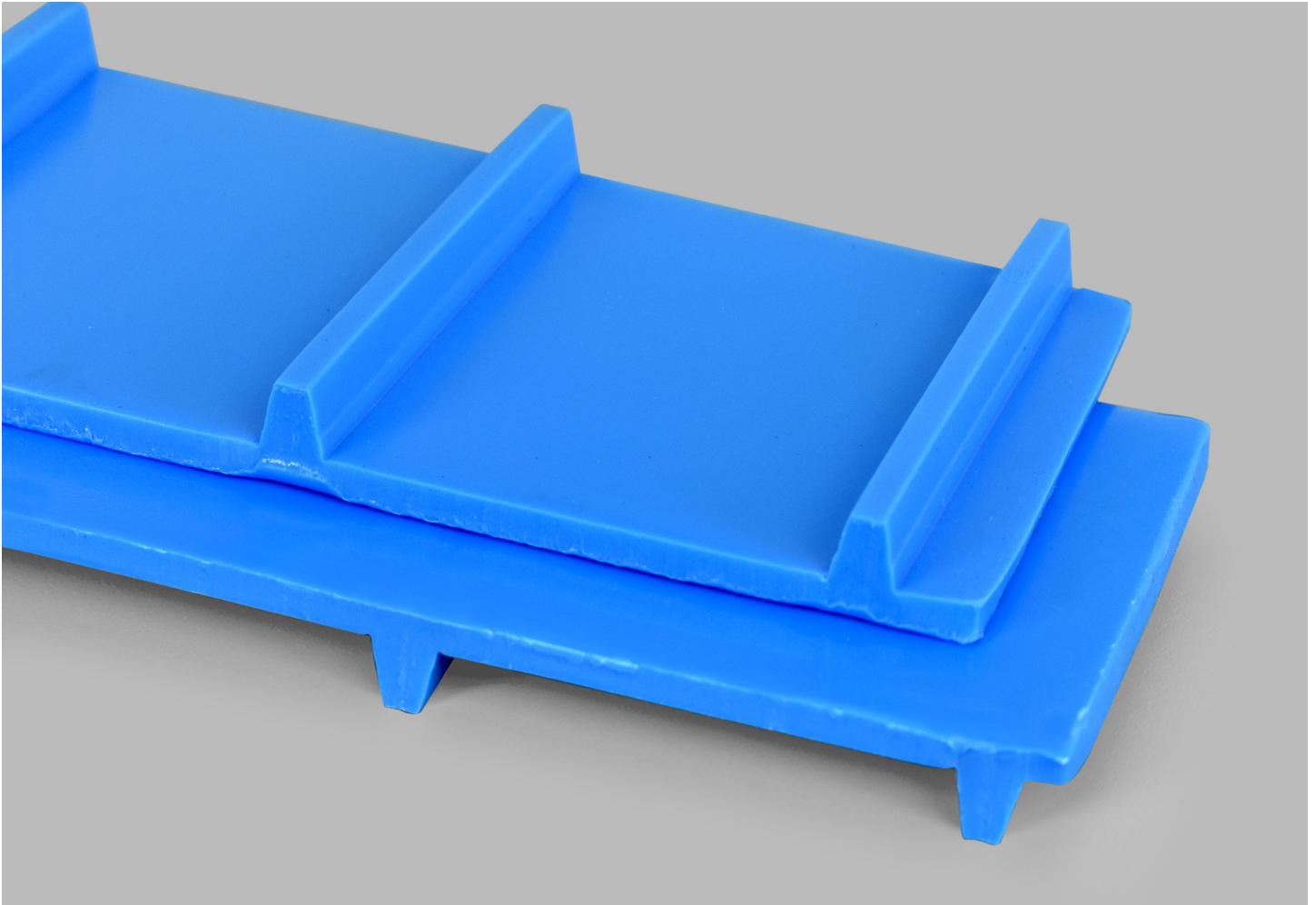
DDB50B3 DEL/DRIVE 50

255M

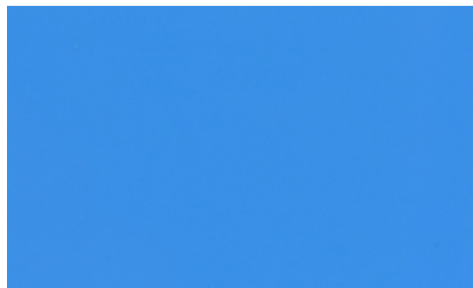
Catalog Number

42809

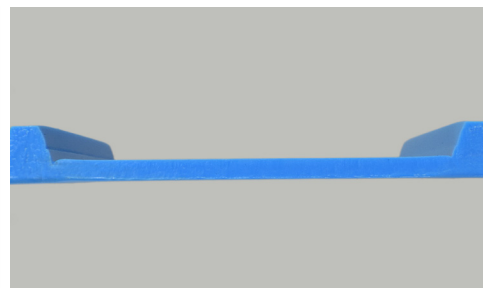
Part Number



Top Cover View



Bottom Cover View



Ply View