

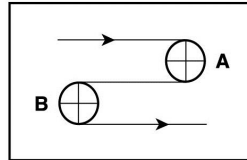
Catalog # **251M**

Item number: **42807**

Description:
DDB25B2.8 DEL/DRIVE 25

International Designation:
N/A

Pulley Diameter, Minimum



A) Normal Flex (48.01 mm) 1.8900 in
B) Back Flex (71.88 mm) 2.8300 in

Construction:

Compound Top Cover	Polyurethane
Top Cover Description	Smooth
Top Cover Shore	93A
Compound Bottom Cover	Polyurethane
Bottom Cover Description	1" Pitch Full Width Drive Bars
Bottom Cover Shore	93A
Number of Plies	n/a
Anti Static	No
Overall Gauge (in)	(2.79 mm) 0.1100 in
Unit Weight- lb/PIW	0.0680 lbs/PIW
Maximum Width (in)	48 in
Temperature Range (°F)- High	140 °F
Temperature Range (°F)- Low	-4 °F

Belt Strength:

Pull for 1% Elongation (3 N/mm) 17 PIW

Splice Instructions:

Splice Process **Butt Weld**

Note: Listed above is a guideline only. Every vulcanizer is different and will show different results. We recommend that you do a test splice with your press before attempting the actual belt splice.

Other:

Oil Resistant	Yes
Fire Resistant	No
FDA Approved	Yes

Special Characteristics:

Del/Drive 25 is a 1" pitch full width drive bar monolithic belt that is designed handle food products over smaller sprocket diameters. The belt is flexible and light, enabling reduced space requirements and better product transfer. Available in widths up to 48".

*****All Values are nominal and subject to change without notice.*****

St. Louis, MO 800-727-2358 314-344-8500	Boise, ID 800-423-4469 208-342-4681	Charlotte, NC 800-849-2358 704-949-2100	Grand Prairie, TX 800-727-2358 314-344-8555	Philadelphia, PA 800-777-1314 215-295-1900	Sacramento, CA 800-289-2358 916-419-7191	Vancouver, WA 800-234-2358 360-567-4280	Beltservice Canada 877-210-7423 905-565-9217	Beltservice de Mexic +52 55 53620434 +44 2980 3266
--	--	--	--	---	---	--	---	---

PROCLEAN POSITIVE DRIVE

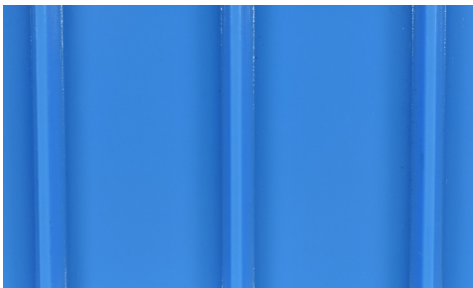
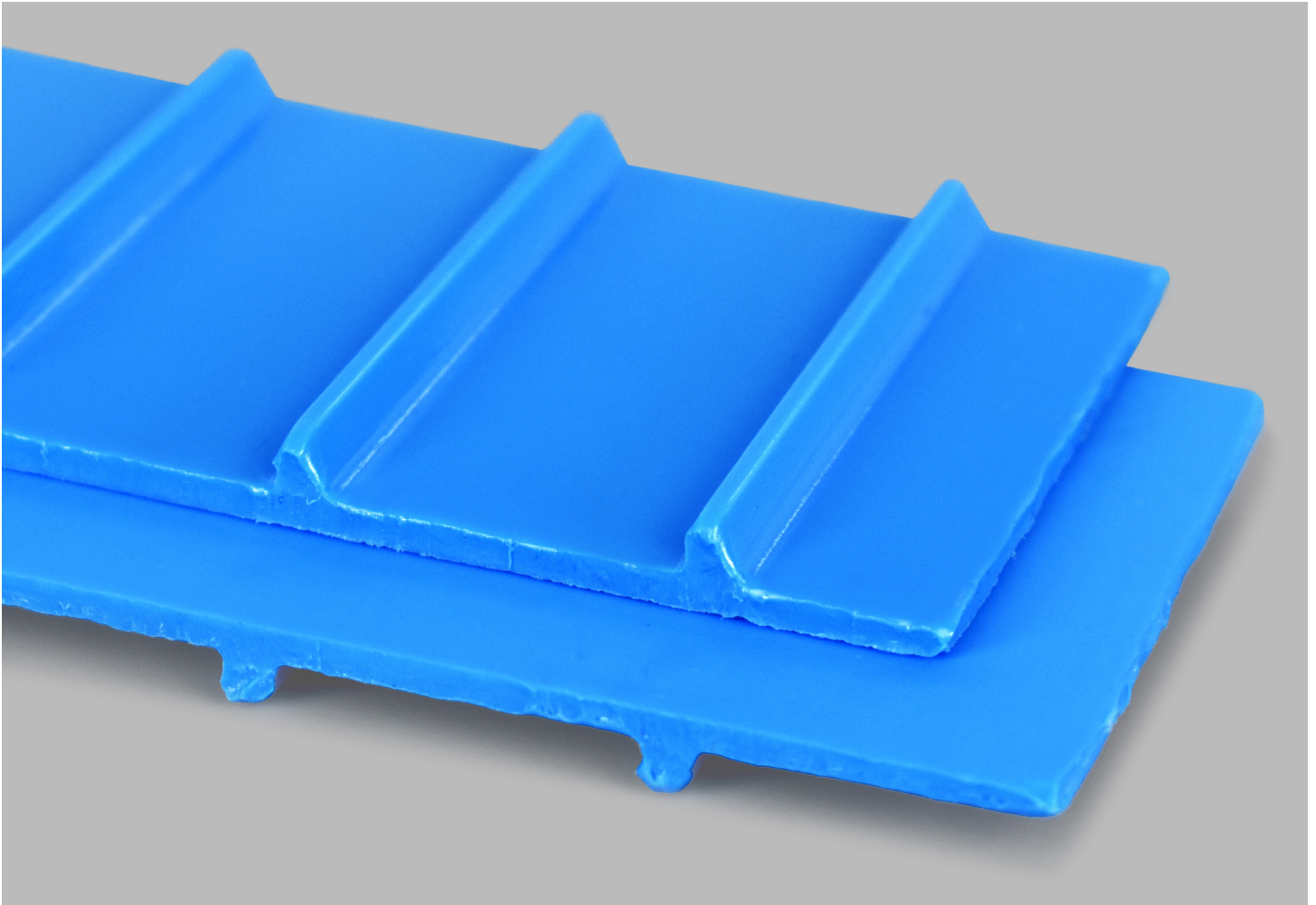
DDB25B2.8 DEL/DRIVE 25

251M

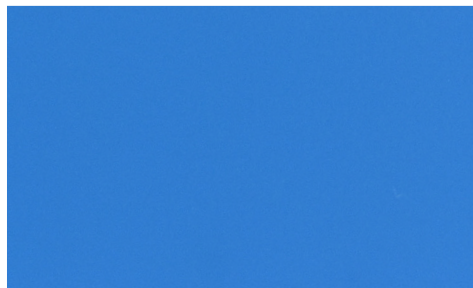
Catalog Number

42807

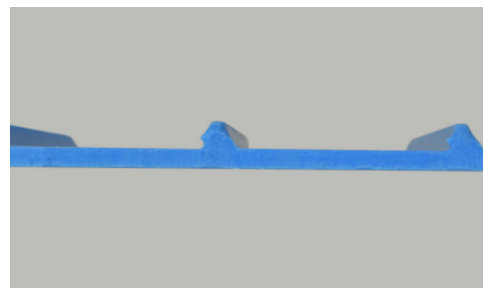
Part Number



Top Cover View



Bottom Cover View



Ply View