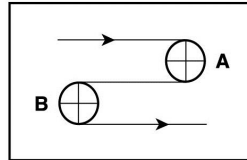


Catalog # **265M**
Item number: **42818**
Description:
PO331LB2 POSITIVEBELT

International Designation:
N/A

Pulley Diameter, Minimum


A) Normal Flex (101.60 mm) 4.0000 in

B) Back Flex (101.60 mm) 4.0000 in

Construction:

Compound Top Cover Polyurethane

Top Cover Description Smooth

Top Cover Shore 95A

Compound Bottom Cover Polyurethane

Bottom Cover Description Dual Rows of Drive
Teeth

Bottom Cover Shore 95A

Number of Plies n/a

Anti Static No

Overall Gauge (in) (3.20 mm) 0.1260 in

Unit Weight- lb/PIW 0.0819 lbs/PIW

Maximum Width (in) 39 in

Temperature Range (°F)- High 140 °F

Temperature Range (°F)- Low -4 °F

Belt Strength:

Pull for 1% Elongation (7 N/mm) 39 PIW

Splice Instructions:

Splice Process Butt Weld

Note: Listed above is a guideline only. Every vulcanizer is different and will show different results. We recommend that you do a test splice with your press before attempting the actual belt splice.

Other:

Oil Resistant Yes
Fire Resistant No
FDA Approved Yes

Special Characteristics:

Positivebelt is a positively driven monolithic urethane product with a revolutionary design. The belt offers exceptional tracking characteristics with dual rows of lugs located on 200mm centers across the belt width. Positivebelt is guided within the gaps of conveyor support rails. Perfect for side loading applications, Positivebelt is a game changer for challenging conveyor set-ups! Available in widths up to 1 meter (39.38").

*****All Values are nominal and subject to change without notice.*****

St. Louis, MO	Boise, ID	Charlotte, NC	Grand Prairie, TX	Philadelphia, PA	Sacramento, CA	Vancouver, WA	Beltservice Canada	Beltservice de Mexic
800-727-2358	800-423-4469	800-849-2358	800-727-2358	800-777-1314	800-289-2358	800-234-2358	877-210-7423	+52 55 53620434
314-344-8500	208-342-4681	704-949-2100	314-344-8555	215-295-1900	916-419-7191	360-567-4280	905-565-9217	+44 2980 3266

PROCLEAN POSITIVE DRIVE

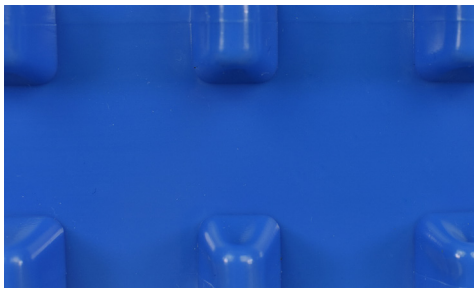
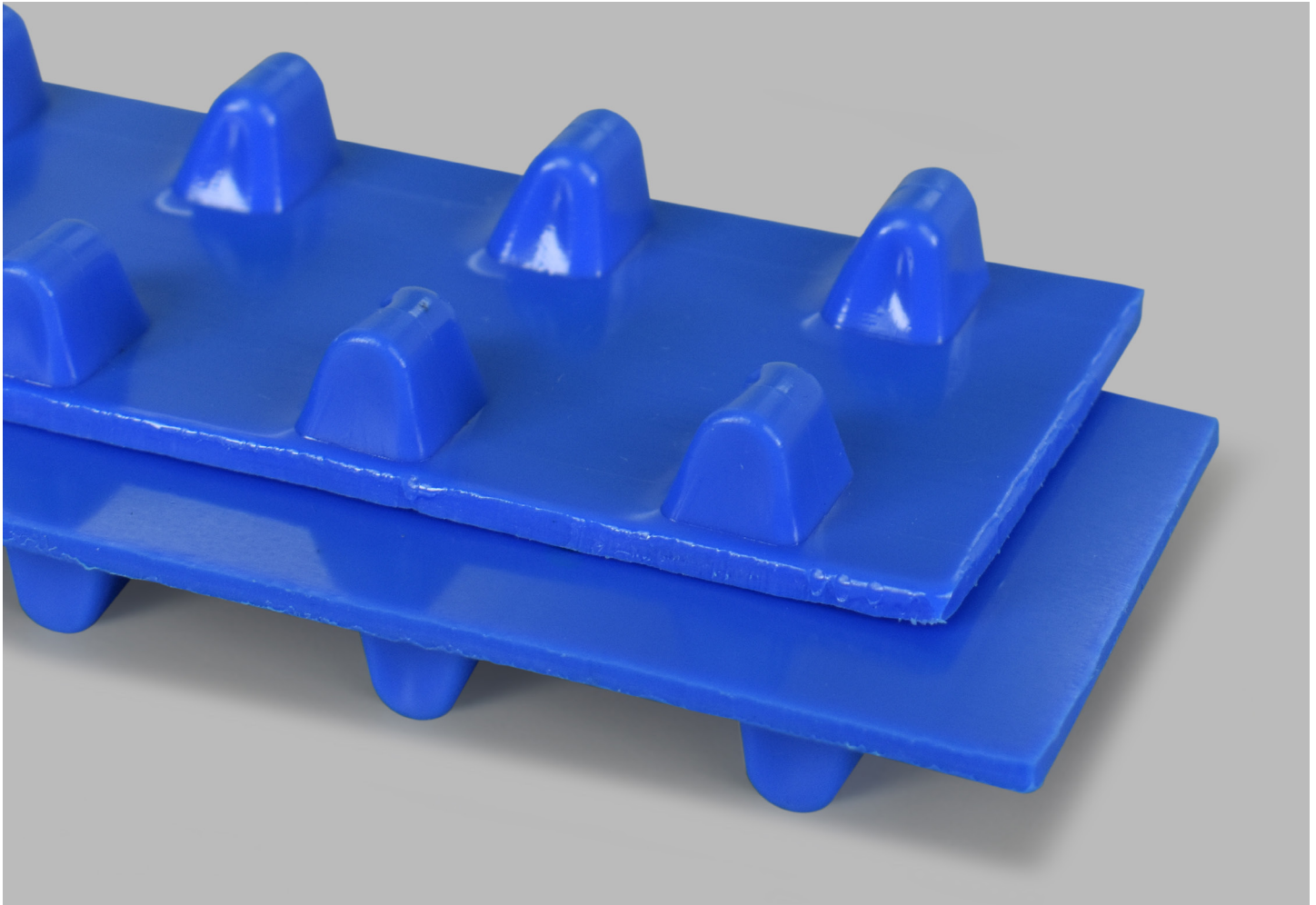
P0331LB2 POSITIVEBELT

265M

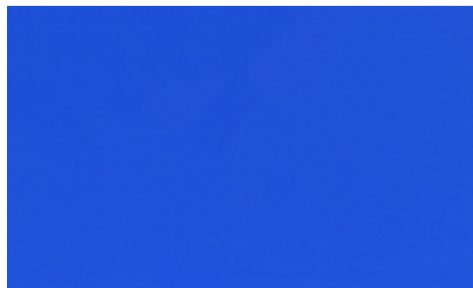
Catalog Number

42818

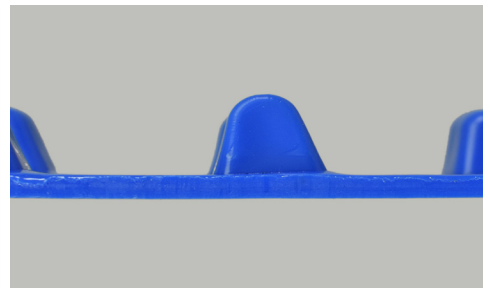
Part Number



Top Cover View



Bottom Cover View



Ply View