

Catalog # **65XT**
Item number: **42207**
Description:

4 Ply 225 Tan Neoprene Steepgrade x Bare

International Designation:

NCB TED100/4 SP106

Pulley Diameter, Minimum

Min. Pulley Dia. - Head @ 80 - 100% Tension 7.00 in

Min. Pulley Dia. - Head @ 60 - 79% Tension 5.50 in

Min. Pulley Dia. - Head @ 59% Tension or Below 4.75 in

Minimum Pulley Diameter- Tail 4.75 in

Construction:

Compound Top Cover Tan NBR/CR

Color Beige

Top Cover Thickness (in) (7.62 mm) 19/64 in

Top Cover Description Cleated

Compound Bottom Cover None

Bottom Cover Thickness (in) (0.00 mm) 0.00 in

Bottom Cover Description Bare

Number of Plies 4

Overall Gauge (in) (14.48 mm) 9/16 in

Unit Weight- lb/PIW 0.2910 lbs/PIW

Carcass Type Polyester

Compound Black SBR

Temperature Range (°F)- High 250 °F

Temperature Range (°F)- Low 0 °F

Splice Instructions:

Splice Step Size 6.00 in

Splice Process Step Hot

Other:

Static Conducting No

Cross Rigid No

High Heat No

Impression Top Yes

Oil Resistant Yes

Fire Resistant Yes

FDA Approved No

Suggested Fasteners:

Flexco Plate/Rivet N/A

Flexco Hinged N/A

Alligator Staple N/A

Clipper Lace #4

Alligator Lace #15

Belt Strength:

Tension Rating (PIW) 225 PIW

Special Characteristics:

UV, Chemical and Oil resistant. Positive Steepclimb pattern is 25mm (w) x 6mm (l) offset. Non-marking. Use for specialty incline such as ski lift or tube lift belts. Use for non-marking vacuum traction belts for corrugator machines. Seamless width up to 118".

*****All Values are nominal and subject to change without notice.*****

St. Louis, MO	Boise, ID	Charlotte, NC	Grand Prairie, TX	Philadelphia, PA	Sacramento, CA	Vancouver, WA	Beltservice Canada	Beltservice de Mexic
800-727-2358	800-423-4469	800-849-2358	800-727-2358	800-777-1314	800-289-2358	800-234-2358	877-210-7423	+52 55 53620434
314-344-8500	208-342-4681	704-949-2100	314-344-8555	215-295-1900	916-419-7191	360-567-4280	905-565-9217	+44 2980 3266

INCLINE SPECIALTY

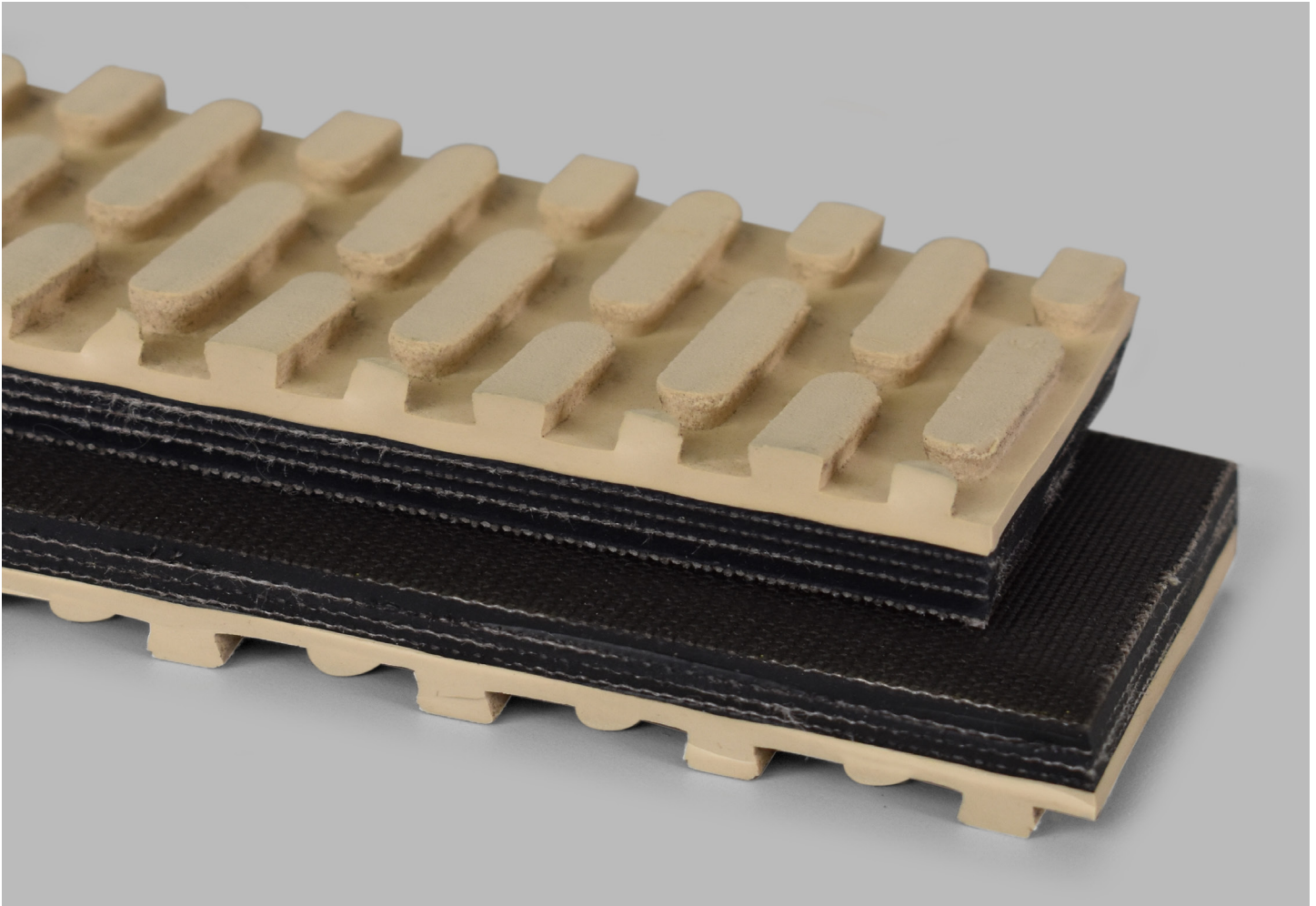
4 PLY 225 TAN NEOPRENE STEEPGRADE X BARE

65xt

Catalog Number

42207

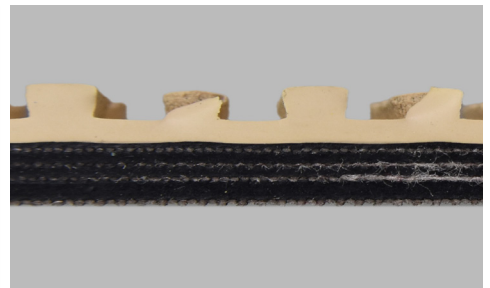
Part Number



Top Cover View



Bottom Cover View



Ply View



BELTSERVICE
CORPORATION

beltservice.com

REV 9/23