

**Catalog #**                      **118FR**
**Item number:**                **25199**
**Description:**

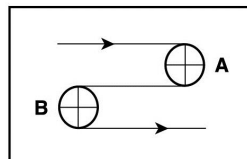
2 Ply Poly CR68 Blk PVC LG x QW FR AS

**International Designation:**

E12/2 V0/V9 Black LG x QW AS FR

**Construction:**

Compound Top Cover	Black PVC
Top Cover Thickness (in)	(0.90 mm) 0.0354 in
Top Cover Description	Longitudinally Grooved
Top Cover Shore	45
Compound Bottom Cover	Polyester
Bottom Cover Thickness (in)	(0.00 mm) 0.0000 in
Bottom Cover Description	Quiet Weave
Bottom Cover Shore	N/A
Number of Plies	2
Anti Static	Yes
Overall Gauge (in)	(2.80 mm) 0.1102 in
Unit Weight- lb/PIW	0.0444 lbs/PIW
Material Between Plies	PVC
Maximum Width (in)	118 in
Temperature Range (°F)- High	176 °F
Temperature Range (°F)- Low	-4 °F

**Pulley Diameter, Minimum**


A) Normal Flex	(30.00 mm) 1.1811 in
B) Back Flex	(50.00 mm) 1.9685 in

**Belt Strength:**

Pull for 1% Elongation	(12 N/mm) 68 lbs/sq in
------------------------	------------------------

**Splice Instructions:**

Foil	Yes
Splice Process	Finger
Press Temperature (°F)	330 °F
Press Pressure (psi)	25 lbs/sq in

Note: Listed above is a guideline only. Every vulcanizer is different and will show different results. We recommend that you do a test splice with your press before attempting the actual belt splice.

**Other:**

Cross Rigid	Yes
Impression Top	Yes
Oil Resistant	No
Fire Resistant	Yes
FDA Approved	No

**Special Characteristics:**

The 118FR is a general incline conveyor belt made of a high grade Flame Retardant PVC cover, capable of inclines up to 45 degrees. The 118FR has a quiet weave anti static carcass and is a great choice for handling baggage in airports, package sorting facilities, distribution centers and bulk mail sort centers. Special care is required in dusty applications as the belt needs to be cleaned on a regular PM schedule.

\*\*\*\*\*All Values are nominal and subject to change without notice.\*\*\*\*\*

<b>St. Louis, MO</b> 800-727-2358 314-344-8500	<b>Boise, ID</b> 800-423-4469 208-342-4681	<b>Charlotte, NC</b> 800-849-2358 704-949-2100	<b>Grand Prairie, TX</b> 800-727-2358 314-344-8555	<b>Philadelphia, PA</b> 800-777-1314 215-295-1900	<b>Sacramento, CA</b> 800-289-2358 916-419-7191	<b>Vancouver, WA</b> 800-234-2358 360-567-4280	<b>Beltservice Canada</b> 877-210-7423 905-565-9217	<b>Beltservice de Mexico</b> +52 55 53620434 +44 2980 3266
--	--	--	--	---	---	--	---	--

## PVC/NBR PROFILE/STICKY TOP COVERS

2 PLY POLY CR57 BLK PVC LG X QW FR/AS

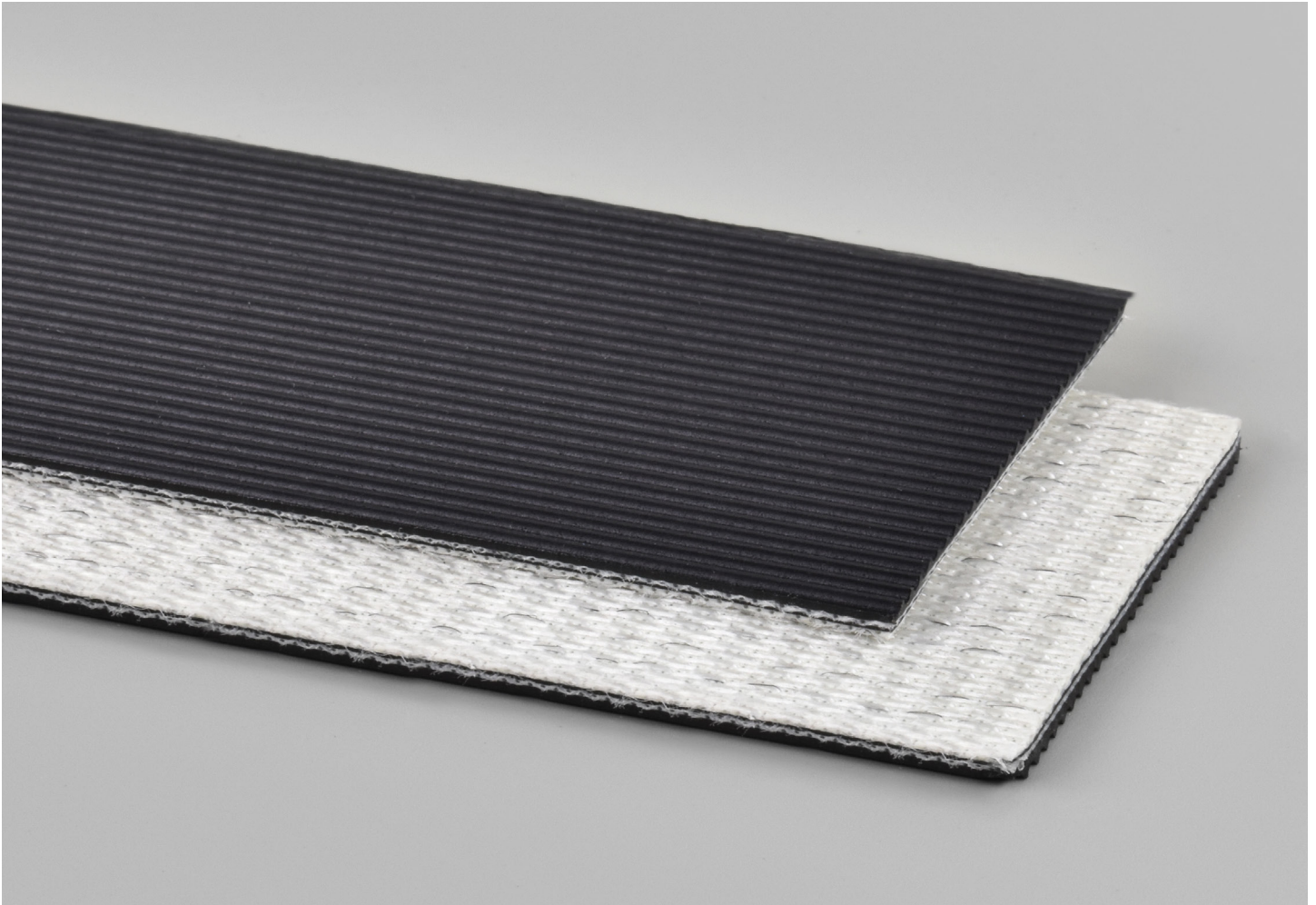
INTERNATIONAL DESIGNATION: E10/2 0/V14 BLACK LG X QW AS FR

**118FR**

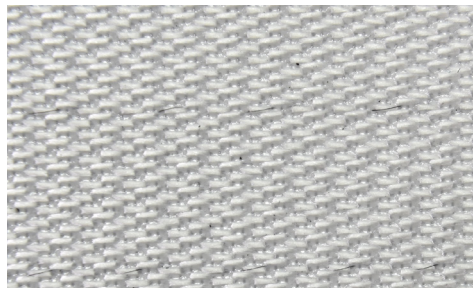
Catalog Number

**25199**

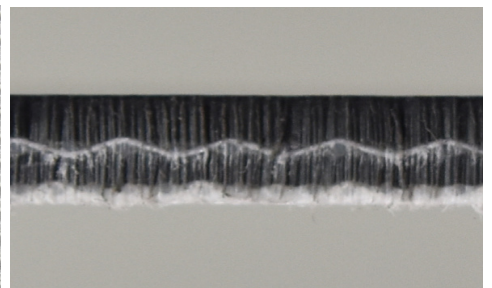
Part Number



Top Cover View



Bottom Cover View



Ply View



**BELTSERVICE**  
CORPORATION

[beltservice.com](http://beltservice.com)

REV 9/23