

**Catalog #**                      **139a**
**Item number:**                **24230**
**Description:**

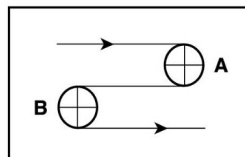
NW 25 Black HC

**International Designation:**

NW 25 HC SF Black

**Construction:**

Compound Top Cover	Polyester Fleece
Top Cover Thickness (in)	(0.00 mm) 0.0000 in
Top Cover Description	Smooth
Top Cover Shore	N/A
Compound Bottom Cover	Polyester Fleece
Bottom Cover Thickness (in)	(0.00 mm) 0.0000 in
Bottom Cover Description	Non-Woven
Bottom Cover Shore	N/A
Number of Plies	1
Anti Static	Yes
Overall Gauge (in)	(2.60 mm) 0.1024 in
Unit Weight- lb/PIW	0.0290 lbs/PIW
Material Between Plies	N/A
Maximum Width (in)	79 in
Temperature Range (°F)- High	250 °F
Temperature Range (°F)- Low	14 °F

**Pulley Diameter, Minimum**


A) Normal Flex                      (38.10 mm) 1.5000 in

B) Back Flex                      (38.10 mm) 1.5000 in

**Belt Strength:**

Pull for 1% Elongation                      (15 N/mm) 85 lbs/sq in

**Splice Instructions:**

Foil	No
Splice Process	Skive
Press Temperature (°F)	180 °F
Press Pressure (psi)	18 lbs/sq in

Note: Listed above is a guideline only. Every vulcanizer is different and will show different results. We recommend that you do a test splice with your press before attempting the actual belt splice.

**Other:**

Cross Rigid	No
Impression Top	No
Oil Resistant	Yes
Fire Resistant	No
FDA Approved	No

**Special Characteristics:**

This belt is manufactured with a nonwoven construction that is highly conductive, wear and cut resistant, quiet running and offers a soft impact surface. Commonly used in automotive applications, mail and post sorting systems, airport luggage handling and distributions centers. This belt resembles a felt like construction suitable for conveying plastic parts or electronic components.

\*\*\*\*\*All Values are nominal and subject to change without notice.\*\*\*\*\*

<b>St. Louis, MO</b> 800-727-2358 314-344-8500	<b>Boise, ID</b> 800-423-4469 208-342-4681	<b>Charlotte, NC</b> 800-849-2358 704-949-2100	<b>Grand Prairie, TX</b> 800-727-2358 314-344-8555	<b>Philadelphia, PA</b> 800-777-1314 215-295-1900	<b>Sacramento, CA</b> 800-289-2358 916-419-7191	<b>Vancouver, WA</b> 800-234-2358 360-567-4280	<b>Beltservice Canada</b> 877-210-7423 905-565-9217	<b>Beltservice de Mexico</b> +52 55 53620434 +44 2980 3266
------------------------------------------------------	--------------------------------------------------	------------------------------------------------------	----------------------------------------------------------	---------------------------------------------------------	-------------------------------------------------------	------------------------------------------------------	-----------------------------------------------------------	------------------------------------------------------------------

# NON WOVEN BELTS

NW 25 BLACK HC

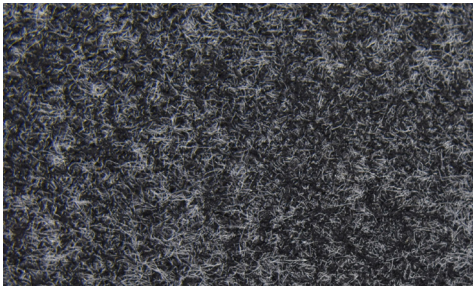
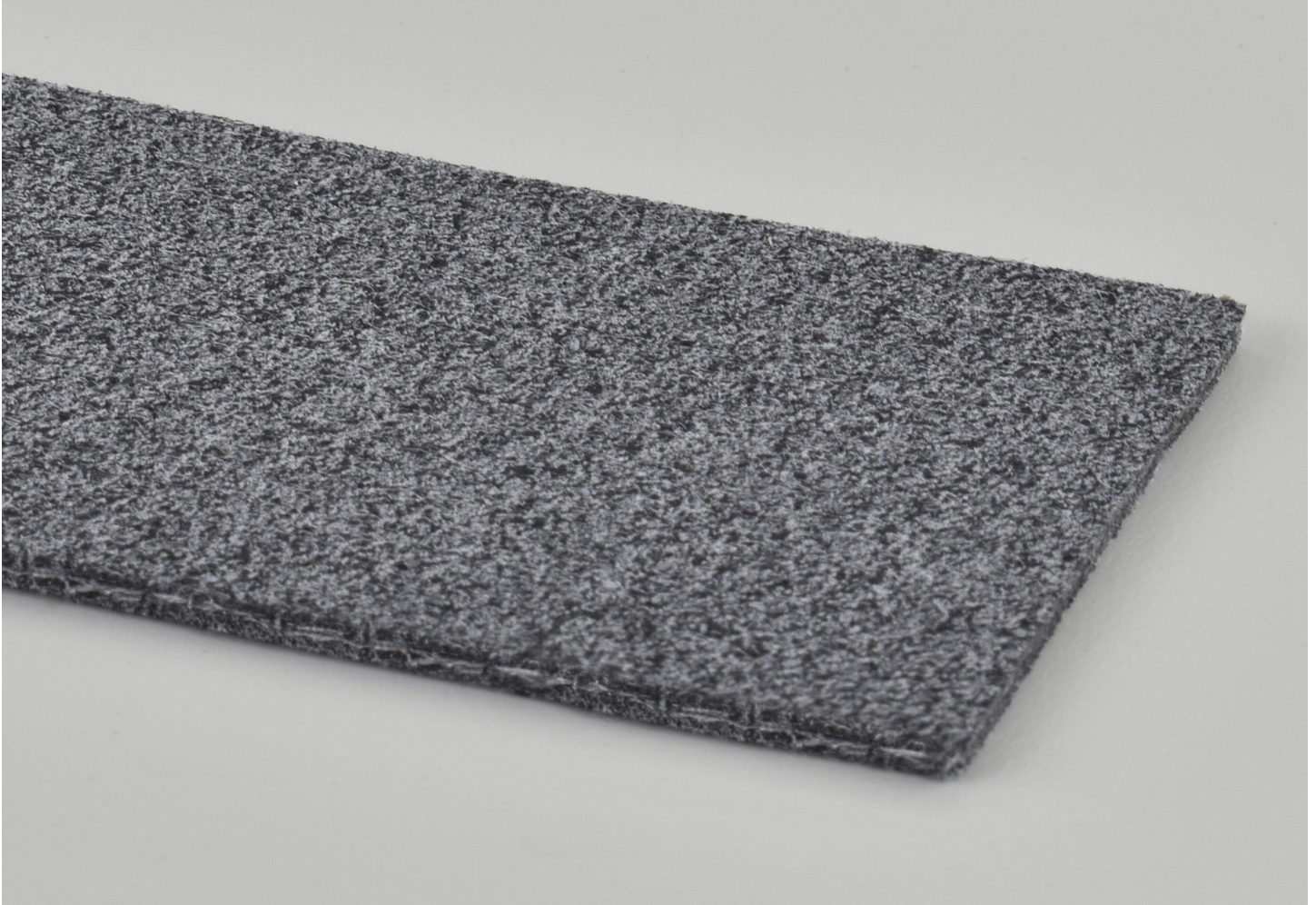
INTERNATIONAL DESIGNATION: NW 25 HC SF BLACK

**139A**

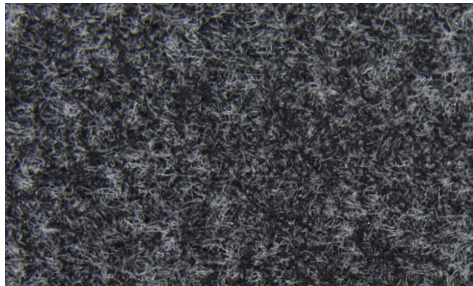
Catalog Number

**24230**

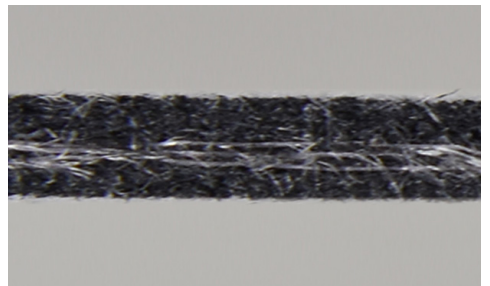
Part Number



Top Cover View



Bottom Cover View



Ply View



**BELTSERVICE**  
CORPORATION

[beltservice.com](http://beltservice.com)

REV 5/23