

Catalog # 118R
Item number: 25036
Description:

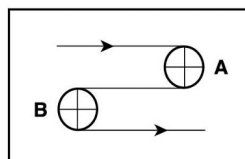
2 Ply Poly CR79 Red PVC LG x Bare AS

International Designation:

E14/2 0/V45 Red LG x B AS

Construction:

Compound Top Cover	Red PVC
Top Cover Thickness (in)	(4.57 mm) 0.1800 in
Top Cover Description	Longitudinally Grooved
Top Cover Shore	45
Compound Bottom Cover	Polyester
Bottom Cover Thickness (in)	(0.00 mm) 0.0000 in
Bottom Cover Description	Bare
Bottom Cover Shore	N/A
Number of Plies	2
Anti Static	Yes
Overall Gauge (in)	(6.35 mm) 0.2500 in
Unit Weight- lb/PIW	0.1175 lbs/PIW
Material Between Plies	PVC
Maximum Width (in)	78 in
Temperature Range (°F)- High	176 °F
Temperature Range (°F)- Low	23 °F

Pulley Diameter, Minimum


A) Normal Flex (50.04 mm) 1.9700 in

B) Back Flex (79.76 mm) 3.1400 in

Belt Strength:

Pull for 1% Elongation (14 N/mm) 79 lbs/sq in

Splice Instructions:

Foil	Yes
Splice Process	Finger
Press Temperature (°F)	330 °F
Press Pressure (psi)	25 lbs/sq in

Note: Listed above is a guideline only. Every vulcanizer is different and will show different results. We recommend that you do a test splice with your press before attempting the actual belt splice.

Other:

Cross Rigid	Yes
Impression Top	Yes
Oil Resistant	No
Fire Resistant	No
FDA Approved	No

Special Characteristics:

This 2 Ply Red Longitudinal Groove belt offers maximum flexibility in a belt with a high grip 4.5mm thick top cover and small 2" minimum pulley allowance. For use in corrugated box applications, inclines/declines and indexing conveyors where speed sorting is required. This belt will out perform all PVC Rough Top belts for case taper applications by 3-4 times the life.

*****All Values are nominal and subject to change without notice.*****

St. Louis, MO 800-727-2358 314-344-8500	Boise, ID 800-423-4469 208-342-4681	Charlotte, NC 800-849-2358 704-949-2100	Grand Prairie, TX 800-727-2358 314-344-8555	Philadelphia, PA 800-777-1314 215-295-1900	Sacramento, CA 800-289-2358 916-419-7191	Vancouver, WA 800-234-2358 360-567-4280	Beltservice Canada 877-210-7423 905-565-9217	Beltservice de Mexic +52 55 53620434 +44 2980 3266
--	--	--	--	---	---	--	---	---

PVC/NBR PROFILE/STICKY TOP COVERS

2 PLY POLY CR79 RED PVC LG X B AS

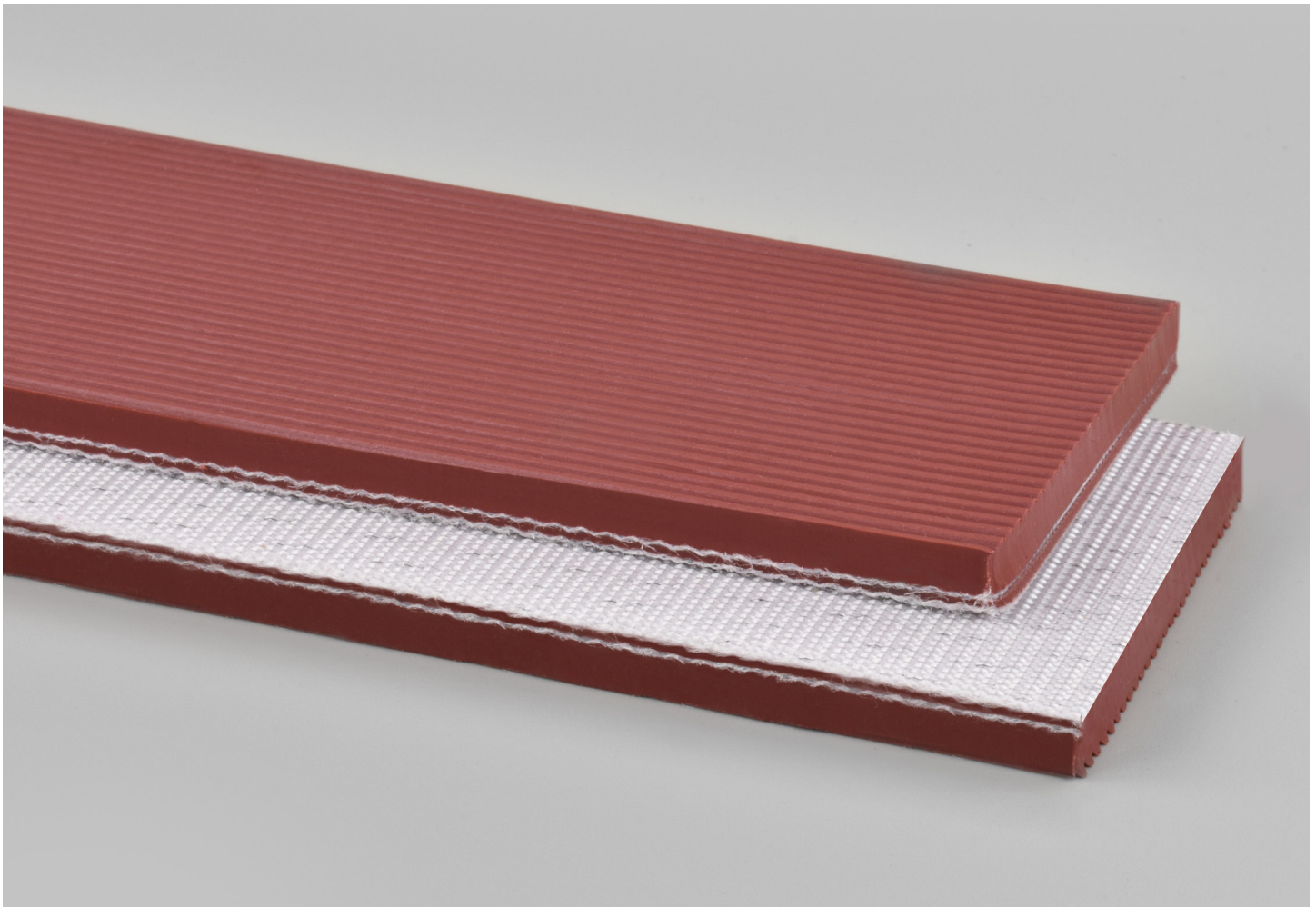
INTERNATIONAL DESIGNATION: E14/2 0/V45 RED LG X B AS

118R

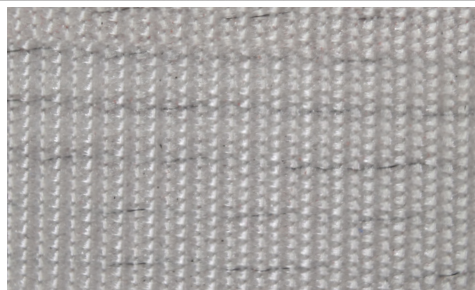
Catalog Number

25036

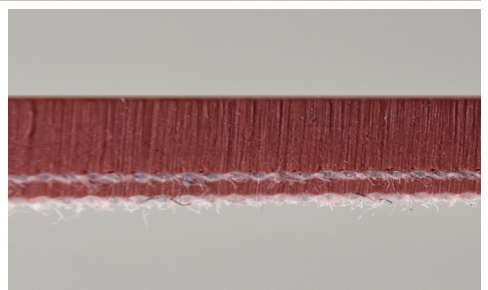
Part Number



Top Cover View



Bottom Cover View



Ply View