



THERMOPLASTIC POLYURETHANE SPECIFICATIONS

LVR-60

BSC #50253

UBR #355200

Overall Thickness	4.5 mm	/ 0.177 inch
Weight	5.4 Kg/Sq M	/ 1.11 Lbs/Sq Ft
Maximum Width	45 mm	/ 0.157 inch
Minimum Pulley - Normal Flex	110 mm	/ 4.33 inch
Minimum Pulley - Reverse Flex	110 mm	/ 4.33 inch
Anti-Static	Yes	
Tension at 0.5%	60 N/mm	/ 342 Lbs. PIW
Tensile Strength	700 N/mm	/ 3997 Lbs./PIW
Elongation at Break	3.50%	
Continuous Operating Temperature Range (Product)	-10 to 60 C	/ 14 to 140 F

Conveying Surface

Material:	Thermoplastic Polyurethane
Surface Feature:	Structured Pattern
Color:	Blue
Coefficient of Friction:	0.5 to 0.6 (On Steel)

Pulley Side Surface

Material:	Polyamide Fabric
Surface Feature:	Bare
Color:	White/Black
Coefficient of Friction:	0.2 to 0.25 (On Steel)

Recommended Splices

Endless:	Finger (10mm x 200mm)
----------	-----------------------

LVR-60 is designed for use on live roller conveyors and narrow belt sorters. Extruded to width, this aramid corded belt has exceptional strength and flex characteristics. It can be finger spliced endless using Nitta Carryflex tooling. With a resin pre-setter, splice cycle times can be as short as 17.5 minutes.

LIVE ROLLER BELT

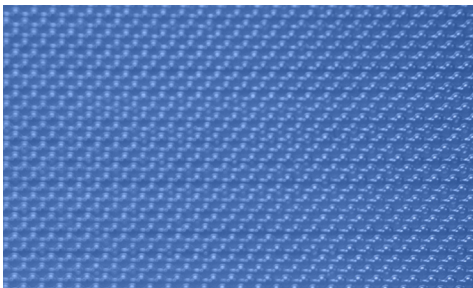
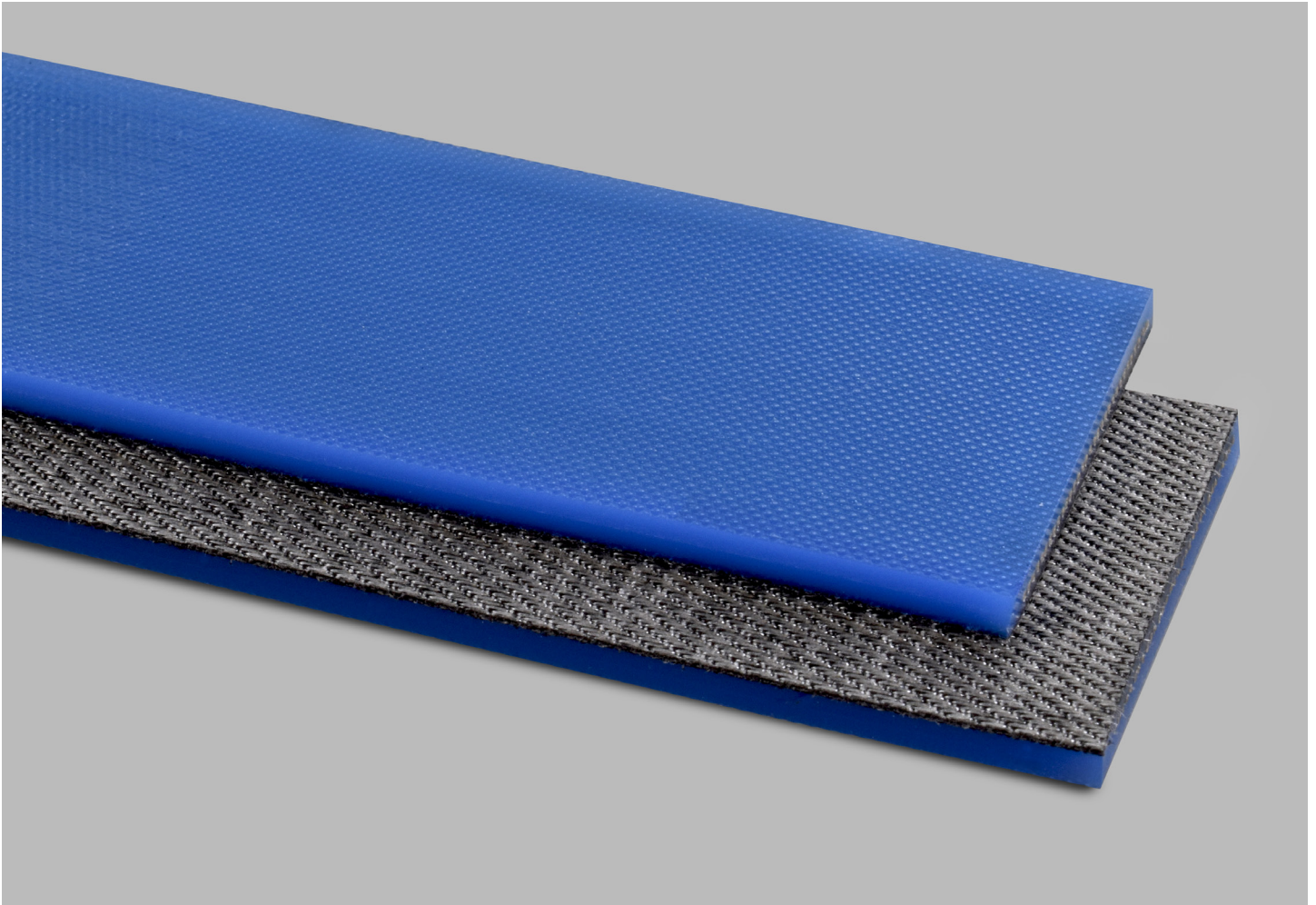
NITTA LVR-60

LVR-60

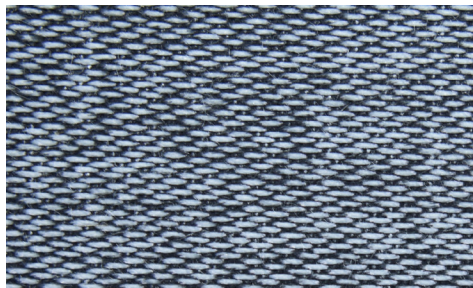
Catalog Number

50253

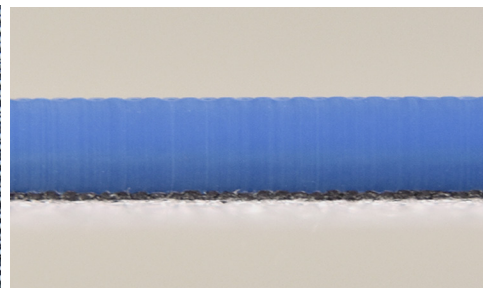
Part Number



Top Cover View



Bottom Cover View



Ply View



BELTSERVICE
CORPORATION

beltservice.com

REV 3/23