

**LRB-50**
**BSC #50340**
**UBR #355100**

Overall Thickness	4.5 mm	/ 0.177 inch
Weight	5.4 Kg/Sq M	/ 1.11 Lbs/Sq Ft
Maximum Width	45 mm	/ 0.157 inch
Minimum Pulley - Normal Flex	110 mm	/ 4.33 inch
Minimum Pulley - Reverse Flex	110 mm	/ 4.33 inch
Anti-Static	Yes	
Tension at 0.5%	40 N/mm	/ 228 Lbs. PIW
Tensile Strength	500 N/mm	/ 2855 Lbs./PIW
Elongation at Break	0.5%	
Continuous Operating Temperature Range (Product)	-10 to 60 C	/ 14 to 140 F

**Conveying Surface**

Material:	Thermoplastic Polyurethane
Surface Feature:	Structured Pattern
Color:	Orange
Coefficient of Friction:	0.5 to 0.6 (On Steel)

**Pulley Side Surface**

Material:	Polyester Fabric
Surface Feature:	Bare
Color:	White/Black
Coefficient of Friction:	0.2 to 0.25 (On Steel)

**Recommended Splices**

Endless:	Finger (10mm x 200mm)
----------	-----------------------

LRB-50 is designed for use on live roller conveyors and narrow belt sorters. Extruded to width, this aramid corded belt has exceptional strength and flex characteristics. It can be finger spliced endless on customer systems using existing splice tooling. With new or upgraded tooling, splice cycle times can be cut down to as little as 17.5 minutes.

# LIVE ROLLER BELT

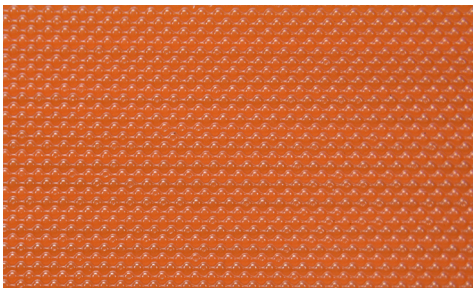
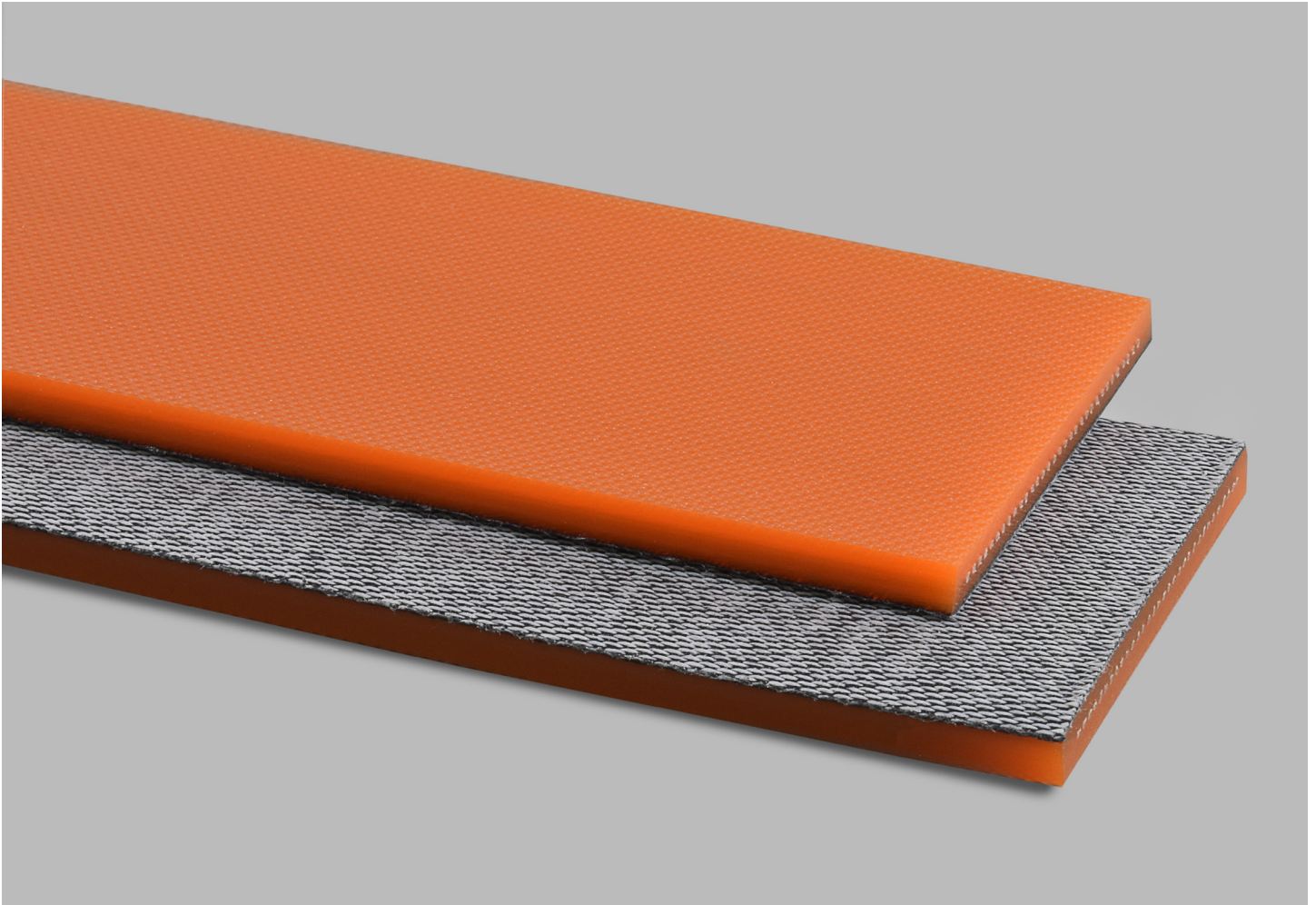
BELTSERVICE LRB-50

**LRB-50**

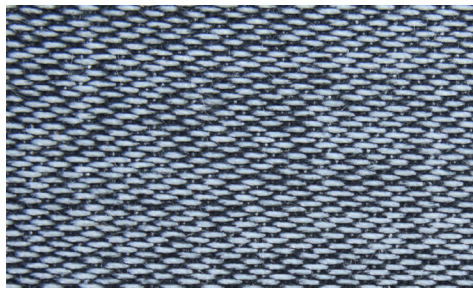
Catalog Number

**50340**

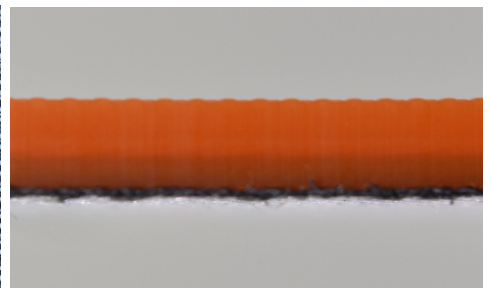
Part Number



Top Cover View



Bottom Cover View



Ply View