

Catalog # 118LT
Item number: 10850
Description:

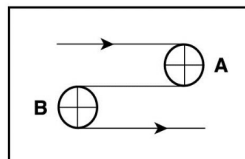
2 Ply Poly CR57 Petrol Green PVC Lattice x QW AS

International Designation:

E10/2 0/V13 Green LT x AS QW

Construction:

Compound Top Cover	Green PVC
Top Cover Thickness (in)	(1.30 mm) 0.0511 in
Top Cover Description	Lattice
Top Cover Shore	35
Compound Bottom Cover	Polyester
Bottom Cover Thickness (in)	(0.00 mm) 0.0000 in
Bottom Cover Description	Quiet Weave
Bottom Cover Shore	N/A
Number of Plies	2
Anti Static	Yes
Overall Gauge (in)	(2.79 mm) 0.1100 in
Unit Weight- lb/PIW	0.0494 lbs/PIW
Material Between Plies	PVC
Maximum Width (in)	118 in
Temperature Range (°F)- High	140 °F
Temperature Range (°F)- Low	-4 °F

Pulley Diameter, Minimum


A) Normal Flex (69.85 mm) 2.7500 in

B) Back Flex (119.89 mm) 4.7200 in

Belt Strength:

Pull for 1% Elongation (10 N/mm) 57 lbs/sq in

Splice Instructions:

Foil	Yes
Splice Process	Finger
Press Temperature (°F)	330 °F
Press Pressure (psi)	25 lbs/sq in

Note: Listed above is a guideline only. Every vulcanizer is different and will show different results. We recommend that you do a test splice with your press before attempting the actual belt splice.

Other:

Cross Rigid	Yes
Impression Top	Yes
Oil Resistant	No
Fire Resistant	No
FDA Approved	No

Special Characteristics:

The 118LT belt consist of a soft 35 Shore A durometer lattice top cover profile. It is excellent for high grip on incline or declines conveyors, indexing or high speed sorter lines in distribution centers. The pulley side has a low noise polyester monofilament carcass that is preferred for reducing the decibel levels in distribution centers.

*****All Values are nominal and subject to change without notice.*****

St. Louis, MO 800-727-2358 314-344-8500	Boise, ID 800-423-4469 208-342-4681	Charlotte, NC 800-849-2358 704-949-2100	Grand Prairie, TX 800-727-2358 314-344-8555	Philadelphia, PA 800-777-1314 215-295-1900	Sacramento, CA 800-289-2358 916-419-7191	Vancouver, WA 800-234-2358 360-567-4280	Beltservice Canada 877-210-7423 905-565-9217	Beltservice de Mexic +52 55 53620434 +44 2980 3266
--	--	--	--	---	---	--	---	---

PVC/NBR PROFILE/STICKY TOP COVERS

2 PLY POLY CR57 PETROL GREEN PVC LATTICE X QW AS

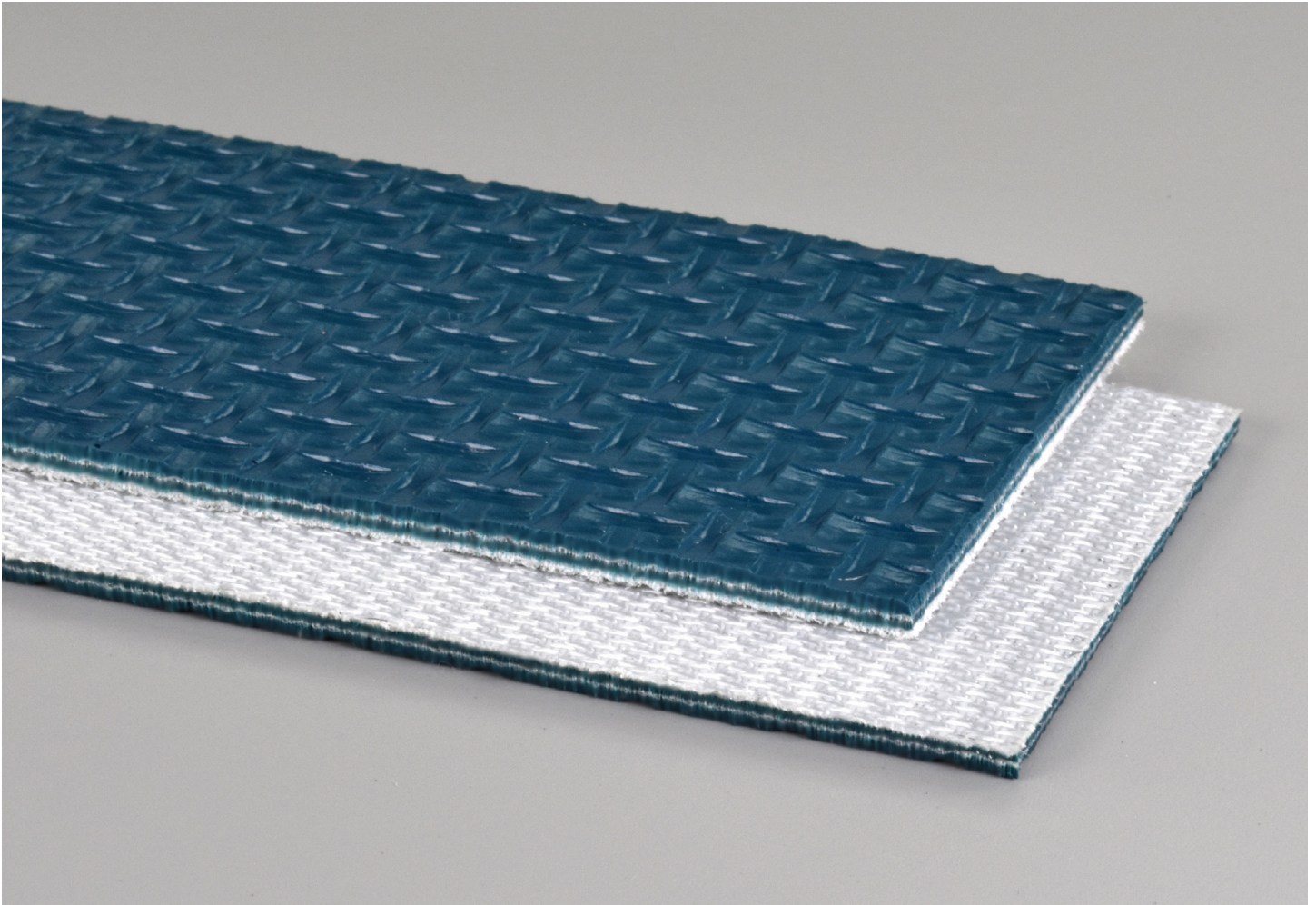
INTERNATIONAL DESIGNATION: E10/2 0/V13 GREEN LT X AS QW

118LT

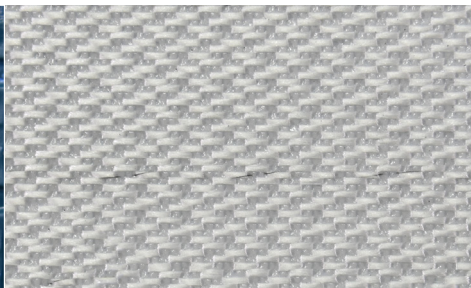
Catalog Number

10850

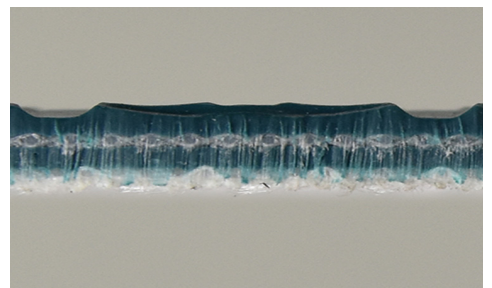
Part Number



Top Cover View



Bottom Cover View



Ply View



BELTSERVICE
CORPORATION

beltservice.com

REV 3/23