

**Catalog # 304MFR**
**Item number: 49839**
**Description:**

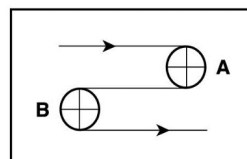
2 Ply 90 Mono SBR Bare x Bare FR

**International Designation:**

PH E15/2 QW/R/MF FR AS

**Construction:**

Compound Top Cover	Bare RFL
Top Cover Thickness (in)	(0.00 mm) 0.0000 in
Top Cover Description	Bare
Top Cover Shore	N/A
Compound Bottom Cover	Bare RFL
Bottom Cover Thickness (in)	(0.00 mm) 0.0000 in
Bottom Cover Description	Bare
Bottom Cover Shore	N/A
Number of Plies	2
Anti Static	No
Overall Gauge (in)	(2.87 mm) 0.1130 in
Unit Weight- lb/PIW	0.0575 lbs/PIW
Material Between Plies	SBR
Maximum Width (in)	72 in
Temperature Range (°F)- High	225 °F
Temperature Range (°F)- Low	-20 °F

**Pulley Diameter, Minimum**


A) Normal Flex (25.40 mm) 1.0000 in

B) Back Flex (25.40 mm) 1.0000 in

**Belt Strength:**

Pull for 1% Elongation (16 N/mm) 90 lbs/sq in

**Splice Instructions:**

Foil	No
Splice Process	n/a
Press Temperature (°F)	0 °F
Press Pressure (psi)	0 lbs/sq in

Note: Listed above is a guideline only. Every vulcanizer is different and will show different results. We recommend that you do a test splice with your press before attempting the actual belt splice.

**Other:**

Cross Rigid	Yes
Impression Top	No
Oil Resistant	No
Fire Resistant	Yes
FDA Approved	No

**Special Characteristics:**

#304MFR is a black 2 ply 90 lb. rated rubber monofilament belt with a low friction surface on both sides. This flame retardant belt is commonly used on accumulating or diverting conveyors in package handling facilities. Stocked in 72" width.

\*\*\*\*\*All Values are nominal and subject to change without notice.\*\*\*\*\*

<b>St. Louis, MO</b> 800-727-2358 314-344-8500	<b>Boise, ID</b> 800-423-4469 208-342-4681	<b>Charlotte, NC</b> 800-849-2358 704-949-2100	<b>Grand Prairie, TX</b> 800-727-2358 314-344-8555	<b>Philadelphia, PA</b> 800-777-1314 215-295-1900	<b>Sacramento, CA</b> 800-289-2358 916-419-7191	<b>Vancouver, WA</b> 800-234-2358 360-567-4280	<b>Beltservice Canada</b> 877-210-7423 905-565-9217	<b>Beltservice de Mexic</b> +52 55 53620434 +44 2980 3266
--	--	--	--	---	---	--	---	---

## BARE/FABRIC COVERED PVC/RUBBER

2 PLY 90 MONO SBR QW X MF FR AS

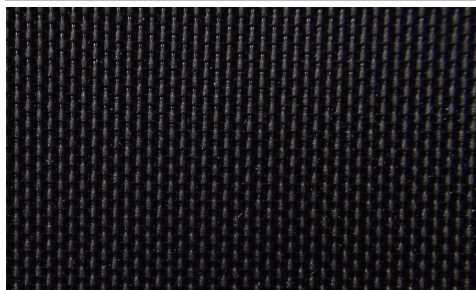
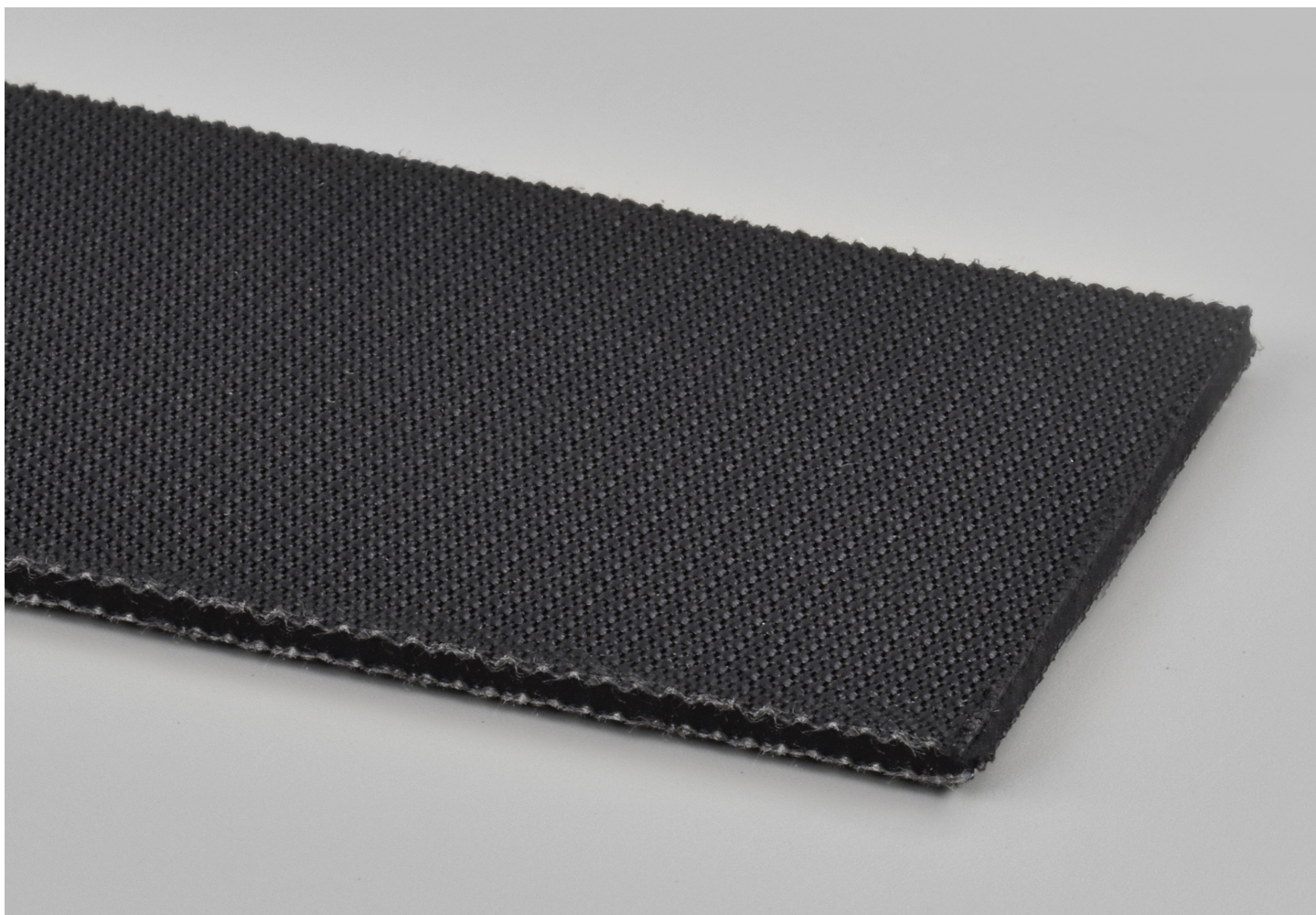
INTERNATIONAL DESIGNATION: PH E15/2 QW/R/MF FR AS

**304MFR**

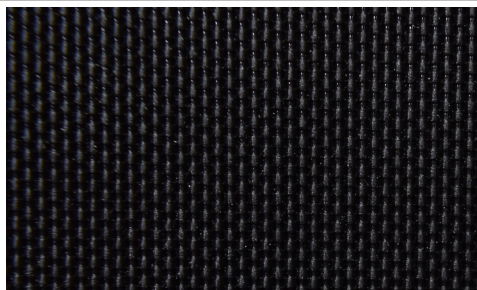
Catalog Number

**49839**

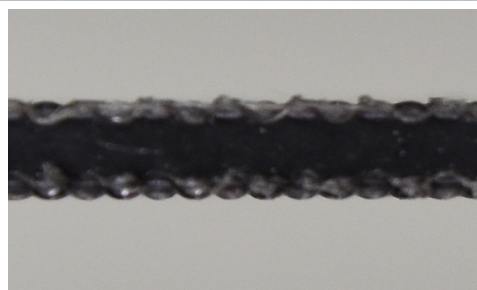
Part Number



Top Cover View



Bottom Cover View



Ply View



**BELTSERVICE**  
CORPORATION

[beltservice.com](http://beltservice.com)

REV 3/23