

Catalog # **139LFO**
Item number: **50570**
Description:

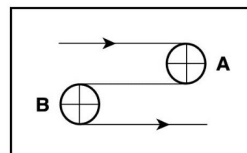
PHSW 150 Black PVC LF SB x B FR-S

International Designation:

N/A

Construction:

Compound Top Cover	Black PVC
Top Cover Thickness (in)	(0.50 mm) 0.0197 in
Top Cover Description	Sand Blast
Top Cover Shore	70A
Compound Bottom Cover	Black PVC
Bottom Cover Thickness (in)	(0.00 mm) 0.0000 in
Bottom Cover Description	Friction Surface
Bottom Cover Shore	N/A
Number of Plies	1
Anti Static	No
Overall Gauge (in)	(4.70 mm) 0.1850 in
Unit Weight- lb/PIW	0.0850 lbs/PIW
Material Between Plies	N/A
Maximum Width (in)	72 in
Temperature Range (°F)- High	180 °F
Temperature Range (°F)- Low	32 °F

Pulley Diameter, Minimum


A) Normal Flex (88.90 mm) 3.5000 in

B) Back Flex (127.00 mm) 5.0000 in

Belt Strength:

Pull for 1% Elongation (26 N/mm) 150 lbs/sq in

Splice Instructions:

Foil	Yes
Splice Process	Finger
Press Temperature (°F)	350 °F
Press Pressure (psi)	19 lbs/sq in

Note: Listed above is a guideline only. Every vulcanizer is different and will show different results. We recommend that you do a test splice with your press before attempting the actual belt splice.

Other:

Cross Rigid	No
Impression Top	Yes
Oil Resistant	No
Fire Resistant	Yes
FDA Approved	No

Special Characteristics:

#139LFO is designed to handle medium duty accumulation and loading applications in distribution centers and airports.

*****All Values are nominal and subject to change without notice.*****

St. Louis, MO 800-727-2358 314-344-8500	Boise, ID 800-423-4469 208-342-4681	Charlotte, NC 800-849-2358 704-949-2100	Grand Prairie, TX 800-727-2358 314-344-8555	Philadelphia, PA 800-777-1314 215-295-1900	Sacramento, CA 800-289-2358 916-419-7191	Vancouver, WA 800-234-2358 360-567-4280	Beltservice Canada 877-210-7423 905-565-9217	Beltservice de Mexico +52 55 53620434 +44 2980 3266
--	--	--	--	---	---	--	---	--

NON WOVEN BELTS

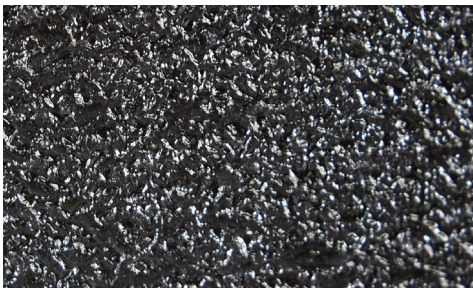
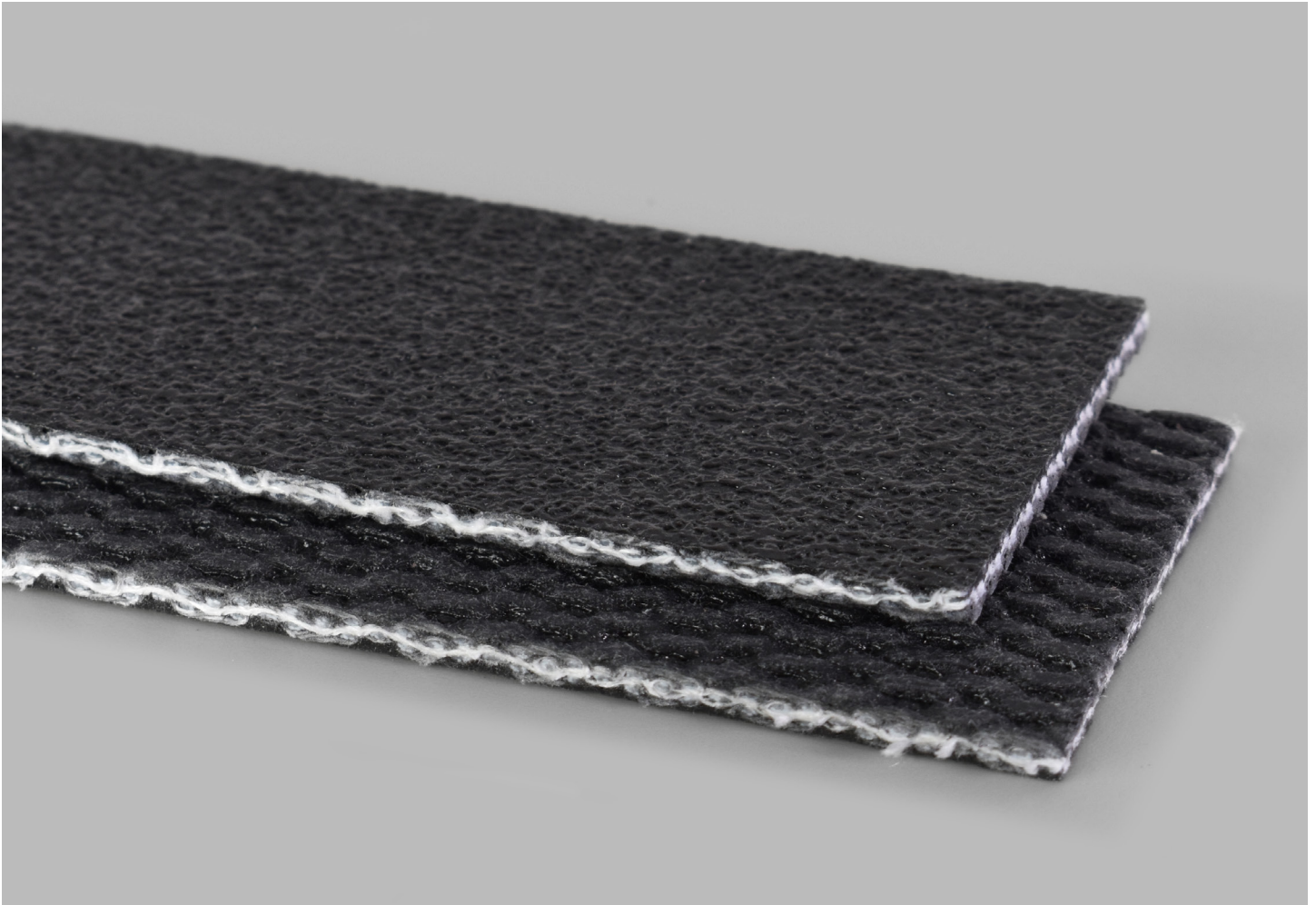
PHSW 150 BLACK PVC LF SB X B FR-S

139LFO

Catalog Number

50570

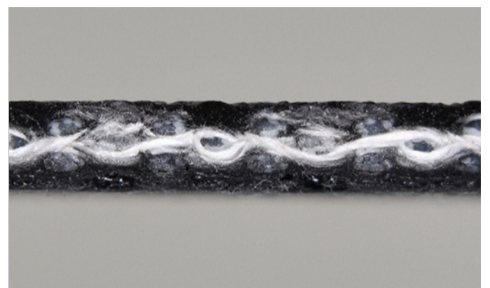
Part Number



Top Cover View



Bottom Cover View



Ply View



BELTSERVICE
CORPORATION

beltservice.com

REV 3/23