

Catalog # 139HFS
Item number: 50573
Description:

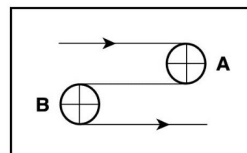
PHSW 200 Black PVC F x B FR

International Designation:

N/A

Construction:

Compound Top Cover	Black PVC
Top Cover Thickness (in)	(0.00 mm) 0.0000 in
Top Cover Description	Friction Surface
Top Cover Shore	N/A
Compound Bottom Cover	Black PVC
Bottom Cover Thickness (in)	(0.00 mm) 0.0000 in
Bottom Cover Description	Brushed
Bottom Cover Shore	N/A
Number of Plies	1
Anti Static	No
Overall Gauge (in)	(5.20 mm) 0.2047 in
Unit Weight- lb/PIW	0.0938 lbs/PIW
Material Between Plies	N/A
Maximum Width (in)	72 in
Temperature Range (°F)- High	180 °F
Temperature Range (°F)- Low	32 °F

Pulley Diameter, Minimum


A) Normal Flex (101.60 mm) 4.0000 in

B) Back Flex (101.60 mm) 4.0000 in

Belt Strength:

Pull for 1% Elongation (35 N/mm) 200 lbs/sq in

Splice Instructions:

Foil	Yes
Splice Process	Finger
Press Temperature (°F)	356 °F
Press Pressure (psi)	29 lbs/sq in

Note: Listed above is a guideline only. Every vulcanizer is different and will show different results. We recommend that you do a test splice with your press before attempting the actual belt splice.

Other:

Cross Rigid	No
Impression Top	No
Oil Resistant	Yes
Fire Resistant	Yes
FDA Approved	No

Special Characteristics:

#139HFS is designed to handle heavy duty accumulation and diverting applications in distribution centers and airports.

*****All Values are nominal and subject to change without notice.*****

St. Louis, MO 800-727-2358 314-344-8500	Boise, ID 800-423-4469 208-342-4681	Charlotte, NC 800-849-2358 704-949-2100	Grand Prairie, TX 800-727-2358 314-344-8555	Philadelphia, PA 800-777-1314 215-295-1900	Sacramento, CA 800-289-2358 916-419-7191	Vancouver, WA 800-234-2358 360-567-4280	Beltservice Canada 877-210-7423 905-565-9217	Beltservice de Mexico +52 55 53620434 +44 2980 3266
--	--	--	--	---	---	--	---	--

NON WOVEN BELTS

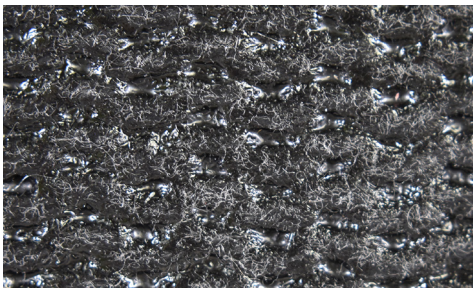
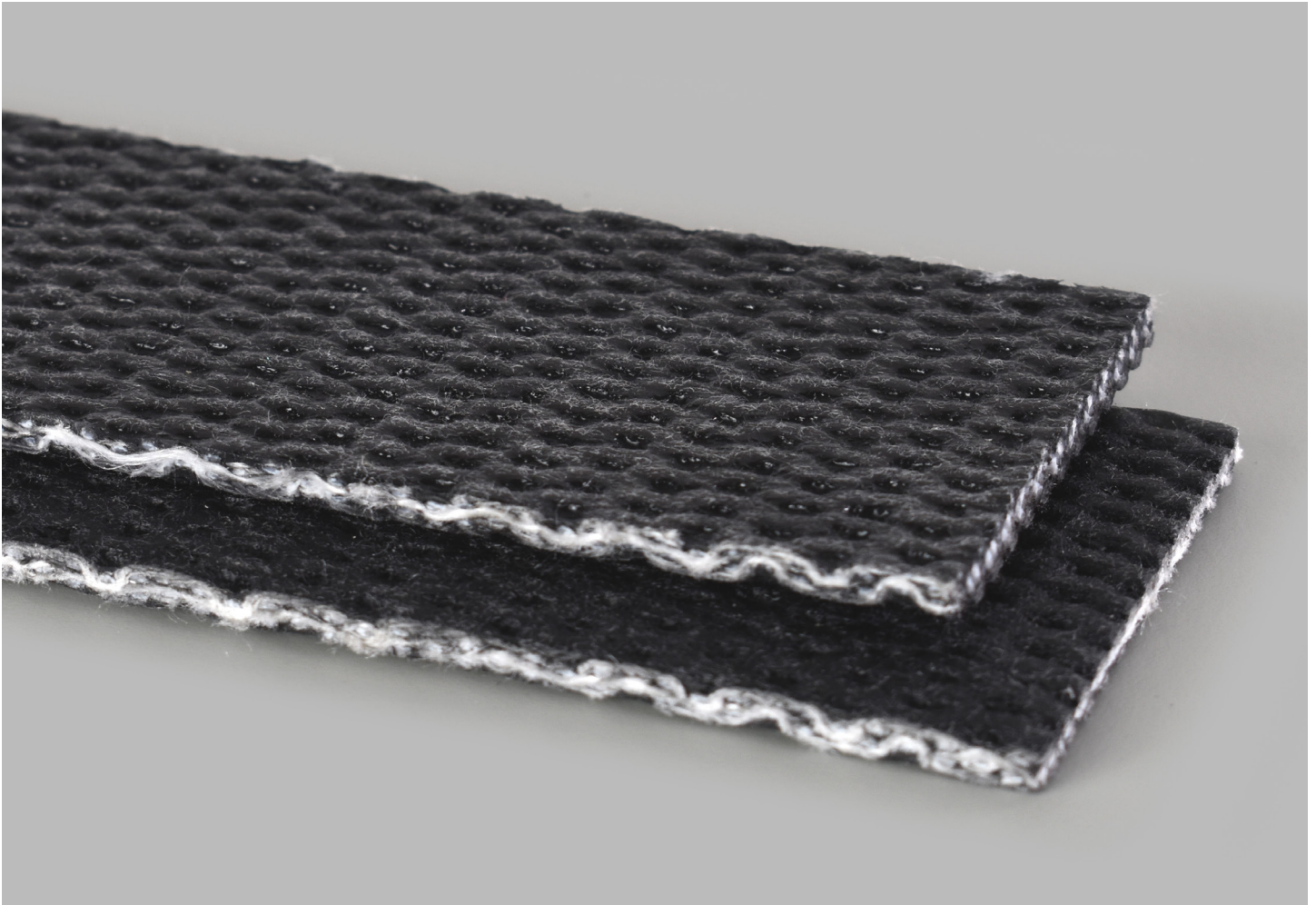
PHSW 200 BLACK PVC F X B FR

139HFS

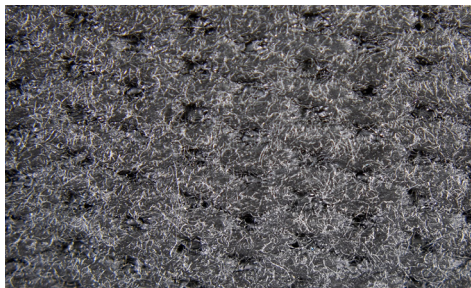
Catalog Number

50573

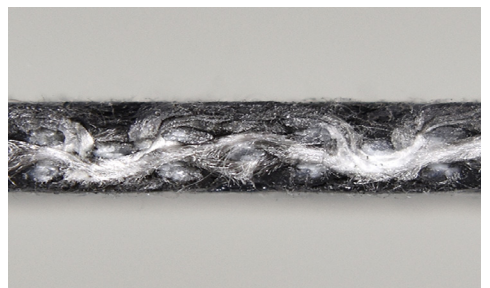
Part Number



Top Cover View



Bottom Cover View



Ply View



BELTSERVICE
CORPORATION

beltservice.com

REV 3/23