

**Catalog # 116A**
**Item number: 10764**
**Description:**

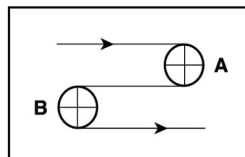
2 Ply Poly 86 Blue AS PVC ST x Bare

**International Designation:**

E15/2 0/V20AS Blue PVC x B

**Construction:**

Compound Top Cover	Blue PVC
Top Cover Thickness (in)	(2.00 mm) 0.0787 in
Top Cover Description	Sticky Top
Top Cover Shore	45
Compound Bottom Cover	Polyester
Bottom Cover Thickness (in)	(0.00 mm) 0.0000 in
Bottom Cover Description	Bare
Bottom Cover Shore	N/A
Number of Plies	2
Anti Static	Yes
Overall Gauge (in)	(4.00 mm) 0.1575 in
Unit Weight- lb/PIW	0.0816 lbs/PIW
Material Between Plies	PVC
Maximum Width (in)	79 in
Temperature Range (°F)- High	176 °F
Temperature Range (°F)- Low	23 °F

**Pulley Diameter, Minimum**


A) Normal Flex	(80.01 mm) 3.1500 in
B) Back Flex	(99.82 mm) 3.9300 in

**Belt Strength:**

Pull for 1% Elongation	(15 N/mm) 86 lbs/sq in
------------------------	------------------------

**Splice Instructions:**

Foil	Yes
Splice Process	Finger
Press Temperature (°F)	330 °F
Press Pressure (psi)	25 lbs/sq in

Note: Listed above is a guideline only. Every vulcanizer is different and will show different results. We recommend that you do a test splice with your press before attempting the actual belt splice.

**Other:**

Cross Rigid	Yes
Impression Top	No
Oil Resistant	No
Fire Resistant	No
FDA Approved	No

**Special Characteristics:**

The soft 45 durometer top cover makes this belt an excellent choice for steep inclines/declines. Used in applications such as package handling, small parts conveying and moving plastic containers up inclines. When using this type of belt, special care should be taken to keep dust to a minimum, clean with a denatured alcohol only. Excellent belt for compression applications requiring positive product contact.

\*\*\*\*\*All Values are nominal and subject to change without notice.\*\*\*\*\*

<b>St. Louis, MO</b> 800-727-2358 314-344-8500	<b>Boise, ID</b> 800-423-4469 208-342-4681	<b>Charlotte, NC</b> 800-849-2358 704-949-2100	<b>Grand Prairie, TX</b> 800-727-2358 314-344-8555	<b>Philadelphia, PA</b> 800-777-1314 215-295-1900	<b>Sacramento, CA</b> 800-289-2358 916-419-7191	<b>Vancouver, WA</b> 800-234-2358 360-567-4280	<b>Beltservice Canada</b> 877-210-7423 905-565-9217	<b>Beltservice de Mexico</b> +52 55 53620434 +44 2980 3266
--	--	--	--	---	---	--	---	--

## PVC/NBR PROFILE/STICKY TOP COVERS

2 PLY POLY 86 PIW BLUE AS PVC ST X B

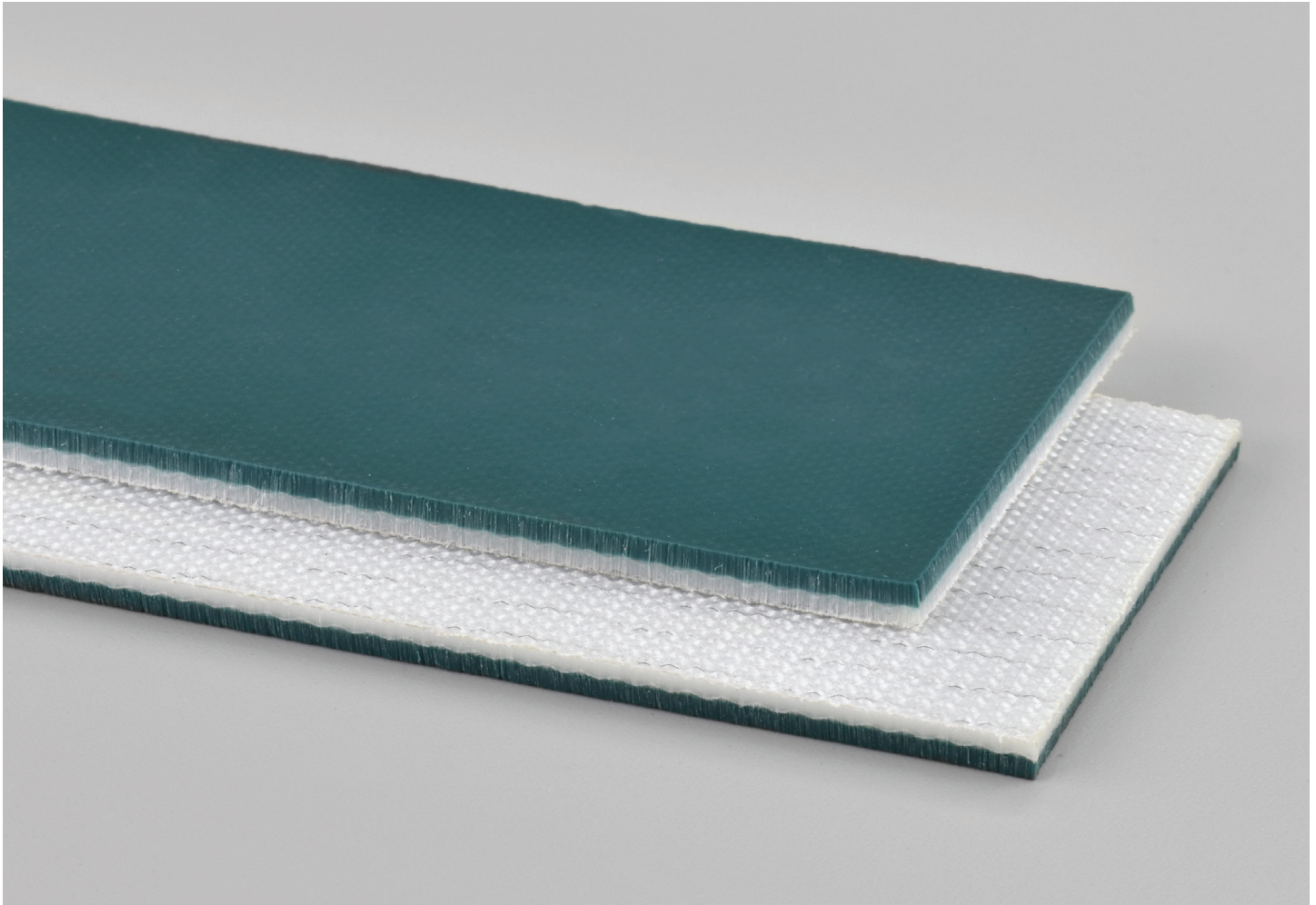
INTERNATIONAL DESIGNATION: E15/2 0/V20AS BLUE PVC X B

**116A**

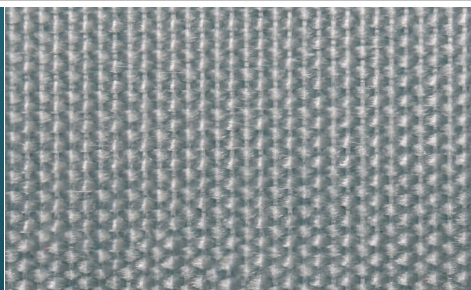
Catalog Number

**10764**

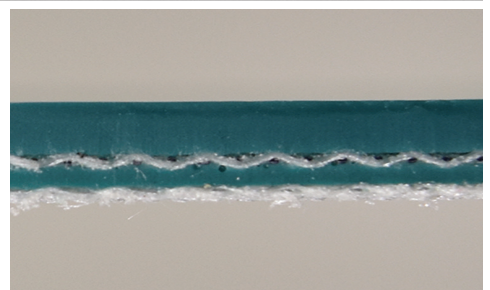
Part Number



Top Cover View



Bottom Cover View



Ply View



**BELTSERVICE**  
CORPORATION

[beltservice.com](http://beltservice.com)

REV 3/23